

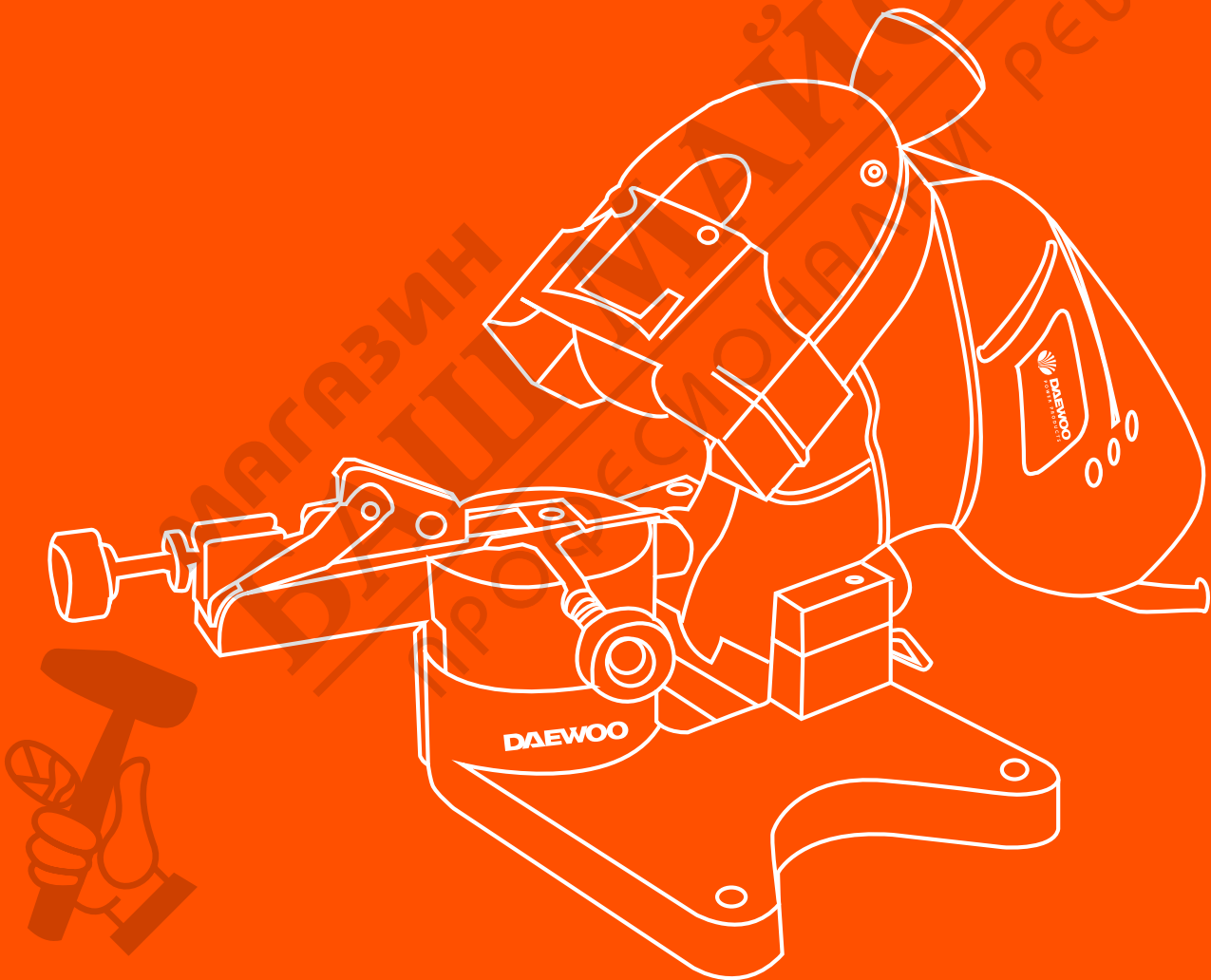


DAEWOO

POWER PRODUCTS

CHAINSAW SHARPENER

DWCSS130-220



USER'S MANUAL

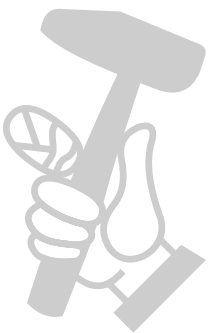
www.daewoopowerproducts.com

Manufactured under license of Daewoo International Corporation, Korea

INDEX

1. SPECIFICATIONS	2
2. SAFETY WARNINGS	2
3. PARTS LIST	3
4. ADDITIONAL SAFETY WARNINGS	4
5. ASSEMBLY	4
6. OPERATION	5
7. MAINTENANCE	8
WARRANTY	9

МАГАЗИН
БАШ МАЙСТОРА[®]
ПРОФЕСІОНАЛНИ РЕШЕННЯ



1. SPECIFICATIONS

POWER	130-220 W
NO LOAD SPEED	3000/7500 rpm
WORKING TABLE ADJUSTABLE ANGLE	+/- 30°
DISC SIZE	100 x 10 x 3.5 mm
INCLUDES	2 hex keys, 1 spanner, 1 wrench, 1 M8X80 mm hexc screws, 2 gaskets and 2 M8 nuts.

2. SAFETY WARNINGS

When using too, basic safety instructions should always be followed to reduce the risk of personal injury.

Read all instructions before using this tool:

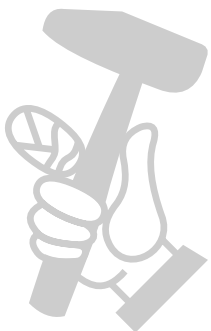
- 1- Keep work area clean. Cluttered areas invite injuries.
- 2- Observe work area conditions. Do not use machines or power tools in damp or wet locations. Don't expose to rain. Keep work area well lighted. Do not use electrically powered tools in the presence of flammable gases or liquids.
- 3- Keep children away of work area and tool.
- 4- Store tools in a dry location.
- 5- Use the right tools for the job. Do not force the tool. Use only for what this tool was designed for.
- 6- Use proper clothing to use this tool.
- 7- Use eye and ear protection.
- 8- Do not overreach.
- 9- Keep tools sharp and clean for better and safer performance. Follow instructions for lubricating and changing accessories.
- 10- Avoid unintentional starting.
- 11- Stay alert. Watch what you are doing. Use common sense.
- 12- Check for damaged parts.
- 13- Guard against electric shock.
- 14- Replacement parts and accessories.
- 15- Do not operate tool if under the influence of alcohol or drugs.
- 16- Use proper size and type extension cord.
- 17- Maintenance should be performed regularly by a qualified technician.

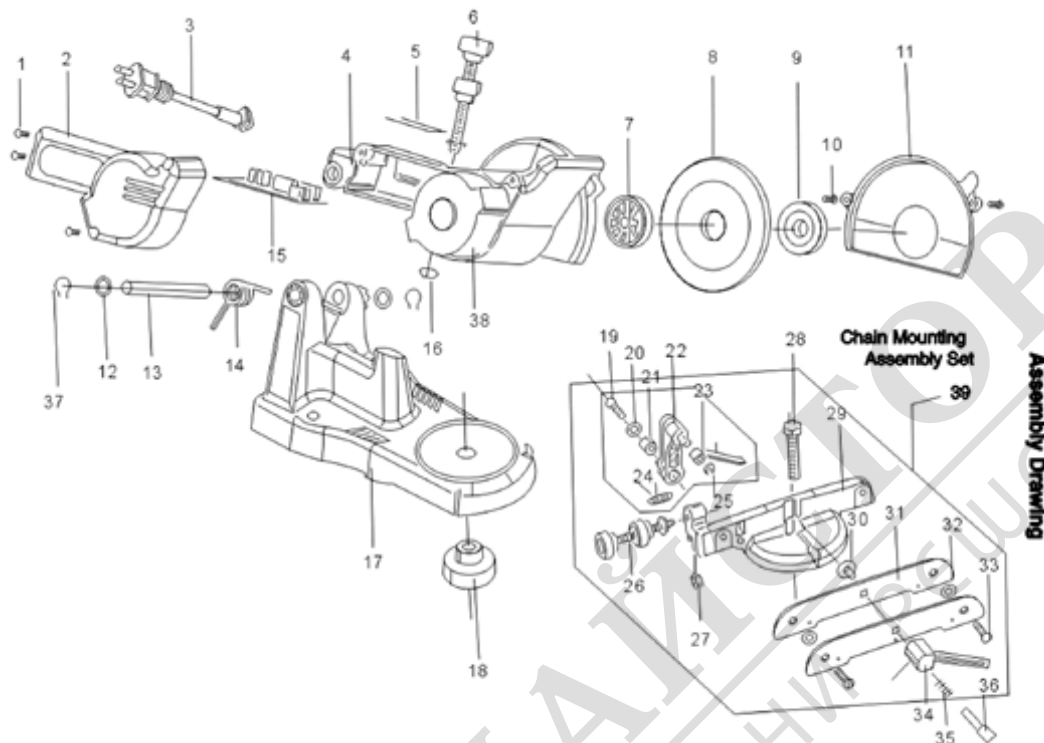
18- Never use around flammable materials.

3. PARTS LIST

Part N°	Description	QTY	Part N°	Description	QTY
1	Screw	3	21	Bearing	1
2	Motor cover	1	22	Swing arm	1
3	Power cord	1	23	Chain stop	1
4	Top housing	1	24	Tension spring	1
5	Switch plate	1	25	Retaining ring (5)	1
6	Lock stop	1	26	Lower knob	1
7	Grinding wheel base	1	27	Screw	1
8	Grinding wheel	1	28	Bolt	1
9	Grinder lock cap	1	29	Chainsaw frame	1
10	Screw	2	30	Square neck screw	1
11	Grinding wheel cover	1	31	Sliding guide	2
12	O-seal ring	2	31	Pad	2
13	Punching axis	1	33	Screw	2
14	Torsion spring	1	34	Handle	1
15	Switch circuit board	1	35	Spring	1
16	Nut	1	36	Lock screw	1
17	Base	1	37	Retaining ring (10)	2
18	Lock wheel	1	38	Motor	1
19	Screw	1	The chain mounting assembly (#39) is only available as a set. Parts from 19 to 36 are not available individually.		
20	Washer	1			

NOTE: Some parts are listed and shown for illustration purposes only and are not available individually as replacement parts.





4. ADDITIONAL SAFETY WARNINGS

Grinding wheel warnings

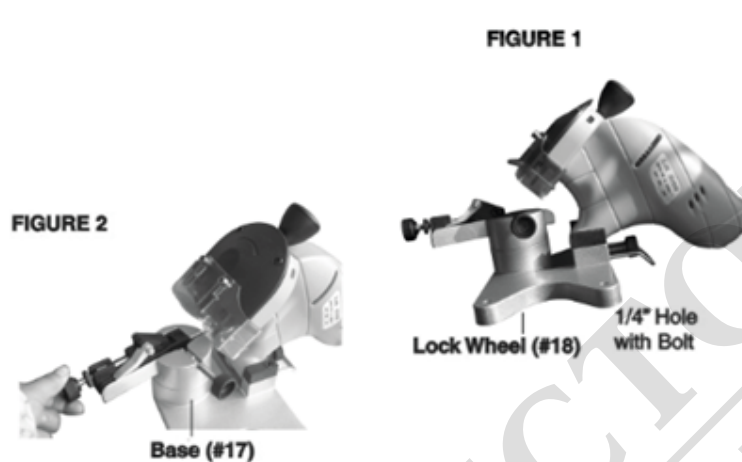
- 1- Do not use a grinding wheel if it is chipped, cracked or worn.
- 2- Only use grinding wheels that fit the arbor (7/8"). Do not try to change or modify the mounting hole on a grinding wheel to make it fit.
- 3- Do not over tighten the grinder lock cap. Hand tighten it only.
- 4- Never use the chainsaw sharpener without the grinding wheel cover in place.
- 5- Always test the grinding wheel by running it for a minute prior to contact with a chain.
- 6- Keep away from the wheel when it is turning, and make sure no one is standing close, in the line of the wheel rotation trajectory.
- 7- If the grinding wheel vibrates, turn off the machine immediately and check that it is mounted securely and that is not damaged.
- 8- Never try to stop the grinding wheel with your hands, even if you are wearing safety gloves.
- 9- Never operate tool without the grinding wheel cover in place.

Warning! This machine is designed to sharpen chainsaw chains. Do not attempt to sharpen any other tools, and do not attempt to grind any other objects.

5. ASSEMBLY

1. When installing the sharpener on a workbench, make sure that the lock wheel.

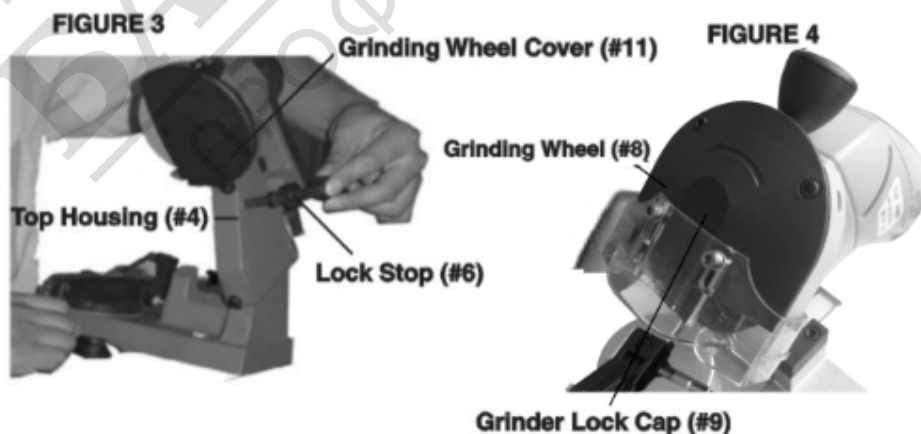
2. Bolt the unit directly to the workbench through the two 1/4" holes on the base. The workbench must have a solid surface capable of supporting the weight of these products, the workplace and assorted tools. See Figure 2.



Mounting a grinding wheel.

Refer to the assembly drawing on page 10 and Figure 3 and Figure 4 below.

1. Raise the Top Housing and lock it in the up position by tightening the lock stop.
2. Remove the two screws holding the grinding wheel cover. Set the cover aside.
3. Unscrew the grinder lock cap that holds the grinding wheel in place.
4. Install the new wheel on the grinding wheel base, making sure it fits properly.
5. Replace the grinder lock cap.
6. Replace the grinding wheel cover.
7. Release the lock stop and lower the top housing.
8. Never operate tool without the grinding wheel cover in place.

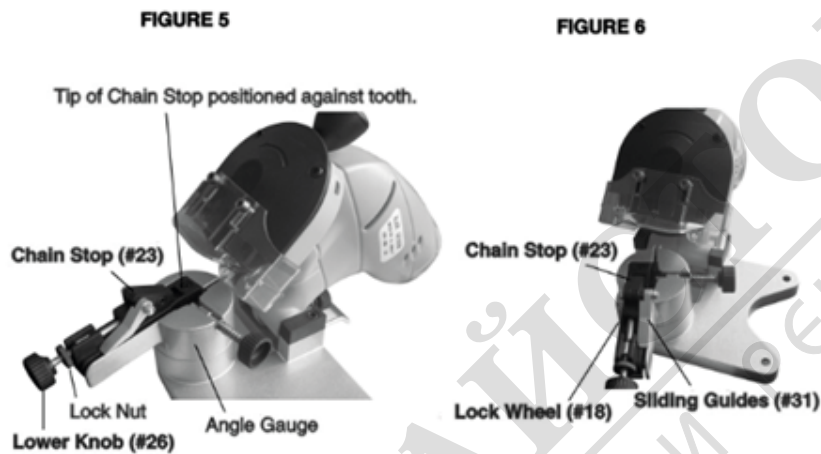


6. OPERATION

Warning! Always unplug the unit while adjusting chain to be sharpened. Refer to the assembly drawing on page 10 and the various photographs.

Note: raise the top housing while adjusting the chain.

1. Clean the chain before sharpening. Wash it with a non-flammable solvent. Do not use gasoline. Dry the chain.
2. Lift up the chain stop and secure the chain in the sliding guides. See Figure 6.
3. Lower the chain stop so that it is positioned on the tooth (cutter) you want to start with. See Figure 5.



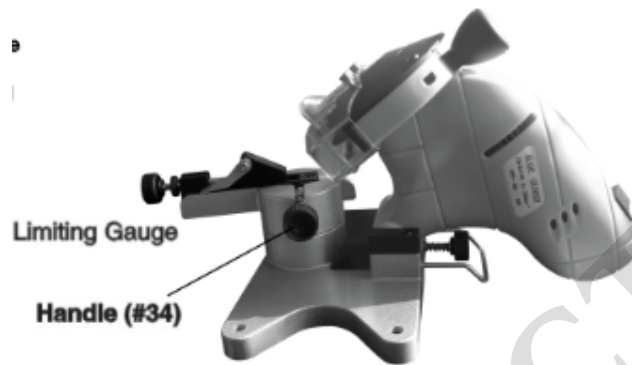
4. See Figures 5 and 6. Loosen the lock wheel to allow entire housing to turn. Rotate the housing to match the degree of angle you need on the angle gauge. Chains come in various sizes with varying degrees of sharpening angles.
5. Lower the top housing so that the grinding wheel skims the chain tooth.
6. Hold it at that position while you tighten the lock stop so that the wheel will only go down to that point. See Figure 7.
7. Depending on the amount of material you wish to remove, tighten or loosen the lower knob and set the lock nut. See Figure 5. The lower knob has a lock nut which will determine how much material is removed. Once you set the lock nut, fully tighten the lower knob.

FIGURE 7



8. Lock the chain in the sliding guides by tuning the handle. See Figure 8. The handle should be situated so that you can easily release and tighten it. You will need to release it each time you move the next link, and tighten it to sharpen each link.

Operation (continued) FIGURE 8



9. If the chain has been repeatedly sharpened, the chain depth limiting gauges may need to be taken down with a flat file (not included). See Figures 8 and 9. File down each gauge so that they are at a lower level than the cutting teeth.

FIGURE 9



Sharpening

1. Put on your protective gear and make sure the immediate area is clear.
2. Plug in the power cord and push the green button on the switch plate to turn on the machine.
3. Slowly lower the grinding wheel as shown in Figure 10. If you notice slight errors in your settings, turn off the unit and unplug it before you make your adjustments

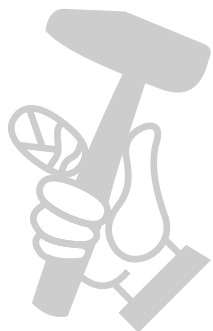
FIGURE 10



1. After sharpening one tooth, turn off the machine. Lift the top housing, release the handle and move the chain so that the next link is positioned in the chain stop. Tighten the handle. Turn the machine back on and continue sharpening the next tooth. Repeat the process.
2. After you finished sharpening, turn off the machine by pushing the red button on the switch plate and unplug the unit.
3. Loosen the lock wheel and reset the angle so that the first tooth that hasn't been sharpened is positioned against the chain stop and locked in as explained on page 6.
4. As you did with the first half of the chain, be sure to lower the top housing so that the grinding wheel skims the chain tooth, and lock it in place. See page 6. Follow all of the steps on page 6 double checking everything before you plug in the machine and turn it on again.
5. After you repeat all of the steps under Sharpening on page 7, your chain is ready to be mounted on your saw.

7. MAINTENANCE

1. Keep the sharpener clean and free of dust.
2. Check the grinding wheel before each use to make sure it is not damaged.
3. Replace the grinding wheel when it grinds down to a diameter of 3 inches.





DAEWOO
POWER PRODUCTS



МАГАЗИН МАЙСТОРА®
БАШ ПРОФЕССИОНАЛЬНЫЕ РЕШЕНИЯ

www.daewoopowerproducts.com

Manufactured under license of Daewoo International Corporation, Korea