

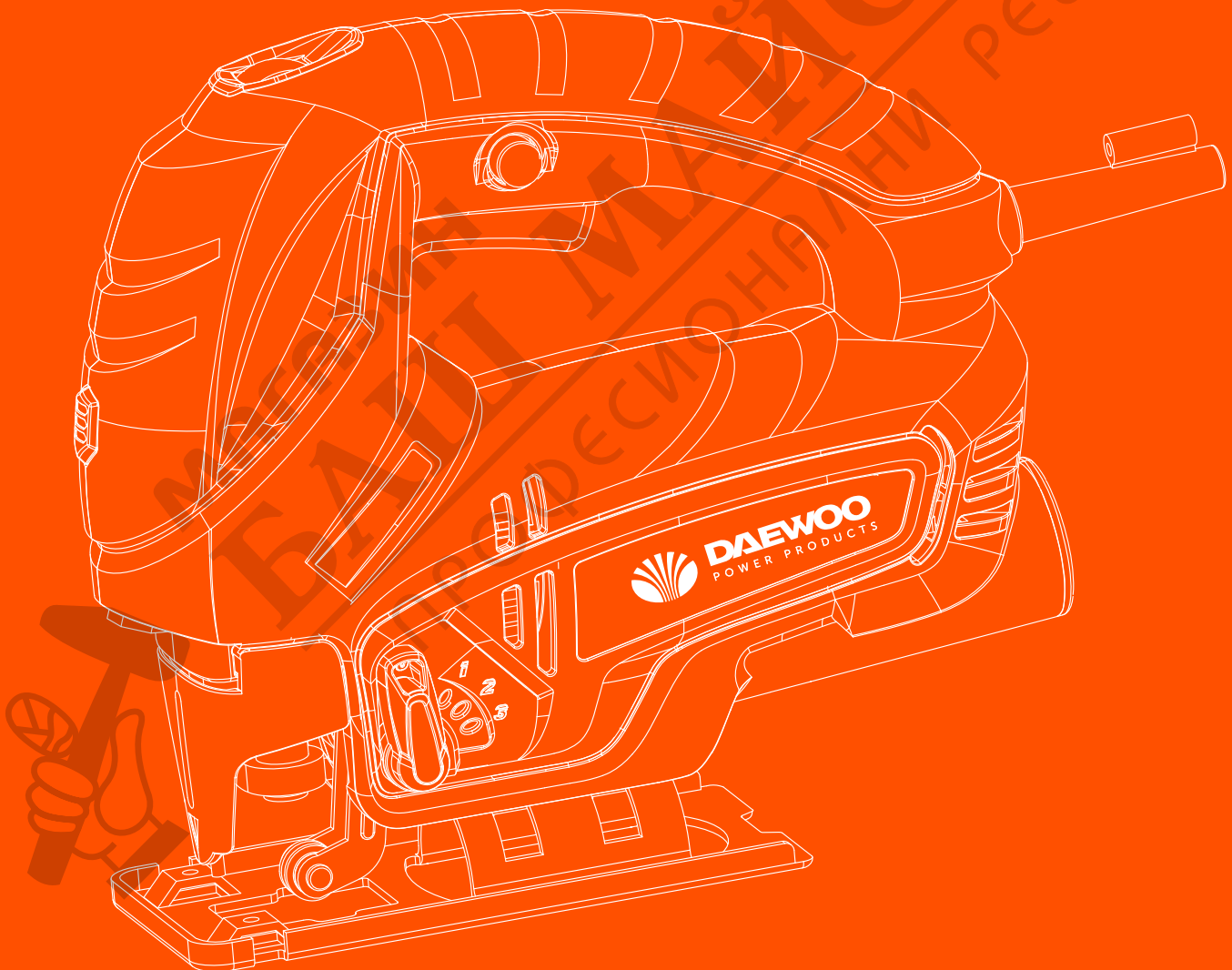


DAEWOO

POWER PRODUCTS

DAJS 800

Sierra caladora / Jig saw



MANUAL DE USO

www.daewoopowerproducts.com

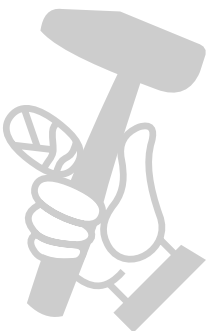
Fabricado bajo licencia de Daewoo International Corporation, Korea

ÍNDICE

1. DATOS TÉCNICOS	2
2. INSTRUCCIONES DE OPERACIÓN	2
3. MANTENIMIENTO	4
4. SEGURIDAD	4
5. DESPIECE	5
GARANTÍA	7

INDEX

1. APPLICATION AREA	8
2. TECHNICAL DATA	8
3. DELIVERY PACKAGE	8
4. OPERATING INSTRUCTION	9
5. SAFETY INSTRUCTION WHEN WORKING WITH JIGSAW	11
6. SAFETY INSTRUCTION	12
7. EXPLODED VIEW	13
8. WARRANTY	14



DEAR CUSTOMER!

Require the test work of the machine as well as checking the whole set of accessories supplied when buying. Make sure that the warranty coupon is properly filled in and contains the date of purchasing, stamp and signature of the seller. Read carefully this manual and observe all the rules described before the first operating of the machine.

Keep this manual during the term of the using of the product.

1.APPLICATION AREA

Jigsaw can be used for cutting arbitrary curves, such as stenciled designs or other custom shapes, into a piece of wood or similar material.

Jigsaw is equipped with speed adjustment unit and pendulum function.

The laser guide of the model JS-80C/JS-80D gives enhanced cutting performance owing to convenient orientation while working. The machine is not for the professional use.

The use of the tool not for purposes described in the manual is strictly prohibited.



Attention! Strong pollution of inner parts of the tool by products of processing is infringement of conditions of operation of the machine and the grounds for refusal of the manufacturer warranty repair.



Double insulation prevents the injury by electric current.

In connection with ongoing efforts to enhance the machine's functionality manufacturer reserves the right for the minor alterations which are not reflected in the present guide which will not affect the efficient and safe operation of the machine.

2.TECHNICAL DATA

Item No.	DAJS800	
Input power	800 W	
Electric current voltage	110-240V	
Frequency	50-60Hz	
Max depth of cut:	wood	80 mm
	metal	10 mm
No load speed	500-3000 rpm	
Safety class	□ / II	
Weight (approx.)		
Sound pressure level	LpA: 87 dB (A)	
	KpA=3 dB	
Sound power level	LwA: 98 dB (A)	
	KwA=3 dB	
Vibration emission value	$a_{h,B} = 6,02 \text{ m/s}^2$	
	$K_B = 1,5 \text{ m/s}^2$	
	$a_{h,M} = 6,38 \text{ m/s}^2$	
	$K_M = 1,5 \text{ m/s}^2$	

3. DELIVERY PACKAGE

Jigsaw JS-65A / JS-65B	1 pc
User manual	1 pc
Sawing blade (for wood)	3 pcs
Allen key	1 pc
Color box	1 pc
Extra set of carbon brushes	1 pc

1. ON/OFF switch;
2. Lock-on button;
3. Variable speed control wheel;
4. Pendulum knob;
5. Laser guide ON/OFF switch;
6. Blade holder;
7. Safety guard;
8. Shoe plate;
9. Dust extraction outlet.

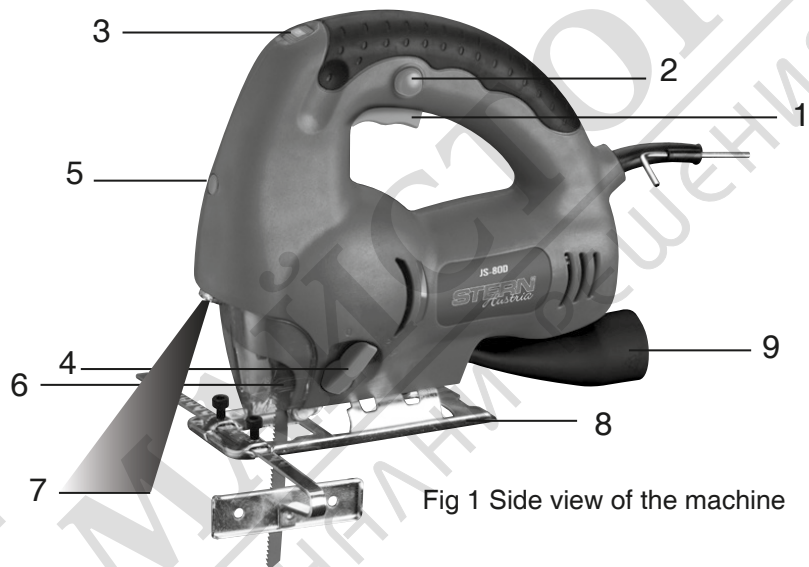


Fig 1 Side view of the machine

4. OPERATING INSTRUCTION

BEFORE WORK



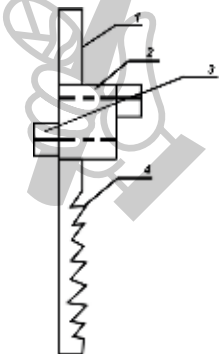
Check network voltage: it should conform to the data on the machine's label. Tool labeled with the 230 V, can be also connected to a power source with a voltage of 220 volts.

FITTING THE SAW BLADE

Disconnect the tool from the power supply.



Push the saw blade (4) shank as far as possible into the saw blade holder (2). Tighten both screws (3) with the allen key. To release, turn both screws anticlockwise.



SWITCHING ON/OFF

The saw is started by pressing the on/off switch. The switch can be maintained in the operating position by using the lock-on button. Pressing and releasing the on/off switch once more can release the lock-on button.

PENDULUM STROKE ADJUSTMENT

Together with the electronic speed regulation, the pendulum stroke adjustment

helps to set the best combination of blade speed and aggressiveness needed to achieve a desired cut rate and fineness. The pendulum knob is used to make the adjustment. The best pendulum stroke setting for the particular work to be carried out can be obtained from the following table. When using a knife blade, the pendulum setting should be 0. It is recommended the use of appropriate lubrication for cutting metal.

Position	Cutting	Material
0	Reciprocating	Steel, plastic Fine cut of wood and plywood
I	Pendulum movement (small)	Steel, aluminum, hard wood, plastic
II	Pendulum movement (average)	Wood, plywood, plastic, quick cut of steel and aluminum
III	Pendulum movement (big)	Quick cut of wood and plywood

ELECTRONIC SPEED REGULATION

The electronic speed control wheel is used to adjust the saw speed. In this way, the speed can be adapted to the material being worked. Turn forward to increase and back to decrease speed. The larger the number, the quicker is the speed.

Always hold the machine firmly closed to the surface to be processed. Start cutting only when the motor attains full speed.

CUTTING

Cut at an even rate and take care not to overload the saw, excessive force on the saw will prevent the pendulum action operating correctly and reduce the cutting efficiency. When cutting tight curves, reduce or switch off the pendulum motion.

ANGLE CUTTING

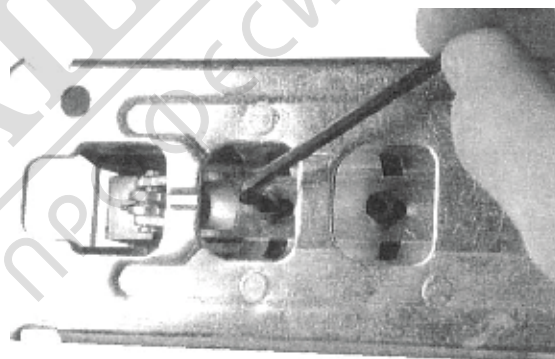


Fig. 2



Attention!

Always be sure that the tool is switched off and unplugged before adjusting the machine, installing or removing accessories.

Raise the safety guard and loosen the allen screw on the shoe plate with the allen key. Pull the shoe plate backward and set the desired angular adjustment according to the scale or push the shoe plate forward for fixed Locks at 0°, 15°, 30° or 45°. Tighten the allen screws again. Always replace the allen key in the allen key holder on the shoe plate immediately after use.

Trimming edges

To trim edges or make dimensional adjustments, run the blade lightly along the cut edges.

Metal cutting

Always use a suitable coolant (cutting oil) when cutting metal. Failure to do so will cause significant blade wear. The underside of the work-piece can be greased instead of using a coolant.

- Use only special blades for metal.

Laser function

The laser function is to check the line and orientation. Press the laser function, make sure it is in the ON position.

Adjust the machine accordingly and start your cutting operating.

During the operation

- during long work don't allow overloading and overheating of the motor, make work breaks;
- avoid mechanical damage of the machine;
- keep the machine away of intense heat sources and reactive materials, don't allow liquids and other matters come inside the machine;
- don't not block ventilation slots in the housing;
- switch off the machine by the way of turning off the switch before disconnecting the cable.

After work

- switch off the machine and disconnect the cable from the current source;
- clean the machine and accessories;
- keep the machine in conditions of temperature from +1°C to +35°C and humidity not more than 80%.

Maintenance

For safe and reliable operation please remember that repairing, maintenance and adjustment of the machine of Stark brand is to be made in the special service centers of Stark company with applying only original spare parts.

5.SAFETY INSTRUCTION WHEN WORKING WITH JIGSAW

1. Avoid cutting nails. Inspect workpiece for any nails and remove them before operation.
2. Do not cut hollow pipe.
3. Do not cut oversize workpiece.
4. Check for the proper clearance beyond the workpiece before cutting so that the blade will not strike the floor, workbench, etc.
5. Hold the tool firmly.
6. Make sure the blade is not contacting the workpiece before the switch is turned on.
7. Keep hands away from moving parts.
8. Do not leave the tool running. Operate the tool only when hand-held.
9. Always switch off and wait for the blade to come to a complete stop before removing the blade

from the workpiece.

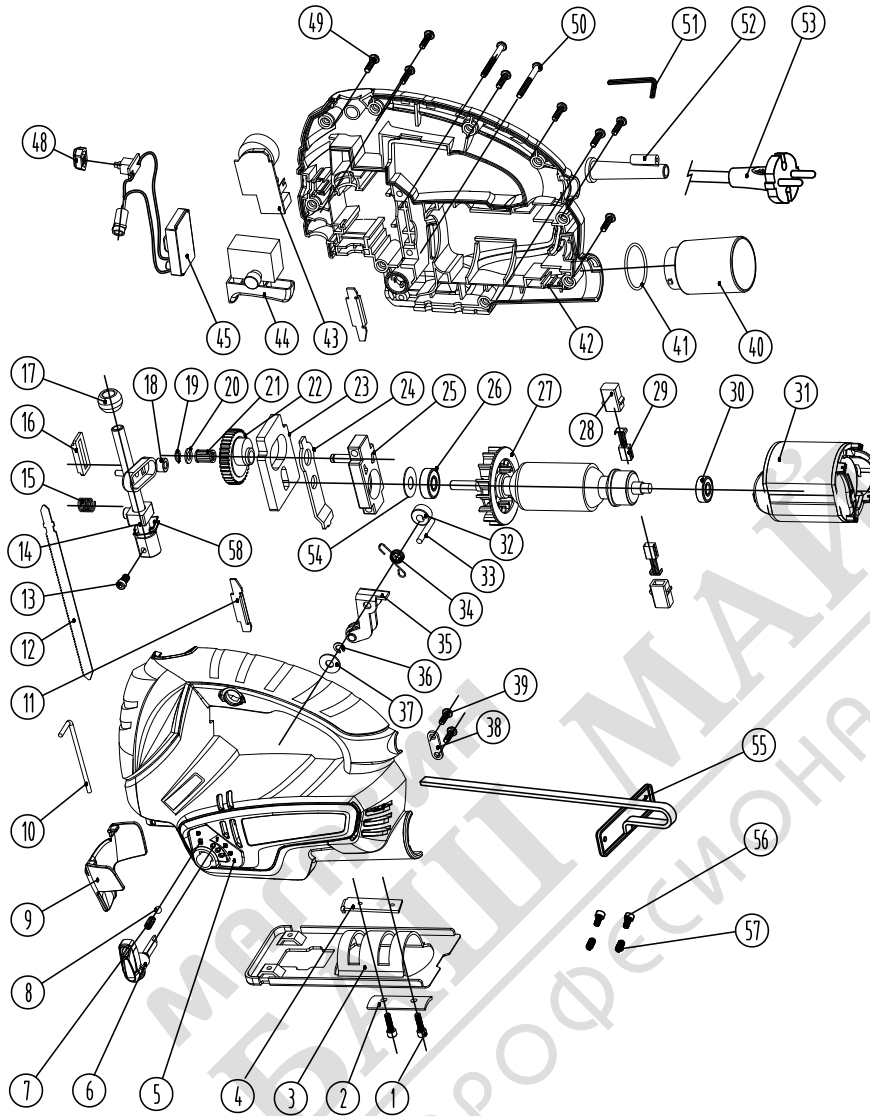
10. Do not touch the blade or the workpiece immediately after operation; they may be extremely hot and could burn your skin.
11. Hold tool by insulated gripping surfaces when performing an operation where the cutting tools may contact hidden wiring or its own cord. Contact with a “live” wire will make exposed metal parts of the tool “live” and shock the operator.

6.SAFETY INSTRUCTION

Attention! Observe the safety rules when using the machine to avoid burning, electrical shock or other injuring.

1. Make sure that the voltage of the power supply network as well as operation conditions conforms to those described in this manual. Be especially prudent when working in the zone of electric circuit wiring.
2. Keep your working place in order – the mess brings about injuring.
3. Don't use the machine in places of increased humidity. Don't work in raining conditions. Keep the poisoning or pungent liquids and gases away of your working space.
4. Don't touch grounded objects as water pipes, heaters etc. when working with the machine.
5. Don't allow children and unauthorized person in your working zone.
6. Don't overload the machine. It reduces the life of machine and can lead to injures as well.
7. Use the machine only for its intended purpose.
8. Don't leave the machine working without care.
9. Choose the proper clothes. Hide long hairs under the cap. Use rubber gloves and protective shoes when working outside.
10. Always use protective goggles while working. Use special protective mask if the dust is generated abundantly.
11. Always carefully handle the electrical cable. Never carry the machine holding it for the cable. Never pull out the cable from the power socket holding it. These actions may bring about the electrical shock.
12. If the cable is damaged during work it is necessary to pull out the plug from power socket not touching the cable. It is strictly prohibited to operate the machine with damaged electrical cable.
13. Make sure that the machine is switched off when inserting the plug into power socket.
14. Be careful while working. Avoid working if you are tired.
15. Every time before switching on check all the working and protective parts. If any damaged parts are discovered the repair works should be rendered in qualified service center.

7. EXPLODED VIEW



Item No	Name
1	Screw
2	Connect board
3	Base
4	Fixing plate
5	Left housing
6	Knob for Pendulum
7	Spring
8	Steel Ball
9	Protector cover

10	Stell wire
11	Liner
12	Blade
13	Screw
14	Reciprocating bar
15	Base Spring
16	Guide board
17	Reciprocating bar bracket
18	Reciprocating bar roller
19	Circlap for shaft
20	Washer
21	Needle bearing
22	Big gear
23	Balance block
24	Pendulum board
25	Center support
26	Deep groove ball bearing
27	Rotor
28	Carbon brush box
29	Carbon brush
30	Deep groove ball bearing
31	Stator
32	Blade holder side base
33	Needle
34	Torsional spring
35	Blade holder
36	Washer
37	Washer
38	Cable presser
39	Screw
40	Dust outlet
41	O rubber ring
42	Right housing
43	Variable speed controller
44	Switch
45	Laser power board
48	Laser botton
49	Washer
50	Screw
51	Allen wrench
52	Cable sleeve
53	Cable
54	Washer
55	Guide ruler
56	Screw
57	Guide ruller spring
58	Felted wool



DAEWOO
POWER PRODUCTS



МАГАЗИНЫ МАЙСТОРА®
БАШ ПРОФЕССИОНАЛЬНЫЕ РЕШЕНИЯ

www.daewoopowerproducts.com

Manufactured under license of Daewoo International Corporation, Korea