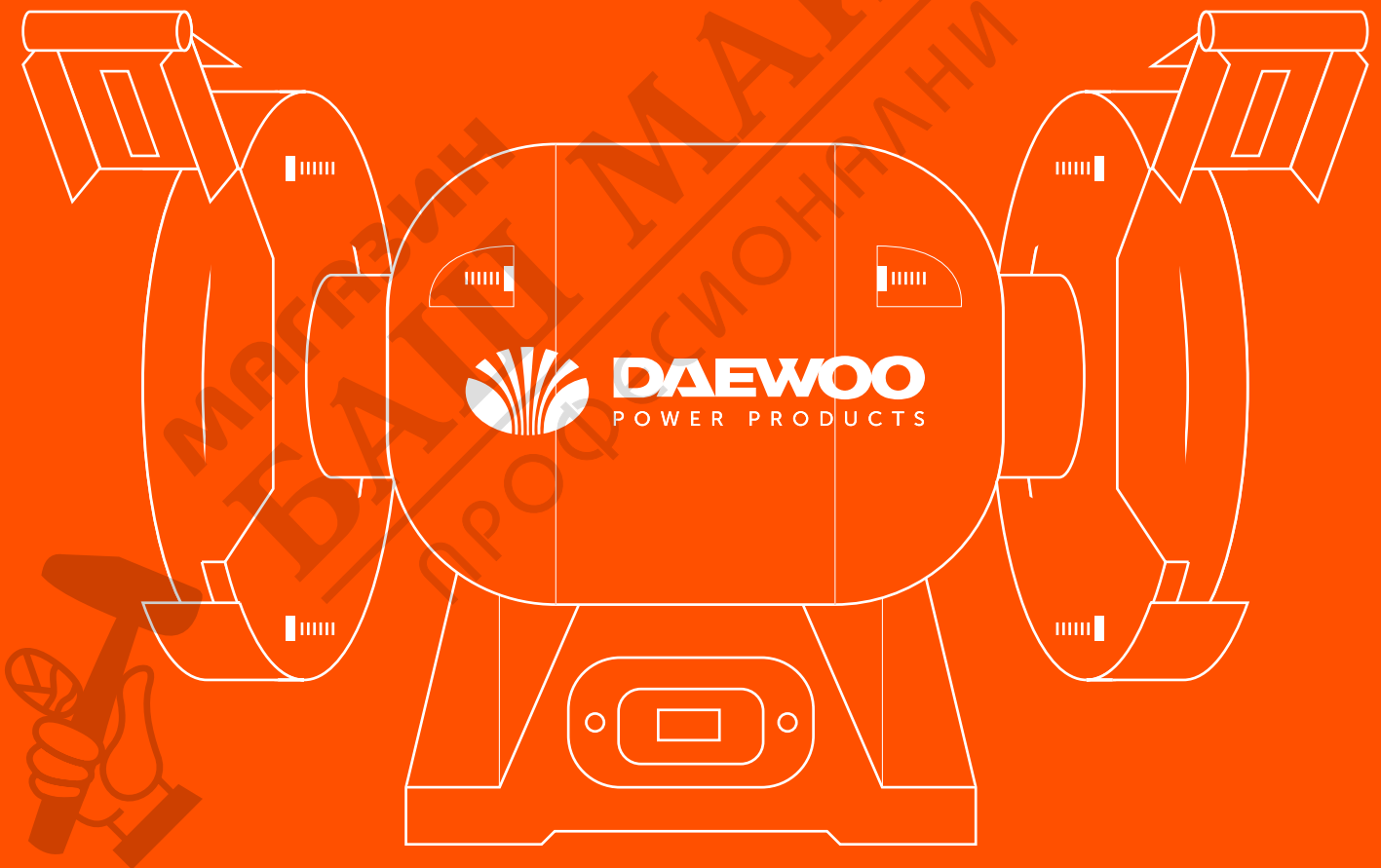




DAEWOO
POWER PRODUCTS

DABG 200

Bench grinder / Amoladora de banco



USER'S MANUAL/MANUAL DE USO

www.daewoopowerproducts.com

Manufactured under license of Daewoo International Corporation, Korea

INDEX

1. COMPONENT LIST	2
2. GENERAL SAFETY INSTRUCTIONS	3
3. SPECIFIC SAFETY RULES	5
4. WARNING SYMBOLS	6
5. TOOL SPECIFICATIONS	7
6. OPERATING INSTRUCTIONS	7
7. WORKING HINTS FOR YOUR POWER TOOL	9
8. SERVICE, MAINTENANCE, CLEANING AND WARRANTY	10
WARRANTY	11

ÍNDICE

1. LISTA DE COMPONENTES	13
2. INSTRUCCIONES GENERALES DE SEGURIDAD	13
3. REGLAS ESPECÍFICAS DE SEGURIDAD	15
4. SEGURIDAD ELÉCTRICA	15
5. PROTECCIÓN DEL MEDIO AMBIENTE	16
6. SÍMBOLOS DE PRECAUCIÓN	16
7. ESPECIFICACIONES DE LA HERRAMIENTA	16
8. INSTRUCCIONES DE OPERACIÓN	16
9. CONSEJOS DE TRABAJO PARA SU HERRAMIENTA ELÉCTRICA	20
10. SERVICIO, MANTENIMIENTO Y LIMPIEZA	21
GARANTÍA	22

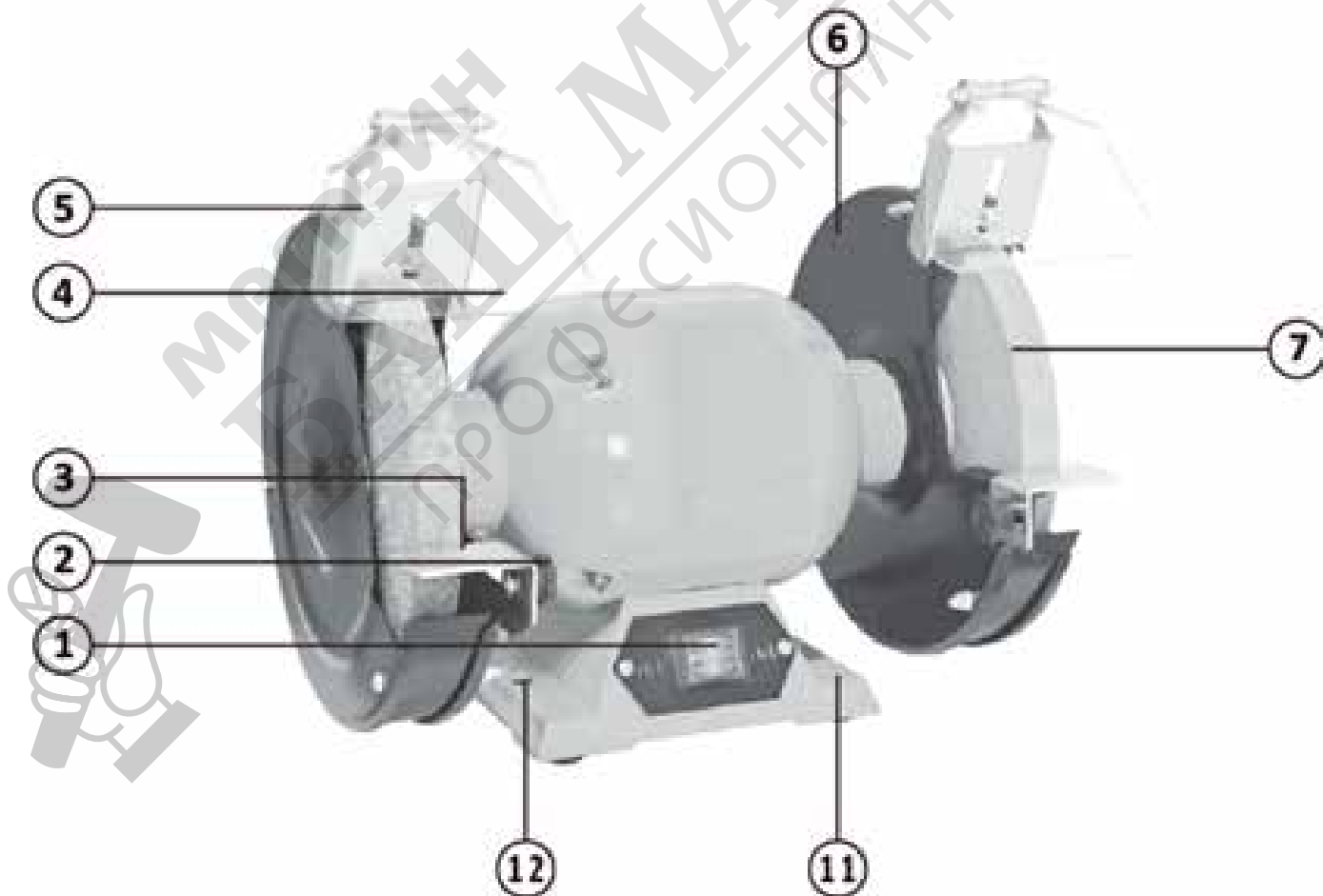
Thank you for purchasing our product. We are confident that you will appreciate the quality of the product and you will be entirely satisfied with your purchase. Please read carefully the user safety and operating instruction on how to operate this product correctly within safety norms and regulations.

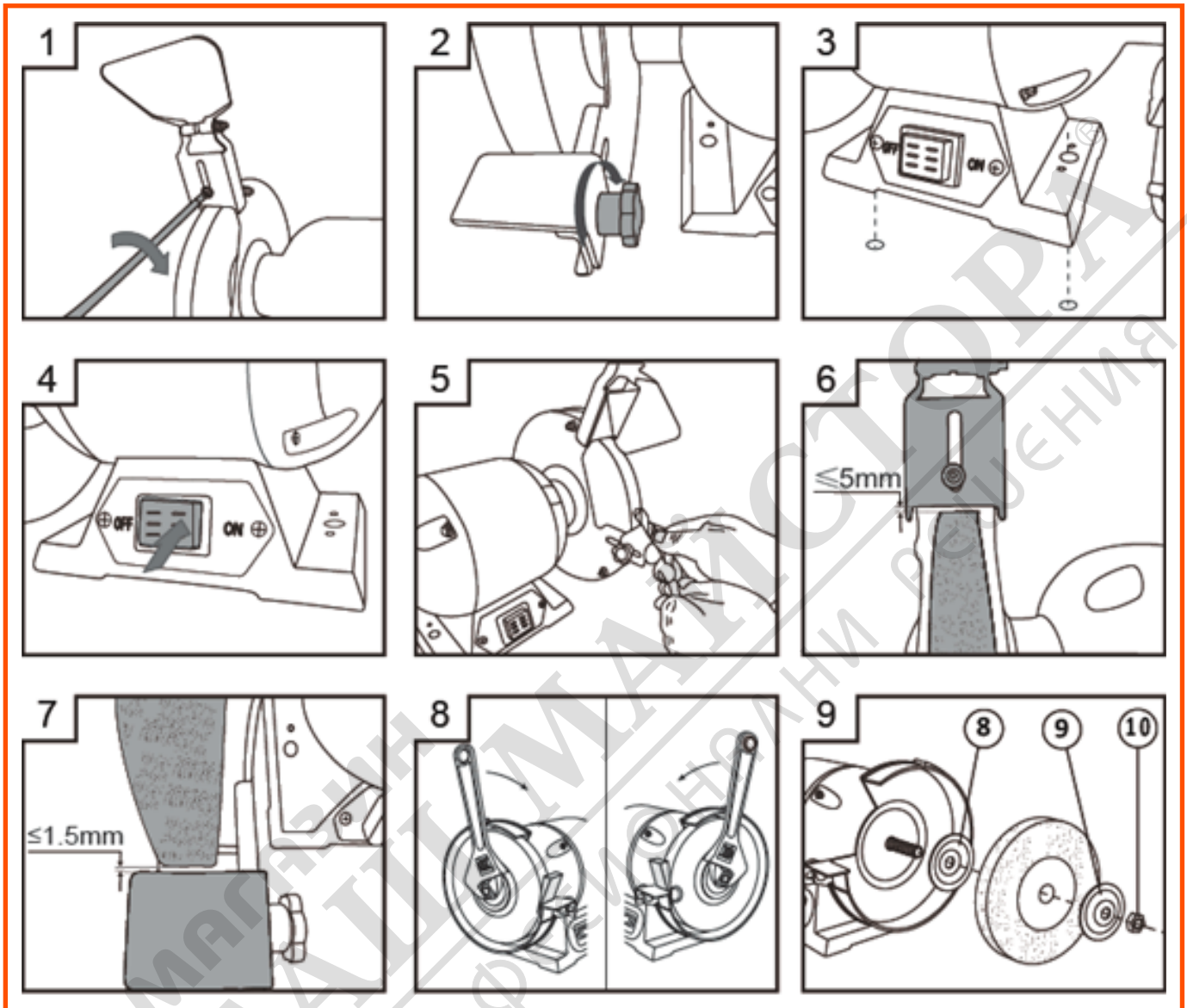
1. COMPONENT LIST

- 1) On/off switch
- 2) Tool rest locking knob
- 3) Tool rest
- 4) Eye shield
- 5) Spark deflector
- 6) Wheel guard
- 7) Grinding wheel
- 8) Grinding wheel flange
- 9) Outer grinding wheel flange
- 10) Grinding wheel locking nut
- 11) Base
- 12) Mounting holes

NORMAL ACCESSORIES

- 1) Eye shields: 2set
- 2) Tool rests: 2set





We recommend that you purchase your accessories from the same store that sold you the tool. Use good quality accessories marked with a well-known brand name. Choose the type according to the work you intend to undertake. Refer to the accessory packaging for further details. Store personnel can assist you and offer advice.

2. GENERAL SAFETY INSTRUCTIONS

WARNING!

When using electrical tools basic safety precautions should always be followed to reduce the risk of fire, electric shock and personal injury including the following.

Read all these instructions before attempting to operate this product and save these instructions.

1. Keep work area clean

Cluttered areas and benches invite injuries.

2. Consider work area environment

- Do not expose power tools to rain.
- Do not use power tools in damp or wet locations.
- Keep work area well lit.
- Do not use power tools near flammable liquids or gases.

3. Guard against electric shock

- Avoid body contact with earthed or ground surfaces (e.g. pipes, radiators, ranges, refrigerators)

4. Keep children away

- Do not let persons, especially children, not involved in the work touch the tool or extension cord and keep them away from work area.

5. Store idle tools

- When not in use, tools should be stored in a dry, high or locked-up place, out of the reach of children.

6. Do not force tool

- It will do the job better and safer at the rate for which it was intended.

7. Use right tool

- Do not force small tools to do the job of a heavy duty tool.
- Do not use tools for purposes not intended; for example do not use a circular saw for cutting tree limbs or logs.

8. Dress properly

- Do not wear loose clothing or jewelry. They can be caught in moving parts.
- Non-skid footwear is recommended when working outdoors.
- Wear protection hair covering to contain long hair.

9. Use protective equipment

- Use safety glasses
- Use face or dust mask if working operations create dust.

10. Connect dust extraction equipment

- If the tool is provide for the connection of dust extraction and collecting equipment, ensure these are connected and properly used.

11. Do not abuse cord

- Never carry tool by cord or yank it to disconnect it from wall outlet. Keep cord from heat, oil and sharp edges.

12. Secure work

- When possible use clamps or a vice to hold the work. It is safer than using your hand.

13. Do not overreach

- Keep proper footing and balance at all times.

14. Maintain tools with care

- Keep cutting tools sharp and clean for better and safer performance.
- Follow instruction for lubricating and changing accessories.
- Inspect tool cords periodically and if damaged have them repaired by an authorized service facility.
- Inspect extension cord periodically and replace if damaged.
- Keep handles dry, clean and free from oil and grease.

15. Disconnect tools

- When not in use, before servicing and when changing accessories such as blades, bits and cutters, disconnect tools from the power supply.

16. Remove adjusting keys and wrenches

- Form the habit of checking to see that keys and adjusting wrenches are removed from the tool before turning it on.

17. Avoid unintentional starting

Ensure switch is in “off” position when plugging in.

18. Use outdoor extension leads

When the tool is used outdoors, use only extension cords intended for outdoor use and so marked.

19. Stay alert

Watch what you are doing. Use common sense and do not operate tool when you are tired.

20. Check damaged parts

Before further use of tool, it should be carefully checked to determine that it will operate properly and perform its intended function.

Check for alignment of moving parts, binding of moving parts, breakage of parts, mounting and any other conditions that may affect its operation.

A guard or other part that is damaged should be properly repaired or replaced by an authorized service center unless otherwise indicated in the instruction manual.

Have defective switches replaced by an authorized service centre.

Do not use tool if switch does not turn it on and off.

21. Warning

The use of any accessory or attachment other than one recommended in this instruction manual may present a risk of personal injury.

22. Have your tool replaced by a qualified person

This electric tool complies with the relevant safety rules. Repairs should only be carried out by qualified person using originals spare parts, otherwise this may result in considerable danger to the user.

3. SPECIFIC SAFETY RULES

- Do not to use damaged or misshapen wheels or brushes
- Only use accessories (ie. Grinding wheels, wire brush etc.) that have a speed rating which is higher than the idle speed on the grinder, use only grinding wheels recommended by the manufacturer which have a marked speed equal to or greater than the speed marked on the nameplate of the tool.
- Adjust the spark arrestor frequently so as to compensate for wear of the wheel, keep the distance between the spark arrestor and the wheel as small as possible and in any case not greater than 2 mm.
- For the safe use, handling and storage of abrasive wheels and brushes in a dry place, out of the reach of children.
- Replacing the grinder wheel if the grinding wheel has been worn down such that a distance of 2 mm to the work piece support and to the spark arrestor can no longer be set, then the grinding wheel must be replaced.
- When the machine is in operation, keep hands away form the grinding area
- The wheel will not stop immediately the machine is turned off. Exercise caution
- Do not start the tool when the grinding or cutting wheels are touching the work area.
- Always ensure he safety guards is attached correcting and do not operate the bench grinder without the guards attached.
- Only use grinding wheels with the correct bore size for the spindle of the grinder.
- Keep the power cord well away from the grinding area during use. Always position the cord so that it will not be caught in the workpiece when the grinder is in use.
- Always wear earmuffs, safety glasses and face mask while in operation.
- Before connecting the tool to the power supply, follow the safety instructions to install the grinding wheel.

- Use the standard parts. Do not use a coolant or water on the grinding wheels.
- If an extension lead is required use a three core cable with an earthed extension plug and extension socket.
- Fasten the support securely. The clearance between the support and the grinding wheel should never be more than 1.5mm
- Do not install or use a cracked grinding wheel.
- Do not operate without the safety guard, supports and safety shields correctly fitted.
- The grinding wheel and wheel guard comes factory fitted. Before operations ensure that the grinding wheels and guards are secure.
- Keep water clear off the electrical parts of the tool and away from persons in the working area.
- Regular inspect the bench grinder and grinding wheels, ensure that the grinder and wheels are free of cracks and surface defects.
- Frequently clean grinding dust from bench grinder. If dust or some chips or workpiece fragment causes the blockages, stop using the tool and it need to be cleaned at once. For personal safety, during the maintenance and cleaning work, make sure the switch is in "off" position and the plug has been removed from the power supply and make sure that grinding wheel has come to a complete stop, then clean you bench grinder like removing the clips or blocks, dedusting by an external vacuum cleaner.

Electric safety



The electric motor has been developed for a particular mains voltage. Always check whether your mains voltage is the same as the value printed on the type plate. Connect the appliance only to a mains socket with an earth connection.

Environmental protection



This product has been marked with a symbol relating to removing electric and electronic waste. This means that this product shall not be discarded with household waste but that it shall be returned to a collection system which conforms to the European WEEE Directive. Contact your local authorities or stockist for advice on recycling. It will then be recycled or dismantled in order to reduce the impact on the environment. Electric and electronic equipment can be hazardous for the environment and for human health since they contain hazardous substances.

4. WARNING SYMBOLS



WARNING - To reduce the risk of injury, user must read instruction manual



WARNING - Always Wear ear protection



WARNING - Always wear eye protection

5. TOOL SPECIFICATIONS

Rated input power	200 W
Rated voltage	110-240 V ~ 50-60 Hz
Operation time	S2 30min
No load speed	2950 rpm (50 Hz) 3450 rpm (60Hz)
Grinding disc diameter	200 mm
Recommended grinding wheel Dimension	200 x 20 x 32
Protection class	I

6. OPERATING INSTRUCTIONS

Note: Before using the power tool, read the instruction manual carefully.

1. Intended use

The machine is intended for sharpening tools such as drill bits and chisels or grinding small metal parts.

It is not suitable for grinding heavy sheet metal parts. It is not suitable for grinding soft substance such as wood, plastic, lead, magnesium and light alloys.

2. Before using your power tool

- 1) The power tool must be mounted on a level and stable surface (e. g., workbench) prior to using.
- 2) Check the grinding wheels. The grinding wheels must be properly mounted and must rotate freely.

Carry out a one minute test run with no load.

- 3) Do not use cracked or damaged grinding wheels.

3. Fitting and adjusting the eye shields and spark deflectors

Warning: Prior to fitting the eye shields and spark deflectors, ensure the grinder is turned off and the power plug is removed from the socket.

Note: Always check to ensure the eye shields and spark deflectors are correctly fitted and they are correctly adjusted each time the grinder is used. Eye shields and spark deflectors must be fitted over each grinding wheel.

- 1) Position the eye shield and spark deflector to the top of the wheel guard.
- 2) Reinserting the bolt through the spark deflector and wheel guard, followed by the washer, spring washer, and nut.
- 3) Slide the spark deflector up or down so that the bottom edge is less than 5mm from the surface of the wheel, but not touching the wheel.
- 4) Tighten to secure the spark deflector onto the wheel guard.
- 5) Rotate the wheel one full revolution by hand to ensure the wheel can rotate without contacting the spark deflector bracket. Firmly tighten the bolt retaining the bracket (See Fig 1).
- 6) Repeat the assembly operation for the second eye shield and spark deflector.

4. Fitting and adjusting the tool rests

Warning:

- Prior to fitting the tool rests, ensure the grinder is turned off and the power plug is removed from the socket.
- To reduce the risk of injury, never use a grinder on which the tool rest has not been fitted or where the tool rest has not been correctly adjusted.

- 1) Hold the tool rest in the correct position against the inner surface of the wheel guard.
- 2) Insert bolt through wheel guard and tool rest, followed by a washer, spring washer, and locking

knob.

- 3) Tighten the locking knob sufficiently to support the tool rest but still allowing the tool rest to slide inwards and outwards.
- 4) Slide the tool rest to within a maximum of 1.5mm from the wheel. Rotate the wheel one full revolution by hand to ensure the wheel does not contact the tool rest. Firmly tighten the locking knob firmly to retain the assembly (See Fig 2).
- 5) Repeat the assembly operation for the second tool rest.

5. Mounting grinder to workbench

- 1) The grinders are supplied with 4 rubber mounts which assist in reducing the transmission of vibration.

If grinder is to be used in a permanent location, it is strongly recommended that the grinder fastened securely to a firm supporting surface such as a stand or workbench using mounting holes.

- 2) When mounting grinder to a workbench, holes should be drilled through the supporting surface of the workbench.
- 3) Place bench grinder on workbench aligning holes in base with holes drilled in workbench. Insert bolts and tighten (See Fig 3).

Note: Where the grinder is to be mounted to a steel work bench, it is advisable to place a piece of timber between the bench and grinder then bolt through the grinder and timber into the bench. This further assists to reduce vibration.

6. Using the On/Off switch

- 1) To turn the grinder on, press the upside or right hand side of the On/Off switch to the position marked "I" (See Fig 4)
- 2) To turn the grinder off, press the underside or left hand side of the On/Off switch to the position marked "O".

7. Operating your grinder

Warning: Prior to using the grinder, check that the eye shields, spark deflectors, and tool rests are fitted and correctly adjusted and that you are wearing safety gear including eye, hearing and breathing protection.

- 1) Turn the wheel by hand to make sure it does not touch the guard, eye shields, spark deflectors or tool rests and runs freely.
- 2) Stand to one side, turn the switch on and allow the motor to reach full speed.
- 3) Support the workpiece on the tool rest and gradually feed the workpiece onto the wheel (See Fig 5). Use pliers to hold small workpieces.
- 4) If the grinding operation causes the motor speed to noticeably decrease, pull back the workpiece, allow the motor to regain full speed and restart the grinding operation, but apply less force.

Warning: To reduce the risk of injury, only use the front face of the grinding wheel, not the sides.

Note: that the workpiece can get very warm. It may be necessary to cool a workpiece by dipping it in a coolant or in water. Do not apply coolant or water to the grinding wheel.

8. How to true and dress the wheels

Dressing a wheel cleans and levels the front surface to increase efficiency of operation and prevent vibration.

- 1) Dressing a wheel involves the use of a wheel dresser which is not supplied with the grinder. Follow the manufacturers instructions of the wheel dresser.
- 2) Adjust the tool rest to allow the front part of the wheel dresser to fit between the tool rest and wheel.
- 3) Start the motor and move the dresser across the front of the wheel a sufficient number of times until the surface is level. It is not necessary to apply excessive force in an attempt to dress the wheel in one pass of the wheel dresser.
- 4) Adjust the tool rest so that it is no more than 1.5mm from the wheel (See Fig 6).
- 5) Adjust the spark deflector to ensure the gap between the deflector and wheel is no more than

5mm (See Fig 7).

9. Grinder adjustments

During the life of the grinder some adjustments are required to maintain a safe working environment. Please ensure the following:

- 1) Always adjust the eye shields to the most comfortable and most effective angle to suit the task being performed.
- 2) As the wheels wear, the spark deflector must be adjusted to ensure the gap between the spark deflector and wheel does not exceed 5mm.
- 3) As the wheels wear the tool rests must also be adjusted so there is never a gap of greater than 1.5mm between the wheel and the edge of the tool rest.

10. Changing a grinding wheel

Warning: Prior to changing a wheel, ensure the grinder is turned off and the power plug is removed from the socket. Make sure that the replacement wheel is rated at 3000/min or higher.

- 1) Loosen and remove the retaining bolts and take off the spark deflector
- 2) Loosen and remove the retaining bolts and take off the wheel guard
- 3) To prevent wheel rotation, place a wood wedge between the grinding wheel and the tool rest.
- 4) Remove the locking nut (See Fig 8), outer flange and the wheel.

Note: The wheel on the left-hand side of the bench grinder has a left-hand thread and is unscrewed in a clockwise direction. The wheel on the right-hand side of the bench grinder has a right-hand thread and is unscrewed in an anti-clockwise direction.

- 5) Fit the replacement wheel and outer flange on the shaft ensuring that there is a blotter between the wheel and the flanges on each side of the wheel. Ensure the wheel is a slide fit (not loose) on the spindle (See Fig 9).
- 6) Replace the grinding wheel nut and tighten. (See the note above regarding the direction of rotation of the nut). Do not over tighten.
- 7) Replace the wheel guard.
- 8) Reinsert the 3 bolts, washers, spring washers, nuts, and tighten wheel guard in place.
- 9) Replace the retaining screw, spark deflector and tool rest.
- 10) Re-adjust the spark deflector, eye shield and tool rest.
- 11) Rotate the wheel by hand to check for free movement and proper adjustments.
- 12) Plug in the bench grinder, put on eye protection, stand to one side and run the grinder at full speed for several minutes

7. WORKING HINTS FOR YOUR POWER TOOL

1. Remember that grinding often produces sparks. Do not allow anyone to stand in the path of the sparks. Do not grind near flammable materials.
2. If the grinding operation causes the motor speed to noticeably decrease, pull back the workpiece, allow the motor to regain full speed and restart the grinding operation, but apply less force.
3. Wear the proper protective clothing. Particles flying off of a grinding wheel will be traveling very fast prepare for this. Wear safety glasses/face shield, a dust mask, earplugs, a leather apron, and heavy leather boots
4. Grasp the workpiece firmly and properly support it on the tool rest during grinding. Maintain even pressure and control of the workpiece when grinding.
5. Do not grind on the side of the wheel. The wheels are not designed for side grinding.

Protecting the environment made easy

Packaging



Our packaging and shipping braces are manufactured from environmentally-friendly, recyclable materials. Please dispose of all packaging components in an environmentally-friendly manner.

Disposing of the device



Devices that are marked with the adjacent symbol may not be disposed of in the household garbage. You are required to dispose of old electronic and electrical appliances separately. Please inform yourself in your community regarding the possibilities for controlled disposal. By means of disposing of such appliances separately, you make the old appliances available for recycling or another form of reuse. As a result, you help prevent substances that are, under certain circumstances, toxic from ending up in the environment.

8. SERVICE, MAINTENANCE, CLEANING AND WARRANTY

Hazardous grid voltage!

Risk of an electric shock!

Before cleaning and other maintenance operation, always disconnect the mains plug from the socket first. Make sure the switch is in “off” position and the plug has been removed from the power supply and make sure that grinding wheel has come to a complete stop.

If the supply cord is damaged, it must be replaced by the manufacturer or its service agent in order to avoid a hazard.

Disconnect from the power supply immediately if the supply cord is damaged.

Take care not to expose this tool to the rain.

Cleaning

Frequently clean grinding dust from bench grinder

– Remove dust and dirt with a damp cloth lightly wetted with rinsing water. However, be sure that no water penetrates the device. Avoid using solvents when cleaning plastic parts. Most plastic parts are susceptible to damage from various types of commercial solvents and may be damaged by their use.

– Remove chips and dust regularly using a vacuum cleaner or a brush.

Lubrication

All the bearings in this tool are lubricated with a sufficient amount of high grade lubricant for the life of the unit under normal operating conditions; therefore no further lubrication is required.



Gracias por comprar nuestro producto. Estamos seguros que apreciará la calidad del producto y estará satisfecho con su compra. Por favor lea atentamente las instrucciones de seguridad y funcionamiento del usuario sobre cómo operar este producto correctamente de acuerdo con las normas y reglamentos de seguridad.

