



# DAEWOO

POWER PRODUCTS

## DALGT18-1

Lithium Grass Trimmer



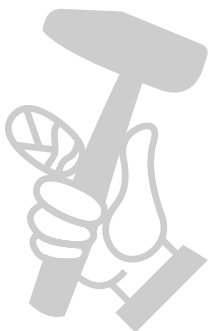
## USER'S MANUAL

[www.daewoopowerproducts.com](http://www.daewoopowerproducts.com)

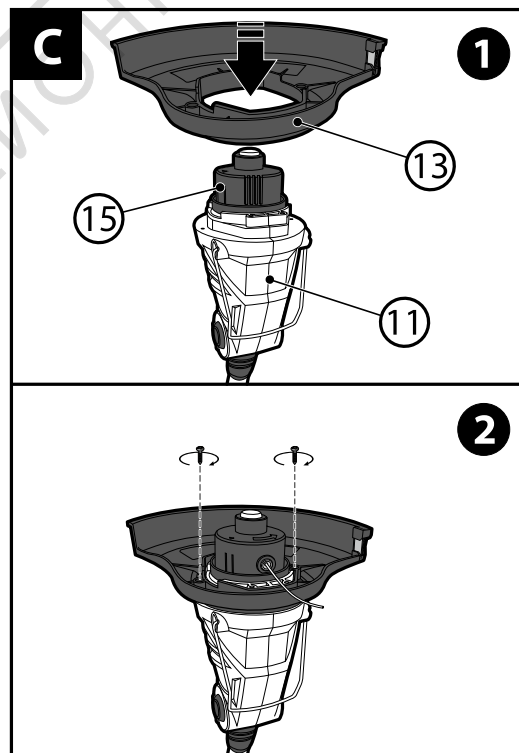
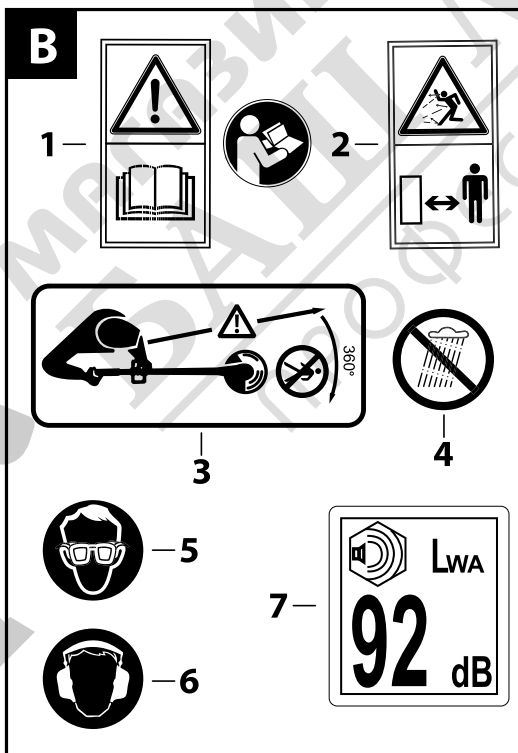
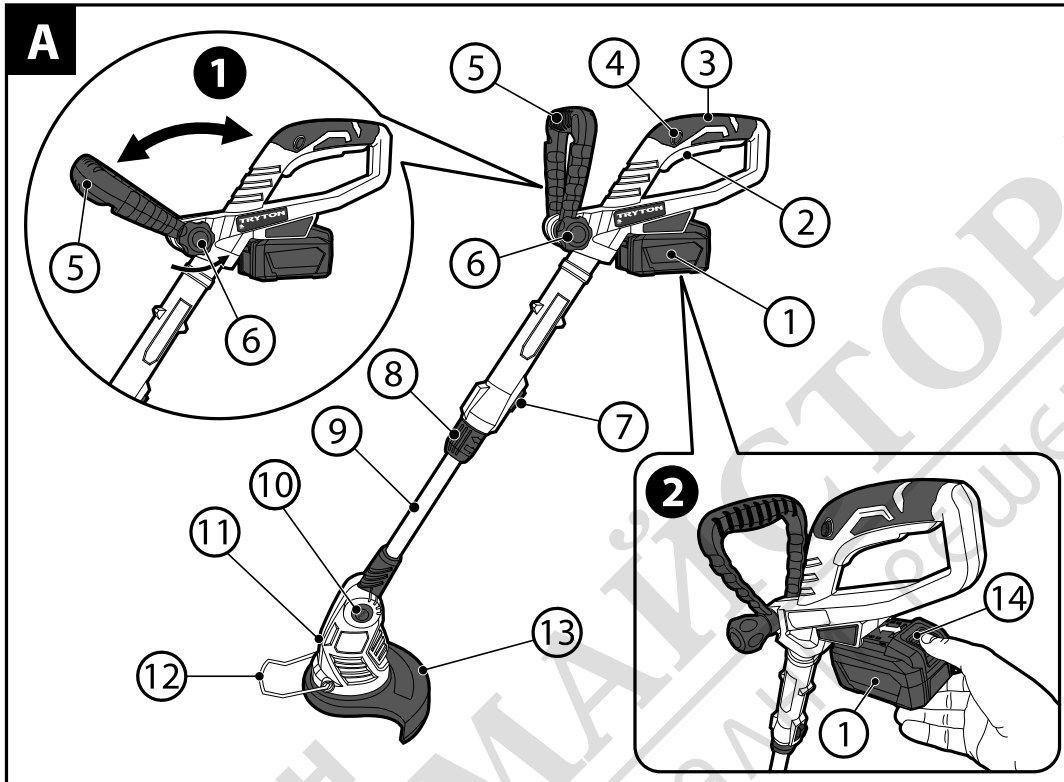
Manufactured under license of Daewoo International Corporation, Korea

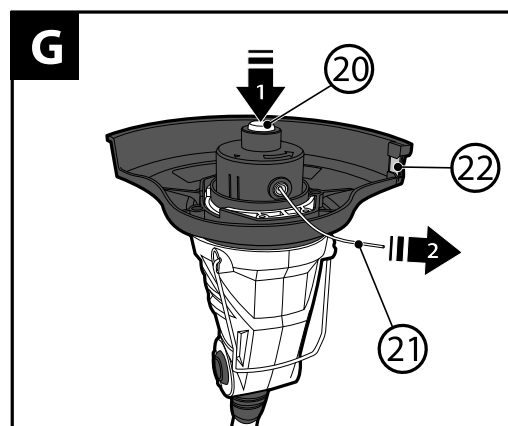
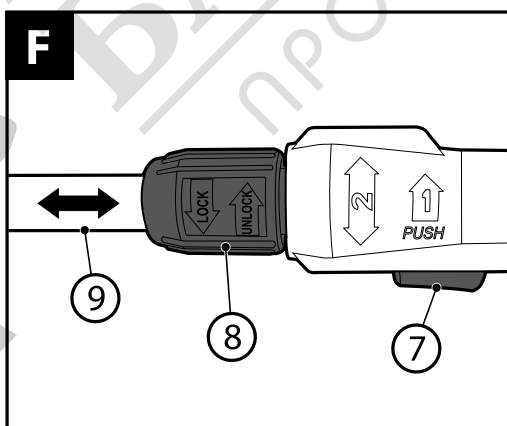
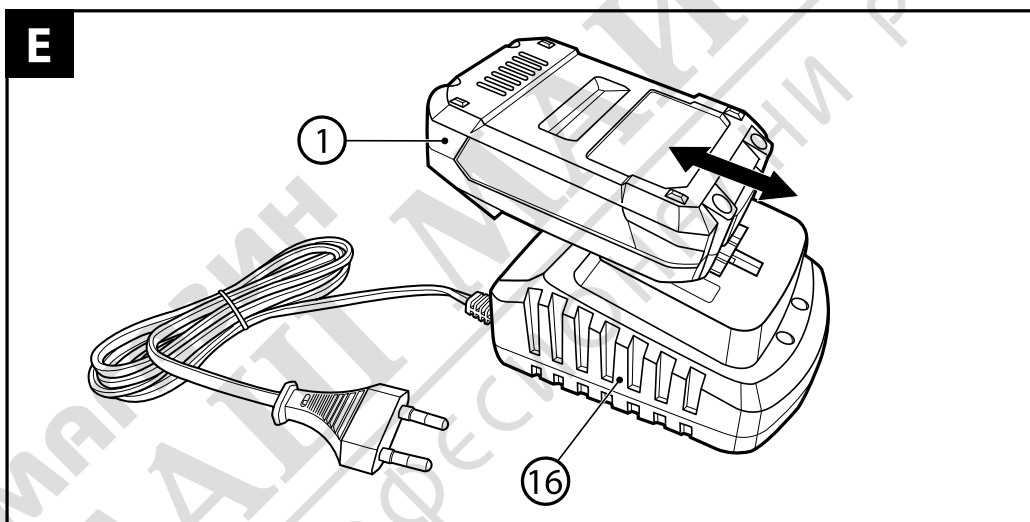
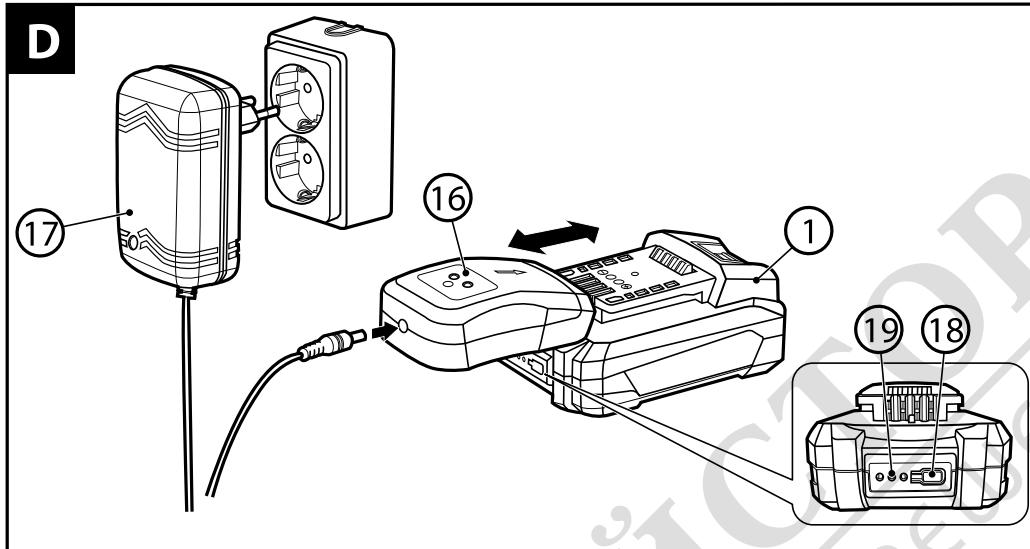
## INDEX

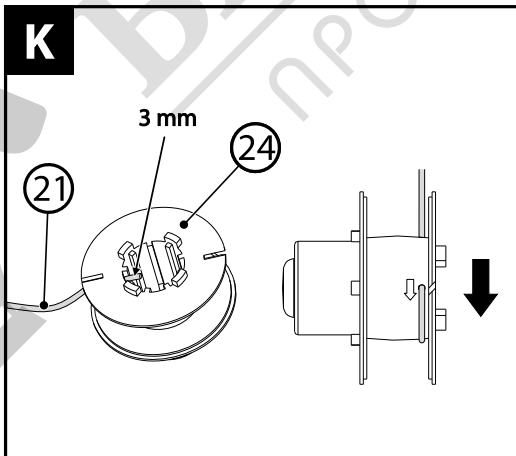
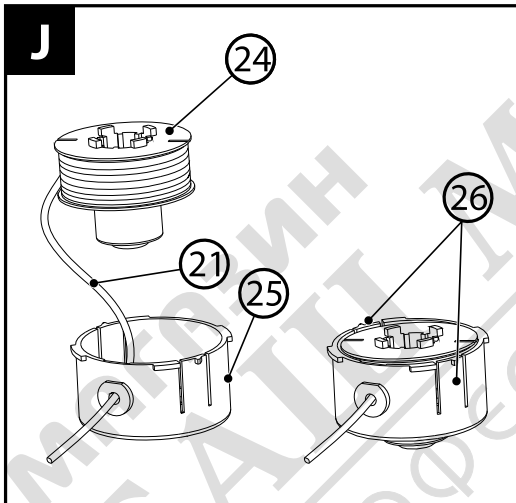
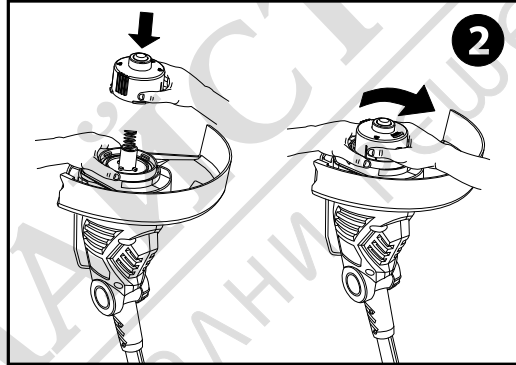
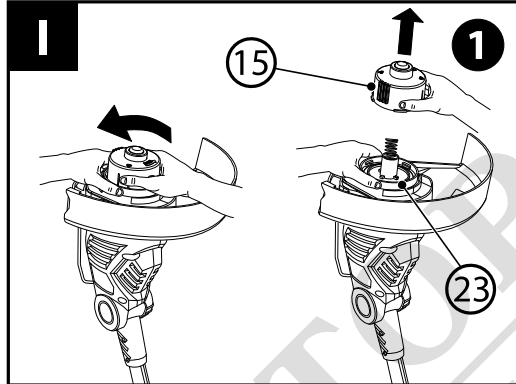
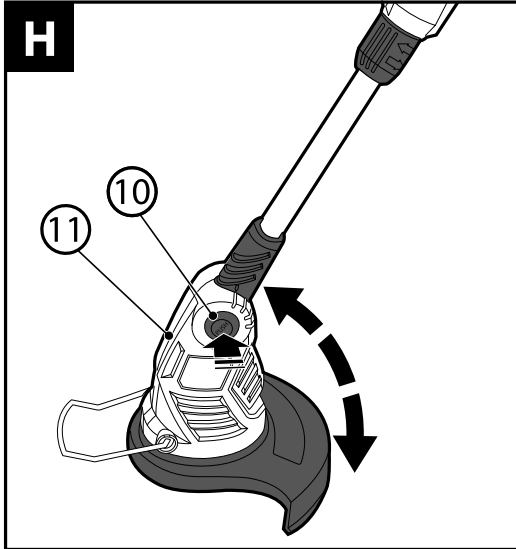
<b>1. USE AND TAKING CARE OF YOUR POWER TOOL</b> .....	7
<b>2. INTENDED USE AND COMPONENTS OF THE GRASS TRIMMER</b> .....	10
<b>3. TECHNICAL DATA</b> .....	11
<b>4. BEFORE USE</b> .....	12
<b>5. OPERATION</b> .....	13
<b>6. TRANSPORTATION</b> .....	15
<b>7. TROUBLESHOOTING GUIDE</b> .....	15
<b>8. MANUFACTURER</b> .....	15
<b>9. PROTECTION OF THE ENVIRONMENT</b> .....	15
<b>10. EXPLODED VIEW AND SPARE PART LIST</b> .....	16
<b>WARRANTY</b> .....	18



МАГАЗИН МАЙСТОРА  
БАШ МАЙСТОРА®  
ПРОФЕСІОНАЛНИ РЕШЕННЯ









**BEFORE YOU START USING THE MACHINE READ THOROUGHLY THIS MANUAL.**

Keep this document for future reference.

**⚠ WARNING!** Read all safety warnings marked with a symbol **⚠** and all operating safety instructions.

To limit the risk of fire, electric shock and injury while using the device, follow all operating safety instructions and tips provided below.

Keep all work safety instructions and tips for future reference. In warnings provided here in the expression "power tool" means a power tool powered from the mains (with a power cord) or a battery powered power tool (cordless).

**⚠ WARNING!** General work safety warnings for use of the tool.

**Work place safety**

- a) Keep your workplace tidy and well lit. Untidiness and bad lighting result in higher accident rate.
- b) Do not use the power tool in explosive environments, created by flammable liquids, gases or dusts. The power tool generates sparks that can ignite dust or vapors.
- c) Keep children and unauthorized persons away from the place where the power tools are used. Inattention may result in losing control over your power tool.

**⚠ WARNING!** General warnings regarding the use of power tools.

**Electric safety**

- a) Plugs used in power tools must match wall outlets. Never modify the plug of your power tool. Do not use any extension cables when operating a power tool with a grounding/earthing conductor (PE). Any modifications of plugs and outlets increase the risk of electric shock.
- b) Avoid touching earthed surfaces or grounded items like pipes, heaters, central heating radiators and refrigerators. Touching earthed or grounded surfaces increases the risk of electric shock.
- c) Do not expose your power tool to rain or damp environments. Water penetrating the tool increases the risk of electric shock.
- d) Do not damage the power cord. Never use the power cord to carry, pull the power tool and do not pull by its power cord to disconnect plug from the outlet. Keep the power cord away from sources of heat, oils, sharp edges and moving parts. Damage done tangled power cords increase the risk of electric shock.
- e) When your power tool is operated outdoors use extension cords intended for outdoor use only. Using an extension cable intended for outdoor use decreases the risk of electric shock.
- f) It is recommended to connect the device to a mains supply equipped with a residual current device (RCD) with a rated current of 30 mA or less.
- g) When it is unavoidable to use your power tool in a damp environment use an RCD (Residual Current Device) for protection. The use of RCDs decreases the risk of electric shock.

**⚠ WARNING!** General warnings regarding the use of power tools.

**Personal safety**

- a) This equipment is not intended for use by persons (including children) disabled physically, mentally, sensorial or persons with no experience and knowledge in operating the equipment unless they operate the equipment under supervision or follow user's instructions provided by persons responsible for their safety.

- b) It is necessary to predict steps, watch and keep common sense when using power tools. Do not operate power tools when you are tired, under influence of drugs, medicine or alcohol. A moment of inattention while operating a power tool may result in serious personal injury.
- c) Use personal protective equipment (PPE). Always wear safety goggles. Wearing personal protective equipment (PPE) including a dust mask, anti-slippery footwear, a helmet and earprotection reduces personal injury.
- d) Avoid unexpected start up. Before connecting your power tool to the mains and/or inserting a battery make sure its power switch is in off position. Carrying your power tool with a finger on its power switch or without disconnecting it from the mains (switched on) may result in an accident.
- e) Before starting your power tool remove any keys/wrenches. Leaving a key/wrench in the rotating part of your power tool may result in personal injury.
- f) Do not lean forward too far. Always remain stable and maintain balance. It will allow you to have a better control over your power tool in unpredictable situations.
- g) Wear appropriate clothing. Do not wear loose clothes or jewelry. Keep your hair tied. Keep your clothes away from moving parts. Loose clothes, jewelry or long hair may be caught by moving parts.
- h) If your power tool allows for using an external dust extraction or collection system, make sure it is connected and used properly. Using dust collectors may reduce dust affected risks. Do not let your skills gained through the frequent use of the power tool make you overconfident and disregard safety rules. Carelessness may cause injury in a fraction of a second.

 **WARNING!** General warnings regarding the use of power tools.

## 1. USE AND TAKING CARE OF YOUR POWER TOOL

- a) Do not overload your power tool. Use a power tool with power adjusted to work being done. An appropriately chosen power tool will allow you to work better and safer under load it has been designed for.
- b) Do not use a power tool when its power switch is out of order (it does not switch it on or off). Any power tool with its power switch out of order is dangerous and must be repaired.
- c) Always disconnect the plug from the power source and/or disconnect its battery before changing any settings, performing replacement or storage. Such preventive measures reduce the risk of accidental power tool start up.
- d) Keep your power tool out of reach of children and do not allow unauthorized persons to use the power tool. Power tools in hands of untrained persons can be dangerous.
- e) Power tools require maintenance. Check power tools for concentricity or jamming of moving parts, any cracks and all other factors affecting the power tool work safety. If any damage to the power tool is detected, it should be repaired before use. Improper power tool maintenance is a reason for many accidents.
- f) Cutting tools should be sharp and clean. Keeping sharp cutting edges in good condition reduces the risk of jamming and facilitates operation.
- g) Power tools, equipment, working tools etc. should be used according to this user's manual taking into account operating conditions and the work to be done. Misusing a power tool can result in dangerous situations.
- h) At low temperatures and after a long break in operation it is recommended to turn the power tool to operate it with no load for a few minutes to provide proper grease distribution inside its driving mechanism.
- i) Use soft, damp (cannot be wet) cloth and soap to clean power tools. Do not use petrol, solvents and other agents that may damage your equipment.
- j) Power tools can be stored/carried after making sure that all moving components are locked and

protected against release with original devices intended for this purpose.

k) Store power tools in a dry, dust and water-protected place.

l) Carry your power tool in its original packaging to provide protection against mechanical damage.

m) Keep handles and grip surfaces clean and free from oil and grease. Secure grip and control over the tool in unexpected circumstances are impossible if handles and grip surfaces are slippery.

**⚠ WARNING!** General warnings regarding the use of power tools.

Repair: Under no circumstances repair damaged batteries. AH activities related to battery repair may be performed only by the manufacturer or by authorised service centres.

**⚠ WARNING!** While operating power tools it is necessary to observe basic work safety rules to avoid fire, electric shock or mechanical injury.

**⚠ WARNING!** Lithium grass trimmer, detailed guidelines for safe use:

1. Do not let children or people who have not read the manual use the grass trimmer.
2. Always check the condition of the device and make sure none of the rotating parts is damaged and the line spool is installed and secured correctly before starting the cordless grass trimmer, referred to as the trimmer.
3. Before using the trimmer and after each impact, look for signs of wear or damage and repair it if necessary.
4. Make sure animals and people keep at a safe distance from the trimmer (at least 5 metres).
5. Stop the trimmer if animals or people, especially children, are nearby.
6. Remove all objects (stones, branches, etc.) from the lawn to be trimmed that could damage the trimming assembly or pose a threat when ejected by the line. If an obstacle is found during trimming despite preparation, switch the power tool off and remove it.
7. Be cautious, control your actions, and use common sense when using the trimmer. Do not use it when exhausted, under the influence of medicines, or intoxicated. A momentary inattention when using the device can pose a severe risk to your health.
8. Use the trimmer only during the day or in good artificial lighting.
9. Do not use the trimmer during rain or on a wet lawn.
10. Never use the machine with damaged or missing guards or safety devices.
11. Wear safety glasses or mask.
12. A trimmer operator should wear heavy-duty footwear with non-slip soles and long trousers to protect legs. Do not operate the device barefoot or in light sandals. It is advisable to use sturdy gloves and hearing protection (earmuffs or earplugs).
13. Keep the power tool away from your body during operation! Do not put your hands or legs near trimming parts, in particular when starting the motor.
14. Be careful not to hurt yourself on the line cutter. Always position the machine in its normal operating position before starting it if the line was pulled out.
15. Always hold the trimmer with both hands.
16. Do not touch hazardous moving parts before disconnecting the machine and stopping all hazardous moving parts completely.
17. Never use a metal wire in place of the nylon line. Use only original trimming lines. Never attach metal cutting accessories.
18. Keep your posture secure and stable when operating the device. Be careful when moving backwards, tripping hazard!
19. Never approach hard objects with the trimmer during operation. It is the only way to prevent



injury to the user and damage to the device.

20. Disconnect the battery when the trimmer is not used, when it is being relocated, and before any works on it (such as adjustment or cleaning).

21. Always make sure ventilation opening sare free of dirt.

22. Do not leave the device unattended at the place of operation. If you need to interrupt work, put the power tool somewhere safe.

23. Use only spare parts or accessories provided or recommended by the manufacturer.

24. In case of technical issues,contact a service centre.

25. Immediately disconnect the trimmer from the battery and get help in the case of an accident.

26. Immediately disconnect the trimmer from the battery in the case of a failure. Do not attemptto repair the device yourself. Bring the device to the manufacturer's service centre.

 **WARNING! Safe use of rechargeable batteries and battery chargers.**

### Using the battery

a) Use only the batteries that correspond to specifications required by the equipment manufacturer. Use of unsuitable batteries may lead to cracks and destruction of the battery, personal injuries or fires.

b) **WARNING:** In case of damage or improper use of the battery, explosive gases might be released. The battery must be kept away from fire and proper ventilation is to be assured during charging. It cannot be left for a longer period of time in a high temperature environment (areas with strong exposure to the sun, close to radiators or any other place with a temperature above 40 degrees).

e) The battery must be charged within the temperature range of 15 to 25°C.

d) Batteries can be charged exclusively with use of a power adapter recommended by the manufacturer of the tool. Application of any other power adapter may pose a risk of a fire.

r) Never expose the battery to the effect of water or moisture.

f) When another battery is to be charged in sequence the time gap between charging operations must be not less than 30 minutes.

g) In no case may you open the battery.

h) Under unfavourable conditions electrolyte may leak from batteries, be careful to avoid contacts with the liquid. In case of accidental contacts with the liquid wash the affected locations with water. When liquid penetrates eyes, seek also for medical assistance. The liquid that leaks from batteries may be a reason for irritation or scalds.

i) When the battery unit is not in use keep it far away from metallic items such as paper clips, coins, keys, nails, bolts or other metal things that may short the battery terminals. Shorts of battery terminals may cause burns or fires.

j) Never throw batteries to fireplaces.

k) Never charge a damaged battery.



The batteries are intended for multiple use and contain harmful lithium.

Upon the battery lifetime expires the battery must be disposed in accordance with environmental regulations. Discharge the battery first to the empty state and remove from the electric tool. Hand over to an organization that deals with utilization of batteries or take it back to the shop where the tool had been purchased.

### Using the charger

a) Use only dedicated power adapters to charge the battery.

Application of a power adapte, dedicated to charge another type of the battery unit poses a risk of fires.

- b) Do not disassemble the charger.
- c) The charger is designed exclusively for indoor use. It must not be exposed to water or moisture.
- d) Charge only in an ambient temperature between 15-25 degrees.
- e) Do not insert metal objects of anykind into the charger.

### Residual risk

Despite its intrinsically safe design, there is some residual risk to the device, which can be eliminated solely by the user.

The residual risk is related to the improper behaviour of the operator. The greatest risk is related to the following prohibited actions:

- Use by children;
- Misuse;
- Operation with other people, especially children, or animals nearby;
- Operation by people who have not read the Operating instruction;
- Operation without appropriate safety clothing and footwear for the operator;
- Operation with damaged guards and covers or without properly fitted safety devices.

The residual risk of using the trimmer can be eliminated if the recommendations in the Operating instruction are followed.

### Symbols on the nameplate and stickers on the device (Fig. B):

- 1: Warning! Read the manual before use!
- 2: Danger of injury from ejected parts! Keep bystanders at distance.
- 3: Do not let other people into the danger zone!
- 4: Keep away from moisture!
- 5: Wear safety glasses!
- 6: Wear hearing protection!
- 7: Guaranteed emitted noise level: 92 dB (A).

## 2. INTENDED USE AND COMPONENTS OF THE GRASS TRIMMER

The cordless grass trimmer is intended for trimming spots that cannot be reached with traditional household lawnmowers (around trees, near kerbs, etc.). Do not trim large areas that should be mowed with a traditional mower. The warranty is void if used for professional applications. The design of the device makes it very functional. The user can adjust the main handle height, angle of the adjustable hand die, angle of the head, and its rotation in relation to the handle.

The operating ambient temperature is 0°C to 40°.

NOTE: Never use the trimmer during precipitation and at increased humidity.

Do not use the trimmer otherwise than indicated above as it voids the warranty and manufacturer's liability for damage.

The parts of the grass trimmer are shown in Fig. A, C, F, I, H, I, J, and K. Any modifications introduced by the user void manufacturer's liability for damage and losses to the user and surroundings.

Appropriate use involves maintenance, storage, transport, and repairs as well.

The grass trimmer can be repaired only at service centres recommended by the manufacturer.

Mains-powered grass trimmers should be repaired by authorised persons only.

### The set includes:

- Lithium grass trimmer (1 pc)
- Safety guard (1 pc)
- Mounting screws (2 pcs)

**DEVICE COMPONENTS:**

The numbering of device elements refers to the drawing on pages 3-5 of the instruction manual:

Fig.A	Fig.D
1. Battery*	16. Charger*
2. On/off switch	17. Adapter*
3. Main handle	18. Battery level indicator button*
4. Safety button	19. Battery level indicator*
5. Adjustable handle	Fig.G
6. Lock knob	20. Spool button
7. Release button	21. Trimmer line
8. Clamping ring	22. Line cutter
9. Telescopic shaft	Fig.I
10. Head release button	23. Spool holder base
11. Grass trimmer head	Fig.J
12. Plant protector	24. Line spool
13. Safety guard	25. Spool cover
14. Battery lock button*	26. Spool holder release button
Fig.C	
15. Spool holder	

\* The accessories shown and described are not standard equipment. For the complete offer of auxiliary equipment, see our catalogue.

**3. TECHNICAL DATA**

Power: 20 V

No load speed: 8000 rpm

Cutting capacity: 230 mm

Nylon line diameter: Ø1.5 mm (round)

Charging time:

1 hour (with 2.0 Ah battery)

2 hours (with 4.0 Ah battery)

Running time:

50 minutes (with 2.0 Ah battery)

100 minutes (with 4.0 Ah battery)

Telescopic handle: Aluminium (28 cm)

Battery and charger are not included.

Acoustic pressure level(LpA): 74 dB(A)

Acoustic power (LwA): 90,28 dB(A)

Tolerance of measurements KLpA/KLwA: 2,5dB(A)/0,4 dB(A)

Mean vibration acc. to EN 50636-2-91

(tolerance of measurements - 1,5m/s<sup>2</sup>) ah: 3,436 m/s<sup>2</sup>

The vibration level value given refers to basic application of the tool. If the tool is used for other applications or with other tools, or if it is not maintained properly, the vibration level may differ from the values given. The above-mentioned causes may lead to higher exposure to vibrations during the whole work time.

One must implement additional safety measures to protect the operators from exposure to vibra-

tions, such as maintenance of the electric tool and work tools, assurance of proper hand temperature, or determination of the sequence of work operations.

The declared total vibrations and declared noise emissions were measured in accordance with a standard test method and may be used for tool comparison.

The declared total vibrations and noise emissions can be used in preliminary exposure assessment.

**WARNINGS:** The vibrations and noise emissions during the actual use of the power tool may differ from the declared values depending on how the tool is used and on the type of the work piece in particular.

Determine safeguards to protect the operator. They should be based on the estimated exposure under actual operational conditions (taking into account all parts of the operating cycle such as when the tool is switched off or idle except the start time).

#### 4. BEFORE USE

The grass trimmer is delivered in a cardboard box partially assembled. After removing the packaging, check whether all parts have been delivered and assemble necessary parts as instructed in the manual.

 **NOTE:** Make sure the battery is disconnected before any assembly or adjustments.

- Installation of the safety guard

Install the safety guard (13) before use. Slide the guard on the trimmer head (11), and then secure it with two screws provided with the device (see Fig. C).

- Charging the battery

**NOTE:** Battery and charger are not part of the delivery.

You can check the battery level with the battery level indicator button (18) (see Fig. D)

A single LED means the battery level is low, two LEDs mean medium level, and three LEDs mean full battery. Charge the battery fully before use.

#### Battery charging indicator

A green LED light indicates that the charger is connected to a power source. After the battery is connected, the red LED is on to indicate charging. Blinking green battery LEDs also indicate that the battery is charging and show the current battery level.

When the battery is fully charged, the red LED goes off and the green LED is on.

After charging, disconnect the charger and remove the battery.

**NOTE:** The battery may get slightly hot when charging. This is not a malfunction.

The lithium-ion battery can be charged at any moment, without detriment to its life.

Interrupting the charging process does not entail a risk of damaging the battery cells.

#### Using the adjustable handle

The adjustable handle (5) can be set to various positions:

To change the position, loosen the lock knob (6) and move the adjustable handle (5). Tighten the lock knob to secure the handle in place (see Fig. A1).

#### Adjustment of the length of the telescopic shaft

The length of the grass trimmer can be adjusted to your height with the telescopic shaft (9):

Hold the telescopic shaft (9) with one hand and UNLOCK the lock ring (8) as shown by the arrow. (see Fig. F).

Slide the shaft to the right length and LOCK it by turning the lock ring.

### Moving the trimmer head

1. Press the release button (7) (see Fig. F).
2. Rotate the telescopic shaft (9) by 180°, to set the trimmer head (11) in the vertical trimming position (or for edge trimming), and release the button to lock the head in place.

### Manual adjustment of the trimmer line

**NOTE:** Disconnect the battery before adjusting the line.

To extend the line, press the spool button (20) and at the same time, pull the end of the line (21) (see Fig. G). When the trimmer is started, the excess length of the line is cut by the line cutter (22) on the safety guard.

### Automatic adjustment of the trimmer line

If the line gets damaged during operation, press the trimmer vertically into hard ground to activate the spool button (20) with the motor running. The centrifugal force will pull the line from the spool. It will be cut to the right length by the cutter on the safety guard.

### Trimmer angle adjustment

The trimmer angle can be adjusted to four positions. To do this, press the trimmer head release button (10), set the angle and release the button (see Fig. H).

## 5. OPERATION

### Switching the trimmer on and off

 **NOTE!** The trimmer can be started in the operating position only with the rotor near the ground and the user holding their hands on the main and adjustable handles.

The trimmer has a safety button (4) to improve safety. It prevents accidental activation of the tool.

- To start the device, press the safety button (4), hold it down, and press the on/off switch (2) (see Fig. A)
- To switch it off, release the on/off switch (2).

After use, disconnect the battery and check the trimmer for damage.

Store the trimmer out of the reach of children when not in use.

### Operation guidelines:

#### Grass trimming

Do not trim wet grass. Trim dry grass for the best results.

Hold the trimmer at 20° and swing it left and right. Make sure to keep the device far from your body.


Only grass not taller than 15 cm can be trimmed effectively. Higher grass should be trimmed in a few passes, starting from the top.

Do not approach hard objects with the trimmer not to increase line consumption excessively.

#### Trimming around shrubs and trees

Be particularly careful when trimming grass around shrubs and trees. Do not touch them with the trimmer line. Bark damage can cause wither. The plant protector (12) makes manoeuvring easier by preventing the line from touching tree bark.

### Replacement of the trimming component:

 **NOTE:** Disconnect the battery before replacing the trimming component! Use only spare parts and accessories recommended by the manufacturer.

1. Switch the trimmer off and wait for all parts to stop moving.
  2. Remove the battery.
  3. Remove the spool holder (15) from the trimmer. To do this, hold the outer part of the spool holder base (23) and press the spool holder release buttons (26) with the other hand at the same time. Rotate the spool holder as indicated by the REMOVE arrow (see Fig.11, page 5). The spool cover (25) and spool (24) can be disassembled easily now (see Fig. J, page 5).
- ⚠ NOTE!** There is a spring in the base, which can become lost quickly. Make sure it is stored safely.
4. Select OPTION 1 or OPTION 2 below to replace the spool or line.

#### Option 1: spool replacement

1. Use a replacement spool.
2. Thread the line (21) through the eyehole in the spool cover (25) and slide the spool in (24) (see Fig.J).
3. Make sure the spring is in, install the spool and spool cover back into the spool holder base (23). To do this, press the spool holder (15) and rotate it right until it locks (see Fig.12).
4. To check whether the line slides correctly, press the spool button (20) with your thumb and pull the line (21) with your fingers at the same time (see Fig. G). The line should slide freely.

#### Option 2: use replacement

The trimmer line can be purchased from your local distributor.

To install a line:

1. Thread about 3 mm of one end of the line (21) through the spool opening (24) (see Fig. K).
2. Carefully rewind the line onto the spool evenly as indicated by the arrow on the spool until the line reaches the dents on the edge of the spool. Do not wind an excessive amount of line. The spool can hold about 6.5 m of line.

#### Maintenance and storage

Generally, the machine does not require special maintenance. To ensure safe and efficient operation, clean the device immediately after each use.

**⚠ CAUTION:** Remember to always disconnect the battery from the tool prior to starting the cleaning operations and unplug the charger from the outlet.

(lean dirty parts and ventilation openings with a brush after use. (lean the housing and plastic parts with a mild detergent and a damp cloth. Prevent water from penetrating the inside of the device. Do not use aggressive cleaning agents or solvents for cleaning!

The charger may be cleaned exclusively with use of a dry cloth.

The tool must be stored in a place that is not accessible to children and must be kept clean and protected from moisture and dust. The storage conditions should prevent potential mechanical damage and impact of the weather conditions.

## 6. TRANSPORTATION

Store and transport the tool in its transport box to protect it against humidity, dust penetration and small objects; remember to protect its ventilation openings. Small objects after getting into the casing can result in damage to the motor.

If the battery is removed for transport or storage, make sure the contacts will not short circuit.

Remove metal items such as screws, nails, clasps, loose bits, wires, or metal filings from the case or transport container or otherwise prevent them from touching the battery.

## 7. TROUBLESHOOTING GUIDE

PROBLEM	POSSIBLE CAUSE	REMEDY
The grass trimmer does not work.	The grass trimmer does not work.	Check the battery status, recharge or replace with a new one when necessary. When the problem persists hand over the tool for repair at a service workshop. Please refer to the warranty sheet for addresses of authorized workshops.
Irregularities of the motor operation.	Battery low.	Recharge the battery.
	Worn carbon brushes of the motor.	Have the brushes replaced at a service workshop.

## 8. MANUFACTURER

This appliance is in conformity with national and European standards as well as with general safety guidelines.

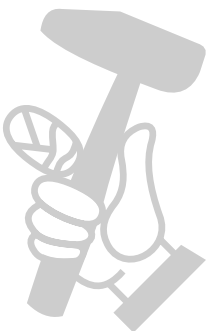
**NOTE:** In case of technical issues, contact an authorised technical service. Any repairs are allowed to be carried out exclusively by qualified staff with use of original spare parts.

## 9. PROTECTION OF THE ENVIRONMENT

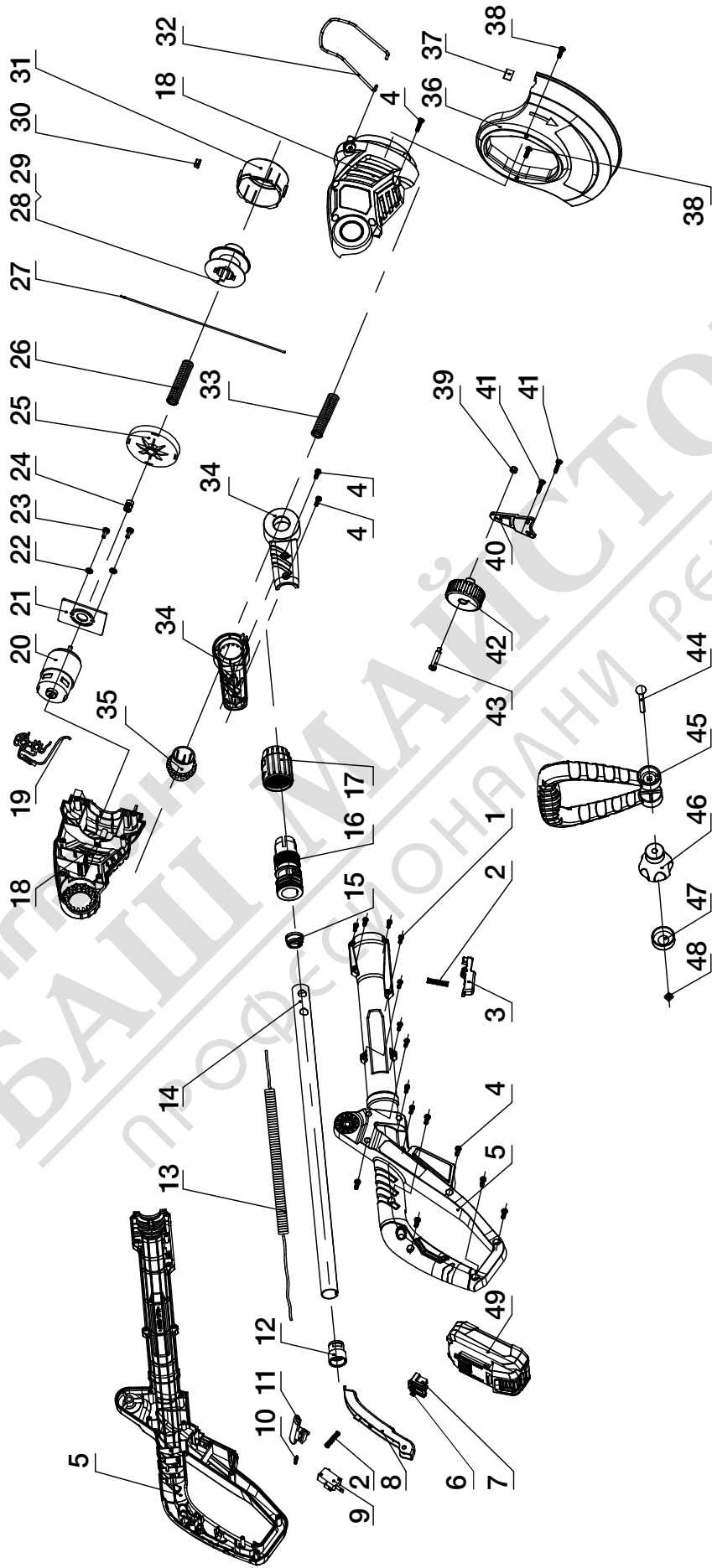
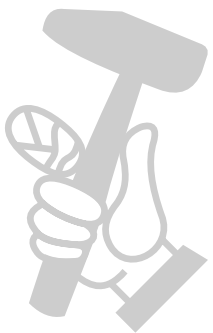


**NOTE:** The symbol nearby denotes that old equipment must never be thrown away together with other waste (with the penalty of a fine). Hazardous components of electronic equipment may adversely affect the natural environment and human health.

Each household may contribute to the recovery and reuse (recycling) of old machinery and equipment. In Europe a system for recovery of used equipment either exists or is being created. The system obliges all organizations that sell such equipment to collect the used machinery and appliances. Moreover, general purpose collecting points for such equipment are available.



10. EXPLODED VIEW AND SPARE PART LIST





No.	Part name
1	Self-tapping screw
2	Spring
3	Tighten the pushbutton
4	Self-tapping screw
5	Left and right handle case
	Resistance
6	Body contact piece
7	Body contact frame
8	Switch the pushbutton
9	Switch on it
10	Spring
11	Putter rod
12	Positioning sleeve
13	Spring line
14	Aluminum takeover
15	Lead sleeve
16	Intermediate coupling sleeve
17	Lock the nut
18	Motor cylinder
19	Intance
20	Motor
21	Motor positioning plate
22	Ppad
23	Mechanism screws
24	Inested
25	Cable tray frame
26	Spring
27	Nylon rope
28	Disc
29	Disc cap

No.	Part name
30	Outset
31	Discover
32	Protect the steel wire
33	Spring
34	Left and right rod housing
35	Lock the pushbutton
36	Protective shield
37	The Blade
38	Self-tapping screw
39	Anti-loose nuts
40	Remb wheel fixing frame
41	Self-tapping screw
42	Frib wheel
43	Stted spherical cylindrical shaft screw
44	Bolts
45	Auxiliary handle
46	Handle knob
47	Handle-knob cap
48	M6 square nut
38	Self-tapping screw
39	Anti-loose nuts
40	Remb wheel fixing frame
41	Self-tapping screw
42	Frib wheel
43	Stted spherical cylindrical shaft screw
44	Bolts
45	Auxiliary handle
46	Handle knob
47	Handle-knob cap
48	M6 square nut

## WARRANTY CARD

Product model	Date of sale
Serial number	Company
Username	Client's signature

The product is in good conditions and fully complete. Read and agree the terms of the warranty.

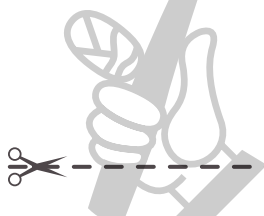
## GUARANTEE

The warranty period starts from the date of sale of the products and covers 2 years for all power products.

During the warranty period, free failures caused due to the use of poor-quality materials in the production and manufacturer workmanship admitted fault are removed. The guarantee comes into force only when warranty card and cutting coupons are properly filled. The product is accepted for repair in its pure form and full completeness.

## WARRANTY DOES NOT COVER

- Mechanical damage (cracks, chips, etc.) and damage caused by exposure to aggressive media, foreign objects inside the unit and air vents, as well as for damage occurred as a result of improper storage (corrosion of metal parts);
- Failures caused by overloading or product misuse, use of the product for other purposes. A sure sign of overload products is melting or discoloration of parts due to the high temperature, simultaneous failure of two or more nodes, teaser on the surfaces of the cylinder and the piston or destruction of piston rings. Also, the warranty does not cover failure of the automatic voltage regulator due to incorrect operation;
- Failure caused by clogging of the fuel and cooling systems;
- Wearing parts (carbon brushes, belts, rubber seals, oil seals, shock absorbers, springs, clutches, spark plugs, mufflers, nozzles, pulleys, guide rollers, cables, recoil starter, chucks, collets, removable batteries, filters and safety elements, grease, removable devices, equipment, knives, drills, etc.);
- Electrical cables with mechanical and thermal damage;
- Product opened or repaired by a non-authorized service center.
- Prevention, care products (cleaning, washing, lubrication, etc.), installation and configuration of the product;
- Natural wear products (production share);
- Failures caused by using the product for the needs related to business activities;
- If the warranty card is empty or missing seal (stamp) of the Seller;
- The absence of the holder's signature on the warranty card.



<b>DAEWOO</b>	<b>DAEWOO</b>	<b>DAEWOO</b>
Product _____	Product _____	Product _____
Model _____	Model _____	Model _____
Company _____	Company _____	Company _____
Date of sale _____	Date of sale _____	Date of sale _____



**DAEWOO**

POWER PRODUCTS



МАГАЗИН МАЙСТОРА®  
БАШ ПРОФЕССИОНАЛЬНЫЕ РЕШЕНИЯ

[www.daewoopowerproducts.com](http://www.daewoopowerproducts.com)

Manufactured under license of **Daewoo International Corporation**, Korea