

HONDA

HHB36BXB

Cordless Blower

Souffleur sans fil

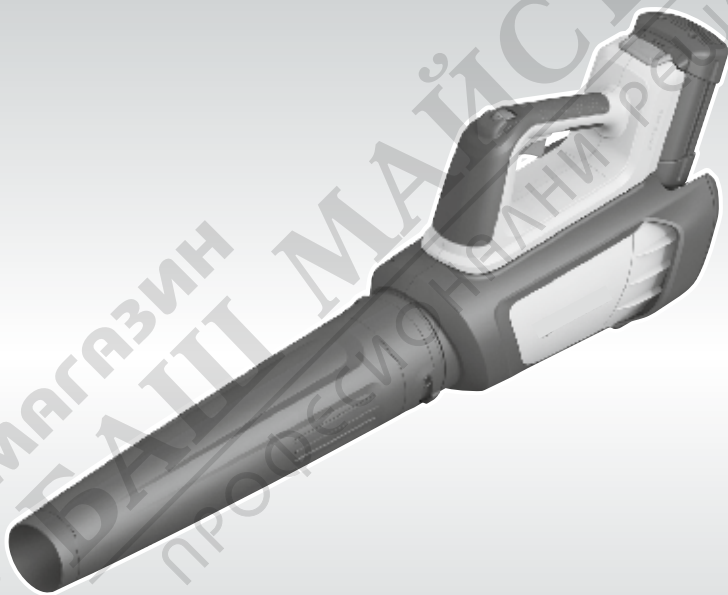
Laubbläser

Soffiatore cordless

Draadloze bladblazer

Sladdlös lövblås

Bezdrôtový fukár



Owner's Manual (Original Instructions)

Manuel d'utilisation (Instructions d'origine)

Betriebsanleitung (Originalanleitung)

Manuale utente (Istruzioni originali)

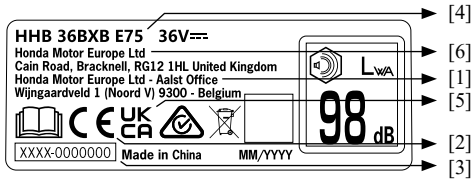
Gebruikershandleiding (Originele instructies)

Instruktionsbok (Originalinstruktioner)

Návod na použitie (Preklad pôvodného návodu na použitie)

English

Identification of Machine



- [1] Name and address of the EU importer
- [2] Conformity mark according to EC directive(s)
- [3] Serial number
- [4] Model-type
- [5] Conformity mark according to UK Statutory Instruments
- [6] Name and address of the manufacturer

For clarification of all other safety warnings and symbols, please refer to the appropriate sections within the owner's manual.

Safety Notes

Explanation of symbols on the machine



General hazard safety alert.



Read instruction manual.



Do not expose to rain.



WARNING: Beware of thrown objects.



WARNING: Keep bystanders away.



Wear eye and ear protection.



WARNING: Disconnect battery before maintenance.

General Power Tool Safety Warnings

⚠ WARNING Read all safety warnings, instructions, illustrations and specifications provided with this power tool. Failure to follow all instructions listed below may result in electric shock, fire and/or serious injury.

Save all warnings and instructions for future reference. The term "power tool" in the warnings refers to your battery-operated (cordless) power tool.

Work area safety

- ▶ **Keep work area clean and well lit.** Cluttered or dark areas invite accidents.
- ▶ **Do not operate power tools in explosive atmospheres, such as in the presence of flammable liquids, gases or dust.** Power tools create sparks which may ignite the dust or fumes.
- ▶ **Keep children and bystanders away while operating a power tool.** Distractions can cause you to lose control.
- ▶ **Other persons and animals should remain at a distance of 3 metres or more when the machine is being used.** Dirt should never be blown in the direction of bystanders.
- ▶ **Stay alert for hazards that cannot be heard when operating the leaf blower.**
- ▶ **Be careful not to trip over the machine when placing it on the ground.**
- ▶ **The user is responsible for accidents or hazards occurring to other people or their property.**

Electrical safety

- ▶ **Avoid body contact with earthed or grounded surfaces, such as pipes, radiators, ranges and refrigerators.** There is an increased risk of electric shock if your body is earthed or grounded.
- ▶ **Do not expose the power tool to rain or wet conditions.** Water entering a power tool will increase the risk of electric shock.
- ▶ **Avoid all bad weather conditions, especially when there is a risk of lightning.**
- ▶ **Do not abuse the cord. Never use the cord for carrying, pulling or unplugging the power tool. Keep cord away from heat, oil, sharp edges or moving parts.** Damaged or entangled cords increase the risk of electric shock.
- ▶ **When operating a power tool outdoors, use an extension cord suitable for outdoor use.** Use of a cord suitable for outdoor use reduces the risk of electric shock.
- ▶ **If operating a power tool in a damp location is unavoidable, use a residual current device (RCD) protected supply.** Use of an RCD reduces the risk of electric shock.

Personal safety

- ▶ **Stay alert, watch what you are doing and use common sense when operating a power tool. Do not use a power tool while you are tired or under the influence of drugs, alcohol or medication.** A moment of inattention while operating power tools may result in serious personal injury.
- ▶ **Use personal protective equipment. Always wear eye protection.** Protective equipment such as a dust mask, non-skid safety shoes, hard hat or hearing protection used for appropriate conditions will reduce personal injuries.

- ▶ **Prevent unintentional starting. Ensure the switch is in the off-position before connecting to power source and/or battery pack, picking up or carrying the tool.** Carrying power tools with your finger on the switch or energising power tools that have the switch on invites accidents.
- ▶ **Remove any adjusting key or wrench before turning the power tool on.** A wrench or a key left attached to a rotating part of the power tool may result in personal injury.
- ▶ **Wear suitable clothing, including long trousers. Do not wear loose clothing or jewellery. Keep your hair and clothing away from moving parts.** Loose clothes, jewellery or long hair can be caught in moving parts.
- ▶ **Do not overreach. Keep proper footing and balance at all times.** This enables better control of the power tool in unexpected situations.
- ▶ **Do not run with the power tool.**
- ▶ **Always use the product at waist level on the ground.**
- ▶ **If devices are provided for the connection of dust extraction and collection facilities, ensure these are connected and properly used.** Use of dust collection can reduce dust-related hazards.
- ▶ **Do not let familiarity gained from frequent use of tools allow you to become complacent and ignore tool safety principles.** A careless action can cause severe injury within a fraction of a second.

Power tool use and care

- ▶ **Do not force the power tool. Use the correct power tool for your application.** The correct power tool will do the job better and safer at the rate for which it was designed.
- ▶ **Do not use the power tool if the switch does not turn it on and off.** Any power tool that cannot be controlled with the switch is dangerous and must be repaired.
- ▶ **Disconnect the plug from the power source and/or remove the battery pack, if detachable, from the power tool before making any adjustments, changing accessories, or storing power tools.** Such preventive safety measures reduce the risk of starting the power tool accidentally.
- ▶ **Store idle power tools out of the reach of children and do not allow persons unfamiliar with the power tool or these instructions to operate the power tool.** Power tools are dangerous in the hands of untrained users.
- ▶ **Maintain power tools and accessories. Check for misalignment or binding of moving parts, breakage of parts and any other condition that may affect the power tool's operation. If damaged, have the power tool repaired before use.** Many accidents are caused by poorly maintained power tools.
- ▶ **Use the power tool, accessories and tool bits etc. in accordance with these instructions, taking into account the working conditions and the work to be performed.** Use of the power tool for

operations different from those intended could result in a hazardous situation.

- ▶ **Keep handles and grasping surfaces dry, clean and free from oil and grease.** Slippery handles and grasping surfaces do not allow for safe handling and control of the tool in unexpected situations.
- ▶ **Never spray the product with water. Never immerse the product in water.**
- ▶ **Only operate the product with mounted nozzle.**
- ▶ **Blow garden waste only.** Do not blow or use the product near hot, flammable or explosive material. Do not blow snow or objects that could become a projectile. Do not use the blower as a propulsion for vehicles (e.g. skateboard).
- ▶ **The machine continues to blow for a few seconds after being switched off.** Allow the motor to stop rotating before switching on again. Do not rapidly switch off and on.
- ▶ **This product is not intended for use by persons (including children) with reduced physical, sensory or mental capabilities, or lack of experience and knowledge, unless they have been given supervision or instruction concerning use of the appliance by a person responsible for their safety.** Children should be supervised to ensure that they do not play with the product.
- ▶ **Keep all cooling air inlets clear of debris.**
- ▶ **Do not modify the product.** Unauthorised modifications may impair the safety of your product and may result in increased noise and vibration.
- ▶ **Always start the product at a low speed level, especially in cold temperatures.**
- ▶ **Do not place other objects on the product.**
- ▶ **Do not use the product in closed rooms where dust can be inhaled.**
- ▶ **If the tool exhibits unusual noise or vibration, especially from the fan, return it to the service centre.**

Safety Instructions and Recommendations for Optimal Handling of the Battery

- ▶ **Ensure the product is switched off before inserting the battery.** Inserting the battery into a product that has the switch on can cause accidents.
- ▶ **Use only Honda batteries intended specifically for this product.** Use of any other batteries may create a risk of injury and fire.
- ▶ **Do not open the battery.** There is a risk of short-circuiting.



Protect the battery against heat (e.g., against continuous intense sunlight), fire, water and moisture. There is a risk of explosion.



- ▶ **Keep the battery not being used away from paper clips, coins, keys, nails, screws or other small metal objects, that can make a connection from one terminal to another.** Shorting the battery terminals together may cause burns or a fire.

- ▶ **In case of damage and improper use of the battery pack, vapours may be emitted.** Ventilate the area and seek medical help in case of complaints. The vapours can irritate the respiratory system.
- ▶ **Only use the battery with products from the manufacturer.** This is the only way in which you can protect the battery against dangerous overload.
- ▶ **The battery can be damaged by pointed objects such as nails or screwdrivers or by force applied externally.** An internal short circuit may occur, causing the battery to burn, smoke, explode or overheat.
- ▶ **Do not short-circuit the battery.** There is a risk of explosion.
- ▶ Protect the battery against moisture and water.
- ▶ Store the product and battery only within a temperature range between -20°C and 50°C . As an example, do not leave the battery in the car in summer.
- ▶ Occasionally clean the venting slots of the battery using a soft, clean and dry brush.

Garden blower safety warnings

- ▶ **Do not use the machine in bad weather conditions, especially when there is a risk of lightning.** This decreases the risk of being struck by lightning.
- ▶ **Thoroughly inspect the area for wildlife where the machine is to be used.** Wildlife may be injured by the machine during operation.
- ▶ **Thoroughly inspect the area where the machine is to be used and remove all stones, sticks, wires, bones, and other foreign objects that can ricochet, be thrown, or otherwise cause injury or damage during operation.** Thrown objects can increase the risk of personal injury.
- ▶ **Before use, check the supply cord and any extension cord for signs of damage or aging. Do not touch the cord before disconnecting the supply. Do not use the machine if the cord is damaged or worn.** A damaged supply cord may result in electric shock, fire and/or serious injury
- ▶ **Wear eye protection and ear protection.** Adequate protective equipment will reduce the risk of personal injury.
- ▶ **While operating the machine, always wear non-slip and protective footwear. Do not operate the machine when barefoot or wearing open sandals.** This reduces the risk of injury to the feet.
- ▶ **While operating the machine, always wear long trousers.** Exposed skin increases the risk of injury from debris.
- ▶ **Do not wear loose fitting clothing or articles such as scarves, strings, chains, ties, etc., that could get drawn into the air inlets. Tie back or cover long hair to make sure it does not get drawn into the air inlets.** If any of these items are drawn into the air inlets, it can increase the risk of personal injury.

- ▶ **Keep bystanders away while operating the machine.** Thrown debris can increase the risk of personal injury.
- ▶ **Never point the blower nozzle in the direction of people or pets or in the direction of windows. Use extra caution when blowing debris near solid objects, such as trees, automobiles and walls that can cause debris to ricochet.** Thrown objects can damage property and increase the risk of personal injury.
- ▶ **Do not use the machine to blow anything that is burning or smoking, such as cigarettes, matches or hot ashes.** These ignition sources may increase the risk of fire.
- ▶ **Do not touch the fan while still in motion. Turn off the machine, wait until the fan stops and unplug the machine, before removing any part that may give access to the fan.** This reduces the risk of injury from moving parts.
- ▶ **When clearing jammed material or servicing the machine, make sure all power switches are off and the power cord is disconnected.** Unexpected actuation of the machine while clearing jammed material or servicing may increase the risk of personal injury.

Product Description and Specifications



Read all safety warnings and all instructions. Failure to follow the safety warnings and instructions may result in electric shock, fire and/or serious injury.

Please observe the illustrations at the end of this operating manual.

Intended Use

The product is intended for blowing leaves, garden waste such as grass, twigs and pine needles.

Product Features (see figure A)

The numbering of the product features refers to the illustration of the product on the graphics pages.

- (1) Controller for airflow speed
- (2) On/Off switch
- (3) Battery unlocking button
- (4) Battery
- (5) Nozzle attachment point
- (6) Nozzle
- (7) Charger
- (8) Battery charge status indicator
- (9) Air inlet
- (10) Type plate / Serial number

Technical Data

Cordless leaf blower		HHB36BXB E 75
Rated voltage ^{A)}	V	36
Airflow speed, max. ^{A)}	km/h	200
Volume flow rate, max.	m ³ /h	780
Weight according to EPTA-Procedure 01:2014 ^{A)}		
– without battery	kg	2.9
– with battery	kg	3.6 (2.0 Ah) – 4.1 (4.0 Ah) – 4.2 (6.0 Ah)
Serial number		see type plate on product
Recommended ambient temperature during storage	°C	-20 ... +60
Permitted ambient temperature during operation ^{B)}	°C	0 ... +40
Battery type		36V 2.0 Ah, 4.0 Ah, 6.0 Ah

A) Depends on battery in use

B) Limited performance at temperatures < 0°C

Noise/Vibration Information

Noise emission values determined according to **EN 50636-2-100**

Typically the A-weighted noise levels of the product are:

– Sound pressure level	dB(A)	84
– Uncertainty K	dB	= 2.5

Vibration total values ah (triax vector sum) and uncertainty K determined according to **EN 50636-2-100**

– Vibration emission value ah	m/s ²	< 2.5
– Uncertainty K	m/s ²	= 1.5

Mounting and Operation

► **Caution: Switch garden tool off and remove battery from machine before adjusting or cleaning.**

► **The battery has a double latch system for extra safety.** Press the release button once to disengage the battery from powering the tool, but allow it to sit on the second latch for transport around the garden, without activating the tool.

► **For best results, start the tool with full battery charge.** Charge status can be checked by pressing the button on the battery and reading the LED indicator.





The numbering of the product features refers to the illustration of the product on the graphics pages.

Action	Figure	Page
Delivery scope	A	49
Fitting the nozzle	B	49
Inserting/charging the battery	C	50
Switching on and off	D	50
Adjusting the airflow speed	E	50
Working Advice	F	50

Action	Figure	Page
Maintenance	G	51
Accessories	H	51

Symbols

The following symbols are important for reading and understanding the original instructions. Please take note of the symbols and their meaning. The correct interpretation of the symbols will help you to use the product in a better and safer manner.

Symbol	Meaning
	Movement direction
	Switching on
	Switching off
CLICK!	Audible noise
	Accessories

Troubleshooting

The following chart lists problem symptoms, possible causes and corrective action, if your machine does not operate properly. If these do not identify and correct the problem, contact your service agent.

Warning: Switch off before investigating fault.

Warning: In the event of an accident or tool breakage, stop the machine immediately and remove the battery.

Problem	Possible Cause	Corrective Measure
Machine fails to operate	Battery discharged	Recharge battery
	Battery not fully connected	Insert the battery correctly (see figure C)
	Battery too hot/cold	Allow to cool/warm. Always start the product at a low speed
	Machine defective	Contact dealer.
Garden tool functions intermittently	On/Off switch defective	Contact dealer.
	Controller for airflow speed damaged	Contact dealer.
Excessive vibrations/noise	Machine defective	Contact dealer.
Run time per battery charge too low	Battery has not been used for long period or only for short terms	Charge battery completely
	Defective battery	Replace battery
Machine blow	Tube obstructed	Clear tube
Reduced airflow	Air inlet obstructed	Clear air inlet
	Battery too cold	Allow to warm
Tube cannot be mounted on the machine	Incorrect assembly	Mount the tube correctly (see figure B)
Flashing red battery charge indicator	Battery not (properly) inserted	Properly insert battery in charger
	Battery contacts contaminated	Clean the battery contacts (e. g. by inserting and removing the battery several times) or replace the battery
No charging procedure possible	Battery defective	Replace the battery
	Battery charge indicators do not light up	Mains plug of battery charger not plugged in (properly)
Socket outlet, mains cable or battery charger defective		Check the mains voltage; have the battery charger checked by an authorised after-sales service agent for Honda power tools

Maintenance and Service

Maintenance, Cleaning and Storage

- ▶ **Have your product serviced only by a qualified specialist using only original replacement parts.**

This will ensure that the safety of the product is maintained.

- ▶ **Never service damaged battery packs.** Service of battery packs should only be performed by the manufacturer or authorised service providers.

After-Sales Service and Application Service

In the unlikely event that you encounter a problem with your product, please contact your Honda authorised service dealer.

Transport

The recommended lithium-ion batteries are subject to legislation on the transport of dangerous goods. The user can transport the batteries by road without further requirements.

When shipping by third parties (e.g.: by air transport or forwarding agency), special requirements on packaging and labelling must be observed. For preparation of the item being shipped, consulting an expert for hazardous material is required.

Dispatch battery packs only when the housing is undamaged. Tape or mask off open contacts and pack up the battery in such a manner that it cannot move around in the packaging. Please also observe the possibility of more detailed national regulations.

Disposal



The product, batteries, accessories and packaging should be sorted for environmental friendly recycling.



Do not dispose of the product and batteries/rechargeable batteries into household waste!

Only for EU countries:

According to the European Directive 2012/19/EU, products that are no longer usable, and according to the European Directive 2006/66/EC, defective or used battery packs/ batteries, must be collected separately and disposed of in an environmentally correct manner.

If disposed of incorrectly, waste electrical and electronic equipment may have harmful effects on the environment and human health, due to the potential presence of hazardous substances.

Battery packs/batteries:

Li-ion:

Please observe the notes in the section on transport (see "Transport", page 6).

Only for United Kingdom:

According to Waste Electrical and Electronic Equipment Regulations 2013 (2013/3113) and the Waste Batteries and Accumulators Regulations 2009 (2009/890), power tools that are no longer usable must be collected separately and disposed of in an environmentally friendly manner.

Only for Australia:

Honda Australia is a member of the Battery Stewardship Council and recommends customers responsibly recycle their batteries via the Bcycle (<https://bcycle.com.au/>) battery recycling scheme.