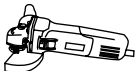




TOPPROFILE

SINCE 1946



Art./Item	
TOPPROFILE	230 V~ · 800 W · 3,5 A · 50/60 Hz · 11.000 RPM
TOPPROFILE-115V	110/120 V~ · 900 W · 8,2 A · 50/60 Hz · 11.000 RPM



INSTRUCTIONS FOR USE



Obligation



Prohibition



Danger



Read and store carefully.

1 | DRY PROFILER

- **EXCLUSIVELY** for processing porcelain tiles and stone materials.
- Only for professional use and only with MONTOLIT dedicated tools.
- **CAUTION!** Machine ready for use. Do not tamper.
- For better finishing and longer life of the tool, move forward slowly and do not force.

2 |

- Before leaving the production workshop, your machine was subjected to in depth testing in order to guarantee the quality, safety and efficiency of the product. Carefully following the instructions contained in this manual will assure a long life for your machine under normal operating conditions.
- Carefully read this instructions manual before using the machine to avoid accidents or malfunctions.
- Do not tamper in any way with the protections and guards provided by the manufacturer.
- Do not modify any part of the machine in any way.
- Any changes can be made only by the manufacturer.
- Use original spare parts only.
- Brevetti MONTOLIT declines all responsibility in the event of non-compliance.

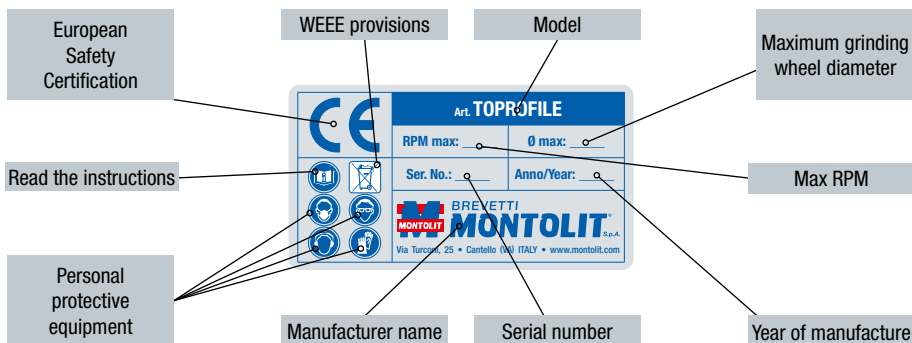
3 | SCRUPULOUSLY COMPLY WITH THE CURRENT REGULATIONS ON HYGIENE AND SAFETY IN THE WORKPLACE

- The use of suitable personal protective equipment for the hearing is required. Noise level > 85dB (A)
- The vibrations level was detected in accordance with the EN60745 standard.



If the machine is not correctly serviced and/or if the tools are worn or damaged, the vibrations level may differ.

4 | IDENTIFICATION PLATE



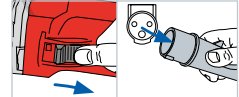


5 PREPARATION - ELECTRICAL POWER SUPPLY



CAUTION!

- Check the integrity of the grinder cable.
- Observe the voltage (V) and frequency (Hz) indicated on the grinder.
- To use an extension cord, use only an IP67 plug and socket (2P+T) and a 3 x 1.5 mm² H07RN-F type cable (max. length 5m).
- Check the position of the power supply cable: it must not interfere with manoeuvres and must not be subjected to shocks or damage.
- Remove the electrical connection in any cases of maintenance or replacement of the diamond grinding wheel.
- Do not force the motor during processing.
- In the event of grinder malfunctions, contact an expert or our Technical Office.



6 CORRECT POSITIONING AND USE - SAFETY DEVICES



IMPORTANT:
always activate the vacuum during use.

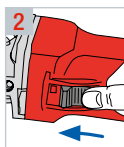
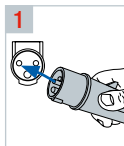


max 5m





- The operator must position himself in a safe and balanced manner and not become distracted during processing.
- The operator is always responsible for any accidents that may occur to other people or to their property.
- Do not allow other people to touch the machine or the cable. Keep all other persons away from the work area.
- We recommend wearing gloves and shoes with non-slip soles. Long hair must be gathered up or a protective cap must be worn. Wear protective goggles.
- Use adequate hearing protection.
- Do not wear loose clothing, objects or jewellery that could get caught in moving devices.
- The work area must be flat, dry, free of obstacles, well-ventilated and properly lit.
- Do not use the machine near flammable liquids or gas.
- Keep the cable away from high temperatures, oil and sharp edges.



IMPORTANT!

- Observe the advancement direction indicated by the arrow (from left to right).
- Carry out several passes until the end limit.
- For perfect 45° Miter cuts, rest and move the TO-PROFILE on the surface of the slab, respecting the feeding direction indicated on the machine. It is advisable to first use a diamond pads for a greater speed of implementation and a better yield of the diamond tool.

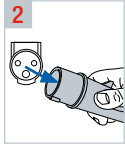
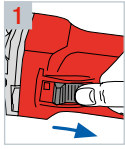


- Always work with the vacuum connected.





7 REPLACING THE DIAMOND GRINDING WHEEL



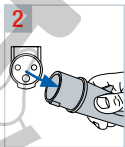
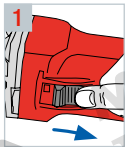
- Use only diamond grinding wheels that are the diameter and type established by the MONTOLIT[®] Patents.



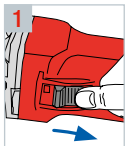
IMPORTANT!

- The diamond tool and its corresponding fixing system must always be in perfect condition.
- Using diamond tools with excessive wear, eccentricity and/or micro-cracks is dangerous.

8 REPLACING THE NYLON PLATE



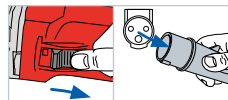
9 REPLACING THE END STOP RUNNER





10 | PERIODIC CLEANING - ROUTINE MAINTENANCE

- The machine must be switched off and the plug must be unplugged before cleaning, servicing or repairing the machine as well as before transport.
- Use only fabric cloths to clean the machine
- Do not use water and/or detergent products to clean the machine.
- Periodically check the machine cables; if they are damaged, have them repaired by authorised technical service.
- Keep the grips dry, clean and free of any oil or grease.



CAUTION!

A protection or other damaged part must be repaired correctly or replaced by authorised technical service, unless otherwise indicated in this instructions manual.

11 | DECOMMISSIONING

- Perform periodic cleaning and routine maintenance.
- Store all parts in a dry, safe place away from children.

12 | DISMANTLING THE MACHINE

- Comply with local regulations for the disposal of electrical products.
- It is possible to recover valuable materials through environmentally friendly scrapping.
- The electrical components used for construction are in compliance with RoHS 2 (2011/65/EC).
- Contact our Technical Department for further information.



13 | ACCESSORIES

- The machine comes with a key to be used for assembly/disassembly of the grinding wheel as well as this operation and maintenance manual.

14 | WARRANTY

Valid for 1 year from the sell date (invoice or shipping bill or fiscal sales receipt).

Failures resulting from improper use or normal wear and tear are excluded from this warranty.

Brevetti MONTOLIT always utilises and supplies first choice materials. It is this commitment to professionalism and commercial morality that elevates our company above the standard. Product safety and guarantee are a source of pride for us. An operational reality that is not made just of words, but also of real written guarantees. In fact, we insure all our products against damages that were involuntarily caused as a result of an accidental event that occurred due to a construction or manufacture defect on products even after their delivery and marketing.



The descriptions and illustrations given are intended for reference purposes only. The Producer reserves the right, apart from the essential characteristics of the models described and illustrated herein, to make changes to its products deemed necessary for the purpose of improvement or for any constructive or commercial need at any time, and without notice. Any total or partial reproduction of the work in any format and by any means or procedure, be it mechanical, photographic or electronic, without the prior authorisation of Brevetti MONTOLIT S.p.A. is prohibited. Any of the aforementioned activities could as a result lead to criminal proceedings.