

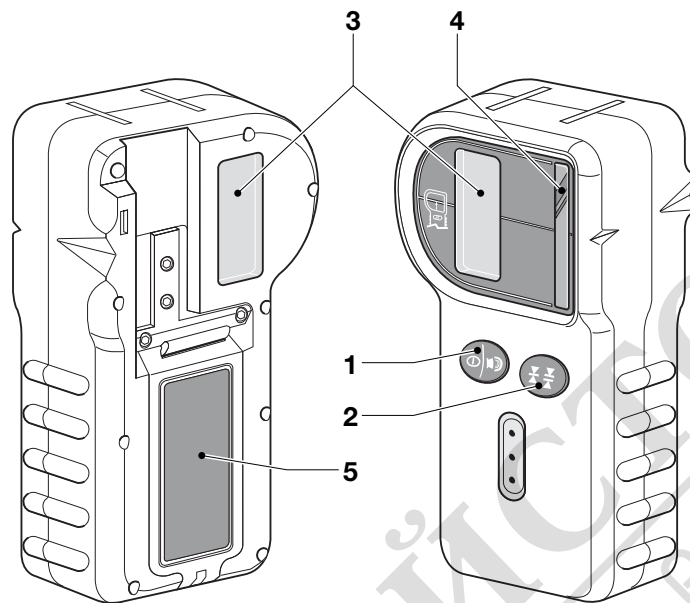
DEWALT

МАГАЗИН
БАШ МАЙСТЕРА
ПРОФЕСИОНАЛНИ РЕШЕНИЯ

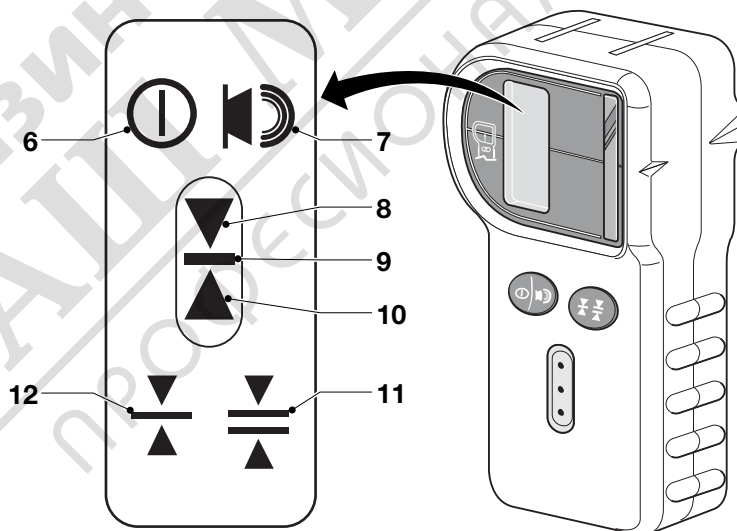


www.DEWALT.eu

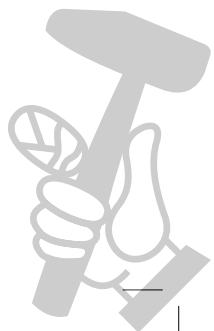
DE0772

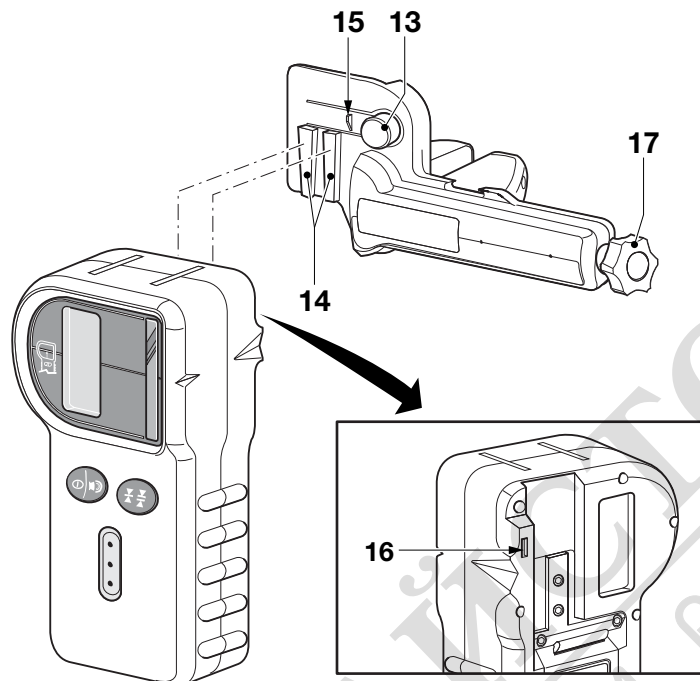


A

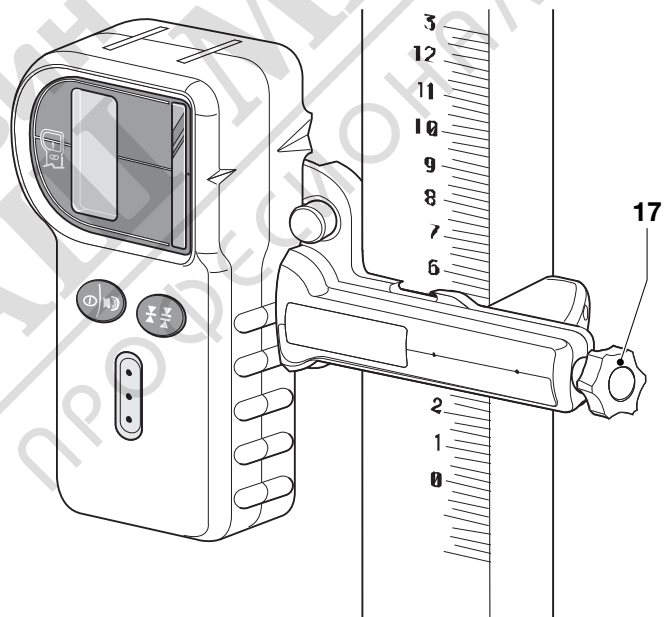


B

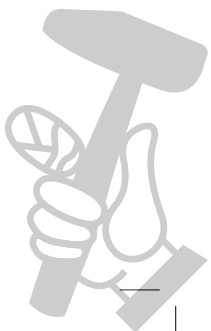




C1



C2



DIGITAL LASER DETECTOR DE0772

Congratulations!

You have chosen a DEWALT product. Years of experience, thorough product development and innovation make DEWALT one of the most reliable partners for professional users.

Technical data

	DE0772
Type	1
Voltage	V 9
Battery size	6LR61
Operating range (radius)	m 300
Weight	g 354

Definitions: Safety Guidelines

The definitions below describe the level of severity for each signal word. Please read the manual and pay attention to these symbols.



DANGER: Indicates an imminently hazardous situation which, if not avoided, **will result in death or serious injury.**



WARNING: Indicates a potentially hazardous situation which, if not avoided, **could result in death or serious injury.**



CAUTION: Indicates a potentially hazardous situation which, if not avoided, **may result in minor or moderate injury.**

NOTICE: Indicates a practice **not related to personal injury** which, if not avoided, **may result in property damage.**



Denotes risk of electric shock.



Denotes risk of fire.

Safety instructions

Always observe the safety regulations applicable in your country to reduce the risk of fire, electric shock and personal injury.

Read all of this manual carefully before operating the attachment. Also refer to the manual of any power tool that will be used with this attachment. Save this manual for future reference.

General

1 Keep work area clean

Cluttered areas and benches can cause accidents.

2 Keep children away

Do not let children come into contact with the tool or extension cord. Supervision is required for those under 16 years of age.

3 Use appropriate tool

The intended use is described in this instruction manual. Do not force small tools or attachments to do the job of a heavy-duty tool. The tool will do the job better and safer at the rate for which it was intended.



WARNING: The use of any accessory or attachment or performance of any operation with this tool, other than those recommended in this instruction manual may present a risk of personal injury.

Additional safety instructions for batteries

- Do not open or mutilate batteries for any reason.
- Do not expose batteries to water.
- Do not expose batteries to fire.
- Do not store batteries in locations where the temperature may exceed 40 °C.
- Use only the correct size of batteries. When replacing, do not mix old batteries with new ones.
- Under extreme conditions, battery leakage may occur. When you notice liquid leaking out, proceed as follows:
 - Carefully wipe the liquid off using a cloth. Avoid skin or eye contact. Do not swallow.
 - In case of skin or eye contact, rinse the liquid off with clean flowing water for at least 10 minutes and contact a doctor.



WARNING: Fire hazard! Avoid short-circuiting the contacts of a removed battery.

Package contents

The package contains:

- 1 Digital laser detector
- 1 Clamp
- 1 Battery
- 1 Instruction manual

- Take the time to thoroughly read and understand this manual prior to operation.

Description (fig. A)

This attachment is intended to be used with a rotary laser. It will not work with a stationary laser.

- 1 Power/Audio signal volume button
- 2 Accuracy mode button
- 3 Display
- 4 Beam detection window
- 5 Battery compartment cover

INTENDED USE

Your DE0772 digital laser detector has been designed to extend the capabilities of your DEWALT rotary laser. The detector helps locating the position of a laser beam in bright light conditions or over long distances. It produces both visual and audio signals as the rotating laser beam crosses the detector. The attachment can be used both indoor and outdoor whenever it is difficult to locate the laser beam.

DO NOT use under wet conditions or in presence of flammable liquids or gases.

The digital laser detector is a professional power tool.

DO NOT let children come into contact with the tool. Supervision is required when inexperienced operators use this tool.

Assembly and adjustment

Also refer to the manual of the tool to be used with this attachment.

Replacing batteries (fig. A)

The attachment uses batteries of type 6LR61.

- Open the battery compartment cover (5) (fig. A).
- Replace the battery. Make sure the new battery is placed according to the orientation as indicated.
- Close the battery compartment cover.

Installing the attachment (fig. A, C1 & C2)

The attachment can be used with or without the supplied clamp. The attachment can also be held by hand, e.g. against walls.

When used with the clamp, the attachment can be mounted to a grade rod, levelling pole, stud or post.

- Push in the release button (13) and slide the attachment over the rails (14) until the latch (15) engages in the recess (16) (fig. C1).
- Open the jaws of the clamp by loosening the clamp knob (17) (fig. C2).
- Hold the attachment at the desired position e.g. against a grade rod.
- Tighten the knob (17).

Instructions for use**WARNING:**

- Always observe the safety instructions and applicable regulations.
- Before first use, remove and discard the protective tape from the screens.

Switching on and off (fig. A & B)

- To switch on, press the button (1) (fig. A). The power-on sign (6) appears on the display (3) (fig. B).
- After it has not been used for about 30 minutes, the attachment switches off automatically.

Setting the audio signal volume (fig. A & B)

- Press the button (1) (fig. A). The volume will cycle from "high" to "low" to "off" each time the button is pressed. The volume level is indicated by the volume sign (7) on the display and the number of half circles accompanying the sign (fig. B).

Setting the detection accuracy (fig. A & B)

The attachment can be used in 2 accuracy modes (fig. B):

- Level detection at max. 3 mm accuracy difference. This mode is indicated by the sign (11) on the display.
- Level detection at max. 1 mm accuracy difference. This mode is indicated by the sign (12) on the display.
- To change the mode, press the button (1) (fig. A).

ENGLISH

Detecting the laser beam (fig. A & B)

- Set up the rotary laser at the desired position and switch it on.
- Switch on the attachment and position the front side toward the rotary laser. Remember to avoid looking into the laser beam.
- Move the attachment up or down within the approximate area of the laser beam until it detects the beam. Once the beam has been detected its relative position is shown on the display (3) while an audio signal is produced.
 - When the laser beam is above the level position the signal will beep rapidly and an arrow pointing downward (8) will appear on the display.
 - When the laser beam is slightly above the level position the signal will beep rapidly and an arrow pointing downward (8) to the level indicator line (9) will appear on the display.
 - When the laser beam is below the level position, the signal will beep slowly and an arrow pointing upward (10) will appear on the display.
 - When the laser beam is slightly below the level position, the signal will beep slowly and an arrow pointing upward (10) to the level indicator line (9) will appear on the display.
 - When the laser beam is at the level position the signal is constant and the level beam indicator line (9) will appear on the display.
- Adjust the height of the attachment as desired until the laser beam is at the level position. Mark the level position.

Consult your dealer for further information on the appropriate accessories.

MAINTENANCE

Your attachment has been designed to operate over a long period of time with a minimum of maintenance. Continuous satisfactory operation depends upon proper tool care and regular cleaning.

- Clean the housing using a soft cloth.
- If the housing has become dirty, e.g. from mud or wet concrete, flush it with water.



WARNING: Do not use a high-pressure cleaner to clean the attachment.

Protecting the Environment



Separate collection. This product must not be disposed of with normal household waste.



Should you find one day that your DEWALT product needs replacement, or if it is of no further use to you, do not dispose of it with household waste. Make this product available for separate collection.



Separate collection of used products and packaging allows materials to be recycled and used again. Re-use of recycled materials helps prevent environmental pollution and reduces the demand for raw materials.

Local regulations may provide for separate collection of electrical products from the household, at municipal waste sites or by the retailer when you purchase a new product.

DEWALT provides a facility for the collection and recycling of DEWALT products once they have reached the end of their working life. To take advantage of this service please return your product to any authorised repair agent who will collect them on our behalf.

You can check the location of your nearest authorised repair agent by contacting your local DEWALT office at the address indicated in this manual. Alternatively, a list of authorised DEWALT repair agents and full details of our after-sales service and contacts are available on the Internet at: www.2helpU.com.



Batteries

- When disposing batteries, think of the protection of the environment. Check with your local authorities for an environmentally safe way of battery disposal.

GUARANTEE

DEWALT is confident of the quality of its products and offers an outstanding guarantee for professional users of the product. This guarantee statement is in addition to and in no way prejudices your contractual rights as a professional user or your statutory rights as a private non-professional user. The guarantee is valid within the territories of the Member States of the European Union and the European Free Trade Area.

• 30 DAY NO RISK SATISFACTION GUARANTEE •

If you are not completely satisfied with the performance of your DEWALT tool, simply return it within 30 days, complete with all original components, as purchased, to the point of purchase, for a full refund or exchange. The product must have been subject to fair wear and tear and proof of purchase must be produced.

• ONE YEAR FREE SERVICE CONTRACT •

If you need maintenance or service for your DEWALT tool, in the 12 months following purchase, you are entitled to one service free of charge. It will be undertaken free of charge at an authorised DEWALT repair agent. Proof of purchase must be produced. Includes labour. Excludes accessories and spare parts unless failed under warranty.

• ONE YEAR FULL WARRANTY •

If your DEWALT product becomes defective due to faulty materials or workmanship within 12 months from the date of purchase, DEWALT guarantees to replace all defective parts free of charge or – at our discretion – replace the unit free of charge provided that:

- The product has not been misused;
- The product has been subject to fair wear and tear;
- Repairs have not been attempted by unauthorised persons;
- Proof of purchase is produced.
- The product is returned complete with all original components

If you wish to make a claim, contact your seller or check the location of your nearest authorised DEWALT repair agent in the DEWALT catalogue or contact your DEWALT office at the address indicated in this manual. A list of authorised DEWALT repair agents and full details of our after-sales service is available on the Internet at: www.2helpU.com

