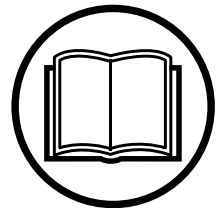


МАГАЗИН
БАШ МАЙСТОРА®
ПРОФЕСИОНАЛНИ РЕШЕНИЯ



**Operator's manual Manuel d'utilisation
Manual de instrucciones**

PP490



Please read the operator's manual carefully and make sure you understand the instructions before using the machine.

Lire attentivement et bien assimiler le manuel d'utilisation avant d'utiliser la machine.

Lea detenidamente el manual de instrucciones y asegúrese de entender su contenido antes de utilizar la máquina

US CA ES

KEY TO SYMBOLS

Symbols on the machine

WARNING! The machine can be a dangerous tool if used incorrectly or carelessly, which can cause serious or fatal injury to the operator or others.

Please read the operator's manual carefully and make sure you understand the instructions before using the machine.

Always wear:

- Approved protective helmet
- Approved hearing protection
- Protective goggles or a visor

Inspection and/or maintenance should be carried out with the motor switched off and the plug disconnected.

WARNING! Live parts.



Environmental marking. Symbols on the product or its packaging indicate that this product cannot be handled as domestic waste. It must instead be submitted to an appropriate recycling station for the recovery of electrical and electronic equipment.

By ensuring that this product is taken care of correctly, you can help to counteract the potential negative impact on the environment and people that can otherwise result through the incorrect waste management of this product.

For more detailed information about recycling this product, contact your municipality, your domestic waste service or the shop from where you purchased the product.

Other symbols/decals on the machine refer to special certification requirements for certain markets.

Explanation of warning levels

The warnings are graded in three levels.

WARNING!



WARNING! Used if there is a risk of serious injury or death for the operator or damage to the surroundings if the instructions in the manual are not followed.

CAUTION!



CAUTION! Used if there is a risk of injury to the operator or damage to the surroundings if the instructions in the manual are not followed.

NOTICE!

NOTICE! Used if there is a risk of damage to materials or the machine if the instructions in the manual are not followed.

CONTENTS

Contents

KEY TO SYMBOLS	
Symbols on the machine	2
Explanation of warning levels	2
CONTENTS	
Contents	3
Note the following before starting:	3
PRESENTATION	
Dear customer!	4
Design and features	4
PP490	4
WHAT IS WHAT?	
What is what on the power pack?	5
MACHINE'S SAFETY EQUIPMENT	
General	6
ASSEMBLING AND ADJUSTMENTS	
Install the power unit	7
Connecting the units	7
Connect the cooling water	7
Connect a power source	8
Battery	8
Pair the remote control with the power unit	9
OPERATING	
General safety precautions	10
Protective equipment	11
Power pack safety precautions	11
Work safety	12
MENU SYSTEM	
Remote control	13
Remote control menu system	13
Menu overview	13
Menu system explanation	14
Basic working techniques	15
Transport and storage	15
STARTING AND STOPPING	
Before starting	16
Starting	16
Stopping	17
MAINTENANCE	
General	18
Daily Maintenance	18
Service	18
Trouble shooting	19
TECHNICAL DATA	
PP490	22
US WARRANTY STATEMENT	
WARRANTY POLICY	23
EQUIPMENT	23

Note the following before starting:



WARNING! Cutting, especially when DRY cutting, generates dust that comes from the material being cut, which frequently contains silica. Silica is a basic component of sand, quartz, brick clay, granite and numerous other minerals and rocks. Exposure to excessive amount of such dust can cause:

Respiratory disease (affecting your ability to breath), including chronic bronchitis, silicosis and pulmonary fibrosis from exposure to silica. These diseases may be fatal;

Skin irritation and rash.

Cancer according to NTP* and IARC* */ National Toxicology Program, International Agency for Research on Cancer

Take precautionary steps:

Avoid inhalation of and skin contact with dust, mist and fumes.

Wear and ensure that all bystanders wear appropriate respiratory protection such as dust masks designed to filter out microscopic particles. (See OSHA 29 CFR Part 1910.1200)

Wet cut when feasible, to minimize dust.

PRESENTATION

Dear customer!

Thank you for choosing a Husqvarna product!

It is our wish that you will be satisfied with your product and that it will be your companion for a long time. A purchase of one of our products gives you access to professional help with repairs and services. If the retailer who sells your machine is not one of our authorised dealers, ask him for the address of your nearest service workshop.

This operator's manual is a valuable document. Make sure it is always at hand at the work place. By following its content (operating, service, maintenance etc.) the life span and the second-hand value of the machine can be extended. If you ever lend or sell this machine, make sure that the borrower or buyer gets the operator's manual, so they will also know how to properly maintain and use it.

More than 300 years of innovation

Husqvarna AB is a Swedish company based on a tradition that dates back to 1689, when the Swedish King Karl XI ordered the construction of a factory for production of muskets. At that time, the foundation was already laid for the engineering skills behind the development of some of the world's leading products in areas such as hunting weapons, bicycles, motorcycles, domestic appliances, sewing machines and outdoor products.

Husqvarna is the global leader in outdoor power products for forestry, park maintenance and lawn and garden care, as well as cutting equipment and diamond tools for the construction and stone industries.

Owner responsibility

It is the owner's/employer's responsibility that the operator has sufficient knowledge about how to use the machine safely. Supervisors and operators must have read and understood the Operator's Manual. They must be aware of:

- The machine's safety instructions.
- The machine's range of applications and limitations.
- How the machine is to be used and maintained.

Local regulations could restrict the use of this machine. Find out what regulations are applicable where you work before you start using the machine.

The manufacturer's reservation

Subsequent to publishing this manual Husqvarna may issue additional information for safe operation of this product. It is the owner's obligation to keep up with the safest methods of operation.

Husqvarna AB has a policy of continuous product development and therefore reserves the right to modify the design and appearance of products without prior notice.

For customer information and assistance, contact us at our website: www.husqvarna.com

Design and features

This is a product included in a range of high frequency powered equipment for cutting, drilling and wall sawing. They are designed to cut hard materials like masonry and reinforced concrete and should not be used for any purpose not described in this manual.

To operate this machine a Husqvarna high frequency power pack (PP) is also required.

Values such as high performance, reliability, innovative technology, advanced technical solutions and environmental considerations distinguish Husqvarna's products. Safe operation of this product requires the operator to read this manual carefully. Ask your dealer or Husqvarna should you need more information.

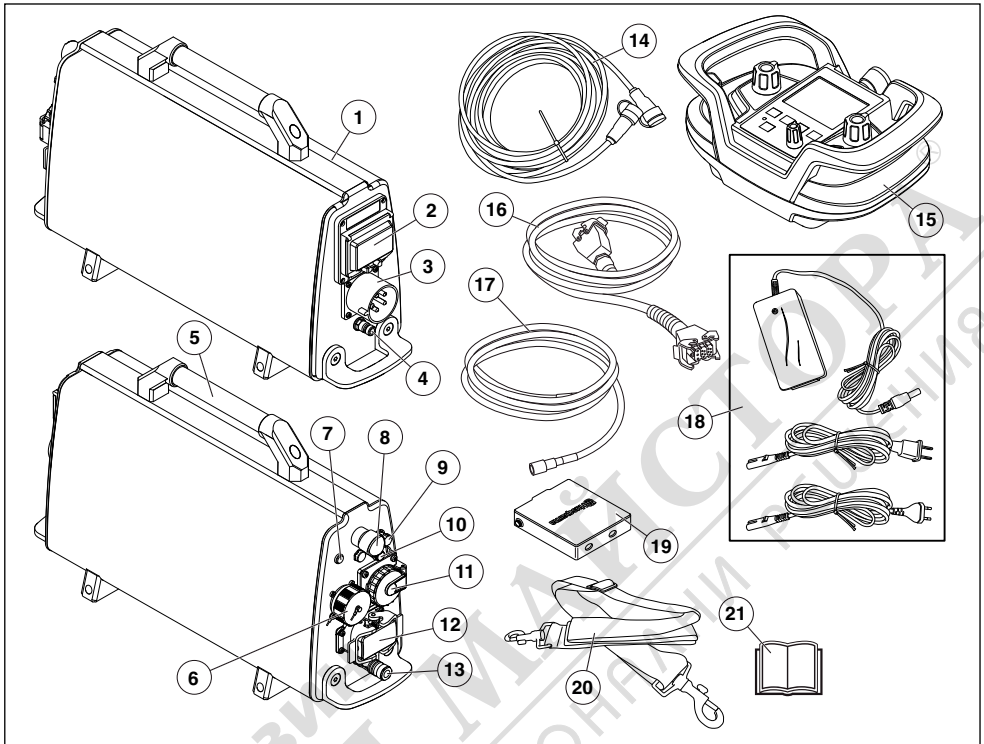
Some of the unique features of your product are described below.

PP490

The power unit is especially designed to drive designated Husqvarna tools with a high frequency motor.

- The unit has two power outlets and can be used with both wallsaws and handheld PRIME™ products.
- A wireless remote control is used to control the connected units.
- The remote control gives the operator freedom of movement and an uninterrupted view of the work. It is easy to control, even when wearing gloves. Setting changes and operation are performed using just a few buttons. The remote control has a 3.5 inch digital color display.
- The design is lightweight, compact and ergonomic which makes the unit easy to transport.
- The unit is water cooled and equipped with an electric water valve which is controlled from the remote control.
- Use 32 A for a 400 V system for full power.

WHAT IS WHAT?



What is what on the power pack?

- | | |
|---|----------------------------|
| 1 Power pack | 12 WS connector (wall saw) |
| 2 Ground fault circuit interrupter | 13 Water connector, out |
| 3 Electrical socket | 14 CAN cable |
| 4 Water connector, in | 15 Remote control |
| 5 Handle | 16 Power cable |
| 6 PRIME™ connector | 17 Water hose |
| 7 Power indicator | 18 Battery charger |
| 8 Emergency stop | 19 Battery (2) |
| 9 CAN port | 20 Adjustable carry strap |
| 10 Automatic fuse, 16A (Only on 5-pin machines) | 21 Operator's manual |
| 11 Single phase socket - Only 5-pin machines | |

MACHINE'S SAFETY EQUIPMENT

General



WARNING! Never use a machine that has faulty safety equipment! If your machine fails any checks contact your service agent to get it repaired.

This section describes the machine's safety equipment, its purpose, and how checks and maintenance should be carried out to ensure that it operates correctly.

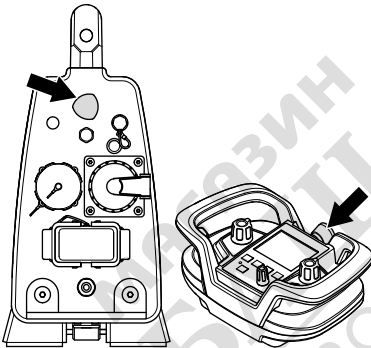
This machine is used in combination with other products. Please read the manual provided with the products carefully and make sure you understand the instructions before using the machine.

Check safety equipment daily.

Also check the safety equipment on the power tool that is to be connected to the power unit, see the operator's manual for the respective power tool to check the safety equipment.

Emergency stop and stop button

The emergency stops on the unit and on the remote control slow the connected tool and disconnect it from the power supply.



Testing the emergency stop

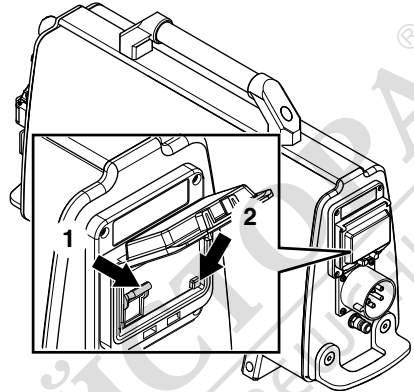
- Check that the emergency stop button is not pressed by turning it clockwise.
- Start the connected tool.
- Press the emergency stop and check that the connected tool stops. Make sure that the power indicator on the power pack goes out a few seconds after the connected tool has stopped.
- When using the wall saw, the stop button should be controlled in the same way.

Ground fault circuit interrupter (RCD)

The power pack is fitted with a residual-current device. A residual-current device is fitted to protect operators in case an electrical fault should occur.

Check the ground fault circuit interrupter

- Connect the power unit to a grounded 3-phase outlet.
- Open the cover on the residual-current device to access the switch (1) and test button (2).



- Set the control in the residual-current device in position 1.
- Press the test button. The residual-current device must trigger to disconnect the unit from the power supply.
- Reset the residual-current device by first setting the switch to 0 and then to 1.
- Refit and tighten the cover.

The residual-current device must be tested every two weeks with the test button.

ASSEMBLING AND ADJUSTMENTS

Install the power unit



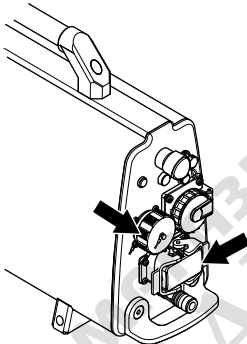
WARNING! Place the power unit on the workplace, making sure that it is standing on a stable surface and that it is protected from water spray.

Connect the power unit to a grounded 3-phase outlet.

Always connect the machine through an ground fault circuit interrupter with personal protection, i.e. an ground fault circuit interrupter that trips at an ground fault of 30 mA.

Connecting the units

Connect the power tool to the designated power take-off, note that there are two different power take-offs. The upper power take-off is used for the PRIME™ family products. The bottom power take-off is used for wall saws (WS). For more information, see the "Technical data" section.



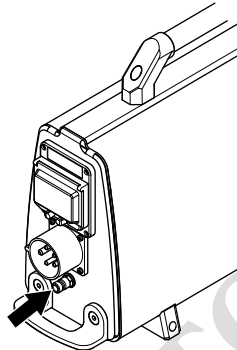
Connect the cooling water

NOTICE! The cooling water will not turn off during a power failure.

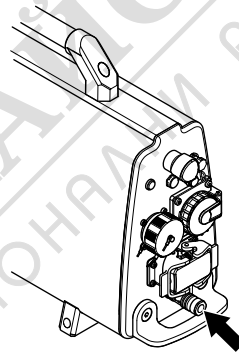
- Connect the water hose to the incoming water connector. Remember to use clean cooling water to avoid dirt clogging up the water system.

The power pack is equipped with an electric water valve, which is closed when the power pack is activated. When the power pack is without electricity, the valve is open to be able to drain water coolant if there is a risk of freezing.

For more information, see the "Technical data" section.



The other water connection should be connected to the power tool, the power tool has various regulating taps for regulating the flow of cooling water to the tool. See the operator's manual for the respective power tools.

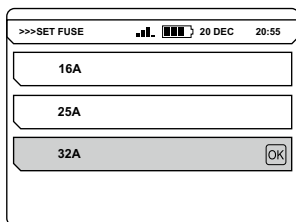


ASSEMBLING AND ADJUSTMENTS

Connect a power source

- Connect the incoming power cable (380-480 V, 32 A). Power packs equipped with a single phase socket (230 V) must also have a neutral wire in order for the socket to work. The power pack functions even if there is no neutral wire present.

To be able to use full power output, the power unit must be connected to a 32 A fuse. With a 16 A or 25 A fuse the power output is lower so as not to overload the fuse. This is selected in the menu under drive selection.



At lower voltage there is a linear reduction in available output down to 80%.

For more information, see the "Technical data" section.

- During operation, fit together the covers for the cable and the power unit to avoid dirt entering the covers which could damage the connector.

A gasoline or diesel driven generator can be used as a power source if sufficiently powerful. See typical generator operation cases in Technical Data. The generator must be grounded to safeguard the function of the power unit.

NOTICE! A generator which on some occasion generates an input voltage outside the voltage range specified in the technical data can damage the power unit.

Battery

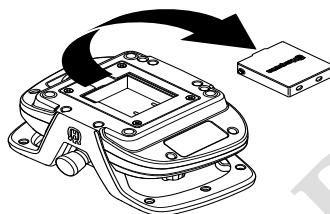
The remote control battery is a Li-ion type. Operating time is about 8-10 hours per charge. Extreme cold impairs the battery's capacity and operating time. Operating time is also affected by the extent to which the display has been active.

Use only original batteries for this product. Contact your dealer for more information.

An exhausted battery must not be disposed of as household garbage! Leave it at your nearest service agent or collection point.

Insert / remove battery

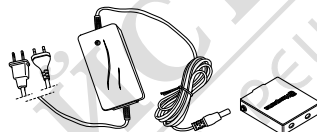
- Insert / remove the battery.



Charge the battery.

Before using the remote control for the first time the battery has to be charged.

To charge with the battery charger



Charging time for a flat battery is approx. 2-3 hours. The diode is orange when charging starts and becomes green when the battery is fully charged. When the battery is fully charged the charger supplies the battery with maintenance current until the battery is removed from the charger.

Keep the battery charger dry and protected against temperature fluctuations.

To charge with the CAN cable

The charging efficiency with the CAN cable is less than with the battery charger and it therefore takes a bit longer to charge the battery.

If the battery is removed while the remote control is connected to the CAN cable, the battery symbol in the remote control will be stricken through to indicate that there is not battery available.

ASSEMBLING AND ADJUSTMENTS

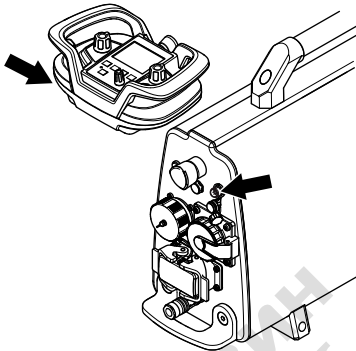
Pair the remote control with the power unit

For radio communication between the remote control and the power unit to work, the relevant remote control must be paired with the relevant power unit.

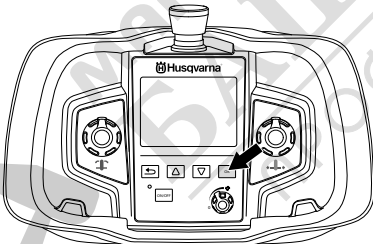
This is a safety measure to guarantee that the power unit can only be controlled by one remote control. Radio communication does not work until this measure has been carried out.

If the accompanying remote control is exchanged or if it is necessary to swap remote controls between two units, the remote control must be rematched with the unit.

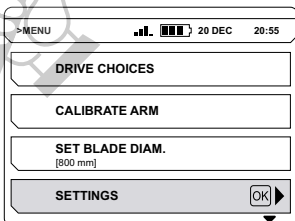
- Connect the remote control using the supplied CAN-cable. Tighten the cable connector screws by hand.



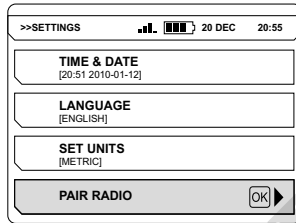
- Allow the remote control to fully charge and await the home screen. Press the "OK" button to access the menu.



- Go to "SETTINGS". Browse with the arrow keys and confirm with "OK".



- Go to "PAIR RADIO". Browse with the arrow keys and confirm with "OK".



A message is displayed on the screen to indicate if the pairing was successful or not.

Other software settings

A number of further settings should be made before the power unit is commissioned. See instructions in the "Menu system" section for additional information.

- Set time and date. (SETTINGS>TIME & DATE)
- Select the required display language. (SETTINGS>LANGUAGE)
- Select the required units. (SETTINGS>SET UNITS)

OPERATING

General safety precautions



WARNING! Read all safety warnings and all instructions. Failure to follow the warnings and instructions may result in electric shock, fire and/or serious injury.

IMPORTANT! Save all warnings and instructions for future reference. The term "power tool" in the warnings refers to your mains-operated (corded) power tool or battery-operated (cordless) power tool.

Work area safety

- **Keep work area clean and well lit.** Cluttered or dark areas invite accidents.
- **Do not operate power tools in explosive atmospheres, such as in the presence of flammable liquids, gases or dust.** Power tools create sparks which may ignite the dust or fumes.
- **Keep children and bystanders away while operating a power tool.** Distractions can cause you to lose control.

Electrical safety

- **Power tool plugs must match the outlet. Never modify the plug in any way.** Unmodified plugs and matching outlets will reduce the risk of electric shock.
- **Avoid body contact with earthed or grounded surfaces, such as pipes, radiators, ranges and refrigerators.** There is an increased risk of electric shock if your body is earthed or grounded.
- **Do not expose power tools to rain or wet conditions.** Water entering a power tool will increase the risk of electric shock.
- **Do not misuse the cable. Do not use the cable to carry or pull the power tool, or to disconnect the power tool from the power take-off. Keep the cable away from heat, oil, sharp edges and moving parts.** Damaged or tangled cables increase the risk of electric shock and must therefore be replaced at a service workshop.
- **When operating a power tool outdoors, use an extension cord suitable for outdoor use.** Use of a cord suitable for outdoor use reduces the risk of electric shock.

Personal safety

- **Stay alert, watch what you are doing and use common sense when operating a power tool. Do not use a power tool while you are tired or under the influence of drugs, alcohol or medication.** A moment of inattention while operating power tools may result in serious personal injury.
- **Use personal protective equipment. Always wear eye protection.** Protective equipment such as dust mask, non-skid safety shoes, hard hat, or hearing protection used for appropriate conditions will reduce personal injuries.
- **Remove any adjusting key or wrench before turning the power tool on.** A wrench or a key left attached to a rotating part of the power tool may result in personal injury.

- **Do not overreach. Keep proper footing and balance at all times.** This enables better control of the power tool in unexpected situations.
- **Dress properly. Do not wear loose clothing or jewellery. Keep your hair, clothing and gloves away from moving parts.** Loose clothes, jewellery or long hair can be caught in moving parts.
- **If devices are provided for the connection of dust extraction and collection facilities, ensure that these are connected and properly used.** Use of dust collection can reduce dust-related hazards.

Power tool use and care

- **Do not force the power tool. Use the correct power tool for your application.** The correct power tool will do the job better and safer at the rate for which it was designed.
- **Do not use the power tool if the designated on/off function for each power tool does not turn it on and off.** Any power tool that cannot be controlled correctly is dangerous and must be repaired.
- **Disconnect the plug from the power source and/or the battery pack from the power tool before making any adjustments, changing accessories, or storing power tools.** Such preventive safety measures reduce the risk of starting the power tool accidentally.
- **Store idle power tools out of the reach of children and do not allow persons unfamiliar with the power tool or these instructions to operate the power tool.** Power tools are dangerous in the hands of untrained users.
- **Maintain power tools. Check for misalignment or binding of moving parts, breakage of parts and any other condition that may affect the power tool's operation. If damaged, have the power tool repaired before use.** Many accidents are caused by poorly maintained power tools.
- **Keep cutting tools sharp and clean.** Properly maintained cutting tools with sharp cutting edges are less likely to bind and are easier to control.
- **Use the power tool, accessories and tool bits etc. in accordance with these instructions, taking into account the working conditions and the work to be performed.** Use of the power tool for operations different from those intended could result in hazardous situations.

Service

- **Have your power tool serviced by a qualified repair person using only identical replacement parts.** This will ensure that the safety of the power tool is maintained.

Always use common sense

It is not possible to cover every conceivable situation you can face. Always exercise care and use your common sense. If you get into a situation where you feel unsafe, stop and seek expert advice. Contact your dealer, service agent or an experienced user. Do not attempt any task that you feel unsure of!

OPERATING

Protective equipment

General

Do not use the machine unless you are able to call for help in the event of an accident.

Personal protective equipment

You must use approved personal protective equipment whenever you use the machine. Personal protective equipment cannot eliminate the risk of injury but it will reduce the degree of injury if an accident does happen. Ask your dealer for help in choosing the right equipment.



WARNING! The use of products such as cutters, grinders, drills, that sand or form material can generate dust and vapors which may contain hazardous chemicals. Check the nature of the material you intend to process and use an appropriate breathing mask.



WARNING! Long-term exposure to noise can result in permanent hearing impairment. So always use approved hearing protection. Listen out for warning signals or shouts when you are wearing hearing protection. Always remove your hearing protection as soon as the engine stops.



WARNING! There is always a risk of crush injuries when working with products containing moving parts. Wear protective gloves to avoid body injuries.

Always wear:

- Protective helmet
- Hearing protection
- Protective goggles or a visor
- Breathing mask
- Heavy-duty, firm grip gloves.
- Tight-fitting, heavy-duty and comfortable clothing that permits full freedom of movement.
- Boots with steel toe-caps and non-slip sole

Be careful as clothing, long hair, and jewellery can get caught in moving parts.

Other protective equipment



WARNING! Sparks may appear and start a fire when you work with the machine. Always keep fire fighting equipment handy.

- Fire fighting equipment
- Always have a first aid kit nearby.

Power pack safety precautions



WARNING! Read all safety warnings and all instructions. Failure to follow the warnings and instructions may result in electric shock, fire and/or serious injury.

This section describes basic safety directions for using the machine. This information is never a substitute for professional skills and experience.

- Please read the operator's manual carefully and make sure you understand the instructions before using the machine.
- Keep in mind that the operator is responsible for accidents or hazards occurring to other people or their property.
- All operators shall be trained in the use of the machine. The owner is responsible for ensuring that the operators receive training.
- The machine must be kept clean. Signs and stickers must be fully legible.



WARNING! The machine can be a dangerous tool if used incorrectly or carelessly, which can cause serious or fatal injury to the operator or others.

Never allow children or other persons not trained in the use of the machine to use or service it. Never allow anyone else to use the machine without first ensuring that they have read and understood the contents of the operator's manual.

Never use the machine if you are fatigued, while under the influence of alcohol or drugs, medication or anything that could affect your vision, alertness, coordination or judgement.



WARNING! Unauthorized modifications and/or accessories may lead to serious injury or death to the user or others.

Do not modify this product or use it if it appears to have been modified by others.

Never use a machine that is faulty. Carry out the safety checks, maintenance and service instructions described in this manual. Some maintenance and service measures must be carried out by trained and qualified specialists. See instructions under the heading Maintenance.

Always use genuine accessories.

OPERATING

Work safety

Work area safety

- Always check and mark out where gas pipes are routed. Cutting close to gas pipes always entails danger. Make sure that sparks are not caused when cutting in view of the risk of explosion. Remain concentrated and focused on the task. Carelessness can result in serious personal injury or death.
- Make sure that no pipes or electrical wires are routed in the work piece or in the working area.
- Make sure that electrical cables within the working area are not live.
- Never start to work with the machine before the working area is clear and you have a firm foothold.
- Do not use the machine in bad weather, such as dense fog, heavy rain, strong wind, intense cold, etc. Working in bad weather is tiring and can lead to dangerous conditions, e.g. slippery surfaces.
- Keep water clear of electrical parts of the tool and away from persons in the working area.

Electrical safety



WARNING! There is always a risk of shocks from electrically powered machines. Avoid unfavourable weather conditions and body contact with lightning conductors and metal objects. Always follow the instructions in the Operator's manual to avoid damage.



WARNING! Do not wash the machine with water, as water can enter the electrical system or the engine and cause damage to the machine or short circuit.

- Never use the tool without the ground fault circuit interrupter delivered with the tool.
- The machine should be connected to an earthed outlet socket.
- Check that the mains voltage corresponds with that stated on the rating plate on the machine.
- Check that the cord and extension cord are intact and in good condition.
- Never use the machine if any cable or plug is damaged, but hand it in to an authorized service workshop for repair.
- To avoid overheating do not use the extension cord while it is rolled up.

Personal safety

- Never leave the machine unsupervised with the motor running.
- Always unplug the power supply to the power pack for longer work breaks.
- Never work alone, always ensure there is another person close at hand. Apart from being able to receive help to assemble the machine, you can also get help if an accident should occur.
- People and animals can distract you causing you to lose control of the machine. For this reason, always remain concentrated and focused on the task.
- People that need to be in close proximity of the machine must wear hearing protection as the sound level when cutting exceeds 85 dB(A).
- Always work in a manner that permits easy access to the emergency stop. If an emergency situation should arise anyway, push the red emergency stop button on the power pack or the stop button on the remote control.

Use and care

This machine is only intended for use together with the intended Husqvarna products. All other use is forbidden.

- The machine is intended for use in industrial applications by experienced operators.
- Inspection and/or maintenance should be carried out with the motor switched off and the plug disconnected.
- Place the power unit on the workplace, making sure that it is standing on a stable surface and that it is protected from water spray. Always disconnect the plug for the power unit before moving it.
- Observe care when lifting. You are handling heavy parts, which imply the risk of pinch injuries or other injuries.
- Never pull out the power cable without first switching off the motor and waiting for the motor to come to a complete halt.
- Check that all couplings, connections and cables are intact and free from dirt.
- Read through the manual supplied with the tool being connected before starting to use the machine.

MENU SYSTEM

Remote control

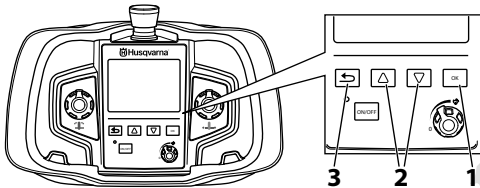
General

The first time the remote control is to be used together with the power unit, the remote control has to be paired with the power unit in order for the radio communication to work. This may already have been done if the power unit was purchased together with the wall saw equipment. If pairing has not been performed, the remote control will not be able to connect to the power unit via radio communication and the display will show that it is looking for units and will try to connect, however without success. First check, however, that the power unit is active with the power cable connected and that the emergency stop has not been pressed down, when carrying out a check to see if pairing has been performed.

Follow the instructions under section "Assembling and adjustments" for instructions on how to pair the remote control with the power unit.

Remote control menu system

Use the arrow keys (2) to scroll in the menus and the "OK" button (1) to confirm the selection. Use the "back" button (3) to go back in the menu.

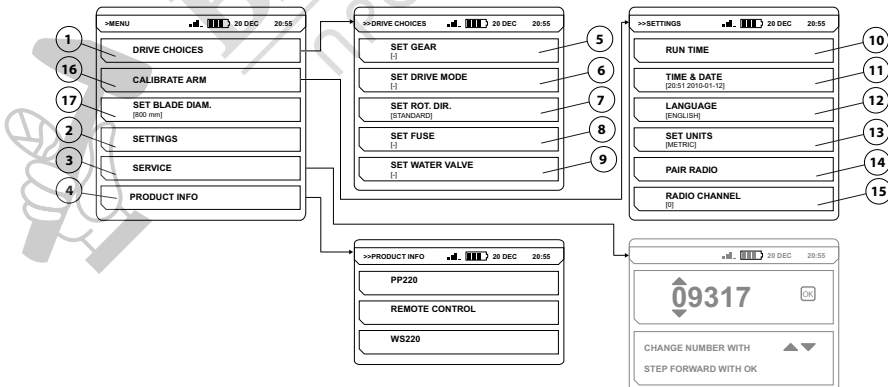


The menu system for the remote control can be accessed by pressing the "OK" button. The menu system comprises the following submenus:

- DRIVE CHOICES
- CALIBRATE ARM
- SET BLADE DIAMETER
- SETTINGS
- SERVICE
- PRODUCT INFO.

The service menu is password protected. Service personnel only have access to the settings in this menu to perform servicing.

Menu overview



See following page for an explanation of each menu.

MENU SYSTEM

Menu system explanation

DRIVE CHOICES (1)

SET GEAR (5)

WS 482 HF is fitted with two mechanical gears. State which gear is set.

- Select gear. (WS 482 HF)
 - 1. (600-900 rpm)
 - 2. (800-1200 rpm)

SET DRIVE MODE (6)

Set the required drive mode depending on if the power unit will be used for wall sawing or wire cutting.

- Select drive mode. (WS 482 HF)
 - BLADE (wall sawing)
 - WIRE (wire cutting)

SET ROT. DIR. (7)

The direction of rotation can only be altered when the blade/wire is not moving.

- Select the required direction of rotation.
 - STANDARD
 - REVERSE

SET FUSE (8)

To be able to use full power output, the power unit must be connected to a 32 A fuse. With a 16 A or 25 A fuse the power output is lower so as not to overload the fuse.

- State which fuse the power unit is connected to.
 - 16A
 - 25A
 - 32A

SET WATER VALVE (9)

The water flow is adjusted with the ball valve at the incoming water connector on the power pack.

- Select type of water regulation.
 - "ON" - The water valve is always open.
 - "AUTO" - The water valve opens when the rotation control is turned up from its zero setting. Otherwise the water valve is closed.

SETTINGS (2)

RUN TIME (10)

Settings for run time.

TIME COUNTER

On activation, a stop-watch is started to count the time the blade/wire rotates and at least one feed is active.

CLEAR RUN TIME

Resets the stop watch.

CURRENT RUN TIME

Shows current run time.

TIME AND DATE (11)

Set time and date.

SET TIME

- State the current time.

SET DATE

- State the current date.

TIME FORMAT

Select the required time format.

- 12 h
- 24 h

DATE FORMAT

- Select the required date format.
 - YYYY-MM-DD
 - YYYY/DD/MM
 - DD/MM/YYYY

LANGUAGE (12)

Setting of language on the display in the remote control.

- Select the required display language.

SET UNITS (13)

Setting of units in the remote control.

- Select the required units.
 - AMERICAN
 - METRIC

PAIR RADIO (14)

Pair the remote control with machine.

Pair the remote control with machine.

RADIO CHANNEL (15)

Setting the radio channel between remote control and the power pack. The radio channel must be changed when the operator experiences disturbance or loss of communication. The remote control must be connected to machine with a CAN cable.

- Select the required radio channel.
 - 0 (2.410 GHz)
 - 1 (2.415 GHz)
 - ...
 - 11 (2.465 GHz)

MENU SYSTEM

SERVICE (3)

PRODUCT INFO (4)

Information about the unit and the connected tool is shown.

CALIBRATE ARM (16)

The position of the pivot arm is used to calculate the current depth of the blade. This menu item is used to calibrate this position.

SET BLADE DIAMETER (17)

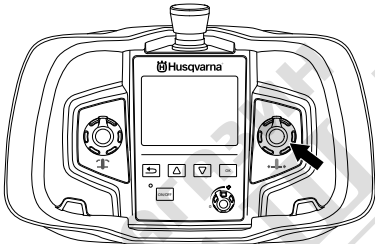
The blade diameter setting is used in the calculation of the current depth of the blade.

Basic working techniques

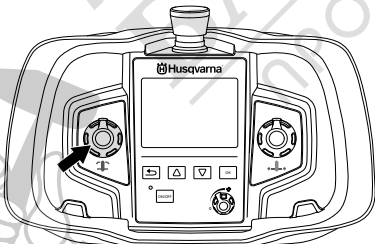
Wall saws (blade/wire/chain)

The following can be operated using the control levers on the remote control:

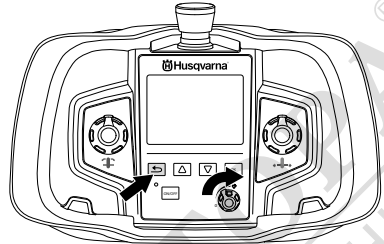
- Longitudinal feed, the dial guides the saw unit's movement along the rail.



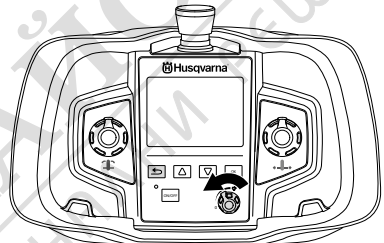
- Arm feeding, the dial guides the pivot arm's movement for changing of the cutting depth.



- Rotation of the blade/wire, controls the blade/wire speed. Back arrow button, is used as a double command when starting the blade's rotation. Start the rotation of the blade/wire by holding the "back" button in while turning the rotation control clockwise. The rotation speed is controlled with a potentiometer.



- To switch off the blade/wire rotation, turn the blade rotation control anti-clockwise back to its zero position.



- Read through the manual supplied with the wall saw for further instructions in sawing technique.

Transport and storage

- Always switch off the power pack and pull out the electric cable before moving the equipment.
- Secure the equipment during transportation in order to avoid transport damage and accidents.
- Store the equipment in a lockable area so that it is out of reach of children and unauthorized persons.
- Store the machine and its equipment in a dry and frost proof place.
- Do not expose the unit to temperatures below -77 °F or over 122 °F or to direct sunlight.

STARTING AND STOPPING

Before starting



WARNING! Please read the operator's manual carefully and make sure you understand the instructions before using the machine.

Wear personal protective equipment. See instructions under the heading "Personal protective equipment".

Make sure no unauthorised persons are in the working area, otherwise there is a risk of serious personal injury.

Check that the machine is assembled correctly and do not show any signs of damage. See instructions in the section "Assembling and adjustments".

Always connect the machine through an ground fault circuit interrupter with personal protection, i.e. an ground fault circuit interrupter that trips at an ground fault of 30 mA.

- Perform daily maintenance. See instructions in the section "Maintenance".
- Connect the power unit to a grounded 3-phase outlet.
- Check that the residual-current device is active.
- Connect the cooling water

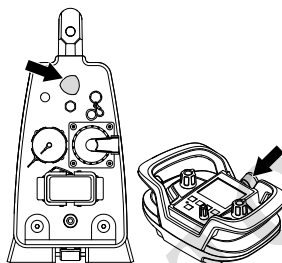
See instructions in the section "Assembling and adjustments".

A gasoline or diesel driven generator can be used as a power source if sufficiently powerful. See typical generator operation cases in Technical Data. The generator must be grounded to safeguard the function of the power unit.

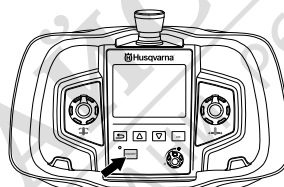
NOTICE! A generator which on some occasion generates an input voltage outside the voltage range specified in the technical data can damage the power unit.

Starting

- Start the water supply to the power unit
- Check that the emergency stop button on the power unit and the stop button on the remote control are not pushed in by turning them clockwise.



- Activate the remote control by pressing the "ON/OFF" button.



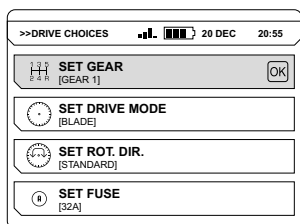
- The connected tool is activated and this is shown by the information shown in the display.

Follow the instructions in the manual supplied with the connected tool.

STARTING AND STOPPING

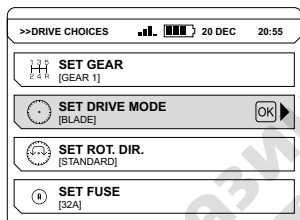
WS 482 HF:

WS 482 HF is fitted with two mechanical gears. State which gear is set. For more information on recommended blades and speeds, see "Recommended blade speeds" in the "Technical data" section.



CAUTION! A higher speed than the recommended speed can result in personal injury and damage to the equipment.

- Set the required drive mode depending on if the power unit will be used for wall sawing, chain sawing or wire cutting. (DRIVE CHOICES>SET DRIVE CHOICES)



It is also possible to choose drive mode from the home screen by using the arrow keys.

Stopping



CAUTION! Always shut off the water supply to the power pack when it is without electricity.

Follow the instructions in the manual supplied with the connected tool.

- Press down the power unit emergency stop.
- Shut off the water supply to the power unit.

MAINTENANCE

General



WARNING! The user must only carry out the maintenance and service work described in this manual. More extensive work must be carried out by an authorized service workshop.

The life span of the machine can be reduced and the risk of accidents can increase if machine maintenance is not carried out correctly and if service and/or repairs are not carried out professionally. If you need further information please contact your nearest servicing dealer.

Daily Maintenance



WARNING! Unplug the power pack and wait at least 5 min before starting the maintenance and services.

- Check that the machine's safety equipment is undamaged. See instructions in the section "Machine's safety equipment".
- Check that the cord and extension cord are intact and in good condition.
- Always clean all the equipment at the end of the working day. Use a heavy-duty hand-held brush or a large paint brush.
- Make sure to keep the connectors and pins clean. Clean with a rag or brush.

NOTICE! Do not use a high pressure washer to clean the machine. The high pressure jet can damage seals and lead to water and dirt permeating into the machine, resulting in serious damage.

Service



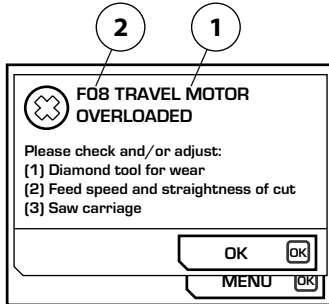
WARNING! All types of repairs may only be carried out by authorised repairmen. This is so that the operators are not exposed to great risks.

Trouble shooting

Error messages - WS (wall saw)

In case of any defects, an error message (1) and a fault code (2) appears on the display in the remote control. Follow the directions supplied or contact an authorized dealer. Error messages are illustrated in the language you have chosen on the product alternatively in English.

Please observe, the illustration shows an example.



Measures for acknowledging fault messages:

- Press "OK" on the display. No further action is required if the fault message is deleted.

If the fault persists, follow the instructions given in the troubleshooting guide or get in touch with an authorized dealer. The power unit software can be updated. Contact your service agent for further information.



MAINTENANCE

Fault Code	Error message	Cause	Steps
F01	MOTOR OVERHEATED	Water coolant lacking/ insufficient to saw motor.	Check that the water coolant flows to the saw motor and that it is max. 25 °C and min 3.5 l/min.
F02	POWER PACK OVERHEATED	Water coolant lacking/ insufficient to power pack.	Check that the water coolant flows to the power pack and that it is max 25°C and min 3.5 l/min. If the message pops up when the blade rotation is started - go to the operations menu and "Water coolant" and select "ON". Let the water coolant circulate the power pack for a minute before you turn the blade rotation on again.
F03	LOW VOLTAGE	Low voltage supply to the power pack.	Check the voltage during operation. Check that all three phases exist. Check that incoming cables have sufficient cross-sectional area.
F04	HIGH VOLTAGE	High voltage supply to the power pack.	Check the voltage during operation. This message is shown mainly when using a generator as power source.
F05	OVER CURRENT	Over current to saw motor	Check that the power lead is fitted correctly and that it is not damaged. The message can appear in case of a loose contact.
F06	NO HALLSENSOR LENGTH	Fault on HALL-sensor card for travel feed	Take the equipment to an authorized service shop.
F07	NO HALLSENSOR ARM	Fault on HALL-sensor card for depth feeding	Take the equipment to an authorized service shop.
F08	TRAVEL MOTOR OVERLOADED	Travel motor overloaded.	Turn the lever to the 0 position to reset. If the fault message recurs, it may be because the diamond tool is not sharp enough or because the saw carriage is not adjusted correctly. Grease also the feeder gears and clean the rails. If these measures do not help, hand in the equipment to an authorized Husqvarna service workshop.
F09	DEPTH MOTOR OVERLOADED	Depth motor overloaded.	Turn the lever to the 0 position to reset. If the fault message recurs, it may be because the diamond tool is not sharp enough or because the saw carriage is not adjusted correctly. Grease also the feeder gears and clean the rails. If these measures do not help, hand in the equipment to an authorized Husqvarna service workshop.
F10	BLADE JAM	Blade can not rotate.	Remove the blade from the cut and start the blade rotation.
F11	GROUND FAULT OR NO SAW HEAD	Incorrect earthing of power pack/saw or no saw unit connected to the power pack.	Check the incoming electrical connection to the power pack and that the saw unit is connected to the power pack. If this does not help, hand in the equipment to an authorized Husqvarna service workshop.
F12	NON-COMPATIBLE SAW UNIT	Incorrect saw unit connected to the power pack.	Connect a compatible saw unit to the power pack.
F13	NO CONTACT CHECK CAN-CABLE	No contact between power pack and remote control	Replace the CAN-cable.
F14	NO RADIO CONTACT	No radio contact between remote control and power pack.	Check that the power pack is activated and that the green indicator light is on. If this does not help, hand in the equipment to a Husqvarna service workshop. The machine can be used with the CAN cable between the power pack and remote control.
F15	NO DSP RESPONSE	Internal error in the power unit.	Take the equipment to an authorized service shop.

MAINTENANCE

Error messages (LED indicator) - PRIME™ tools

In case of any error, the error code will flash on the PRIME™ tool according to the table.

Measures for acknowledging fault messages:

- Activate the trigger on the connected tool. No further action is required if the flashing stops.

If the fault persists, follow the instructions given in the troubleshooting guide or get in touch with an authorized dealer. The power unit software can be updated. Contact your service agent for further information.

- 1 Red
- 2 Yellow
- 3 Green
- 4 Green
- 5 Green

	Solid light
	Flashing light

1								
2								
3								
4								
5								
	F0101	FXX08*	F0112	F0113	FXX14*	F0118	F0119	F0130

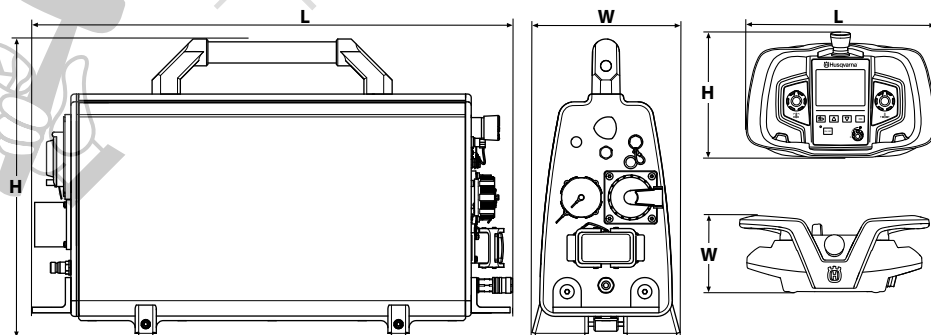
Fault Code	Error messages	Cause	Steps
F0101	Overcurrent detected	Active tool current too high	Contact your service workshop if the problem remains.
FXX08*	High motor temperature detected	Tool motor temperature is too high	Increase the flow of water coolant. Ensure clean water is used so as not to clog up the water channels. See Technical data for specifications for water flow, temperature and pressure.
F0112	Low input voltage detected	Input voltage too low	Check minimum input power in manual
F0113	High input voltage detected	Input voltage too high	Check maximum input power in manual
FXX14*	Tool temperature sensor error detected	Interruption or short circuit in the temperature sensor.	Contact your service agent.
F0118	Fault detected in hardware	Hardware fault	Contact your service workshop if the problem remains.
F0119	Temperature in the PP too high	Power pack overheated	Increase the flow of water coolant. Ensure clean water is used so as not to clog up the water channels. See Technical data for specifications for water flow, temperature and pressure.
F0130	Generic error	Jammed blade	

* XX different numbers depending on the tool that is connected to the power unit.

TECHNICAL DATA

PP490

	PP490
	(380-480V, 4-pin)
Max. output, kW	20
Rated current, A	16/25/32
Input voltage, V	380-480 V, 50-60 Hz
Output voltage, V	340 V, 0-500 Hz
Sec. output voltage, V	24 V, 0-1500 Hz
Power supply	3P+PE
1x230V one phase outlet	-
Recommended cable area	32 A
Length, ft/m	Cable area, AWG/mm ²
0-100/0-30	10/6
100-200/30-60	8/10
200-300/60-100	6/16
Effect generator - min., kVA	
400V, 16A	12
400V, 25A	20
400V, 32A	25
Weight, lb/kg	55/25
Remote control, with battery, without carry strap	2,4/1,1
Max cooling water temperature at, 0.92 Gallon/min, °F / 3,5 l/min, °C	77/25
Max cooling water pressure, bar/psi	7/102
Control system	
Control type	Remote control
Signal transmission	Wireless/cable
Dimensions	
Power pack (LxHxW), inch/mm	26,8x16,6x8,1/680x422x205
Remote control (LxHxW), inch/mm	11,2x7,5x4,9/285x191x124



US WARRANTY STATEMENT

WARRANTY POLICY

All warranty claims will be determined after inspection at a designated facility. A Returned Goods Authorization is required for all warranty claims. Contact Husqvarna Customer Service Department at 800-845-1312 for an RGA. The customer must prepay the freight and absorb any labor expense required to return or replace a product submitted for warranty consideration. Husqvarna will pay return shipping expenses for repaired or approved replacement products.

EQUIPMENT

Equipment manufactured by Husqvarna is warranted to be free from manufacturing defects in normal service for a period of two (2) years from date of purchase by the original consumer purchaser. **Component manufacturers offer separate warranty periods. Call Technical Services at 800-288-5040 for complete information.**

Our obligation under this warranty is expressly limited to the replacement or repair at Husqvarna Construction Products North America, Olathe, Kansas 66061, or at a service facility designated by us, of such part or parts as inspection shall disclose to have been defective.

This warranty does not apply to defects caused by damage, unreasonable use, faulty repairs made by others than an approved Husqvarna servicing dealer, or defects caused by failure to provide reasonable maintenance, while in the possession of the consumer. Further, the warranty is void if the product, or any of its components, are altered or modified by the consumer purchaser, or if the product is used in an inappropriate manner or with tools not recommended by the manufacturer.

Exceptions: Drill motors - 3 months, Wall saws - 1 year, Power cutters - 3 months, DM230 - 1 year, DM225 - 3 months, Gyro systems - 1 year, CD40 system - 1 year, DS160 C - 1 year, Smart box - 1 year, CS2515 - 1 year, PP455 E - 1 year, PP345 E - 1 year, HP40 - 1 year.

Wear items: Filters, spark plugs, bearings*, belts, wheels** and wear pads.

*Except IntelliSeal™ system. **Except delamination.

