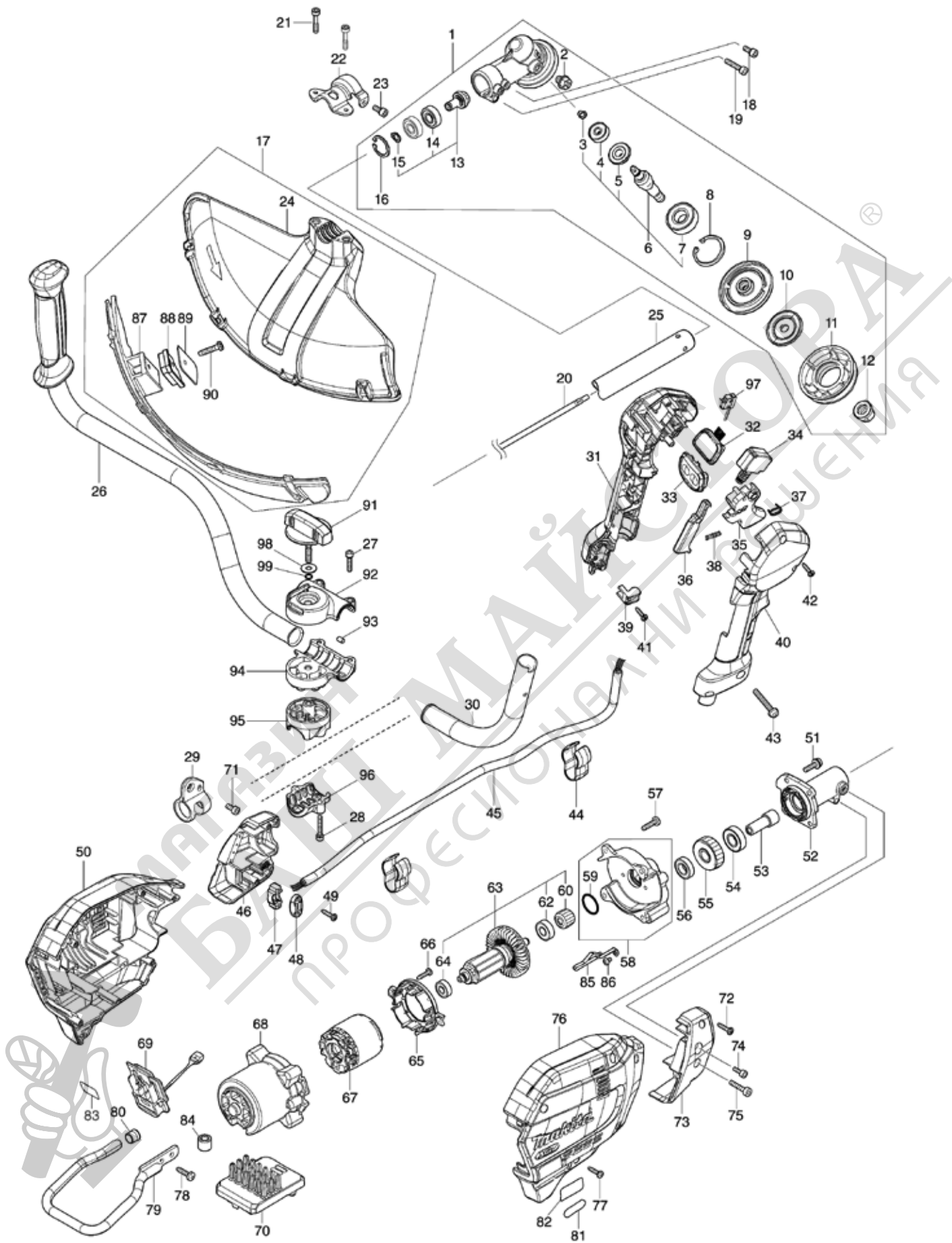


Model No.UR006G CORDLESS GRASS TRIMMER



Model No.UR006G CORDLESS GRASS TRIMMER

Item	Parts No.	Description	I/C	QTY	New/Old	Opt. 1	Opt. 2	NOTE
001	123853-1	GEAR CASE ASSEMBLY		1				
D10		INC. 2,6,8-13,16						
002	265590-2	+HEX.BOLT M8X10 WITH R		1				
003	232350-7	RING SPRING 6		1				
004	210030-5	BALL BEARING 627ZZ		1				
005	221484-1	SPIRAL BEVEL GEAR 19		1				
006	136233-2	CUTTER SHAFT ASS'Y		1				
D10		INC. 3-5,7						
007	211228-7	BALL BEARING 6202DDW		1				
008	257432-4	RETAINING RING R-35		1				
009	144312-2	RECEIVE WASHER COMPLETE		1				
010	347104-0	CLAMP WASHER		1				
011	457274-8	CUP US		1				
012	252236-9	HEX. LOCK NUT M10-17		1				
013	136235-8	SPIRAL BEVEL GEAR ASS'Y		1				
D10		INC. 14,15						
014	210049-4	BALL BEARING 609ZZ		2				
015	257986-1	RETAINING RING (EXT) S-9		1				
016	257987-9	RETAINING RING (INT)R-24		1				
017	191B54-1	PROTECTOR U 430 SET MG		1				
D10		INC. 24,87-90						
018	922216-6	HEX. SOCKET HEAD BOLT M5X14		1				
019	922242-5	HEX. SOCKET HEAD BOLT M5X25		1				
020	327056-1	SHAFT		1				
021	251513-6	H.S.H.BOLT M5X25		2				
022	347107-4	PROTECTOR CLAMP 24		1				
023	922216-6	HEX. SOCKET HEAD BOLT M5X14		1				
024	457271-4	PROTECTOR U 450		1				
025	140S82-5	SHAFT PIPE COMPLETE I		1				
C10	819312-8	MAKITA LOGO LABEL		1				
C20	819J22-7	CAUTION LABEL		1				
026	141D27-6	HANDLE 22L COMPLETE		1				
C10	273014-4	GRIP 36		1				
027	922241-7	HEX. SOCKET HEAD BOLT M5X25		2				
028	922251-4	HEX. SOCKET HEAD BOLT M5X30		2				
029	347116-3	HANGER		1				
030	327837-3	HANDLE 22 R		1				
031	183T68-2	GRIP SET		1				
C10	252180-0	HEX. LOCK NUT M5-8		1				
D10		INC. 40						
032	141D26-8	INDICATION CIRCUIT COMPLETE G		1				
033	140W06-5	SWITCH CIRCUIT COMPLETE G		1				
C10	819J26-9	SWITCH LABEL		1				
034	651492-2	SWITCH C3JR-1A-PAXD3		1				

Please order the parts with part number.

Print Date 7/2/2021

Model No.UR006G CORDLESS GRASS TRIMMER

Item	Parts No.	Description	I/C	QTY	New/Old	Opt. 1	Opt. 2	NOTE
035	459145-5	SWITCH LEVER		1				
036	459146-3	LOCK OFF LEVER		1				
037	233540-5	TORSION SPRING 11		1				
038	233101-1	COMPRESSION SPRING 4		1				
039	687260-7	STRAIN RELIEF		1				
040	183T68-2	GRIP SET		1				
C10	252180-0	HEX. LOCK NUT M5-8		1				
D10		INC. 31						
041	266326-2	TAPPING SCREW 4X18		1				
042	266326-2	TAPPING SCREW 4X18		5				
043	911258-5	PAN HEAD SCREW M5X35		1				
044	457458-8	CLAMP		2				
045	699165-9	POWER SUPPLY CORD UNIT		1				
046	183N25-4	HOUSING COVER SET		1				
D10		INC. 73						
047	687051-6	STRAIN RELIEF		1				
048	687124-5	STRAIN RELIEF		1				
049	266326-2	TAPPING SCREW 4X18		2				
050	183S87-2	HOUSING SET		1				
C10	263005-3	RUBBER PIN 6		2				
D10		INC. 76						
051	911233-1	PAN HEAD SCREW M5X20		4				
052	140Y38-4	PIPE BRACKET COMPLETE		1				
C10	263002-9	RUBBER PIN 4		1				
053	325811-5	SPINDLE HUB		1				
054	211131-2	BALL BEARING 6001DDW		1				
055	227848-7	HELICAL GEAR 33		1				
056	211150-8	BALL BEARING 6901ZZ		1				
057	266420-0	TAPPING SCREW 5X20		4				
058	136368-9	GEAR BOX ASSY		1				
D10		INC. 59						
059	213961-7	O RING 22		1				
060	227834-8	HELICAL GEAR 16		1				
062	210005-4	BALL BEARING 608DDW		1				
063	519647-4	ROTOR ASS'Y		1				
D10		INC. 60,62,64						
064	210062-2	BALL BEARING 607ZZ		1				
065	459764-7	BAFFLE PLATE		1				
066	266326-2	TAPPING SCREW 4X18		2				
067	629A25-7	STATOR		1				
068	412961-6	MOTOR HOUSING		1				
069	632P49-4	TERMINAL UNIT		1				
070	620F30-7	CONTROLLER		1				
071	922212-4	HEX. SOCKET HEAD BOLT M5X12		1				
072	266326-2	TAPPING SCREW 4X18		2				
073	183N25-4	HOUSING COVER SET		1				

Model No.UR006G CORDLESS GRASS TRIMMER

Item	Parts No.	Description	I/C	QTY	New/Old	Opt. 1	Opt. 2	NOTE
D10		INC. 46						
074	922211-6	H.S.H.BOLT M5X12 WITH W		1				
075	922233-6	H.S.H.BOLT M5X20 WITH WR		1				
076	183S87-2	HOUSING SET		1				
C10	263005-3	RUBBER PIN 6		2				
D10		INC. 50						
077	266326-2	TAPPING SCREW 4X18		6				
078	266420-0	TAPPING SCREW 5X20		2				
079	347752-5	BATTERY GUARD		1				
080	422230-7	CAP		1				
081	8025F3-0	XGT LOGO LABEL		1				
082	811X73-0	UR006G NAME PLATE		1				
083	811X79-8	UR006G SERIAL NO. LABEL		1				
084	688163-8	LINE FILTER		1				
085	347751-7	PLATE		1				
086	911102-6	PAN HEAD SCREW M4X6		1				
087	144316-4	PROTECTOR U EXT. 420-450 COMP		1				
C10	346696-6	HOOK		2				
C20	232284-4	LEAF SPRING		2				
088	459765-5	CUTTER EXTENSION		1				
089	347115-5	CUTTER		1				
090	266459-3	TAPPING SCREW 5X25		1				
091	162965-5	KNOB 57		1				
092	141D24-2	UPPER HANDLE HOLDER 22 COMP		1				
C10	263005-3	RUBBER PIN 6		1				
093	263005-3	RUBBER PIN 6		2				
094	312B68-9	LOWER HANDLE HOLDER 22		1				
095	312B65-5	UPPER PIPE HOLDER 24		1				
096	312B66-3	LOWER PIPE HOLDER 24		1				
098	253047-5	FLAT WASHER 6		1				
099	213960-9	O RING 5		1				
A01	122A37-4	BAND ASSEMBLY		1				
A02	191D90-9	TRIMMER HEAD 96-M10L SET		1				
A03	126642-3	PLASTIC BLADE ASSEMBLY255-M10L		1				
A04	144392-8	TOOL COVER 2T		1				
A05	198345-9	CUTTER BLADE 255-2 SET ME		1				
A06	782238-6	BOX WRENCH 17		1				
A07	783202-0	HEX. WRENCH 4		1				
A08	831304-7	ACCESSORY BAG		1				
A09B	412393-7	BATTERY COVER		1				
A10B	***DC40RA	DC40RA FAST CHARGER		1				
D10		COMPO-PARTS						
A11B	191L47-8	BATTERY BL4050F SET		1				
E01	8041C9-9	SOUND LABEL		1				

Please order the parts with part number.

Print Date 7/2/2021