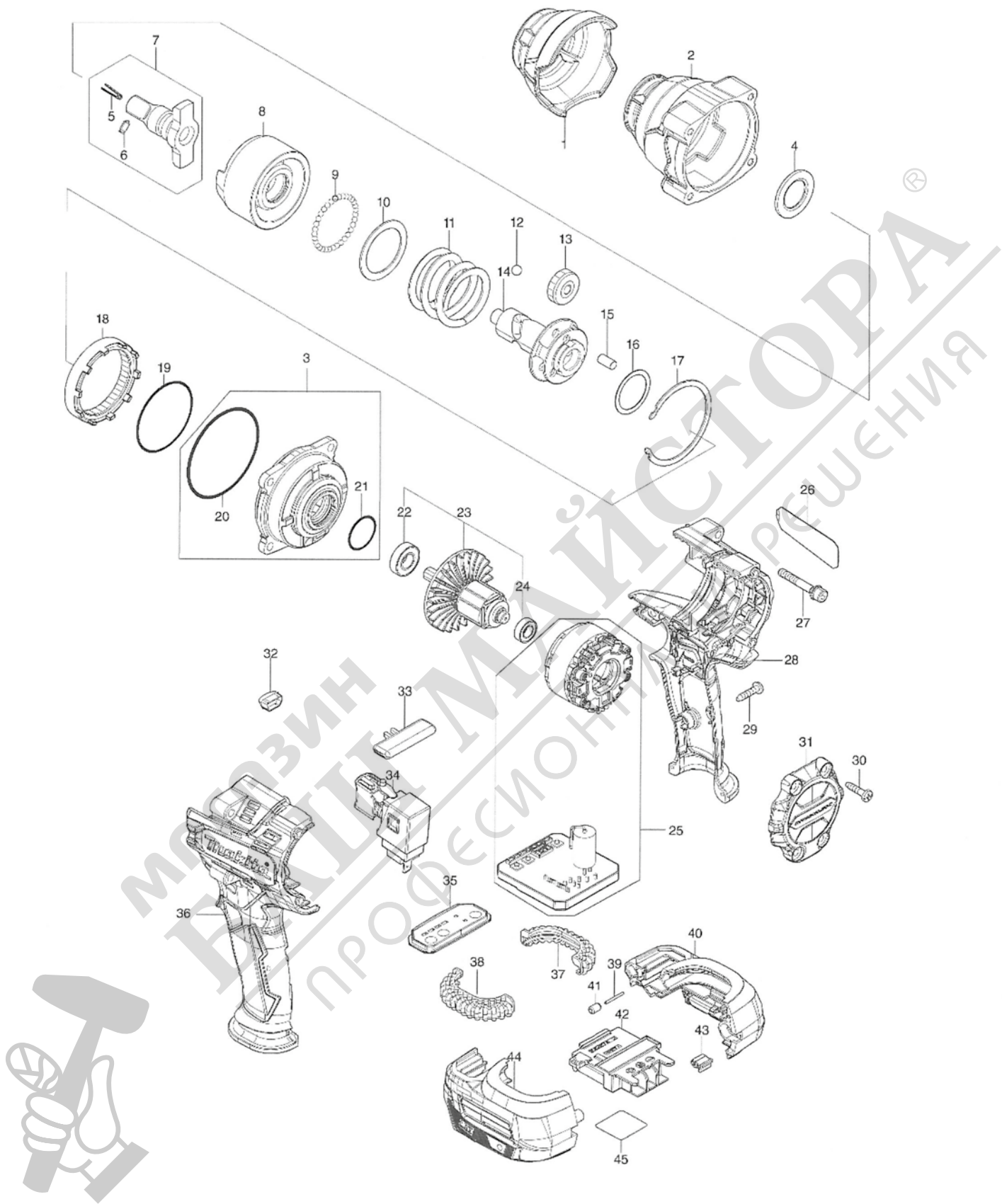
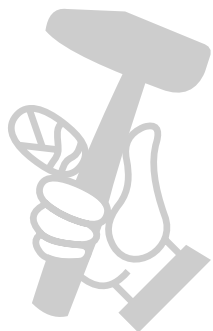


Model No.DTW701 CORDLESS IMPACT WRENCH



POS. NO.	PART NO.	DESCRIPTION	USED QTY	NOTES
001		422607-6 BUMPER	1	
002		140U47-9 HAMMER CASE COMPLETE	1	
003		136296-8 INTERNAL GEAR CASE ASS'Y	1	
003	D10	INC. 20,21		
004		253481-9 FLAT WASHER 20	1	
005		322045-1 CLIP	1	
006		323675-1 PIN 4	1	
007		136263-3 ANVIL AASS'Y	1	
007	D10	INC. 5,6		
008		327624-0 HAMMER	1	
009		216001-0 STEEL BALL 3.5	33	
010		267340-1 FLAT WASHER 32	1	
011		232629-6 COMPRESSION SPRING 34	1	
012		216007-8 STEEL BALL 6.4	2	
013		227813-6 SPUR GEAR 21	3	
014		327623-2 SPINDLE	1	
015		256211-7 PIN 6	3	
016		267494-4 FLAT WASHER 25	1	
017		347722-4 RETAINER	1	
018		227814-4 INTERNAL SPUR GEAR 48	1	
019		213624-5 O RING 48	1	
020		213654-6 O RING 60	1	
021		213961-7 O RING 22	1	
022		210069-8 BALL BEARING 6900DDW	1	
023		519635-1 ROTOR ASS'Y	1	
023	D10	INC. 22,24		
024		211343-7 BALL BEARING 688ZZ	1	
025		629A06-1 STATOR COMPLETE	1	
026		857M22-7 DTW701 NAME PLATE	1	
027		251476-6 H.S.H.BOLT M5X35 WITH WR	4	
028		183P88-2 HOUSING SET	1	
028	D10	INC. 36		
029		266326-2 TAPPING SCREW 4X18	7	
030		266326-2 TAPPING SCREW 4X18	4	
031		412673-1 REAR COVER	1	
032		620549-0 LED CIRCUIT	1	
033		456268-0 F/R CHANGE LEVER	1	
034		140U03-9 SWITCH COMPLETE	1	
034	C10	424774-3 SWITCH COVER	1	
035		140U53-4 SWITCH PLATE COMPLETE	1	
035	C10	8012S9-8 SWITCH LABEL	1	
036		183P88-2 HOUSING SET	1	

036	D10		INC. 28		
037		424773-5	CUSHION RUBBER	1	
038		424773-5	CUSHION RUBBER	1	
039		268284-8	PIN 1.5	1	
040		183P89-0	BATTERY HOUSING SET	1	
040	C10	263005-3	RUBBER PIN 6	2	
040	C20	252126-6	HEX. LOCK NUT M4-7	2	
040	D10		INC. 44		
041		263036-2	RUBBER PIN 5	1	
042		643874-2	TERMINAL	1	
043		424517-3	CUSHION	1	
044		183P89-0	BATTERY HOUSING SET	1	
044	C10	263005-3	RUBBER PIN 6	2	
044	C20	252126-6	HEX. LOCK NUT M4-7	2	
044	D10		INC. 40		
045		857M28-5	DTW701 SERIAL NO. LABEL	1	
A01		251314-2	+ SCREW M4X12	1	
A02		347723-2	HOOK	1	
A03B		***DC18RC	DC18RC FAST CHARGER	1	
A03B	D10		COMPO-PARTS		
A04B		450128-8	BATTERY COVER	1	
A05B		197280-8	BATTERY BL1850B SET	2	
A06B		821551-8	CONNECTOR PLASTIC CASE (TYPE3)	1	
A06B	C10	453974-8	LATCH	4	
A07B		837645-9	INNER TRAY	1	
A08B		8019V1-7	DTW701RTJ PLASTIC CASE LABEL	2	
A09B		8019V0-9	DTW701RTJ INDICATION LABEL	1	



МАГАЗИН
БАШТАЙНСТОРП
ПРОФЕСИОНАЛНИ РЕШЕНИЯ