

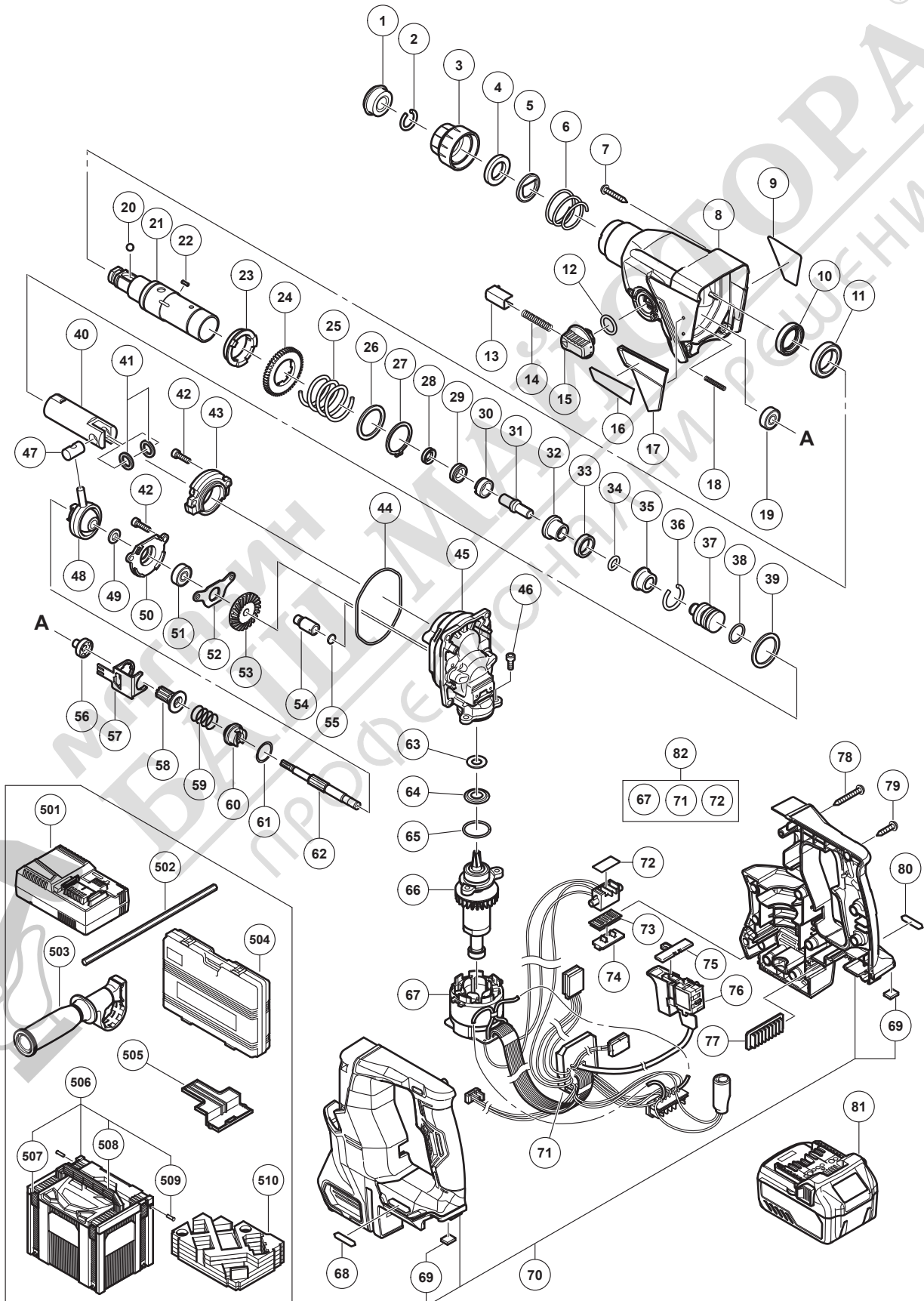
## ELECTRIC TOOL PARTS LIST

### CORDLESS ROTARY HAMMER

2017·12·22

Model DH 36DPA

(E1)



**PARTS**

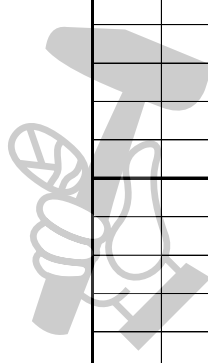
DH 36DPA

ITEM NO.	CODE NO.	DESCRIPTION	NO. USED	REMARKS
1	306345	FRONT CAP	1	
2	306340	STOPPER RING	1	
3	324527	GRIP	1	
4	371326	BALL HOLDER (FW)	1	
5	324526	HOLDER PLATE	1	
6	322812	HOLDER SPRING	1	
7	370307	TAPPING SCREW (W/FLANGE) D5	4	
8	370306	GEAR COVER ASS'Y	1	INCLUD.10,11,19
9		NAME PLATE	1	
10	335259	OIL SEAL	1	
11	335260	BALL BEARING 6805DD	1	
12	878885	O-RING (S-18)	1	
13	322789	PUSHING BUTTON	1	
14	317223	PUSHING SPRING	1	
15	334011	CHANGE LEVER	1	
16		BRAND LABEL	1	
17	370308	BRAND PLATE	1	
18	335800	SPRING (E)	1	
19	608VVM	BALL BEARING 608VVC2PS2L	1	
20	335300	STEEL BALL D7.0 (10 PCS.)	1	
21	335261	CYLINDER	1	
22	335264	PIN D2.5	4	
23	335263	CYLINDER CLUTCH	1	
24	335265	SECOND GEAR	1	
25	335266	SPRING (A)	1	
26	301679	WASHER (A)	1	
27	948310	RETAINING RING FOR D30 SHAFT	1	
28	335262	OIL SEAL (A)	1	
29	335268	HAMMER HOLDER (C)	1	
30	335795	SLEEVE (FW)	1	
31	335269	SECOND HAMMER	1	
32	335267	HAMMER HOLDER (A)	1	
33	322805	DAMPER (A)	1	
34	322808	O-RING (C)	1	
35	324524	DAMPER HOLDER	1	
36	322807	STOPPER RING	1	
37	372815	STRIKER	1	
38	372816	O-RING	1	
39	301679	WASHER (A)	1	
40	372817	PISTON	1	
41	335794	PISTON WASHER	2	
42	990079	SEAL LOCK HEX. SOCKET HD. BOLT M5 X 16	4	
43	370309	INNER COVER (B)	1	
44	370310	O-RING	1	
45	370311	INNER COVER (A)	1	INCLUD.54,55,63-65
46	877839	SEAL LOCK HEX. SOCKET HD. BOLT M5 X 10	2	
47	335793	PISTON PIN	1	
48	335249	RECIPROCATING BEARING	1	
49	335250	BEARING WASHER	1	
50	370312	BEARING HOLDER (B)	1	

**PARTS**

DH 36DPA

ITEM NO.	CODE NO.	DESCRIPTION	NO. USED	REMARKS	
51	608VVM	BALL BEARING 608VVC2PS2L	1		
52	370313	BEARING COVER (A)	1		
53	370314	BEVEL GEAR (A)	1		
54	334008	AIR CAP	1		
55	324543	FELT PACKING (A)	1		
56	335275	PINION SLEEVE	1		
57	335276	LOCK PLATE	1		
58	335278	SECOND PINION	1		
59	323182	CLUTCH SPRING	1		
60	335254	CLUTCH	1		
61	331315	WASHER	1		
62	335277	SECOND SHAFT	1		
63	370315	FELT PACKING	1		
64	370316	PACKING WASHER	1		
65	872470	O-RING (S-26)	1		
66	361072	ROTOR (B)	1		
67	340981	STATOR	1		
68		MV LABEL (A)	1		
69	370321	DAMPER (A)	2		
70	372718	HOUSING (A).(B) SET	1	INCLUD.69	
71	372868	SWITCH CONTROLLER ASS'Y	1	INCLUD.76	
72	370327	RUBBER CUSHION	1		
73	370545	TERMINAL RUBBER BASE	1		
74	371715	TERMINAL COVER	1		
75	324225	PUSHING BUTTON (B)	1		
76	370322	DC-SPEED CONTROL SWITCH	1		
77	370328	BUTTERY RUBBER (B)	1		
78	306664	TAPPING SCREW (W/FLANGE) D4 X 40 (BLACK)	1		
79	301653	TAPPING SCREW (W/FLANGE) D4 X 20 (BLACK)	11		
80		MV LABEL (B)	1		
*	81	371750	BATTERY BSL 36A18 (EUROPE,AUS,NZL)	2	INCLUD.505
*	81	372120	BATTERY BSL 36B18 (EUROPE,AUS,NZL)	2	INCLUD.505
	82	372867	WIRING ASS'Y	1	INCLUD.67,71,72



**STANDARD ACCESSORIES**

DH 36DPA

ITEM NO.	CODE NO.	DESCRIPTION	NO. USED	REMARKS
501		CHARGER (MODEL UC 18YSL3)	1	
502	303709	DEPTH GAUGE	1	
503	335273	SIDE HANDLE	1	
* 504	373134	CASE	1	
* 505	329897	BATTERY COVER	1	
* 506	337528	CASE ASS'Y (STACKABLE 4)	1	INCLUD.507-509
* 507	336472	LATCH	4	
* 508	336473	HANDLE	1	
* 509	336474	HINGE	2	
* 510	373135	BOTTOM CUSHION	1	

**OPTIONAL ACCESSORIES**

ITEM NO.	CODE NO.	DESCRIPTION	NO. USED	REMARKS
601	303332	HAMMER DRILL CHUCK SET 13MM	1	INCLUD.602,603
602	303334	CHUCK HANDLE	1	
603	303335	RUBBER CAP	1	
604	321825	DRILL CHUCK AND ADAPTER SET	1	INCLUD.605,606
605	303623	CHUCK ADAPTER (G) (SDS PLUS)	1	
606	321814	DRILL CHUCK 13VLRB-D	1	INCLUD.607,608
607	331966	FLAT HD. SCREW (LEFT HAND) M6 X 20	1	
608	987576	CHUCK WRENCH FOR 13VLB-D,13VLR-D	1	
609	321813	DRILL CHUCK 13VLD-D	1	INCLUD.602
610	971787	DUST CUP	1	
611	931844	STOPPER	1	
612	971511Z	+ DRIVER BIT (A) NO.2 25L	1	
613	971512Z	+ DRIVER BIT (A) NO.3 25L	1	
617	306885	DUST COLLECTOR (B) ASS'Y	1	INCLUD.618
618	306910	SOCKET ADAPTER (B)	1	
621	335782	GREASE FOR ROTARY HAMMER (60G)	1	
622	335781	GREASE FOR ROTARY HAMMER (500G)	1	
623	402933	DUST EXTRACTOR	1	