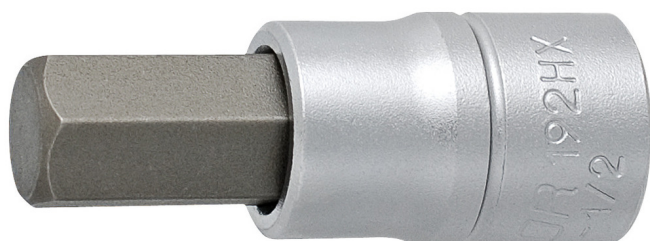


## Вложка 1/2", шестограм (inbus)

192/2HX



### Употреба

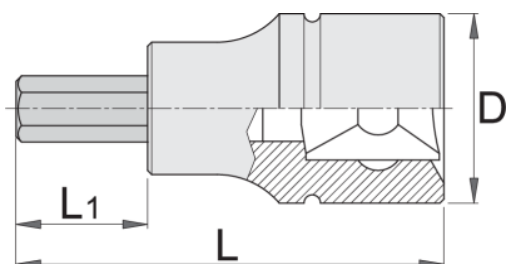


### Профили



### Параметри на продукта

- материал: вложка: хром-ванадиева, хромирана
- накрайник: специална инструментална стомана
- кована, изцяло закалена
- размери 17, 19, 22, 24 се използват за монтаж и демонтаж на предни колела
- изработена в съответствие със стандарт DIN 7422 (само за метрични размери)






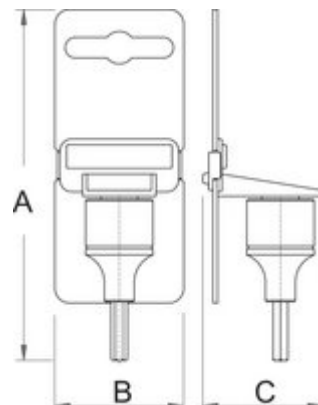
D

L

L1

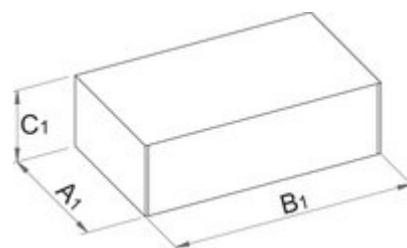


|  |  | D    | L  | L1 |  |
|---|--|------|----|----|--|
| 600978  | 4  | 23   | 60 | 24 | 60   |
| 603420  | 5  | 23   | 60 | 24 | 60   |
| 603421  | 6  | 23   | 60 | 24 | 60   |
| 603422  | 7  | 23   | 60 | 24 | 75   |
| 603423  | 8  | 23   | 60 | 24 | 81   |
| 605923  | 9  | 23   | 60 | 24 | 85   |
| 603424  | 10   | 23   | 60 | 24 | 95   |
| 603425  | 12   | 23   | 60 | 24 | 116  |
| 624033  | 13   | 23   | 60 | 24 | 100  |
| 603426  | 14   | 23   | 60 | 24 | 168  |
| 624034  | 15   | 23   | 60 | 24 | 115  |
| 603427  | 17   | 24   | 60 | 20 | 187  |
| 603428  | 19   | 26.5 | 60 | 20 | 195  |
| 623141  | 22   | 26,5 | 60 | 20 | 196  |
| 623142  | 24   | 26,5 | 60 | 20 | 210  |
| 619894  | 3/16"  | 22.9 | 40 | 24 | 60   |
| 619895  | 7/32"  | 22.9 | 40 | 24 | 60   |
| 619896  | 1/4"   | 22.9 | 40 | 24 | 60   |
| 619899  | 3/8"   | 22.9 | 40 | 24 | 95   |
| 619900  | 1/2"   | 22.9 | 40 | 24 | 116  |
| 619901  | 9/16"  | 22.9 | 40 | 24 | 168  |
| 619902  | 5/8"   | 22.9 | 40 | 24 | 187  |
| 619904  | 3/4"   | 26.8 | 40 | 21 | 195  |






Опаковки на дребно

| Barcode | MA  | MB | MC | Weight |
|---------|-----|----|----|--------|
| 600978  | 130 | 44 | 43 | 65     |
| 603420  | 130 | 44 | 43 | 65     |
| 603421  | 130 | 44 | 43 | 65     |
| 603422  | 130 | 44 | 43 | 80     |
| 603423  | 130 | 44 | 43 | 86     |
| 605923  | 130 | 44 | 43 | 90     |
| 603424  | 130 | 44 | 43 | 100    |
| 603425  | 130 | 44 | 43 | 121    |
| 624033  | 130 | 44 | 43 | 125    |
| 603426  | 130 | 44 | 43 | 173    |
| 624034  | 130 | 44 | 43 | 175    |
| 603427  | 130 | 44 | 43 | 192    |
| 603428  | 130 | 44 | 43 | 200    |
| 623141  | 122 | 44 | 43 | 205    |
| 623142  | 122 | 44 | 43 | 220    |
| 619894  | 130 | 44 | 43 | 65     |
| 619895  | 130 | 44 | 43 | 65     |
| 619896  | 130 | 44 | 43 | 65     |
| 619899  | 130 | 44 | 43 | 100    |
| 619900  | 130 | 44 | 43 | 121    |
| 619901  | 130 | 44 | 43 | 173    |
| 619902  | 130 | 44 | 43 | 192    |
| 619904  | 130 | 44 | 43 | 200    |



## Транспортна опаковка

| Barcode | Quantity | TA | TB  | TC | Weight |
|---------|----------|----|-----|----|--------|
| 600978  | 4        | 94 | 150 | 59 | 385    |
| 603420  | 4        | 94 | 150 | 59 | 385    |

|  |  | TA   | TB   | TC |  |
|--|---|------|------|----|---|
| 603421   | 4   | 94   | 150  | 59 | 385   |
| 603422   | 4   | 94   | 150  | 59 | 445   |
| 603423   | 4   | 94   | 150  | 59 | 469   |
| 605923   | 4   | 94   | 150  | 59 | 485   |
| 603424   | 4   | 94   | 150  | 59 | 525   |
| 603425   | 4   | 94   | 150  | 59 | 609   |
| 624033   | 4   | 49   | 150  | 59 | 545   |
| 603426   | 4   | 94   | 150  | 59 | 817   |
| 624034   | 4   | 49   | 150  | 59 | 800   |
| 603427   | 4   | 94   | 150  | 59 | 893   |
| 603428   | 4   | 94   | 150  | 59 | 925   |
| 623141   | 4   | 94   | 150  | 59 | 865   |
| 623142   | 4   | 10,4 | 16,8 | 61 | 935   |
| 619894   | 4   | 94   | 150  | 59 | 385   |
| 619895   | 4   | 94   | 150  | 59 | 385   |
| 619896   | 4   | 94   | 150  | 59 | 385   |
| 619899   | 4   | 94   | 150  | 59 | 525   |
| 619900   | 4   | 94   | 150  | 59 | 609   |
| 619901   | 4   | 94   | 150  | 59 | 817   |
| 619902   | 4   | 94   | 150  | 59 | 893   |
| 619904   | 4   | 104  | 168  | 61 | 925   |