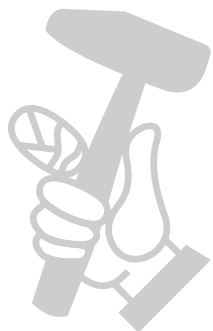




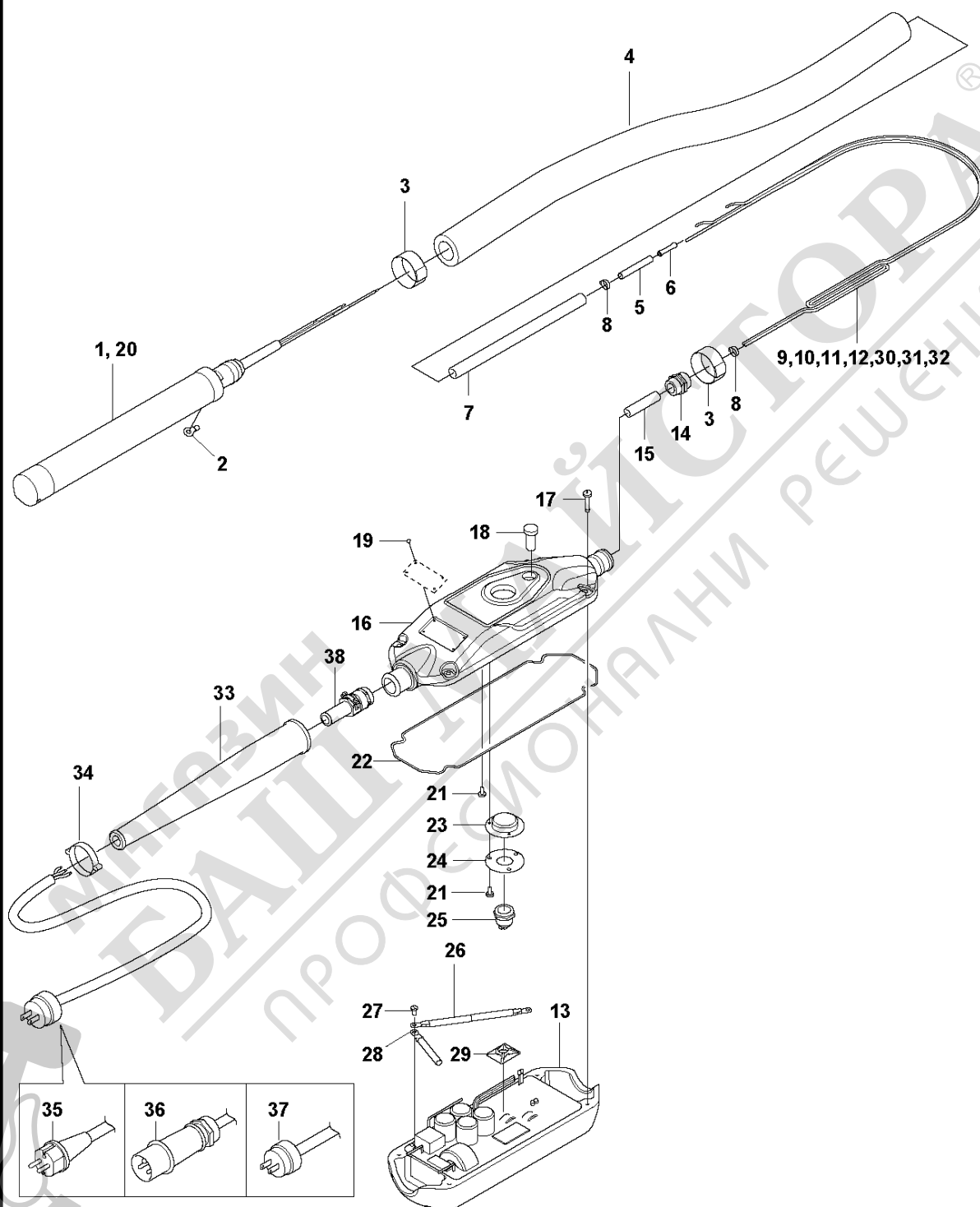
SPARE PARTS LIST

POKERS

SMART 56/SMART 56E, 967856003,
967856004, 967856005, 967940301,
967940303, 2019-08

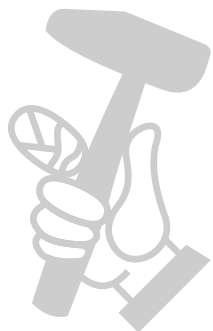


A SMART 56
PRODUCT COMPLETE

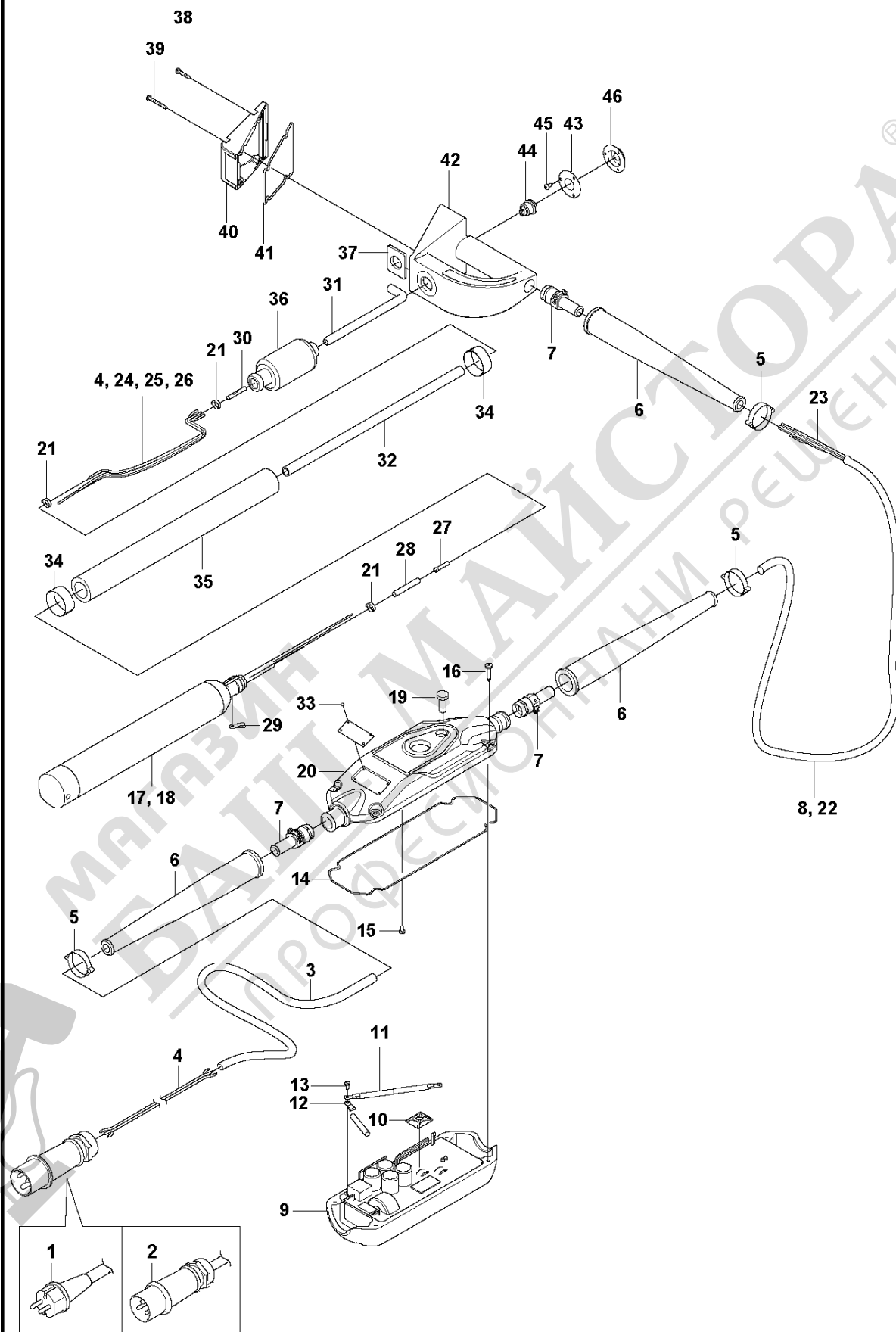


PRODUCT COMPLETE SMART 56/SMART 56E, 967856003, 967856004, 967856005, 967940301, 967940303, 2019-08

| Ref | Part No | Description | Remark | QTY KIT |
|-----|--------------|-------------|---------------------------------|---------|
| 1 | 594 62 71-01 | HEAD | Vibrating head SMART 56 230V | 1 |
| 2 | 594 79 47-01 | CLIP | | 1 |
| 3 | 594 28 17-01 | CLAMP | | 2 |
| 4 | 594 38 84-05 | HOSE | | 1 |
| 5 | 594 25 75-01 | INSULATION | | 3 |
| 6 | 595 11 85-01 | SLEEVE | | 8 |
| 7 | 594 25 49-04 | HOSE | | 1 |
| 8 | 594 28 64-01 | CLAMP | | 7 |
| 9 | 594 28 77-02 | CABLE | White wire | 1 |
| 10 | 598 47 91-02 | WIRE | Red wire | 1 |
| 11 | 594 28 59-03 | WIRE | Blue wire | 1 |
| 12 | 594 52 78-04 | CABLE | Ground wire, yellow/green | 1 |
| 13 | 594 61 98-01 | UNIT | | 1 |
| 14 | 594 40 88-01 | BOX | | 1 |
| 15 | 594 25 71-02 | HOSE | | 1 |
| 16 | 594 62 30-01 | COVER | | 1 |
| 17 | 594 62 04-01 | SCREW | M5x30 DIN 7500C | 4 |
| 18 | 594 62 02-01 | HANDLE | | 1 |
| 19 | 595 14 14-01 | RIVET | | 4 |
| 20 | 594 62 72-01 | HEAD | Vibrating head SMART 56 115V | 1 |
| 21 | 594 62 03-01 | SCREW | M4x8 DIN 7500 | 4 |
| 22 | 594 62 14-01 | O-RING | 233x3 NBR 70 shore | 1 |
| 23 | 594 61 99-01 | DIAPHRAGM | | 1 |
| 24 | 594 62 00-01 | PLATE | | 1 |
| 25 | 594 62 01-01 | SWITCH | | 1 |
| 26 | 594 63 07-01 | WIRE | | 1 |
| 27 | 594 28 61-01 | SCREW | M4x8 BRASS DIN84A | 1 |
| 28 | 594 85 36-01 | UNIT | | 1 |
| 29 | 595 19 65-01 | CLIP | | 1 |
| 30 | 595 19 66-01 | WIRE | White wire, ETL poker, US | 1 |
| 31 | 595 19 67-01 | WIRE | Blue wire, ETL poker, US | 1 |
| 32 | 598 47 92-01 | WIRE | Red wire, ETL poker, US | 1 |
| 33 | 594 25 68-01 | SHEET | | 1 |
| 34 | 594 25 52-01 | CLAMP | | 1 |
| 35 | 595 04 52-01 | CABLE | Cable with plug EU 230 V | 1 |
| 36 | 594 62 33-01 | CABLE | Cable with plug UK 115 V | 1 |
| 37 | 595 19 68-01 | PLUG | Cable with plug US 115 V cETLus | 1 |
| 38 | 594 61 93-01 | PISTON | | 1 |

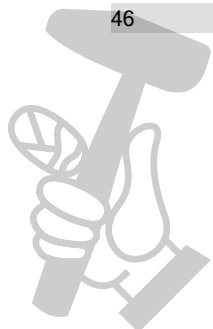


B SMART 56E
PRODUCT COMPLETE

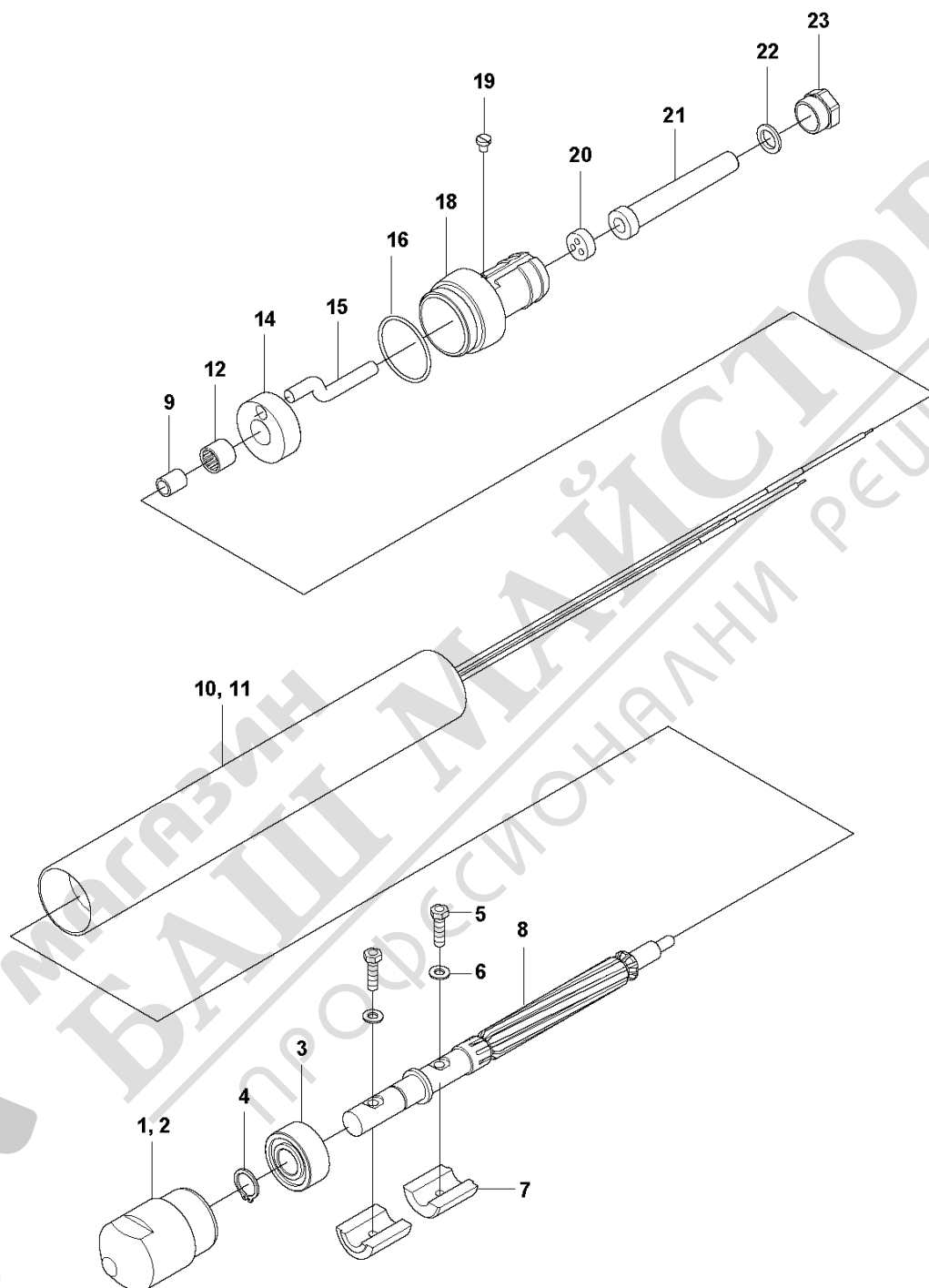


PRODUCT COMPLETE SMART 56/SMART 56E, 967856003, 967856004, 967856005, 967940301, 967940303, 2019-08

| Ref | Part No | Description | Remark | QTY KIT |
|-----|--------------|-------------|------------------------------|---------|
| 1 | 594 36 96-01 | PLUG | EU plug | 1 |
| 2 | 595 16 26-01 | PLUG | UK plug | 1 |
| 3 | 595 46 89-01 | CABLE | | 1 |
| 4 | 598 47 91-01 | WIRE | Red wire | 1 |
| 5 | 594 25 52-01 | CLAMP | | 3 |
| 6 | 594 25 68-01 | SHEET | | 3 |
| 7 | 594 61 93-01 | PISTON | | 3 |
| 8 | 594 41 31-02 | CABLE | 15m, 230V | 1 |
| 9 | 594 61 98-01 | UNIT | | 1 |
| 10 | 595 19 65-01 | CLIP | | 1 |
| 11 | 594 63 07-01 | WIRE | | 1 |
| 12 | 594 85 36-01 | UNIT | | 1 |
| 13 | 594 28 61-01 | SCREW | M4x8 BRASS DIN84A | 1 |
| 14 | 594 62 14-01 | O-RING | 233x3 NBR 70 shore | 1 |
| 15 | 594 62 03-01 | SCREW | M4x8 DIN 7500 | 1 |
| 16 | 594 62 04-01 | SCREW | M5x30 DIN 7500C | 4 |
| 17 | 594 62 71-01 | HEAD | Vibrating head SMART 56 230V | 1 |
| 18 | 594 62 72-01 | HEAD | Vibrating head SMART 56 115V | 1 |
| 19 | 594 62 02-01 | HANDLE | | 1 |
| 20 | 594 62 29-01 | COVER | | 1 |
| 21 | 594 28 64-01 | CLAMP | | 4 |
| 22 | 594 41 31-03 | CABLE | 10m, 115V | 1 |
| 23 | 595 14 59-01 | WIRE | | 2 |
| 24 | 594 28 77-03 | CABLE | White wire | 1 |
| 25 | 594 28 59-02 | WIRE | Blue wire | 1 |
| 26 | 594 52 78-03 | CABLE | Ground wire, yellow/green | 1 |
| 27 | 595 11 85-01 | SLEEVE | | 8 |
| 28 | 594 25 75-01 | INSULATION | | 3 |
| 29 | 594 79 47-01 | CLIP | | 1 |
| 30 | 594 27 67-01 | TERMINAL | | 4 |
| 31 | 594 25 71-01 | HOSE | | 1 |
| 32 | 594 25 49-03 | HOSE | | 1 |
| 33 | 595 14 14-01 | RIVET | | 4 |
| 34 | 594 28 17-01 | CLAMP | | 2 |
| 35 | 594 38 84-04 | HOSE | | 1 |
| 36 | 594 37 71-01 | ABSORBER | | 1 |
| 37 | 594 38 03-01 | NUT | | 1 |
| 38 | 594 50 08-01 | SCREW | ST 4,2x25 DIN7971 C | 2 |
| 39 | 594 50 09-01 | SCREW | ST 4,2x38 DIN7971 C | 2 |
| 40 | 594 62 65-01 | COVER | | 1 |
| 41 | 595 04 75-01 | O-RING | 120.32x2.62 NBR 70 shore | 1 |
| 42 | 594 62 25-01 | HANDLE | | 1 |
| 43 | 594 62 00-01 | PLATE | | 1 |
| 44 | 594 62 01-01 | SWITCH | | 1 |
| 45 | 594 62 32-01 | SCREW | | 3 |
| 46 | 594 61 99-01 | DIAPHRAGM | | 1 |

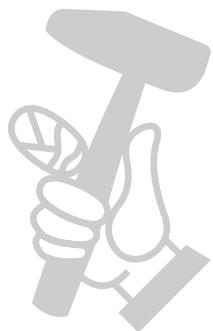


C SMART 56 / SMART 56E
VIBRATOR



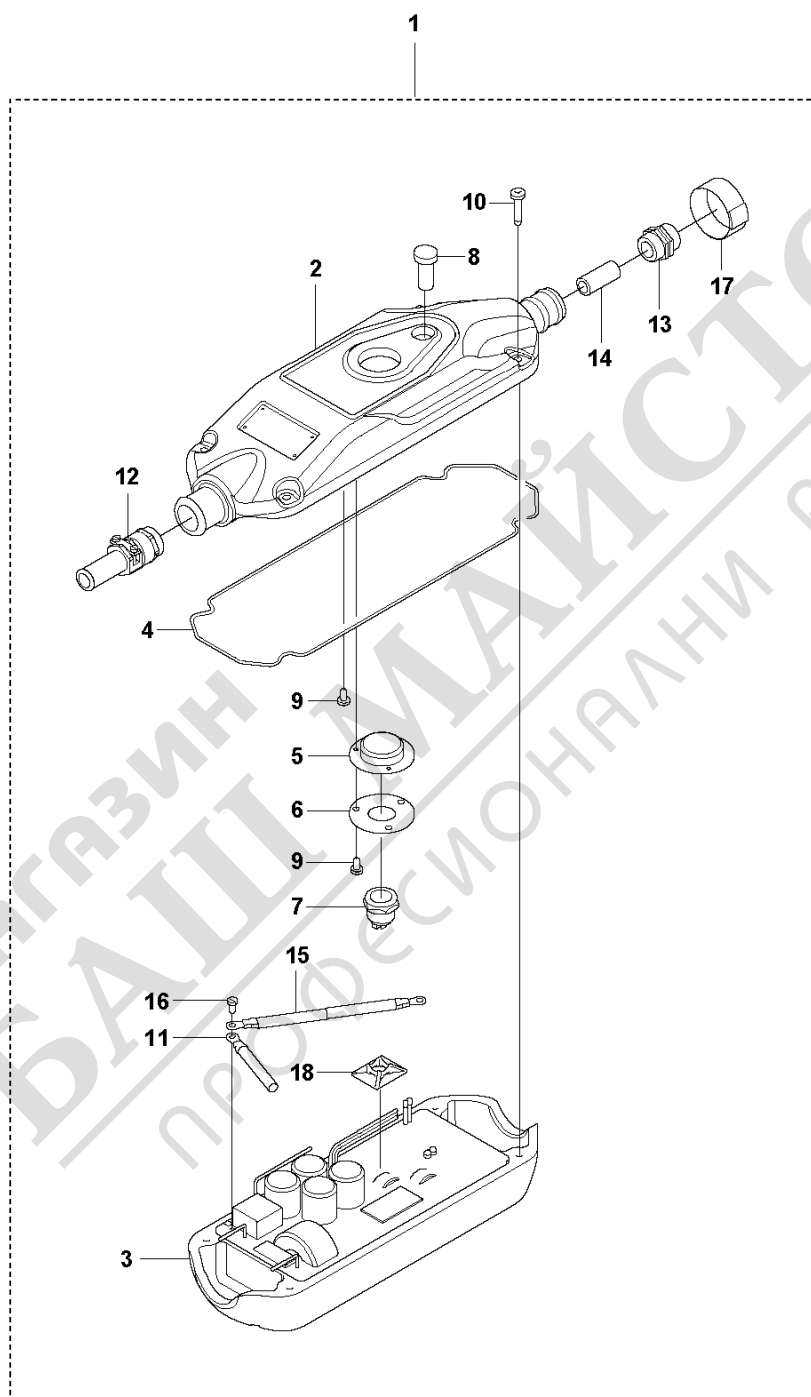
VIBRATOR SMART 56/SMART 56E, 967856003, 967856004, 967856005, 967940301, 967940303, 2019-08

| Ref | Part No | Description | Remark | QTY KIT |
|-----|--------------|---------------|--------------------------|---------|
| 1 | 594 28 91-01 | CAP | | 1 |
| 2 | 595 02 96-01 | CAP | Rubber end cap, optional | 1 |
| 3 | 594 28 93-01 | BEARING | NUP 204 E TVP2 C3 | 1 |
| 4 | 594 27 80-01 | RETAINER RING | 20x1.75 DIN471 | 1 |
| 5 | 595 05 38-01 | SCREW | M6x30 ISO 4017 8.8 A2K | 2 |
| 6 | 594 39 94-01 | WASHER | ZM6 NFE25-511 FZB | 2 |
| 7 | 595 52 37-01 | EXCENTER | | 2 |
| 8 | 594 28 92-01 | ROTOR | | 1 |
| 9 | 594 27 37-01 | BUSHING | | 1 |
| 10 | 594 62 18-01 | TUBE | Stator, complete 230 V | 1 |
| 11 | 594 62 19-01 | TUBE | Stator, complete 115 V | 1 |
| 12 | 594 27 36-01 | BEARING | | 1 |
| 14 | 594 62 20-01 | BEARING | | 1 |
| 15 | 594 27 78-02 | HOSE | | 1 |
| 16 | 594 26 69-01 | O-RING | 35x2 NBR 70 shore | 1 |
| 18 | 594 86 03-01 | NIPPLE | | 1 |
| 19 | 594 27 27-01 | SCREW | M4x5 BRASS DIN84A | 1 |
| 20 | 594 28 90-01 | GASKET | | 1 |
| 21 | 594 29 04-01 | PROTECTION | | 1 |
| 22 | 594 28 75-01 | RING | | 1 |
| 23 | 594 28 73-01 | SCREW | | 1 |



МАГАЗИН МАЙСТОРА
БАШ МАЙСТОРА
ПРОФЕСІОНАЛНИ РЕШЕННЯ

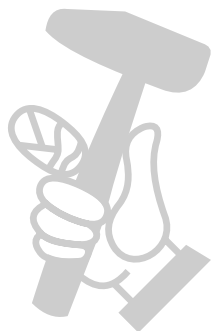
D SMART 56 / SMART 56E
ELECTRONIC CONVERTER



ELECTRONIC CONVERTER
967940301, 967940303, 2019-08

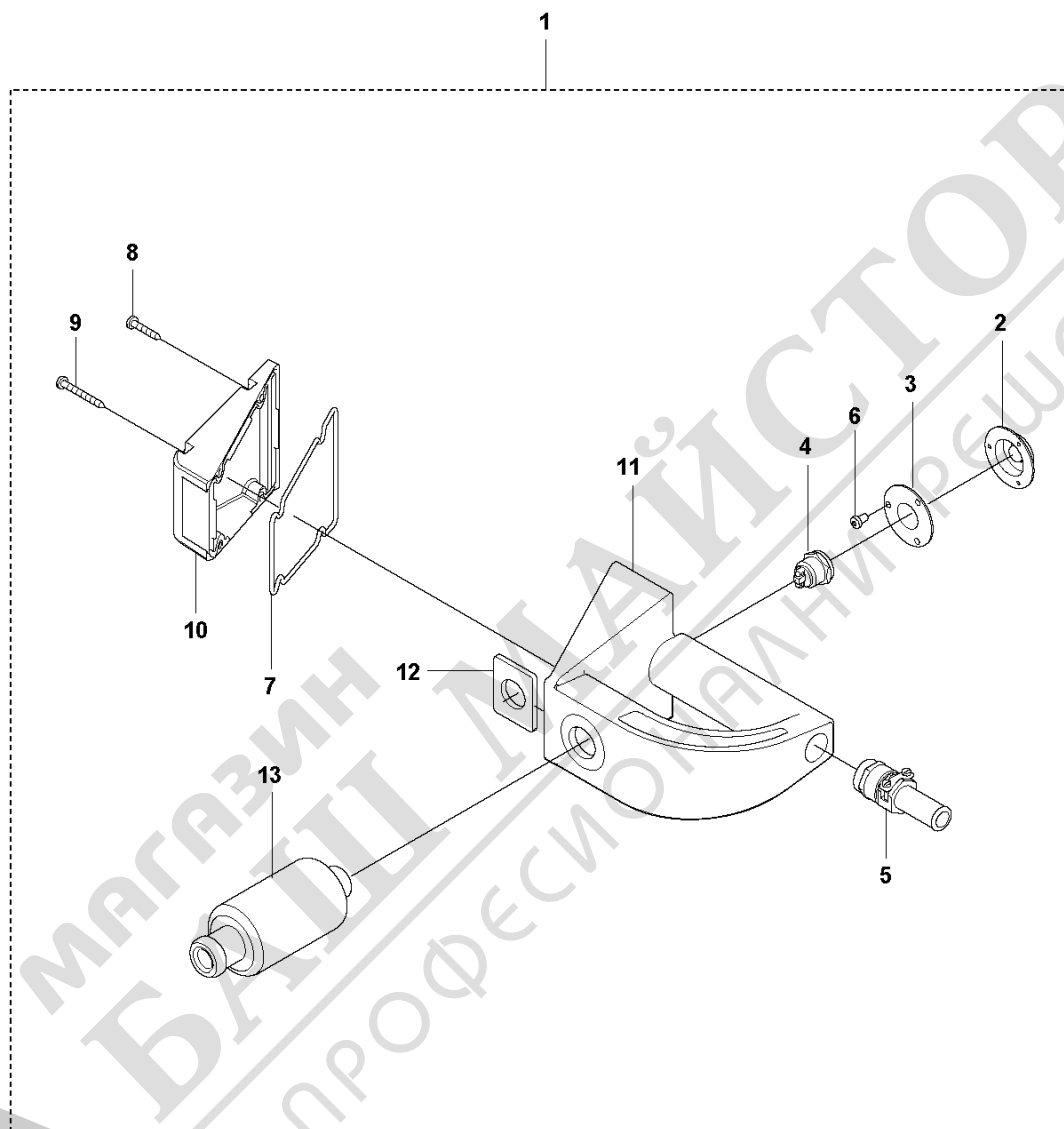
SMART 56/SMART 56E, 967856003, 967856004, 967856005,

| Ref | Part No | Description | Remark | QTY KIT | |
|-----|--------------|----------------|--------------------|---------|---|
| 1 | 598 48 80-01 | ELECTRONIC BOX | Kit without cable | 1 | |
| 2 | 594 62 30-01 | COVER | | 1 | 1 |
| 3 | 594 61 98-01 | UNIT | | 1 | 1 |
| 4 | 594 62 14-01 | O-RING | 233x3 NBR 70 shore | 1 | 1 |
| 5 | 594 61 99-01 | DIAPHRAGM | | 1 | 1 |
| 6 | 594 62 00-01 | PLATE | | 1 | 1 |
| 7 | 594 62 01-01 | SWITCH | | 1 | 1 |
| 8 | 594 62 02-01 | HANDLE | | 1 | 1 |
| 9 | 594 62 03-01 | SCREW | M4x8 DIN 7500 | 4 | 1 |
| 10 | 594 62 04-01 | SCREW | M5x30 DIN 7500C | 4 | 1 |
| 11 | 594 85 36-01 | UNIT | | 1 | 1 |
| 12 | 594 61 93-01 | PISTON | | 1 | 1 |
| 13 | 594 40 88-01 | BOX | | 1 | 1 |
| 14 | 594 25 71-01 | HOSE | | 1 | 1 |
| 15 | 594 63 07-01 | WIRE | | 1 | 1 |
| 16 | 594 28 61-01 | SCREW | M4x8 BRASS DIN84A | 1 | 1 |
| 17 | 594 28 17-01 | CLAMP | | 1 | 1 |
| 18 | 595 19 65-01 | CLIP | | 1 | 1 |



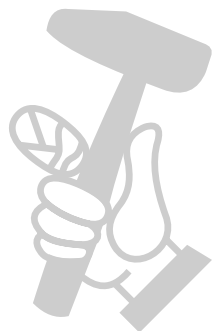
МАГАЗИН МАЙСТОРА
БАШ МАЙСТОРА
ПРОФЕСІОНАЛНИ РЕШЕННЯ

E SMART 56 / SMART 56E
HANDLE



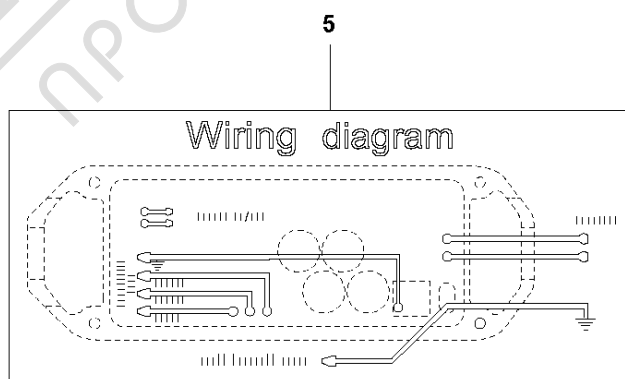
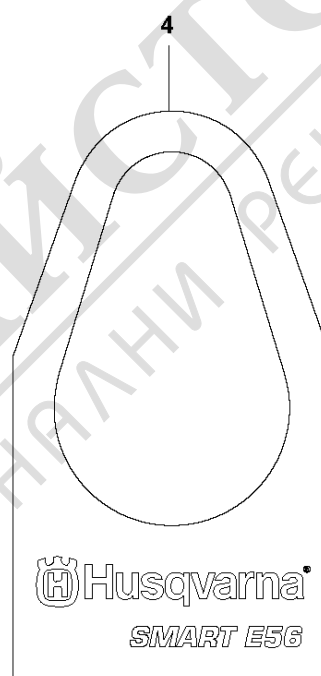
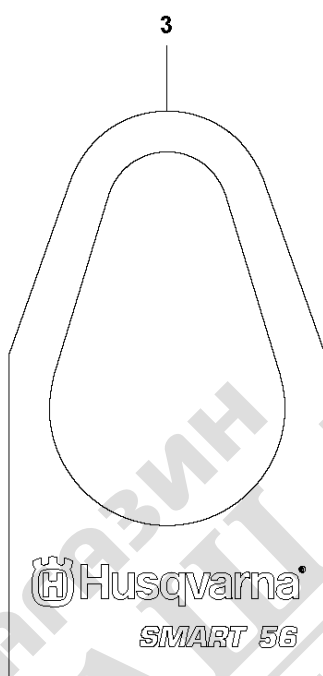
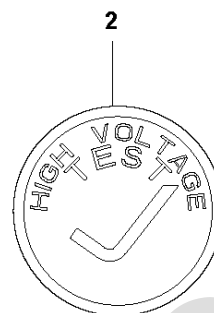
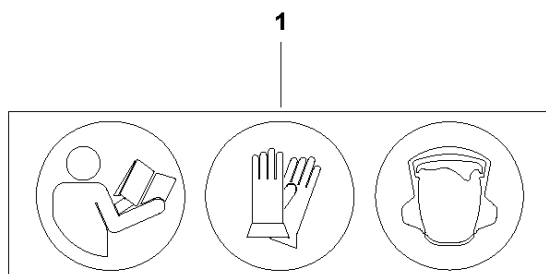
HANDLE SMART 56/SMART 56E, 967856003, 967856004, 967856005, 967940301, 967940303,
2019-08

| Ref | Part No | Description | Remark | QTY KIT | |
|-----|--------------|-------------|--------------------------|---------|---|
| 1 | 594 62 86-01 | HANDLE | Ergonomic handle kit | 1 | |
| 2 | 594 61 99-01 | DIAPHRAGM | | 1 | 1 |
| 3 | 594 62 00-01 | PLATE | | 1 | 1 |
| 4 | 594 62 01-01 | SWITCH | | 1 | 1 |
| 5 | 594 61 93-01 | PISTON | | 1 | 1 |
| 6 | 594 62 32-01 | SCREW | | 3 | 1 |
| 7 | 595 04 75-01 | O-RING | 120.32x2.62 NBR 70 shore | 1 | 1 |
| 8 | 594 50 08-01 | SCREW | ST 4,2x25 DIN7971 C | 2 | 1 |
| 9 | 594 50 09-01 | SCREW | ST 4,2x38 DIN7971 C | 2 | 1 |
| 10 | 594 62 65-01 | COVER | | 1 | 1 |
| 11 | 594 62 25-01 | HANDLE | | 1 | 1 |
| 12 | 594 38 03-01 | NUT | | 1 | 1 |
| 13 | 594 37 71-01 | ABSORBER | | 1 | 1 |



МАГАЗИН МАЙСТОРА
БАШ МАЙСТОРА
ПРОФЕСИОНАЛНИ РЕШЕНИЯ

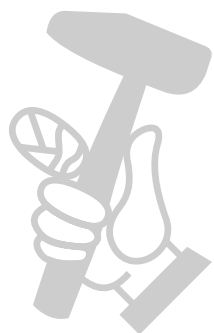
F SMART 56 / SMART 56E
DECALS



DECALS
2019-08

SMART 56/SMART 56E, 967856003, 967856004, 967856005, 967940301, 967940303,

| Ref | Part No | Description | Remark | QTY KIT |
|-----|--------------|-------------|--------|---------|
| 1 | 594 62 75-01 | DECAL | | 1 |
| 2 | 595 50 49-01 | LABEL | | 1 |
| 3 | 596 31 15-01 | DECAL | | 1 |
| 4 | 596 31 20-01 | DECAL | | |
| 5 | 594 62 26-01 | DECAL | | 1 |



МАГАЗИН
БАШ МАЙСТОРА
ПРОФЕССИОНАЛНИ РЕШЕНИЯ