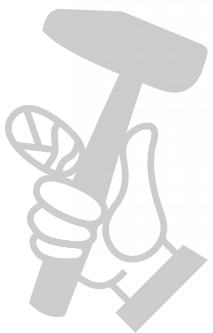
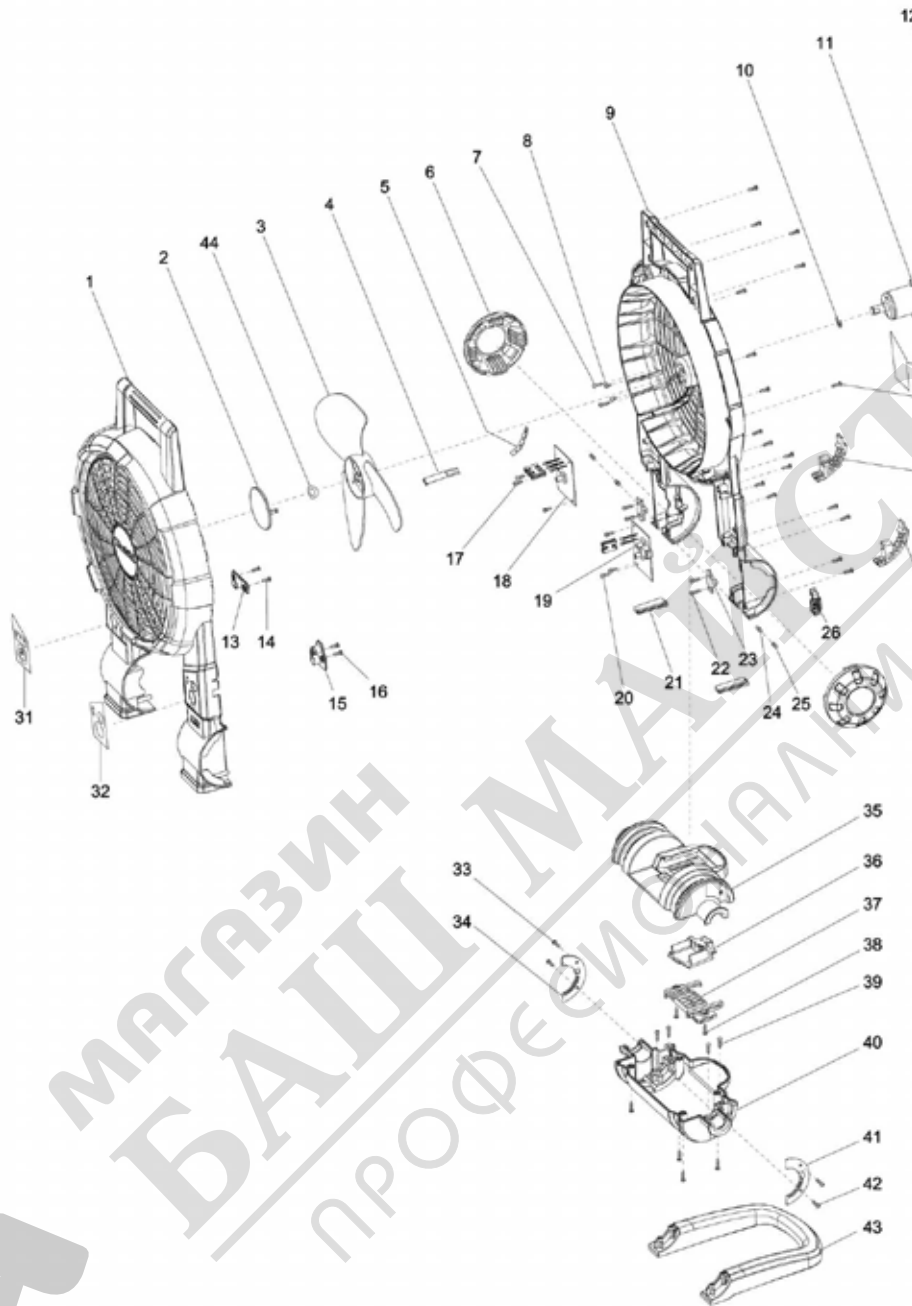


Model No.DCF201 CORDLESS FAN



МАГАЗИН МАШИН И ИНСТРУМЕНТОВ
БАШ МАШИНАЛ И ИНСТРУМЕНТИ
ПРОФЕСИОНАЛНИ РЕШЕНИЯ

Model No.DCF201 CORDLESS FAN

| Артикул | Номер на частта | Описание | Смяна | Количество | New/Old | Продажба | Покупка | Забележка |
|---------|-----------------|--------------------|-------|------------|---------|----------|---------|-----------|
| 001 | TE00000002 | HOUSING SET (BLUE) | | 1 | * | | | |
| D10 | | INC. 9 | | | * | | | |
| 001-1 | TE00000166 | HOUSING SET (BLUE) | < | 1 | | | | |
| D10 | | INC. 9 | | | | | | |
| 002 | TE00000003 | FAN BLADE COVER | | 1 | | | | |
| 003 | TE00000004 | FAN BLADE | | 1 | | | | |
| 004 | TE00000005 | WIRE COVER A | | 1 | | | | |
| 005 | TE00000006 | WIRE COVER B | | 1 | | | | |
| 006 | TE00000007 | SIDE COVER | | 2 | | | | |
| 007 | TE00000028 | TAPPING SCREW 3X14 | | 2 | | | | |
| 008 | TE00000030 | P.H.SCREW M3X5 | | 2 | | | | |
| 009 | TE00000002 | HOUSING SET (BLUE) | | 1 | * | | | |
| D10 | | INC. 1 | | | * | | | |
| 009-1 | TE00000166 | HOUSING SET (BLUE) | < | 1 | | | | |
| D10 | | INC. 1 | | | | | | |
| 010 | TE00000009 | STOP RING | | 1 | | | | |
| 011 | TE00000041 | MOTER ASSEMBLY | | 1 | | | | |
| 012 | TE00000011 | MOTOR COVER | | 1 | | | | |
| 013 | TE00000012 | BUTTON PROTECTER R | | 1 | | | | |
| 014 | TE00000029 | TAPPING SCREW 3X10 | | 2 | | | | |
| 015 | TE00000013 | BUTTON PROTECTER L | | 1 | | | | |
| 016 | TE00000029 | TAPPING SCREW 3X10 | | 2 | | | | |
| 017 | TE00000029 | TAPPING SCREW 3X10 | | 3 | | | | |
| 018 | TE00000042 | TIME PCB BOARD | | 1 | | | | |
| 019 | TE00000043 | SWITCH PCB BOARD | | 1 | | | | |
| 020 | TE00000029 | TAPPING SCREW 3X10 | | 3 | | | | |
| 021 | TE00000016 | FRONT FOOT | | 2 | | | | |
| 022 | TE00000028 | TAPPING SCREW 3X14 | | 4 | | | | |
| 023 | TE00000017 | SPRING HOLDER | | 2 | | | | |
| 024 | TE00000008 | PIN | | 2 | | | | |
| 025 | TE00000027 | SPRING | | 2 | | | | |
| 026 | TE00000018 | ADAPTER SOCKET CAP | | 1 | | | | |
| 027 | TE00000019 | REAR FOOT L | | 1 | | | | |
| 028 | TE00000020 | REAR FOOT R | | 1 | | | | |
| 029 | TE00000028 | TAPPING SCREW 3X14 | | 1 | | | | |
| 031 | TE00000032 | SWITCH LABEL L | | 1 | | | | |
| 032 | TE00000033 | SWITCH LABEL R | | 1 | | | | |
| 033 | TE00000029 | TAPPING SCREW 3X10 | | 2 | | | | |
| 034 | TE00000025 | CLUTCH PLATE R | | 1 | | | | |
| 035 | TE00000021 | BASE SET | | 1 | | | | |
| D10 | | INC. 40 | | | | | | |
| 036 | TE00000022 | TERMINAL | | 1 | * | | | |
| 036-1 | TE00000247 | TERMINAL | O | 1 | | | | |
| 037 | TE00000023 | TERMINAL HOLDER | | 1 | | | | |
| 038 | TE00000028 | TAPPING SCREW 3X14 | | 2 | | | | |
| 039 | TE00000028 | TAPPING SCREW 3X14 | | 8 | | | | |
| 040 | TE00000021 | BASE SET | | 1 | | | | |
| D10 | | INC. 35 | | | | | | |
| 041 | TE00000024 | CLUTCH PLATE L | | 1 | | | | |

Please order the parts with part number.

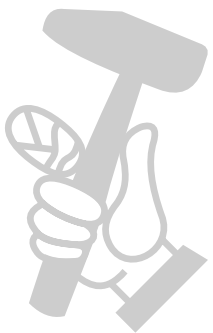
Print Date 13/4/2020

Model No.DCF201 CORDLESS FAN

| Артикул | Номер на частта | Описание | Смяна | Количество | New/Old | Продажба | Покупка | Забележка |
|---------|-----------------|-----------------------|-------|------------|---------|----------|---------|-----------|
| 042 | TE00000029 | TAPPING SCREW 3X10 | | 2 | | | | |
| 043 | TE00000026 | STAND | | 1 | | | | |
| 044 | TE00000040 | WAVE WASHER | | 1 | | | | |
| A01 | TEB0000006 | AC ADAPTER | | 1 | * | | | |
| A01-1 | TE00000173 | AC ADAPTOR | 0 | 1 | | | | |

Please order the parts with part number.

Print Date 13/4/2020



МАГАЗИН МАЙСТОРА®
БАШ МАЙСТОРА®
ПРОФЕСИОНАЛНИ РЕШЕНИЯ