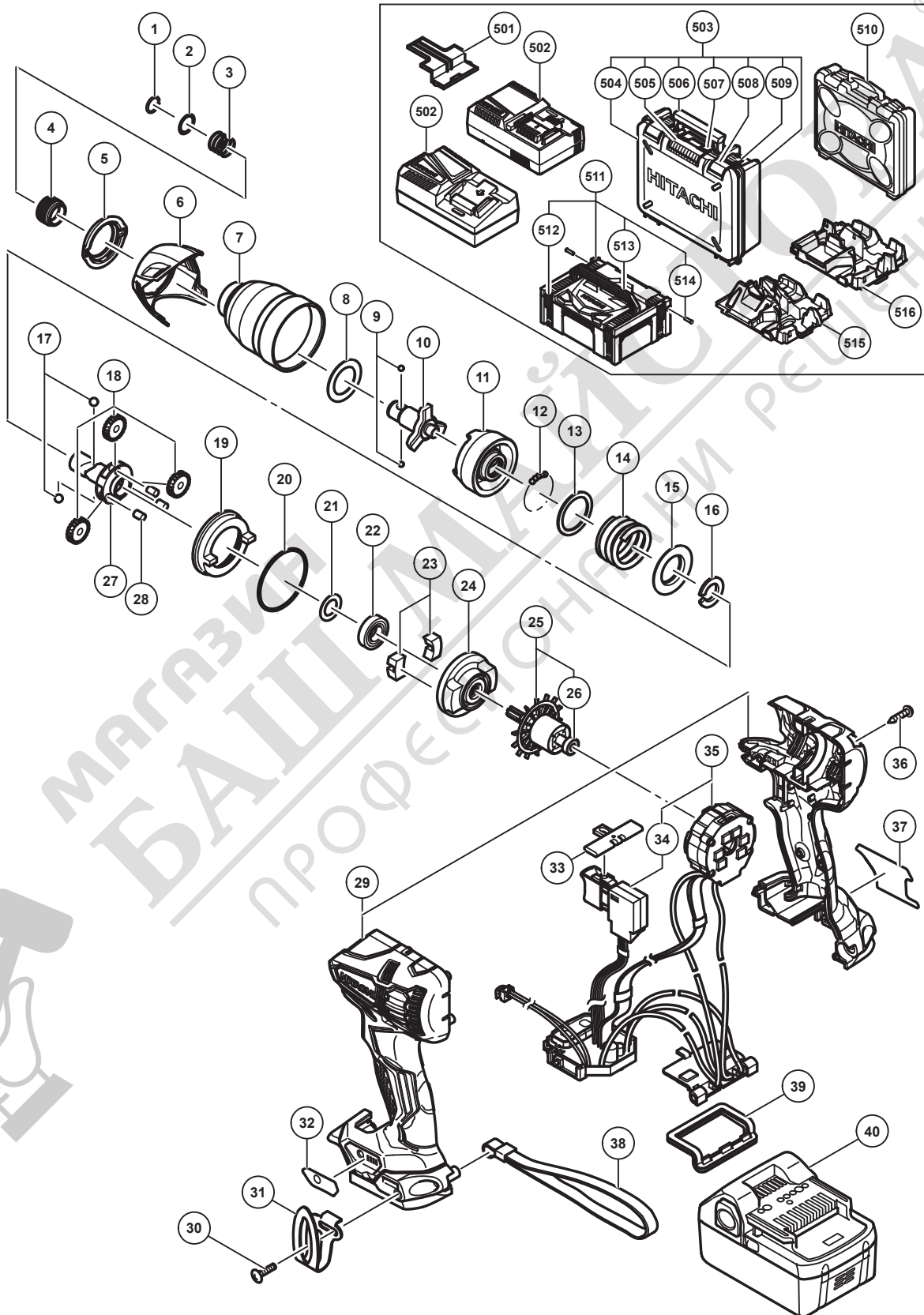


## ELECTRIC TOOL PARTS LIST

**CORDLESS IMPACT DRIVER**  
**Model WH 18DBDL2**

**2016·10·19**  
**(E1)**



## PARTS

WH 18DBDL2

ITEM NO.	CODE NO.	DESCRIPTION	NO. USED	REMARKS	
1	330619	RETAINING RING	1		
2	330856	WASHER (D)	1		
3	370581	GUIDE SPRING	1		
4	339350	GUIDE SLEEVE	1		
5	339198	FRONT CAP	1		
6	370575	PROTECTOR	1		
7	370578	HAMMER CASE	1		
8	370579	WASHER (F)	1		
9	319535	STEEL BALL D3.5 (10 PCS.)	2		
*	10	370570	ANVIL (S)	1	
*	10	370571	ANVIL (L)	1	FOR CHN,TPE,UAE,THA,IND,KOR
	11	339192	HAMMER	1	
	12	959148	STEEL BALL D3.175 (10 PCS.)	28	
	13	370580	WASHER (J)	1	
	14	339194	HAMMER SPRING	1	
	15	316172	WASHER (S)	1	
	16	370582	STOPPER	1	
	17	959154	STEEL BALL D5.556 (10 PCS.)	2	
	18	370584	IDLE GEAR SET (3 PCS.)	3	
	19	370160	RING GEAR	1	
	20	983852	O-RING (S-42)	1	
	21	370583	WASHER (E)	1	
	22	6901VV	BALL BEARING 6901VV	1	
	23	333952	DAMPER	2	
	24	335317	INNER COVER (E)	1	
	25	361046	ROTOR PINION ASS'Y	1	INCLUD.26
	26	335723	BALL BEARING 604DD	2	
	27	339193	SPINDLE	1	
	28	370585	NEEDLE ROLLER	3	
	29	370572	HOUSING (A).(B) SET	1	
	30	327001	TRUSS HD. SCREW M4 (BLACK)	1	
	31	336372	HOOK	1	
	32	370573	PANEL SHEET (EX)	1	
	33	324225	PUSHING BUTTON (B)	1	
	34	339217	DC-SPEED CONTROL SWITCH	1	
	35	370577	WIRING ASS'Y	1	INCLUD.34
	36	313687	TAPPING SCREW (W/FLANGE) D3 X 16 (BLACK)	9	
	37		NAME PLATE	1	
	38	306952	STRAP (BLACK)	1	
	39	370728	TERMINAL RUBBER (A)	1	
*	40	339782	BATTERY BSL 1830C (USA,CAN)	2	INCLUD.501
*	40	330068	BATTERY BSL 1830 (EUROPE,AUS,NZL)	2	INCLUD.501
*	40	336690	BATTERY BSL 1830 (THA)	2	INCLUD.501
*	40	334729	BATTERY BSL 1830 (TPE)	2	INCLUD.501
*	40	336385	BATTERY BSL 1850 (EUROPE,AUS,NZL)(2 PCS.)	2	INCLUD.501
*	40	370739	BATTERY BSL 1850 (KOR)	2	INCLUD.501
*	40	338892	BATTERY BSL 1860 (EUROPE,AUS,NZL)(2 PCS.)	2	INCLUD.501
*	40	338890	BATTERY BSL 1860 (USA,CAN)	2	INCLUD.501
*	40	370738	BATTERY BSL 1860 (CHN)	2	INCLUD.501
*	40	338891	BATTERY BSL 1860 (EUROPE,AUS,NZL)	2	INCLUD.501

**PARTS**

WH 18DBDL2

ITEM NO.	CODE NO.	DESCRIPTION	NO. USED	REMARKS
*	40	335790	BATTERY BSL 1850 (EUROPE,AUS,NZL)	2 INCLUD.501

**STANDARD ACCESSORIES**

ITEM NO.	CODE NO.	DESCRIPTION	NO. USED	REMARKS
	501	329897	BATTERY COVER	1
*	502		CHARGER (MODEL UC 18YFSL)	1
*	502		CHARGER (MODEL UC 18YSL3)	1
*	503	370700	CASE ASS'Y	1 INCLUD.504-509 FOR USA,CAN
*	504	339210	COVER (A)	1 FOR USA,CAN
*	505	339212	CENTER LATCH	1 FOR USA,CAN
*	506	339211	HANDLE (A)	1 FOR USA,CAN
*	507	339213	CENTER KNOB	1 FOR USA,CAN
*	508	339215	SIDE KNOB	2 FOR USA,CAN
*	509	339214	SIDE LATCH	2 FOR USA,CAN
*	510	337852	CASE	1 EXCEPT FOR EUROPE,GBR,AUS,USA,CAN
*	511	336471	CASE ASS'Y (STACKABLE 2)	1 INCLUD.512-514 FOR EUROPE,GBR,AUS
*	512	336472	LATCH	4 FOR EUROPE,GBR,AUS
*	513	336473	HANDLE	1 FOR EUROPE,GBR,AUS
*	514	336474	HINGE	2 FOR EUROPE,GBR,AUS
*	515	339776	INNER TRAY	1 FOR GBR
*	516	336475	INNER TRAY	1 FOR EUROPE,AUS

**OPTIONAL ACCESSORIES**

ITEM NO.	CODE NO.	DESCRIPTION	NO. USED	REMARKS
*	601	992671	+ DRIVER BIT (B) NO.2 50L	1 EXCEPT FOR CHN,TPE,UAE,THA,IND,KOR
*	602	992672	+ DRIVER BIT (B) NO.3 50L	1 EXCEPT FOR CHN,TPE,UAE,THA,IND,KOR
*	603	983006	+ DRIVER BIT NO.2 65L	1 FOR CHN,TPE,UAE,THA,IND,KOR
*	604	983011	+ DRIVER BIT NO.3 65L	1 FOR CHN,TPE,UAE,THA,IND,KOR
	605	321823	DRILL CHUCK AND ADAPTER SET	1 INCLUD.606,607
	606	987575	CHUCK WRENCH FOR 10VLB-D,10VLR-D	1
	607	307543	CHUCK ADAPTER	1
	608	306927	SILICONE RUBBER	1
	609	309922	GREASE (ATTOLUB MS NO.2) 500G	1
	610	325149	GREASE (MOLUB-ALLOY NO.777-1) 75G	1