

# 18V Brushless 165mm (6-1/2") Circular

**Makita**<sup>®</sup>

DHS660 - DHS661



**BRUSHLESS**



МАГАЗИНИ

**БАШ МАЙСТОРА®**

ПРОФЕСИОНАЛНИ РЕШЕНИЯ

**Makita®**

**AWS**

Auto - start Wireless System

**WIRELESS, ON DEMAND, DUST EXTRACTION**

Makita's Auto-start Wireless System (AWS) has modernised on-demand dust extraction to meet the needs of cordless power tool users. AWS allows you to work with maximum efficiency, without the hazard of dust & leads. Featuring our legendary cordless technology, the AWS range has the power, speed & runtime to keep you ahead of the game.



**Makita®**

**LXT**<sup>®</sup>

## THE LXT ADVANTAGE

4 key components make up our LXT<sup>®</sup> Advantage, providing you with the most advanced, dependable 18V tools on the market. Our fast-charging batteries, rapid optimum chargers, industry leading motors and our STAR Protection computer controls make each and every one of the world's largest 18V range of tools the best option for the job, no question.



## Product Objectives

- Expand our line up of brushless tools with market leading 165mm circular saws
- Ideal for a wide range of trades requiring a compact powerful saw



# Product Overview

Compact ergonomic design

Brushless

Dust extraction nozzle

Efficut blade (right side)



**AWS**<sup>\*</sup>  
Auto-start Wireless System

**ADT**

Large bevel capacity

Blower function

Twin LED job light



\* Feature applicable to DHS661 only

# Product Specification Sheet

## DHS660/661 – 18V Brushless Circular Saw



\* DHS661ZU shown above

	DHS661	DHS660
Motor design	Brushless	Brushless
Blade diameter	165mm (6-1/2")	165mm (6-1/2")
Cut capacity	57mm	57mm
Blade Position	Right side	Right side
Bevel Capacity	50°	50°
No load speed	5,000rpm	5,000rpm
Overall length	270mm	270mm
Skin weight	2.53kg	2.53kg
Voltage	18V	18V

- **Compact ergonomic design** – adds manoeuvrability and control whilst reducing fatigue to the operator
- **Brushless** – delivers an incredible runtime with up to 137 cuts in 45 x 140 hardwood & up to 215 cuts in 38 x 235mm SPF with a 6.0Ah battery
- **Dust extraction nozzle** – for connection to dust extraction vacuum
- **Efficut blade (right side)** – delivers superior performance with an advanced cutting design with no equal
- Delivers
- **Blower function** – helps to clear dust and away from the cut line
- **Electric brake** – quickly stops the blade rotation after the switch has been disengaged
- **Twin LED job light** – for improved visibility in low light environments
- **Large bevel capacity** – up to 50° bevel making it incredibly versatile for a wide range of cutting applications
- **ADT (Automatic torque Drive Technology)** – automatically gives optimal rpm to torque ratio to produce the fastest cut in light or hard applications
- **AWS (Auto-start Wireless System)** – on demand dust extraction (DHS661 Only)

# Advantages

## Innovation



AWS for on demand extraction with DHS661

## Versatility



50° bevel capacity

## Speed



Reduces rpm and increase torque under load

## Convenience



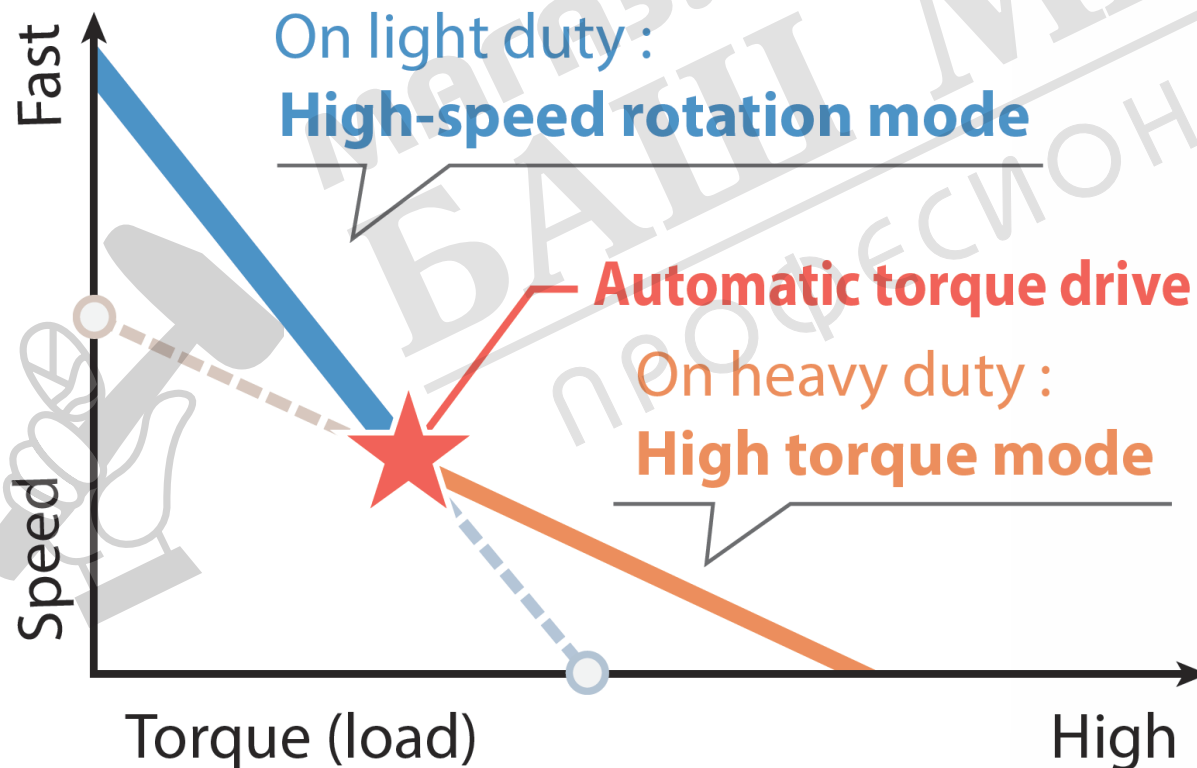
Blows dust from cut line + twin LED job light

# Advantages

## Maximum performance

Experience incredible performance in a compact chassis with the combination of a purpose built brushless motor that delivers a no load speed 5,000rpm and Automatic torque Drive Technology (ADT).

**ADT**

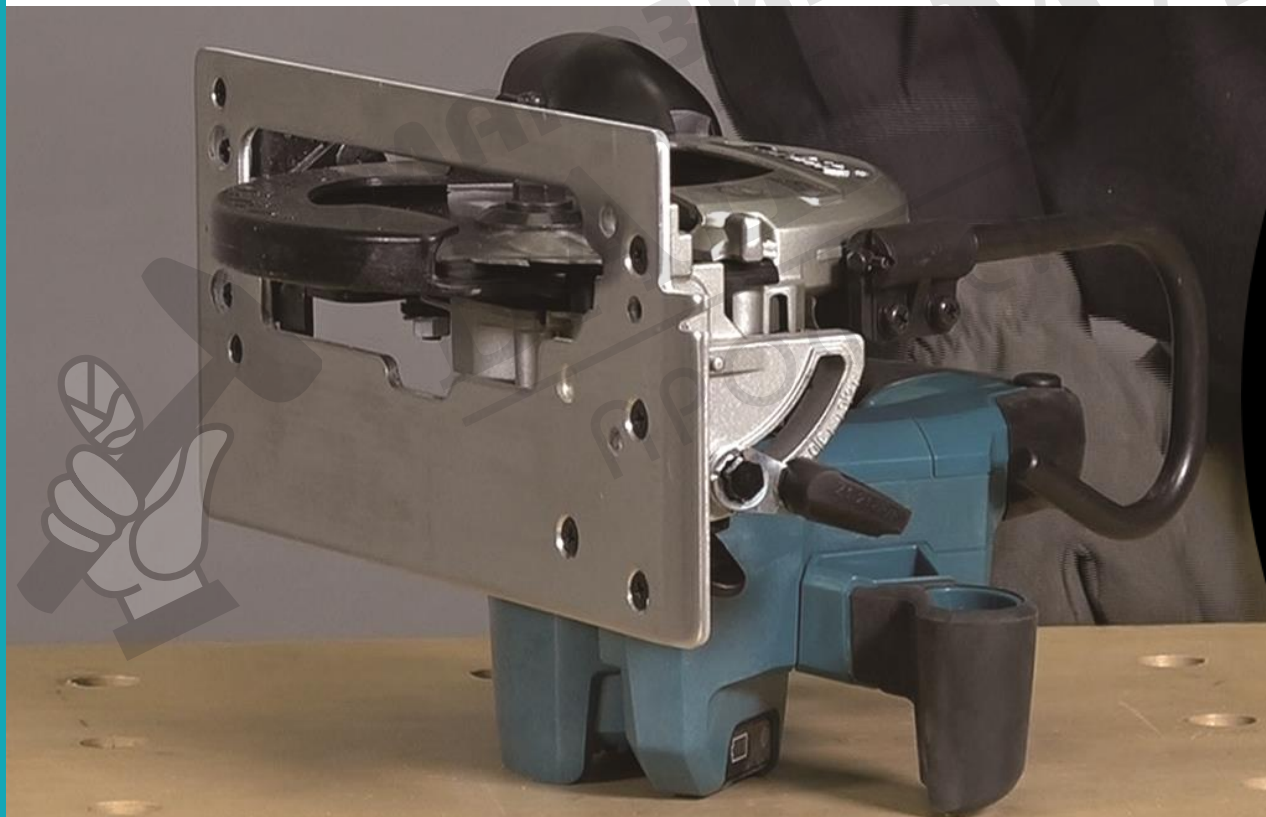




# Advantages

## Superior ergonomics

The all new DHS661/660 design delivers superior ergonomics with a lighter, more compact design than its predecessor for improved manoeuvrability. It also makes blade changes easy thanks to the flat motor housing and adds control with its ergonomic handle with rubberised sure grip design.



Predecessor  
**350mm**

DHS661 / 660  
**270mm**



**-80mm**



# Advantages

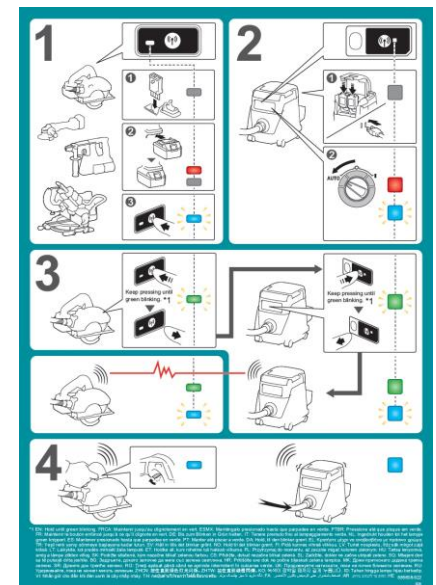
The DHS661 can pair to our 18Vx2 Brushless AWS Dust Extraction Vacuum (DVC864L) thanks to the new Auto-Start Wireless System.

This feature enables automatic start up of the vacuum when the trigger is pulled on the tool for on demand dust extraction.

The DVC864L will also run for several seconds after the trigger has been released to pull any remaining material completely through the hose.






## How to pair your tools

1. Turn the DVC864L power dial to "AUTO."
2. Press and hold the  button on the DHS661 for 3 seconds until the light flashes **Green**.
3. Press and hold the  button on the DVC864L for 3 seconds until the light flashes **Green**.
4. Lights will turn to flashing **Blue** when the two units are paired.



[Click Here for instructional video – Pairing Bluetooth Tools](#)

# Our Range

	DHS661	DHS660	DHS680	DSS610	DSS611
					
Motor design	Brushless	Brushless	Brushless	Brushed	Brushed
Blade diameter	165mm (6-1/2")	165mm (6-1/2")	165mm (6-1/2")	165mm (6-1/2")	165mm (6-1/2")
Blade Position	Right side	Right side	Left side	Left side	Left side
Bevel Capacity	50°	50°	50°	50°	50°
No load speed	5,000rpm	5,000rpm	5,000rpm	3,700rpm	3,700rpm
Overall length	270mm	270mm	350mm	347mm	347mm
Skin weight	2.53kg	2.53kg	2.63kg	2.53kg	2.43kg
Voltage	18V	18V	18V	18V	18V
Electric Brake	Yes	Yes	Yes	Yes	No
Automatic Torque Drive	Yes	Yes	Yes	No	No
Auto-start Wireless System	Yes	No	No	No	No

# Accessories

Standard Accessories		
	B-62991	Efficut 165mm 25T Blade
	783203-8	Hex wrench
	199230-9	Dust extraction nozzle
	198901-5	Wireless Unit (DHS661 ONLY)

Optional Accessories		
	B-62991 B-57358	Efficut 165mm 25T Blade Efficut 165mm 56T Blade
	199231-7	Tool hanger
	199232-5	Guide rail adapter set
	194368-5 194925-9 194367-7	1400mm Guide rail track 1900mm Guide rail track 3000mm Guide rail track