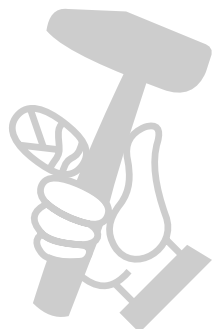
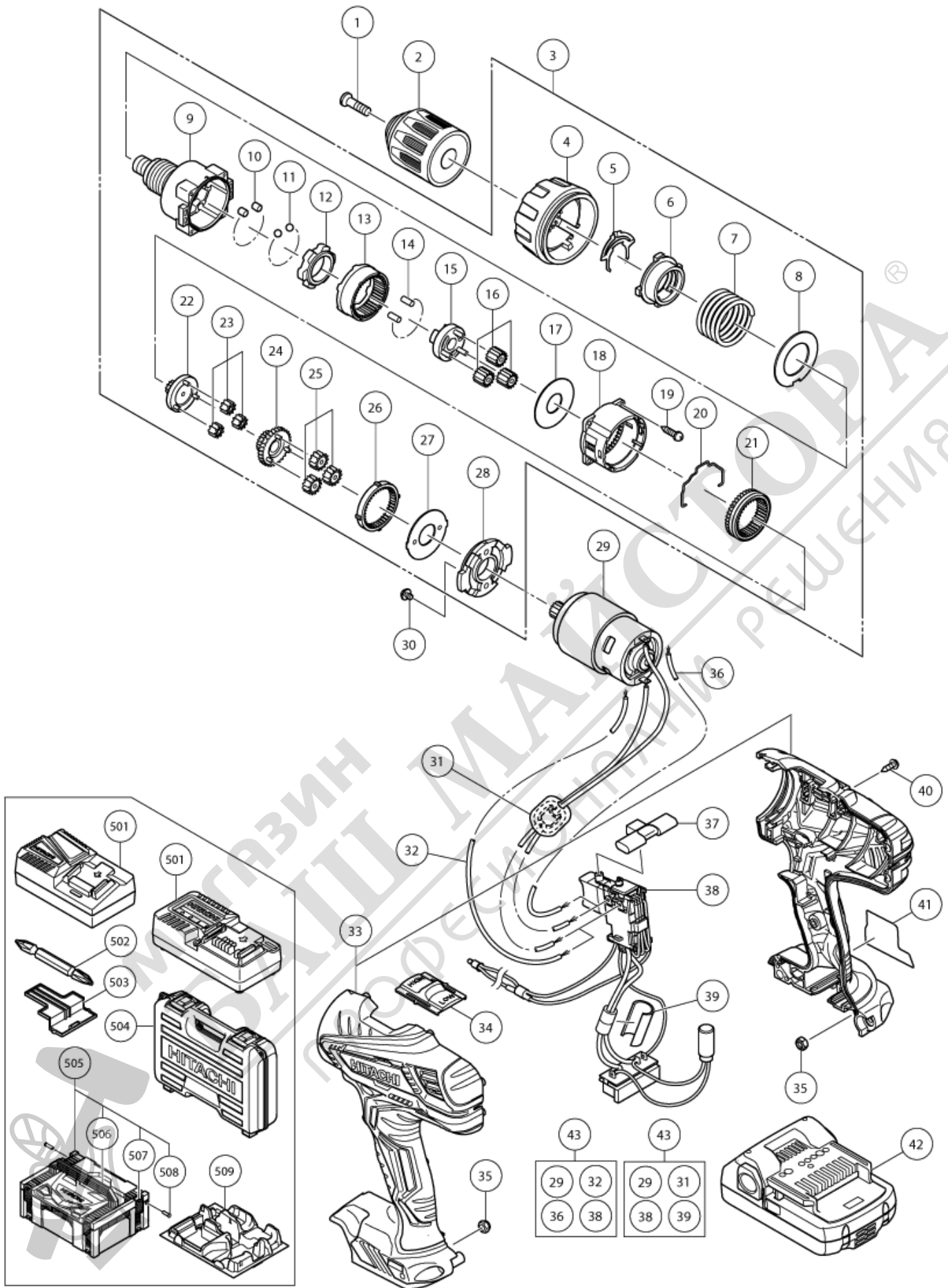


nÂ°	Artikel	Aantal gebruikt
1	311959 SPECIAL SCREW M6X23 (LEFT HAND)	1
2	336852 DRILL CHUCK 13VLRW-N (W/O CHUCK WRENCH)	1
3	337120 GEAR BOX ASS'Y	1
4	337130 CLUTCH DIAL	1
5	337129 CLICK SPRING NEW	1
6	337222 NUT NEW	1
7	337124 SPRING NEW	1
8	312714 WASHER (D)	1
9	337121 FRONT CASE	1
10	337123 ROLLER SET (6 PCS)	6
11	306936 STEEL BALL D5	6
12	337125 LOCK RING NEW FEB	1
13	312715 RING GEAR	1
14	330806 NEEDLE ROLLER (A) SET	6
15	337126	1
16	312705 PLANET GEAR (C) SET (3 PCS.)	3
17	312704 WASHER (A)	1
18	335959 REAR CASE	1
19	324357 SCREW SET D3X12 (4 PCS.)	4
20	332017 SHIFT ARM	1
21	332013 SLIDE RING GEAR	1
22	337127 PINION (C)	1
23	315816 PLANET GEAR (B) SET (3 PCS)	3
24	337128 PINION (B) NEW	1
25	337122 PLANET GEAR (A) SET (3 PCS) NEW JAN	3
26	332023 FIRST RING GEAR	1
27	312716 WASHER (B)	1
28	312698 MOTOR SPACER	1
29	337115 MOTOR DC 18 VOLT	1
30	317333 MACHINE SCREW M4X6 (W/SP.WASHER)	2
32	337117 INTERNAL WIRE (BLACK) 110L NEW	1
33	336851 HOUSING SET (A+B)	1
34	336855	1
35	327002 LOCK NUT M4 (BLACK)	2
37	336856 PUSHING BUTTON	1
38	336632 SWITCH TERMINAL SET	1
40	313687 TAPPING SCREW (W/FLANGE) D3X16 (BLACK)	9
41	NAME PLATE	1

nÂ°	Artikel	Aantal gebruikt
42	334726 BATTERY BSL 1815 (TPE)	2
42	335788 BATTERY BSL 1825 (EUROPE,AUS,NZL)	2
42	333352 BATTERY BSL 1815 (EUROPE)	2
43	337135 WIRING ASS'Y NEW MAY	1
43	337133 WIRING ASS'Y	1
501	CHARGER (MODEL UC 18YKSL)	1
501	CHARGER (MODEL UC 18YFSL)	1
502	983006 + DRIVER BIT NO.2 65L	1
503	329897 BATTERY COVER	1
504	336642	1
505	336471 CASE ASS'Y (STACKABLE)	1
506	336473 HANDLE (HSC) NEW	1
507	336472 LATCH	4
508	336474 HINGE	2
509	336475 INNER TRAY	1



МАГАЗИН МАЙСТОРА
БАШ МАЙСТОРА
ПРОФЕСИОНАЛНИ РЕШЕНИЯ



Rev.1

形名
DS18DJL