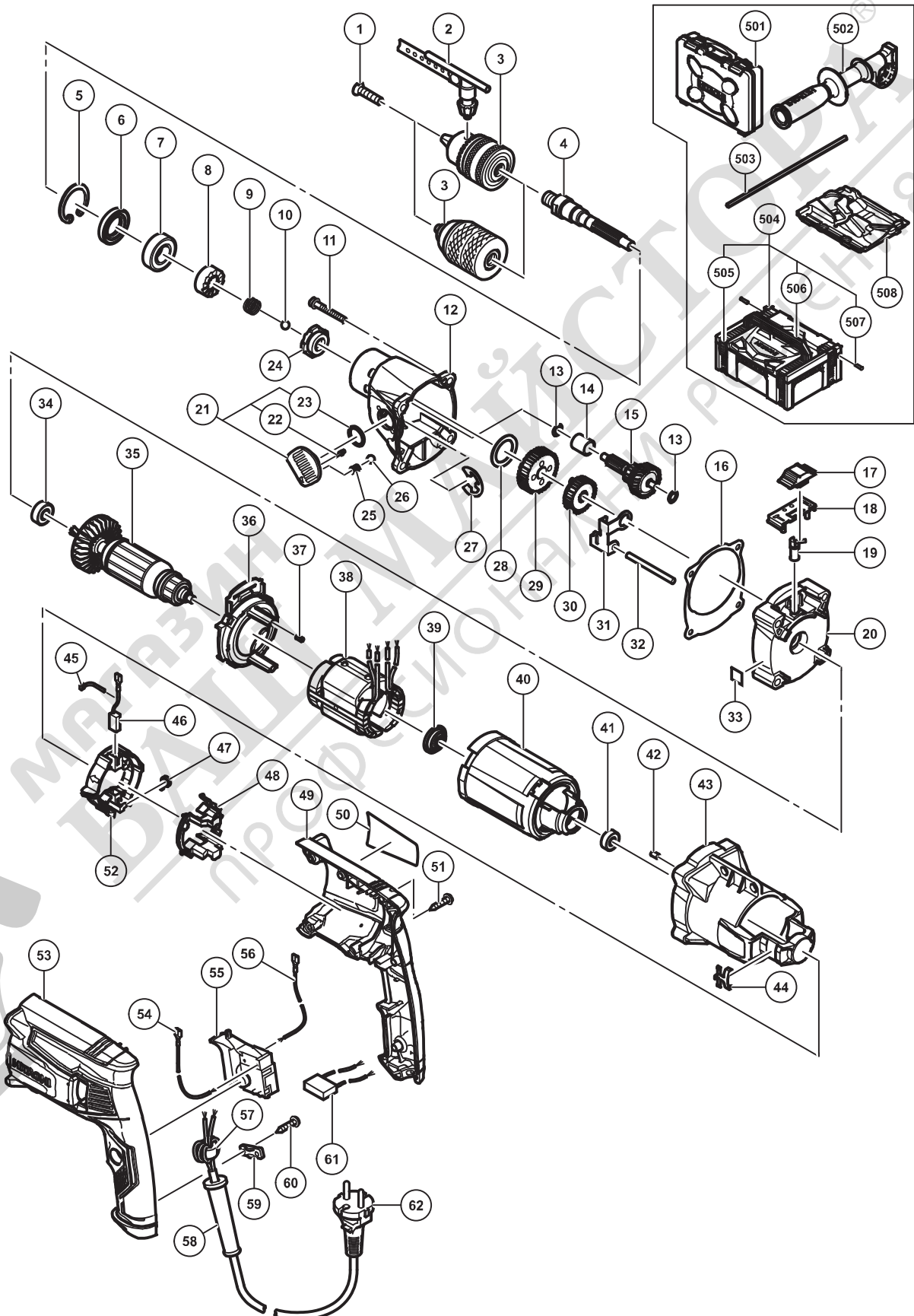


ELECTRIC TOOL PARTS LIST

■ **IMPACT DRILL**
Model DV 20VD

2015-7-6
(E1)



PARTS

DV 20VD

ITEM NO.	CODE NO.	DESCRIPTION	NO. USED	REMARKS
1	995344	FLAT HD. SCREW (A) (LEFT HAND) M6 X 25	1	
* 2	987576	CHUCK WRENCH FOR 13VLB-D,13VLR-D	1	EXCEPT FOR NZL,GBR,SAF,RUS,EUROPE
* 3	321814	DRILL CHUCK 13VLRB-D	1	INCLUD.1,2
* 3	319546	DRILL CHUCK 13VLR-N (KEYLESS TYPE)	1	FOR NZL,GBR,SAF,RUS,EUROPE
4	338738	SPINDLE (A)	1	
5	939556	RETAINING RING FOR D35 HOLE (10 PCS.)	1	
6	971745	OIL SEAL (A)	1	
7	6003DD	BALL BEARING 6003DD	1	
8	338771	RATCHET (D)	1	
9	984101	SPRING (A)	1	
10	959150	STEEL BALL D6.35 (10 PCS.)	1	
11	338764	HEX. SOCKET HD. BOLT (W/FLANGE) M5 X 45	4	
12	338769	GEAR COVER (A) ASS'Y	1	INCLUD.24
13	322852	WASHER (B)	2	
14	338744	DISTANCE PIECE	1	
* 15	338767	SECOND PINION (B)	1	
* 15	338743	SECOND PINION (A)	1	FOR SLIP CLUTCH
16	339222	PACKING	1	
17	338746	CHANGE LEVER	1	
18	338747	CHANGE COVER	1	
19	338748	CHANGE SHAFT	1	
20	338745	INNER COVER (A)	1	
21	338737	SHIFT LEVER ASS'Y	1	INCLUD.22,23
22	322848	SHIFT PIN	1	
23	878885	O-RING (S-18)	1	
24	338770	RATCHET (C)	1	
25	981328	SPRING (H)	1	
26	335299	STEEL BALL D3.5 (10 PCS.)	1	
27	323048	RETAINING RING (E-TYPE) FOR D15 SHAFT	1	
28	339223	WASHER	1	
29	338740	LOW SPEED GEAR	1	
30	338741	HIGH SPEED GEAR	1	
31	338742	SHIFT ARM	1	
32	984104	PIN D5	1	
* 33		LABEL (SLIP CLUTCH)	1	FOR SLIP CLUTCH
34	608DDM	BALL BEARING 608DD	1	
* 35	361003B	ARMATURE 110V	1	
* 35	361003C	ARMATURE 120V-127V	1	
* 35	361003U	ARMATURE ASS'Y 120V	1	INCLUD.34,39,41
* 35	361003D	ARMATURE 220V	1	
* 35	361003E	ARMATURE 230V	1	
* 35	361003F	ARMATURE 240V	1	
36	338766	FAN GUIDE (B)	1	
37	338755	RUBBER BUSH	2	
* 38	340906B	STATOR 110V	1	
* 38	340906C	STATOR 120V-127V	1	
* 38	340906D	STATOR 220V	1	
* 38	340906E	STATOR 230V	1	
* 38	340906F	STATOR 240V	1	
39	338751	DUST SEAL	1	

PARTS

DV 20VD

ITEM NO.	CODE NO.	DESCRIPTION	NO. USED	REMARKS
40	338750	STATOR HOLDER	1	
41	607VVC	BALL BEARING 607VV	1	
42	931701	BEARING LOCK	1	
43	338749	HOUSING (B)	1	
44	338761	CLICK PLATE	2	
45	331759	BAND	2	
46	999088	CARBON BRUSH (1 PAIR)	2	
47	339292	SPRING	2	
48	338760	BRUSH COVER	1	
49	338753	HANDLE COVER (B)	1	
50		NAME PLATE	1	
51	301653	TAPPING SCREW (W/FLANGE) D4 X 20 (BLACK)	7	
52	338759	BRUSH HOLDER	1	
53	338752	HANDLE COVER (A)	1	
54	338758	INTERNAL WIRE L100	1	
55	338756	SWITCH	1	
56	338757	INTERNAL WIRE L180	1	
* 57	334379	FERRITE CORE	1	EXCEPT FOR SIN,MAL,UAE,USA,CAN,MEX
* 58	953327	CORD ARMOR D8.8	1	
* 58	938051	CORD ARMOR D10.1	1	
59	937631	CORD CLIP	1	
60	984750	TAPPING SCREW (W/FLANGE) D4 X 16	2	
* 61	997174	NOISE SUPPRESSOR	1	EXCEPT FOR SIN,MAL,UAE,USA,CAN,MEX
* 62	500409Z	CORD	1	(CORD ARMOR D8.8)
* 62	500434Z	CORD	1	(CORD ARMOR D8.8) FOR USA,CAN,MEX
* 62	500505Z	CORD	1	(CORD ARMOR D8.8) FOR MAL,UAE (230V), GBR (230V)
* 62	323974	CORD	1	(CORD ARMOR D10.1) FOR SIN,UAE (110V)
* 62	500439Z	CORD	1	(CORD ARMOR D8.8) FOR AUS,NZL
* 62	500461Z	CORD	1	(CORD ARMOR D8.8) FOR GBR (110V)
* 62	500468Z	CORD	1	(CORD ARMOR D8.8) FOR CHN

STANDARD ACCESSORIES

ITEM NO.	CODE NO.	DESCRIPTION	NO. USED	REMARKS
* 501	338762	CASE	1	
502	338768	SIDE HANDLE	1	
503	303709	DEPTH GAUGE	1	
* 504	402539	SYSTEM CASE 2	1	INCLUD.505-507
* 505	336472	LATCH	4	
* 506	336473	HANDLE	1	
* 507	336474	HINGE	2	
* 508	338763	INNER TRAY	1	