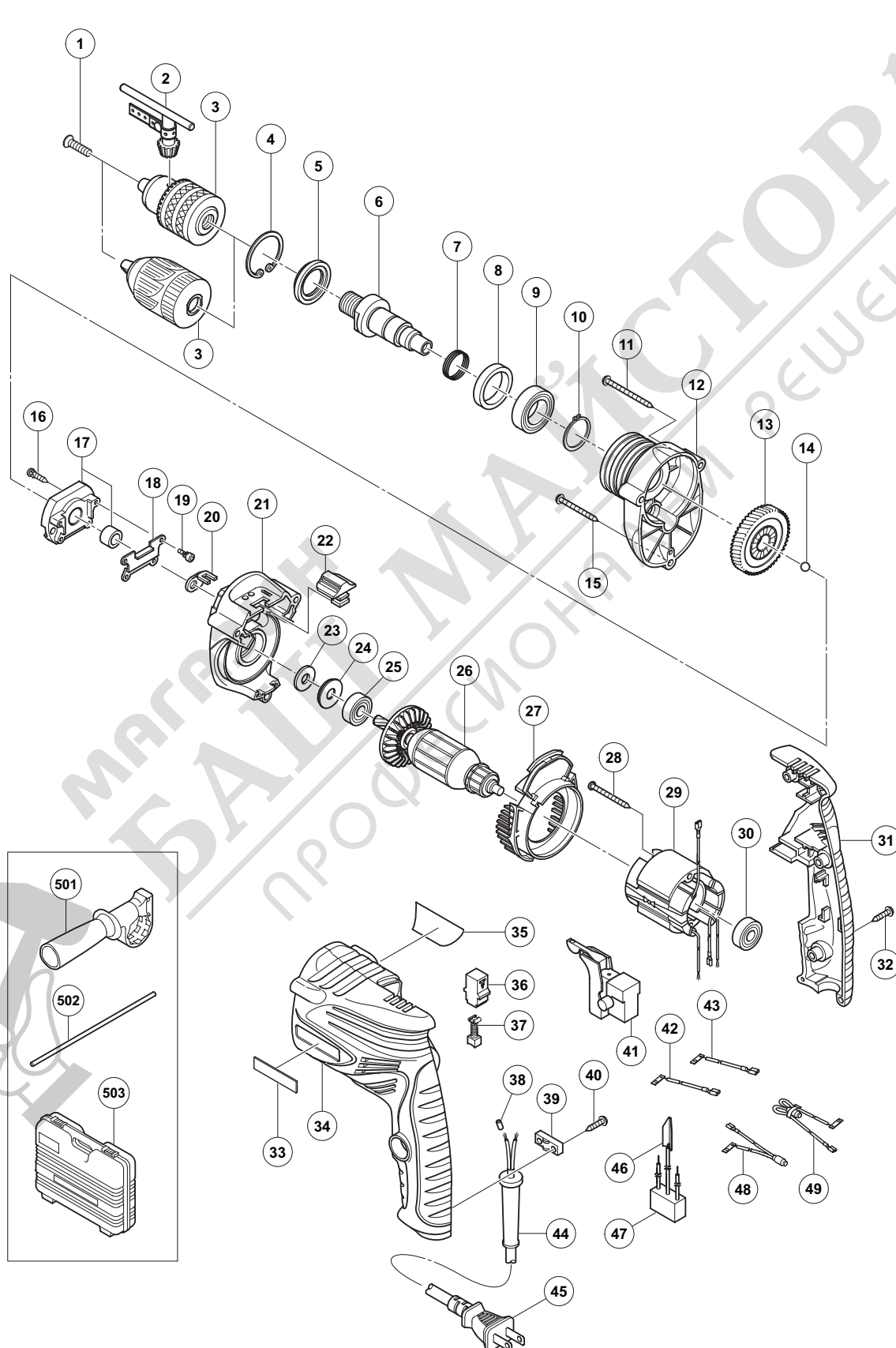


ELECTRIC TOOL PARTS LIST

IMPACT DRILL
Model DV 16VSS

2009·5·29
(E1)



PARTS

DV 16VSS

| ITEM NO. | CODE NO. | DESCRIPTION | NO. USED | REMARKS |
|----------|----------|------------------------------------------|----------|-----------------------------------------------------------|
| 1 | 995-344 | FLAT HD. SCREW (A) (LEFT HAND) M6 X 25 | 1 | |
| * 2 | 987-576 | CHUCK WRENCH FOR 13VLB-D,13VLR-D | 1 | |
| * 3 | | DRILL CHUCK 13VLRC-D | 1 | INCLUD. 2 SUPPLIED WITH ITEM NO. 601 |
| * 3 | 322-625 | DRILL CHUCK 13VLRJ-N (W/O CHUCK WRENCH) | 1 | |
| 4 | 948-001 | RETAINING RING FOR D32 HOLE | 1 | |
| 5 | 971-654 | DUST SEAL | 1 | |
| 6 | 331-522 | SPINDLE | 1 | |
| 7 | 322-514 | SPRING | 1 | |
| 8 | 330-682 | DISTANCE RING | 1 | |
| 9 | 600-2VV | BALL BEARING 6002VVCMP2L | 1 | |
| 10 | 939-544 | RETAINING RING FOR D15 SHAFT (10 PCS.) | 1 | |
| 11 | 322-657 | TAPPING SCREW (W/FLANGE) D4 X 60 (BLACK) | 2 | |
| 12 | 330-726 | GEAR COVER | 1 | |
| 13 | 330-683 | GEAR | 1 | |
| 14 | 959-150 | STEEL BALL D6.35 (10 PCS.) | 1 | |
| 15 | 301-815 | TAPPING SCREW (W/FLANGE) D4 X 45 | 1 | |
| 16 | 330-680 | TAPPING SCREW (W/SP. WASHER) D4 X 20 | 2 | |
| 17 | 330-677 | RATCHET | 1 | |
| 18 | 330-678 | BUSHING | 1 | |
| 19 | 330-679 | BOLT M3 | 4 | |
| 20 | 330-676 | CHANGE PLATE | 1 | |
| 21 | 330-675 | INNER COVER | 1 | |
| 22 | 322-510 | CHANGE LEVER | 1 | |
| 23 | 323-096 | FELT PACKING | 1 | |
| 24 | 330-674 | WASHER (A) | 1 | |
| 25 | 608-DDM | BALL BEARING 608DDC2PS2L | 1 | |
| * 26 | 360-863C | ARMATURE 110V | 1 | |
| * 26 | 360-863U | ARMATURE ASS'Y 120V | 1 | INCLUD. 25, 30 |
| * 26 | 360-863E | ARMATURE 220V | 1 | |
| * 26 | 360-863F | ARMATURE 230V-240V | 1 | |
| 27 | 330-673 | FAN GUIDE | 1 | |
| 28 | 950-515 | TAPPING SCREW D4 X 50 | 2 | |
| * 29 | 340-742C | STATOR 110V | 1 | |
| * 29 | 340-742D | STATOR 120V | 1 | |
| * 29 | 340-742F | STATOR 220V-240V | 1 | |
| 30 | 608-VVM | BALL BEARING 608VVC2PS2L | 1 | |
| 31 | 330-715 | HANDLE COVER | 1 | |
| 32 | 301-653 | TAPPING SCREW (W/FLANGE) D4 X 20 (BLACK) | 3 | |
| 33 | 330-719 | HITACHI LABEL | 1 | |
| 34 | 330-714 | HOUSING | 1 | |
| 35 | | NAME PLATE | 1 | |
| 36 | 955-203 | BRUSH HOLDER | 2 | |
| 37 | 999-041 | CARBON BRUSH (1 PAIR) | 2 | |
| * 38 | 981-373 | TUBE (D) | 2 | FOR CORD |
| 39 | 937-631 | CORD CLIP | 1 | |
| 40 | 984-750 | TAPPING SCREW (W/FLANGE) D4 X 16 | 2 | |
| * 41 | 330-716 | SWITCH | 1 | |
| * 41 | 330-684 | SWITCH | 1 | FOR GBR (110V), USA, CAN, MEX, VEN, TPE |
| * 42 | 330-717 | INTERNAL WIRE (BROWN) | 1 | FOR USA, CAN, VEN, TPE, SYR, INA, HKG, KUW, IND, THA, SIN |

