

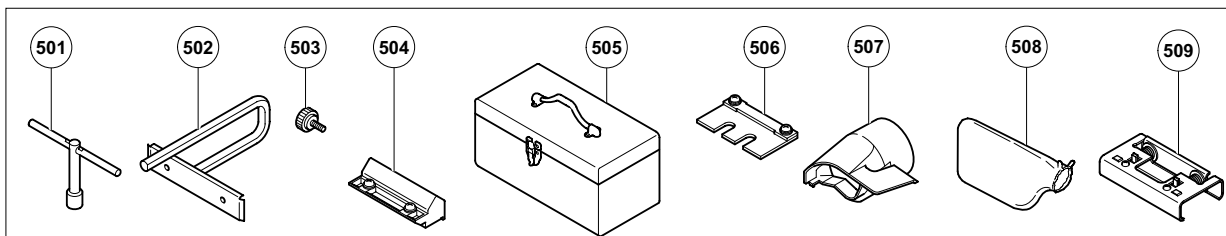
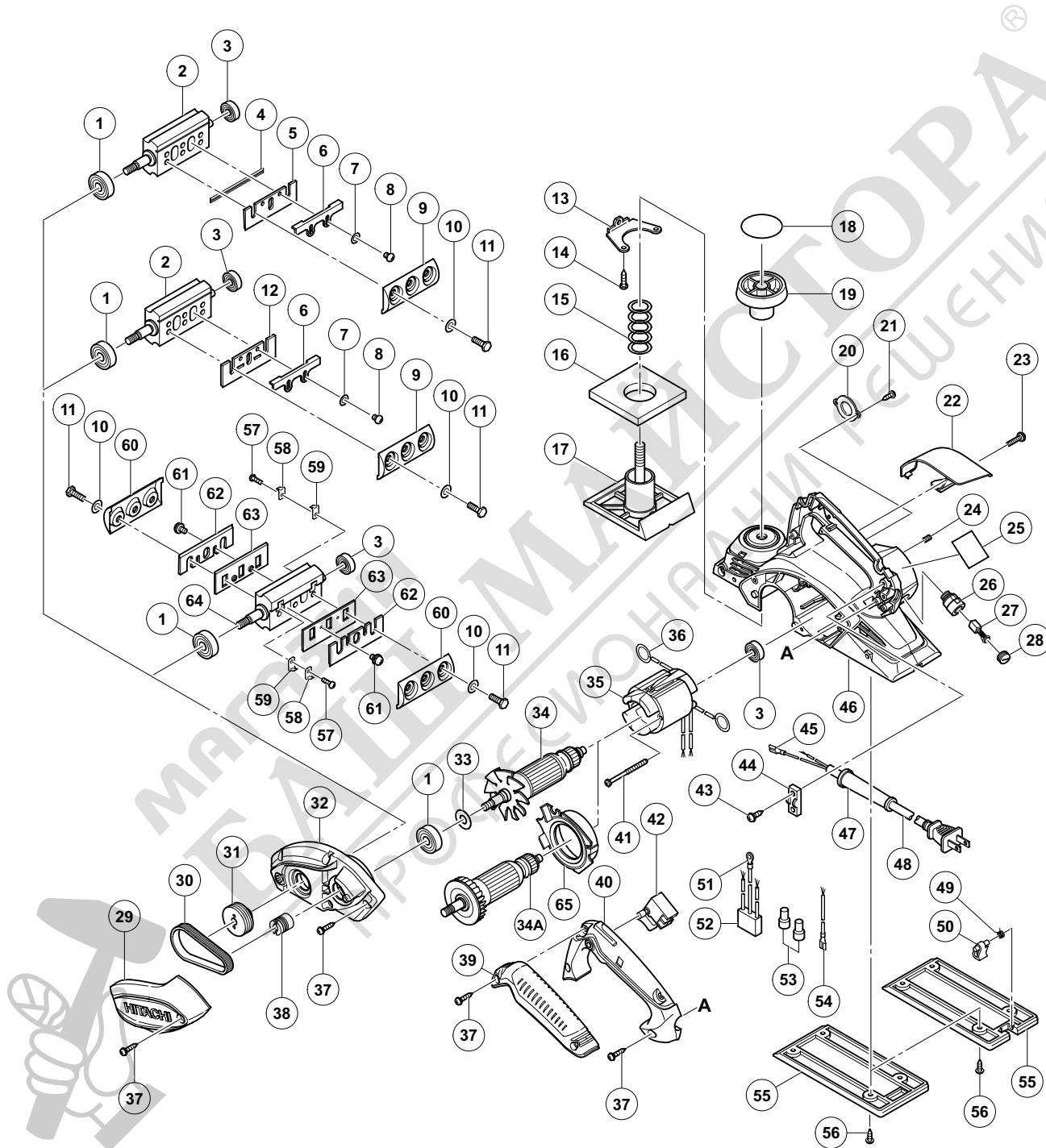
ELECTRIC TOOL PARTS LIST

■ PLANER

2012·10·15

Model P 20ST

(E2)



PARTS

P 20ST

| ITEM NO. | CODE NO. | DESCRIPTION | NO. USED | REMARKS |
|----------|----------|--|----------|---|
| 1 | 620-0VV | BALL BEARING 6200VVCMP2L | 2 | |
| * 2 | 334-480 | CUTTER BLOCK ASS'Y (W/B.B) | 1 | INCLUD. 1, 3 EXCEPT FOR IND |
| 3 | 608-VVM | BALL BEARING 608VVC2PS2L | 2 | |
| * 4 | 879-418 | PLANER BLADES (1 PAIR) | 2 | FOR DOUBLE EDGE BLADE TYPE |
| * 5 | 334-478 | SET PLATE (B) (1 PAIR) | 2 | FOR DOUBLE EDGE BLADE TYPE |
| * 6 | 314-754 | SET PLATE (A) | 2 | EXCEPT FOR IND |
| * 7 | 949-423 | WASHER M4 (10 PCS.) | 4 | EXCEPT FOR IND |
| * 8 | 949-213 | MACHINE SCREW M4 X 5 (10 PCS.) | 4 | EXCEPT FOR IND |
| * 9 | 316-398 | BLADE HOLDER (1 PAIR) | 2 | EXCEPT FOR IND |
| 10 | 334-706 | WASHER 65MN T0.5 | 6 | |
| 11 | 334-707 | BOLT M6 | 6 | |
| * 12 | 314-746 | PLANER BLADES 82 MM (1 PAIR) | 2 | EXCEPT FOR DOUBLE EDGE BLADE TYPE |
| 13 | 958-945 | SCREW PLATE | 1 | |
| 14 | 954-004 | TAPPING SCREW D4 X 16 | 1 | |
| 15 | 958-709 | SPRING | 1 | |
| 16 | 958-708 | RUBBER PACKING | 1 | |
| 17 | 334-738 | FRONT BASE | 1 | |
| 18 | | SCALE | 1 | |
| 19 | 942-328 | KNOB | 1 | |
| 20 | 334-492 | BEARING COVER | 1 | |
| 21 | 309-470 | TAPPING SCREW (W/FLANGE) D4 X 12 (BLACK) | 2 | |
| 22 | 334-501 | TIP COVER | 1 | |
| 23 | 333-163 | MACHINE SCREW (BLACK) M4 X 16 | 1 | |
| 24 | 938-477 | HEX. SOCKET SET SCREW M5 X 8 | 2 | |
| 25 | | NAME PLATE | 1 | |
| 26 | 957-571 | BRUSH HOLDER | 2 | |
| 27 | 999-021 | CARBON BRUSH (1 PAIR) | 2 | |
| 28 | 931-266 | BRUSH CAP | 2 | |
| 29 | 334-487 | BELT COVER | 1 | |
| 30 | 958-718 | BELT | 1 | |
| 31 | 334-491 | PULLEY (B) | 1 | |
| 32 | 334-716 | END BRACKET | 1 | |
| 33 | 334-713 | WASHER (A) | 1 | |
| * 34 | 360-942H | ARMATURE 110 V | 1 | |
| * 34 | 360-942U | ARMATURE ASS'Y 120 V | 1 | INCLUD. 1, 3 |
| * 34 | 360-942D | ARMATURE 127 V | 1 | |
| * 34 | 360-942G | ARMATURE 220 V | 1 | |
| * 34 | 360-942E | ARMATURE 230 V | 1 | |
| * 34 | 360-942F | ARMATURE 240 V | 1 | |
| * 34A | 360-936G | ARMATURE 220 V | 1 | FOR CHN |
| * 35 | 340-834C | STATOR ASS'Y 110 V | 1 | INCLUD. 36 |
| * 35 | 340-835C | STATOR ASS'Y 110 V-120 V | 1 | INCLUD. 36 FOR USA, CAN (120 V), SAU, UAE (110 V) |
| * 35 | 340-835D | STATOR ASS'Y 127 V | 1 | INCLUD. 36 |
| * 35 | 340-834E | STATOR ASS'Y 220 V-230 V | 1 | INCLUD. 36 |
| * 35 | 340-835E | STATOR ASS'Y 220 V-230 V | 1 | INCLUD. 36 FOR BRA (220 V), PAN (220 V), PHI, INA, SIN, HKG, IND, ISR, UAE (220 V-230 V) |
| * 35 | 340-834F | STATOR ASS'Y 240 V | 1 | INCLUD. 36 |
| * 35 | 340-835F | STATOR ASS'Y 240 V | 1 | INCLUD. 36 FOR MAL, UAE (240 V) |
| 36 | 931-867 | BRUSH TERMINAL | 2 | |
| 37 | 301-653 | TAPPING SCREW (W/FLANGE) D4 X 20 (BLACK) | 10 | |

PARTS

P 20ST

| ITEM NO. | CODE NO. | DESCRIPTION | NO. USED | REMARKS |
|----------|----------|--|----------------------------------|---|
| 38 | 334-490 | PULLEY (A) | 1 | |
| 39 | 334-717 | GRIP COVER | 1 | |
| 40 | 334-484 | HANDLE COVER | 1 | |
| 41 | 960-108 | HEX. HD. TAPPING SCREW D4 X 60 | 2 | |
| * | 42 | 334-474 | SWITCH | 1 W/OFF LOCK TYPE |
| * | 42 | 322-101 | SWITCH | 1 W/ON LOCK TYPE |
| 43 | 984-750 | TAPPING SCREW (W/FLANGE) D4 X 16 | 2 | |
| 44 | 937-631 | CORD CLIP | 1 | |
| 45 | 331-707 | FASTON | 1 | |
| * | 46 | 334-482 | HOUSING ASS'Y | 1 INCLUD. 13, 14, 24, 26 |
| * | 46 | 334-483 | HOUSING ASS'Y | 1 INCLUD. 13, 14, 24, 26 FOR USA, CAN |
| * | 47 | 938-051 | CORD ARMOR D10.1 | 1 |
| * | 47 | 953-327 | CORD ARMOR D8.8 | 1 |
| * | 48 | 500-409Z | CORD | 1 (CORD ARMOR D8.8) |
| * | 48 | 500-247Z | CORD | 1 (CORD ARMOR D8.8) FOR NOR SWE, DEN, FIN |
| * | 48 | 500-432Z | CORD | 1 (CORD ARMOR D8.8) FOR USA, CAN, MEX, PAN (120 V) |
| * | 48 | 500-231Z | CORD | 1 (CORD ARMOR D8.8) FOR SIN, MAL, UAE (230 V-240 V) |
| * | 48 | 500-201Z | CORD | 1 (CORD ARMOR D10.1) FOR SAU, UAE (110 V) |
| * | 48 | 500-455Z | CORD | 1 (CORD ARMOR D8.8) FOR CHN, PHI |
| * | 48 | 500-439Z | CORD | 1 (CORD ARMOR D8.8) FOR AUS, NZL |
| * | 48 | 500-435Z | CORD | 1 (CORD ARMOR D8.8) FOR GBR (230 V), HKG |
| * | 48 | 500-461Z | CORD | 1 (CORD ARMOR D8.8) FOR GBR (110 V) |
| * | 48 | 500-447Z | CORD | 1 (CORD ARMOR D8.8) FOR SUI |
| * | 48 | 500-487Z | CORD | 1 (CORD ARMOR D8.8) FOR BRA |
| * | 48 | 500-470Z | CORD | 1 (CORD ARMOR D8.8) FOR TPE |
| * | 48 | 500-234Z | CORD | 1 (CORD ARMOR D8.8) FOR KOR |
| * | 49 | 334-499 | STAND | 1 FOR USA, CAN |
| * | 50 | 334-500 | SPRING | 1 FOR USA, CAN |
| * | 51 | 961-419Z | TERMINAL | 1 FOR AUS, NZL, SAF, GBR, EUROPE, NOR, SWE, DEN, FIN, AUT, TUR, SUI, RUS, CHN, TPE, KOR |
| * | 52 | 334-472 | NOISE SUPPRESSOR | 1 FOR AUS, NZL, SAF, GBR, EUROPE, NOR, SWE, DEN, FIN, AUT, TUR, SUI, RUS, CHN, TPE, KOR |
| * | 53 | 959-140 | CONNECTOR 50091 (10 PCS.) | 1 |
| * | 53 | 959-141 | CONNECTOR 50092 (10 PCS.) | 2 FOR AUS, NZL, SAF, GBR, EUROPE, NOR, SWE, DEN, FIN, AUT, TUR, SUI, RUS, CHN, TPE, KOR |
| * | 54 | 331-269 | INTERNAL WIRE | 1 FOR AUS, NZL, SAF, GBR, EUROPE, NOR, SWE, DEN, FIN, AUT, TUR, SUI, RUS, CHN, TPE, KOR |
| * | 55 | 334-837 | REAR BASE | 1 EXCEPT FOR USA, CAN |
| * | 55 | 334-838 | REAR BASE | 1 FOR USA, CAN |
| 56 | 307-811 | TAPPING SCREW (W/FLANGE) D4 X 16 (BLACK) | 4 | |
| * | 57 | 949-216 | MACHINE SCREW M4 X 10 (10 PCS.) | 4 FOR IND |
| * | 58 | 958-731Z | HOLDER SPRING (B) | 4 FOR IND |
| * | 59 | 958-732Z | GUARD PLATE (A) | 4 FOR IND |
| * | 60 | 958-734Z | BLADE HOLDER (1 PAIR) | 2 FOR IND |
| * | 61 | 976-815 | MACHINE SCREW (W/WASHERS) M4 X 8 | 4 FOR IND |
| * | 62 | 958-728 | PLANER BLADES 82 MM (1 PAIR) | 2 FOR IND |
| * | 63 | 958-733Z | BACK METAL | 2 FOR IND |
| * | 64 | 334-481 | CUTTER BLOCK ASS'Y (W/B.B) | 1 INCLUD. 1, 3, 57-59 FOR IND |
| * | 65 | 334-493 | FAN GUIDE | 1 FOR CHN |

