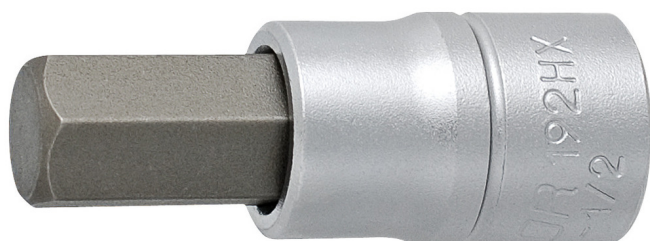


## Вложка 1/2", шестограм (inbus)

192/2HX



### Употреба

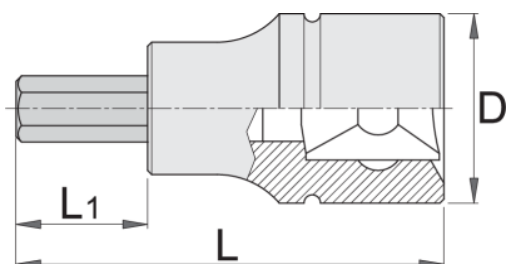


### Профили



### Параметри на продукта

- материал: вложка: хром-ванадиева, хромирана
- накрайник: специална инструментална стомана
- кована, изцяло закалена
- размери 17, 19, 22, 24 се използват за монтаж и демонтаж на предни колела
- изработена в съответствие със стандарт DIN 7422 (само за метрични размери)






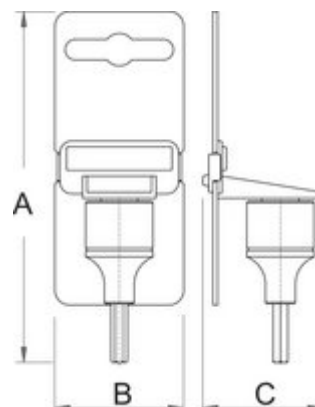
D

L

L1

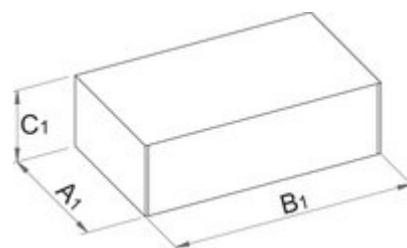


		D	L	L1	
600978	4	23	60	24	60
603420	5	23	60	24	60
603421	6	23	60	24	60
603422	7	23	60	24	75
603423	8	23	60	24	81
605923	9	23	60	24	85
603424	10	23	60	24	95
603425	12	23	60	24	116
624033	13	23	60	24	100
603426	14	23	60	24	168
624034	15	23	60	24	115
603427	17	24	60	20	187
603428	19	26.5	60	20	195
623141	22	26,5	60	20	196
623142	24	26,5	60	20	210
619894	3/16"	22.9	40	24	60
619895	7/32"	22.9	40	24	60
619896	1/4"	22.9	40	24	60
619899	3/8"	22.9	40	24	95
619900	1/2"	22.9	40	24	116
619901	9/16"	22.9	40	24	168
619902	5/8"	22.9	40	24	187
619904	3/4"	26.8	40	21	195






Опаковки на дребно

Barcode	MA	MB	MC	Weight
600978	130	44	43	65
603420	130	44	43	65
603421	130	44	43	65
603422	130	44	43	80
603423	130	44	43	86
605923	130	44	43	90
603424	130	44	43	100
603425	130	44	43	121
624033	130	44	43	125
603426	130	44	43	173
624034	130	44	43	175
603427	130	44	43	192
603428	130	44	43	200
623141	122	44	43	205
623142	122	44	43	220
619894	130	44	43	65
619895	130	44	43	65
619896	130	44	43	65
619899	130	44	43	100
619900	130	44	43	121
619901	130	44	43	173
619902	130	44	43	192
619904	130	44	43	200



## Транспортна опаковка

Barcode	Quantity	TA	TB	TC	Weight
600978	4	94	150	59	385
603420	4	94	150	59	385

		TA	TB	TC	
603421	4	94	150	59	385
603422	4	94	150	59	445
603423	4	94	150	59	469
605923	4	94	150	59	485
603424	4	94	150	59	525
603425	4	94	150	59	609
624033	4	49	150	59	545
603426	4	94	150	59	817
624034	4	49	150	59	800
603427	4	94	150	59	893
603428	4	94	150	59	925
623141	4	94	150	59	865
623142	4	10,4	16,8	61	935
619894	4	94	150	59	385
619895	4	94	150	59	385
619896	4	94	150	59	385
619899	4	94	150	59	525
619900	4	94	150	59	609
619901	4	94	150	59	817
619902	4	94	150	59	893
619904	4	104	168	61	925