



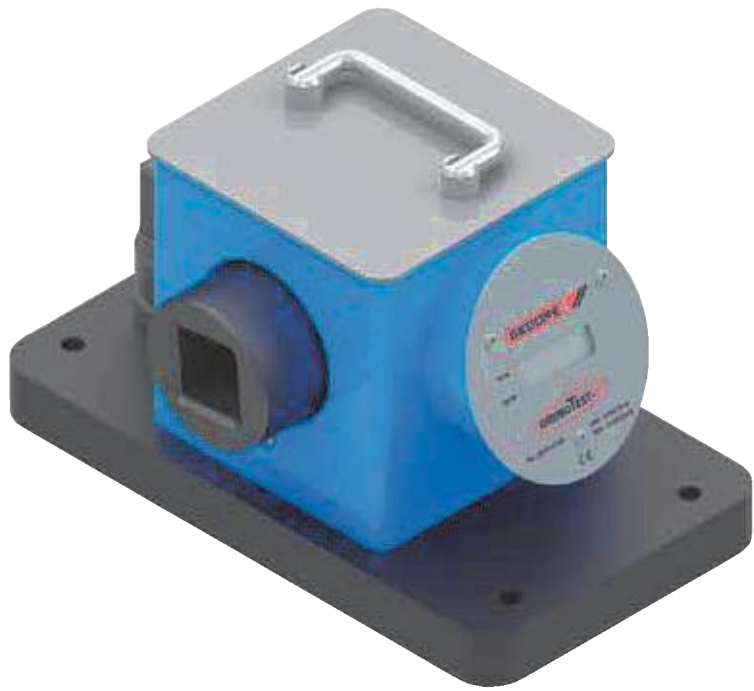
TORQUE CALIBRATION ANALYSERS


8612

ELECTRONIC TORQUE TESTER DREMOTEST E 0.2-3150 N·m / 1.8 lbf·in - 2323 lbf·ft

- For verifying and setting clockwise torque wrenches and torque screwdrivers in the range from 0.2 - 3150 N·m
- Simple, electronic torque tester with integrated torque transducer (DMS)
- With fixed hexagon female drive 1/4", 10, 17, 36, 46 mm or 1.1/2" square drive adaptor (model dependent)
- With 1/4", 3/8", 1/2", 3/4", 1" square drive adaptor or bit adaptor (model dependent)
- High measurement accuracy: +/- 1 % tolerance of reading, +/- 1 digit
- Break-Point-measurement (1st peak)
- Autoreset
- Can be switched from N·m to lbf·ft
- Serial interface RS232
- Optionally available: adaptor for cigarette lighter socket (12 V), no. 8612-390

± 1 %

N·m	lbf·in	lbf·ft	⬡	□	Resolution	Adaptor □		Code	No.
0,2-12	1,8-106		6.3		0,001	1/4", 3/8"	3.0	2288311	8612-012
0,9-55		0,7-40,6	10.0		0,01	1/4", 3/8"	3.0	1947699	8612-050
9-320		7-236	17.0		0,1	3/8", 1/2"	3.0	1856111	8612-300
90-1100		66-811	36.0		1	1/2", 3/4"	10.0	1947702	8612-1000
500-3150		369-2323		40	1	1"	26.0	2529858	8612-3150

Optional accessories:

Description		Code	No.
Adaptor for cigarette lighter socket	0.2	1878719	8612-390