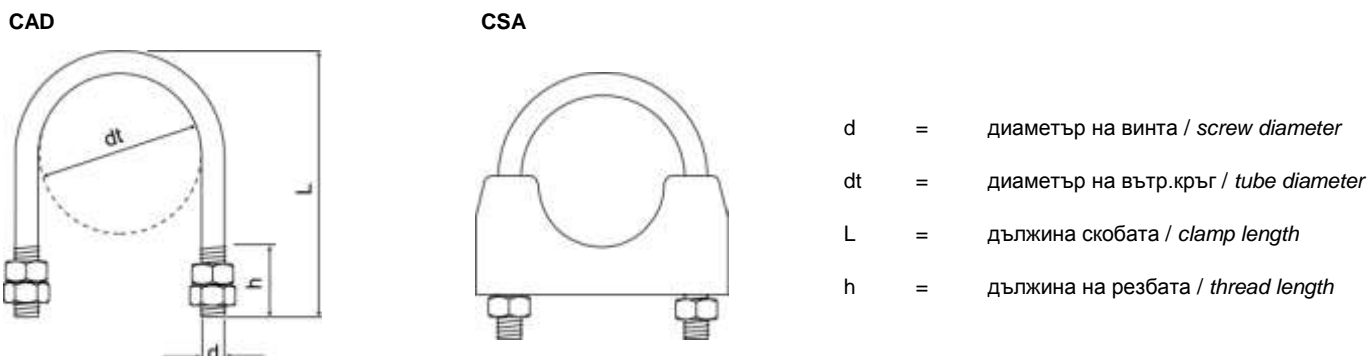


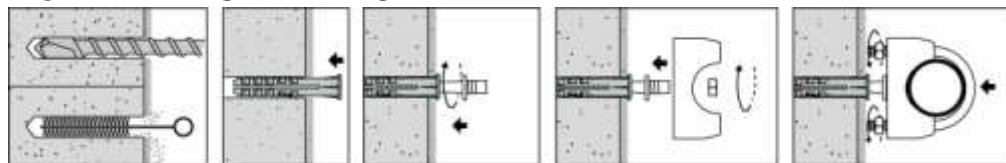
## ТЕХНИЧЕСКИ ДАННИ- TECHNICAL DATA



<b>CAD:</b> стоманена скоба / <i>steel clamp</i>					
dt инч / <i>inches</i>	dt mm	d mm	L mm	h mm	Код
3/8"	17,4	M6	38	15	50800b00003
1/2"	21,7	M6	42	15	50800b00004
3/4"	27,1	M6	48	15	50800b00005
1"	34	M6	59	20	50800b00006
1 1/4"	42,7	M6	68	20	50800b00007
1 1/2"	48,6	M8	81	25	50800b00008
2"	60,7	M8	93	25	50800b00009
2 1/2"	76,3	M8	108	25	50800b00011
3"	89,4	M8	121	25	50800b00012
4"	114,9	M8	146	25	50800b00014
5"	139,7	M8	172	25	50800b00016
6"	165,1	M8	197	25	50800b00017

<b>CSA:</b> стоманена скоба с държач / <i>steel clamp with bracket</i>					
dt инч / <i>inches</i>	dt mm	d mm	L mm	h mm	Код
1/2"	21,7	M6	42	15	50801b00002
3/4"	27,1	M6	48	15	50801b00003
1"	34	M6	59	20	50801b00004
1 1/4"	42,7	M6	68	20	50801b00005
1 1/2"	48,6	M8	81	25	50801b00006
2"	60,7	M8	93	25	50801b00007
2 1/2"	76,3	M8	108	25	50801b00009
3"	89,4	M8	121	25	50801b00010

## МОНТАЖ - INSTALLATION



## ХАРАКТЕРИСТИКА НА ПРОДУКТА - PRODUCT FEATURES

Тип <i>Type</i>	Материал <i>Material</i>	Покритие <i>Coating</i>
Скоба / Гайка <i>Clamp / Nut</i>	стомана <i>steel</i>	бяло цинкован $\geq 5\mu\text{m}$ ISO4042 <i>white zinc plated <math>\geq 5\mu\text{m}</math> ISO4042</i>
Държач <i>Bracket</i>	стомана <i>steel</i>	бяло цинкован $\geq 5\mu\text{m}$ ISO4042 <i>white zinc plated <math>\geq 5\mu\text{m}</math> ISO4042</i>