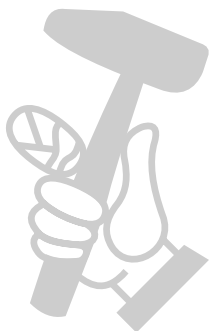


- S1 Control switch
- C1 Capacitor
- PE Earthing cable
- N Neutral line cable
- L1 Phase line conductor
- M1 Blade motor
- M2 Pump motor

14. Troubleshooting

⚠ CAUTION!!! All maintenance operations must be performed exclusively with the machine switched off, with the selector set to "0" and the power plug disconnected from the mains.

Problem	Cause	Remedy
Start button is pressed but motor does not start.	<ul style="list-style-type: none"> - No voltage on power line. - Socket and plug not fitted correctly. - Power cable from plug to panel is disconnected. - Electric wire loose inside motor terminal board. - Electric wire loose inside panel. - Start switch faulty. 	<ul style="list-style-type: none"> - Check power line. - Fit correctly. - Replace cable - Arrange repairs by electrician - Arrange repairs by electrician. - Change switch.
No delivery of cooling water to blade.	- Refer to "machine cleaning tank cleaning".	
Blade does not cut.	<ul style="list-style-type: none"> - Incorrect direction of blade rotation. - Blade worn. 	<ul style="list-style-type: none"> - Disassemble blade and reposition in the direction as shown on the blade label. - Fit new blade.

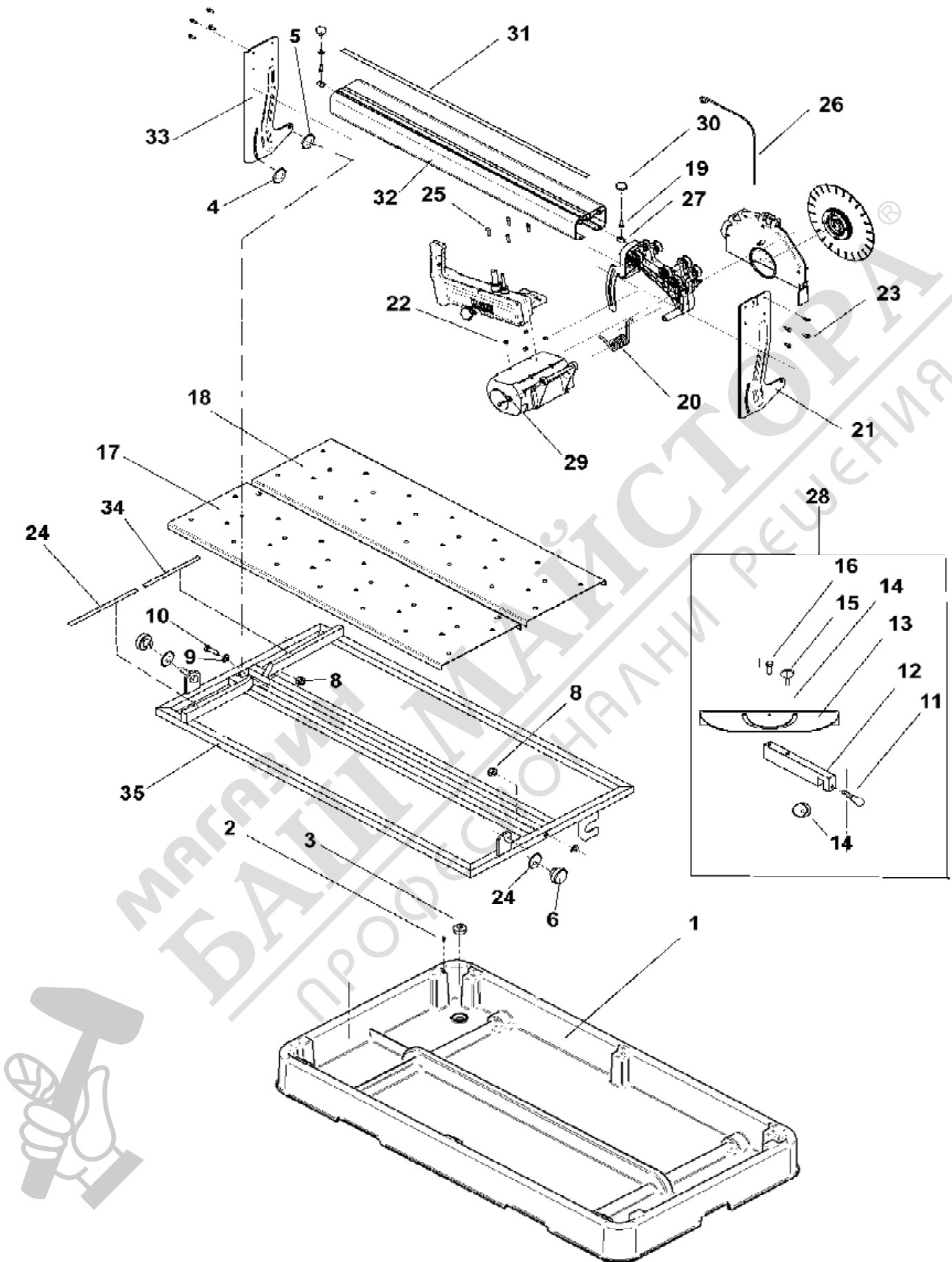


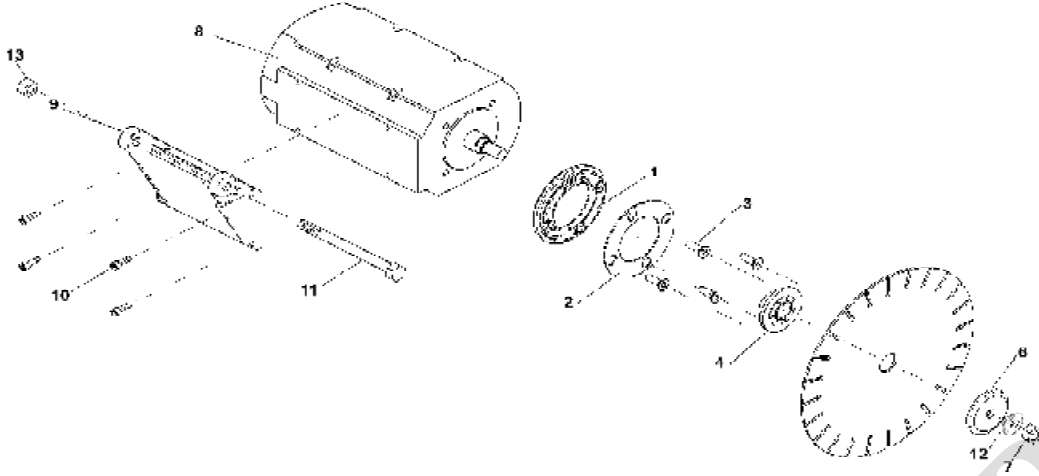
18. SPARE PARTS :All orders for spare parts must indicate the following: 1 - Type of machine.2 - Part number and position number of each part.3 - Serial number and year of manufacture reported on the machine's identification plate.

SYMBOL: Interchangeability (example):Pos..1 P.n. 2222002 was installed on machincs up to N° 5240 and Pos.1.1 P.n. 2222018 installed on machine N° 5241 onwards. Pos. 1.1 is interchangeable () with Pos. 1.Pos. 1 and Pos. 1.1 are not interchangeable if the () symbol appears in the table.

SPARE PARTS			NOTES
Ref.	Code		
1	2222002	SCREW	5240
2	2222018	SCREW	5241

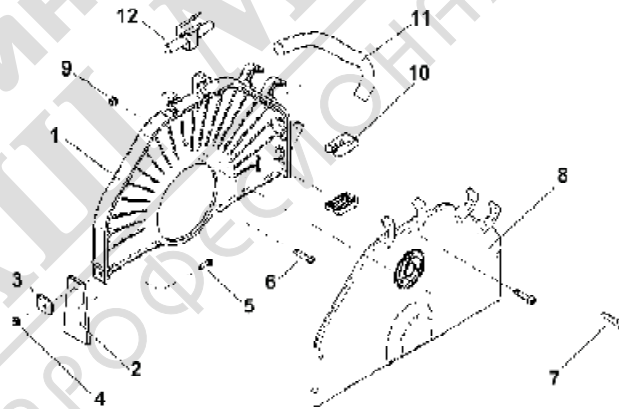
TAV. 1 MACHINE STRUCTURE -			
Ref.	Code	Description	
1	3210055	TANK	
2	2222449	SCREW	
3	2235430	CAP	
4	2224140	WASHER	6593 8x18
5	3207076	WASHER	NYLON 10,5x21x1
6	2284866	KNOB	M8
7	2222005	SCREW	5739 8x30
8	2223920	NUT	M10
9	2224140	WASHER	6593 10x21
10	2222098	SCREW	5739 10x40
11	3210625	KNOB	M8
12	3210064	GONIOMETER SUPPORT	
13	3208423	GONIOMETER	
14	3209332	CAM	
15	3206085	HANDWHEEL	M8
16	3208416	GONIOMETER PIN	
17	3210060	L.H. SURFACE	
18	3210061	R.H. SURFACE	
19	SCREW	BOLT	5739 6x16
20	3210087	SPRING	
21	3210097	FRONT ARM	
22	2223280	NUT	5588 M6
23	3210099	SCREW	
24	3210056	RIGHT FENCE ADHESIVE LABEL	
25	2225541	SCREW	5931 6x25
26	3210070	ROD	
27	3210071	SUPPORT	
28	3210063	GONIOMETER ASSEMBLY	
29	2224530	WASHER	6592 6x12,5
30	3204865	KNOB	M6
31	3210069	FENCE ADHESUVE LABEL	
32	3210068	SLIDEWAY	
33	3210073	REAR ARM	
34	3210057	LEFT FENCE ADHESIVE LABEL	
35	3210018	FRAME	





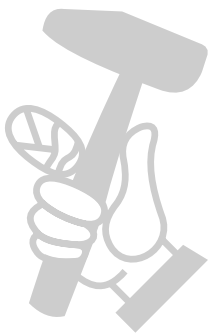
TAV. 2 ASSEMBLY OF MOTOR -

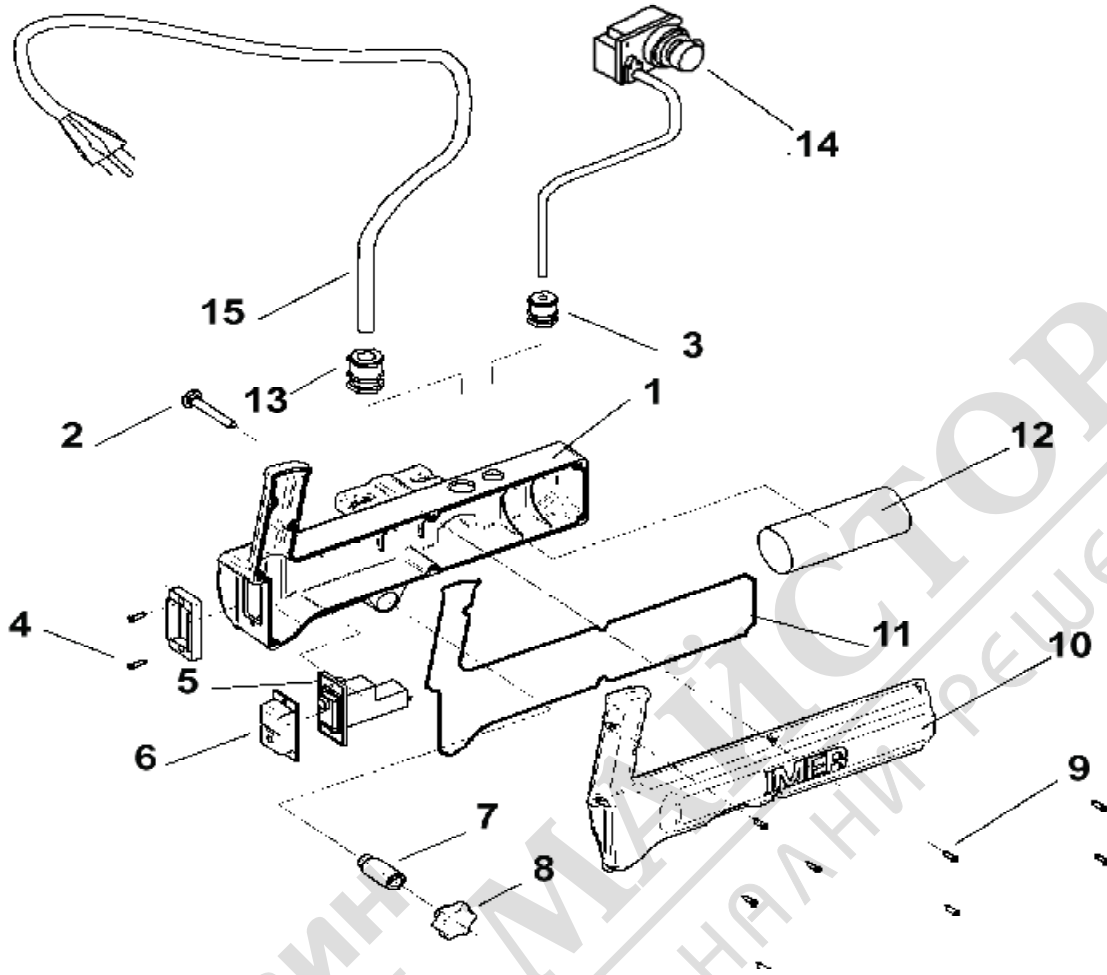
Ref.	Code	Description	Notes
1	3210042	COVER	
2	3210043	SPACER BRACKET	
3	3201339	SCREW	5933 M8x25
4	3210238	INNER FLANGE	
6	3210046	OUTER FLANGE	
7	3210053	NUT	M12 SX
8	3210218	MOTOR	115V-60Hz
9	3210038	ENGINE SUPPORT	
10	2222541	SCREW	5739 M6x16
11	3210637	SCREW	
12	2224380	WASHER	6593 12X25
13	2223920	NUT	M10



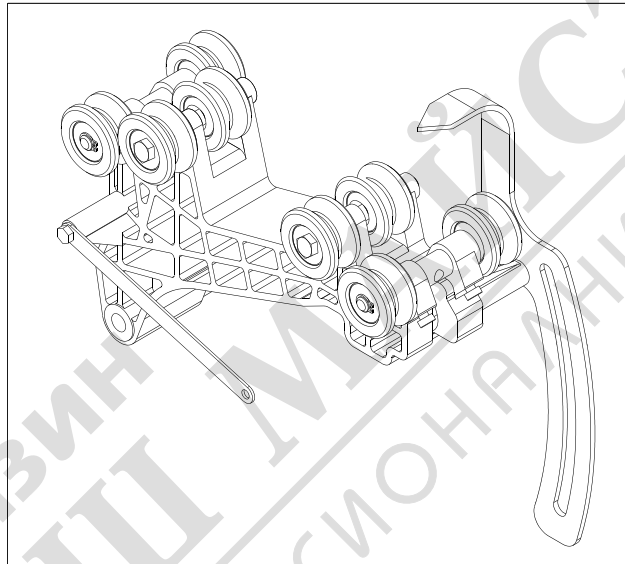
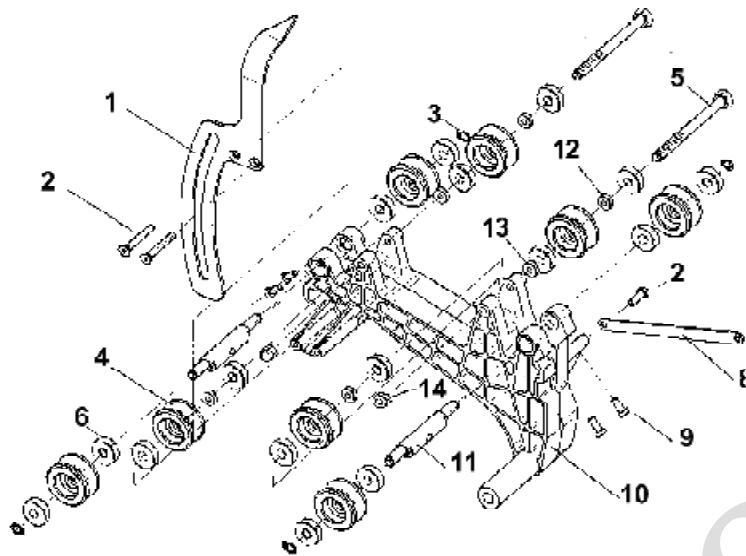
TAV. 3 - BLADE GUARD

Ref.	Code.	Description	Notes
1	3210041	BLADE GUARD	
2	3210050	SPRAY SHIELD	
3	2224535	WASHER	
4	2223926	NUT	AUTOBL. M4
5	2222001	SCREW	5739 M4x20
6	3209060	SCREW	5737 M6X35
7	3204399	SCREW	5931 M5x25
8	3210040	BLADE GUARD	
9	2223924	NUT	5588 M6
10	3210047	COOLANT HOSE	
11	2292365	TUBE	
12	3207884	COCK	

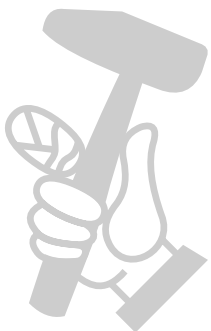


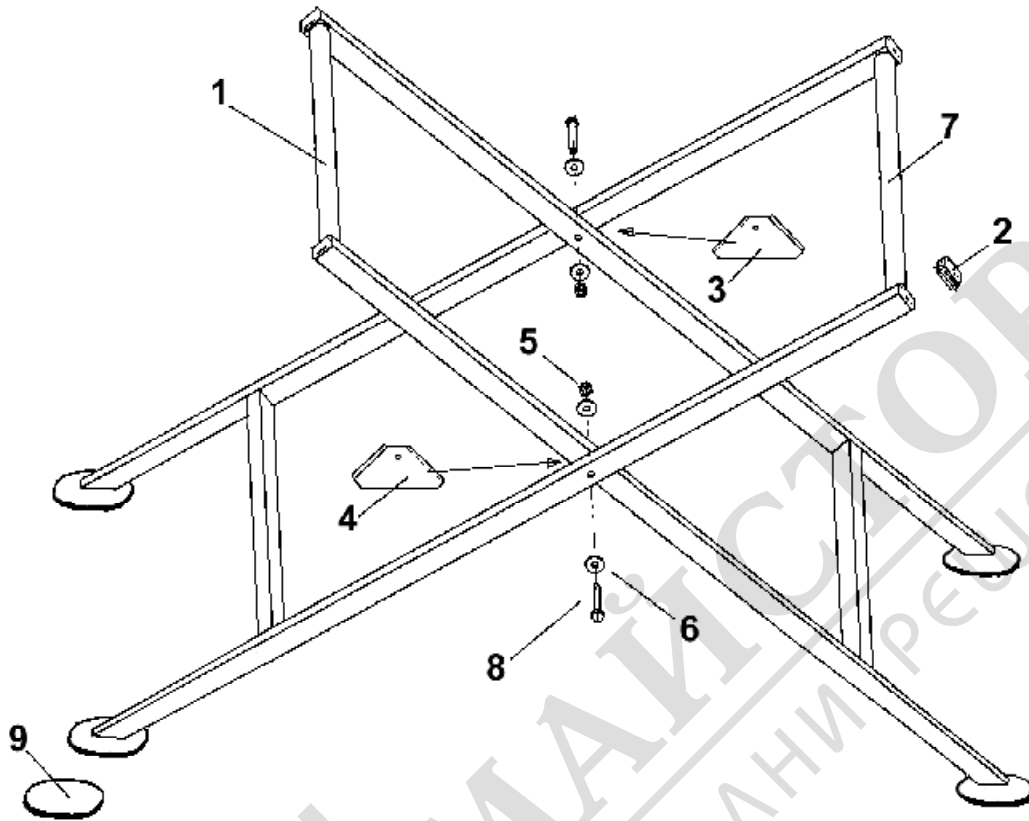


COD.3210216		TAV. 4 - ELECTRIC PANEL	
Ref.	Code	Description	Notes
1	3210230	JUNCTION BOX	
2	3210096	SCREW	5732 M8X60
3	3210112	CABLE CLAMP	
4	3210120	SCREW	
5	3210233	SWITCH	115V
6	3209340	LEAKAGE PROTECTION	
7	3210089	TUBE	
8	2284866	HANDWHEEL	M8
9	2222460	SCREW	
10	3210231	COVER	
11	3210111	GASKET	
12	3210232	CAPACITOR	115V
13	3210113	CABLE CLAMP	
14	3210524	WATER PUMP	115V
15	3209065	PLUG+ELECTRIC CABLE	115V



COD.3210025		TAV. 5 - CARRIAGE	
Ref.	Code	Description	Notes
1	3210028	CARRIAGE BLOCK	
2	3210105	SCREW	
3	3210627	RING	
4	3207397	WHEEL ASSEMBLY	
5	2222114	SCREW	
6	3204945	BEARING	608 2RS1
8	3210029	BLADE GUARD	
9	3210036	SCREW	TCEI SX16
10	3210031	CARRIAGE	
11	3210032	CAM	
12	3207393	SPACER BRACKET	
13	3210622	SPACER BRACKET	
14	2223920	NUT	M10





COD.3210080		TAV 6 - TRESTLE ELEMENT	
Ref.	Code	Description	Notes
1	3210645	INTERNAL TRESTLE ELEMENT	
2	3206205	TERMINAL	
3	3207193	RIGHT RABBET	
4	3207194	LEFT RABBET	
5	2223924	NUT	AUTOBL. M8
6	2224204	WASHER	6593 8x24
7	3210641	EXTERNAL TRESTLE ELEMENT	
8	1222030	SCREW	5737 8x60
9	3210646	RUBBER COATING	

