



DAEWOO

POWER PRODUCTS

DALPS18-1

Lithium pole saw



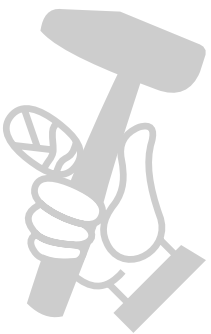
USER'S MANUAL

www.daewoopowerproducts.com

Manufactured under license of Daewoo International Corporation, Korea

INDEX

1. GENERAL OPERATING INSTRUCTIONS	3
2. GENERAL SAFETY INSTRUCTIONS	4
3. ASSEMBLY	9
4. TECHNICAL SPECIFICATIONS	16
5. EXPLODED VIEW AND SPARE PART LIST	17
WARRANTY	20



МАГАЗИН
БАШ МАЙСТОРА[®]
ПРОФЕСИОНАЛНИ РЕШЕНИЯ

1. GENERAL OPERATING INSTRUCTIONS

Read and keep the general operating instructions

These operating instructions belong to this cordless pole pruner (hereinafter also referred to as "device"). It contains important information on commissioning and operation.

Read the operating instructions carefully, especially the safety instructions, before using the device.

Failure to follow these operating instructions can result in serious injury or damage to the device.

The operating instructions are based on the standards and rules applicable in the European Union.

When abroad, also observe country-specific guidelines and laws.

Keep the operating instructions for future reference. If you pass the device on to third parties, be sure to include these operating instructions.

Intended use

The device is intended for delimiting and pruning higher bushes, shrubs and hedges up to a maximum branch diameter of 12 cm. For safety reasons, the device must always be adequately controlled by using it with both hands.

The device may only be used for cutting wood.

Do not use the device for purposes other than those listed above. The device must not be used for professional tree maintenance work.

WARNING

Safety rules must be followed when using this chainsaw.

- For your own safety and that of others, read these instructions before using the chainsaw.
- You should attend a professionally organized safety course on the use, preventive measures, first aid and maintenance of the chainsaw.
- Please keep the instructions for future reference.








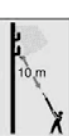


Risk of injury!

- Chainsaws are potentially dangerous tools. Chainsaw accidents often result in limb loss or death.
- It's not just the chainsaw that's dangerous. Falling branches, falling trees, rolling tree trunks can kill. Sick or rotten wood is another hazard.
- You should assess your abilities to cope with the task safely. If you have any concerns, leave the job to a professional arborist.

The manufacturer cannot be held responsible for damage if the provisions, from the generally applicable regulations and the provisions from this manual are not observed.

Explanation of symbols

The following symbols are used in these operating instructions, on the device or on the packaging.

	Observe caution and safety notes!		Wear protective gloves.		Wear a safety helmet.		Do not expose to the rain.
	Read the instruction manual.		Wear safety shoes.		Wear hearing protection.		Risk of electric shock! Maintain a distance of at least 10 m from live cables.
	Wear protective glasses.		Remove the replaceable battery before all adjustment, cleaning and maintenance work on the device.				

1. GENERAL SAFETY INSTRUCTIONS

WARNING: Read all safety notices, instructions, illustrations and technical data with which this power tool is provided.

Failure to follow the instructions below could result in electric shock, fire and / or serious injury.

Retain all safety notices and instructions for future use.

The term "power tool" used in the safety instructions refers to mains-operated power tools (with a power cord) or to battery-operated power tools (without a power cord).

Job security

- Keep your work area clean and well-lit. Cluttered or unlit work areas can lead to accidents.
- Do not work with the power tool in an explosive environment in which there are flammable liquids, gases or dust. Power tools generate sparks that can ignite the dust or fumes.
- Keep children and other people away while using the power tool. You can lose control of the power tool if you are distracted.

Electric security

- The power tool connector must match the socket. The plug must not be modified in any way. Do not use adapter plugs with protective earthed power tools. Unmodified plugs and matching sockets reduce the risk of electric shock.
- Avoid body contact with earthed surfaces such as pipes, heaters, stoves and refrigerators. There is an increased risk of electric shock if your body is grounded.
- Keep power tools away from rain or moisture. Water getting into a power tool increases the risk of electric shock.

Personal safety

- Be attentive, pay attention to what you are doing, and use common sense when working with a power tool. Do not use a power tool when you are tired or under the influence of drugs, alcohol or medication. A moment of inattention while using the power tool can result in serious injury.
- Wear personal protective equipment and always protective goggles. Wearing personal protective equipment, such as dust mask, non-slip Safety shoes, hard hats or hearing protection, depending on the type and use of the power tool, reduce the risk of injuries.
- Avoid unintentional start-up. Make sure that the power tool is switched off before you connect it to the power supply and / or the battery, pick it up or carry it. Accidents can occur if you have your finger on the switch while carrying the power tool or if you connect the power tool to the power supply when it is switched on.
- Remove adjustment tools or wrenches before switching on the power tool. A tool or wrench in a rotating part of the power tool could cause injury.
- Avoid abnormal posture. Make sure you have a secure stance and keep your balance at all times. This gives you better control of the power tool in unexpected situations.
- Wear suitable clothing. Do not wear loose clothing or jewelry. Keep hair and clothing away from moving parts. Loose clothing, jewelry or long hair can be caught in moving parts.
- If dust extraction and collection devices can be installed, these must be connected and used correctly. Using a Dust extraction can reduce dust hazards.
- Do not lull yourself into a false sense of security and do not disregard the safety rules for power tools, even if you are familiar with the power tool after having used it many times. Careless action can lead to serious injuries within a fraction of a second.

Use and treatment of the power tool

- Do not overload the power tool. Use the power tool designed for your work. With the right power tool you can work better and more safely in the specified performance range.
 - Do not use a power tool with a defective switch. A Power tools that can no longer be switched on or off are dangerous and must be repaired.
 - Pull the plug out of the socket and / or remove a detachable battery before making device settings, changing tool parts or putting the power tool away. This precaution prevents the accidental start of the Power tool.
 - Keep unused power tools out of the reach of children. Do not allow people to use the power tool who are not familiar with it or who have not read these instructions. Power tools are dangerous when used by inexperienced people.
- Maintain power tools and tool bits with care. Check whether moving parts are working properly and are not jamming, whether parts are broken or damaged in such a way that the function of the power tool is impaired. Have damaged parts repaired before using the power tool. Many accidents are caused by poorly maintained power tools.
- Keep cutting tools sharp and clean. Carefully manicured Cutting tools with sharp cutting edges jam less and are easier to guide.
 - Use the power tool, tool bits, tool bits etc. in accordance with these instructions. Take into account the working conditions and the work to be performed. The use of power tools for purposes other than those for which they are intended can lead to dangerous situations.
 - Keep handles and gripping surfaces dry, clean and free from oil and grease. Slippery handles and gripping surfaces do not allow safe operation and Checking the power tool in unforeseen situations.

Use and treatment of the lithium tool

- Only charge the batteries with chargers recommended by the manufacturer. A charger designed for one type of battery may present a fire hazard if used with other batteries.
- Only use the rechargeable batteries provided for this purpose in the power tools. The use of other batteries can lead to injuries and the risk of fire.
- When the battery is not in use, keep it away from paper clips, coins, keys, nails, screws or other small metal objects that could cause the contacts to be bridged. A short circuit between the battery contacts can result in burns or fire.
- If used incorrectly, liquid can leak from the battery. Avoid contact with it. In case of accidental contact with water, rinse. If the liquid gets into your eyes, get additional medical help. Leaking battery fluid can lead to Cause skin irritation or burns.
- Do not use a damaged or modified battery. Damaged or modified batteries can behave unpredictably and lead to fire, explosion or risk of injury.
- Do not expose a battery to fire or to high temperatures; fire or temperatures above 130 ° C can cause an explosion. Follow all charging instructions and never charge the battery or the cordless tool outside of the temperature range specified in the operating instructions. Incorrect charging or charging outside the permitted temperature range can destroy the battery and increase the risk of fire.

Service

- Have your power tool repaired only by qualified specialists and only with original spare parts. This ensures that the safety of the power tool is maintained.
- Never service damaged batteries. All maintenance of batteries should only be carried out by the manufacturer or authorized customer service centers. Safety instructions for chainsaws
- When the saw is running, keep all parts of your body away from the saw chain. Before starting the saw, make sure that the saw chain is not touching anything. When working with a chainsaw, a moment of inattention can result in clothing or parts of the body being caught in the saw chain.
- Always hold the chainsaw with your right hand on the rear handle and your left hand on the front

handle. Holding the chainsaw in the reverse working position increases the risk of injury and must not be used.

- The power tool may only be held by the insulated gripping surfaces, as the saw chain can touch hidden cables. Saw chains that come into contact with a live wire make metal parts of the power tool live and could give the operator an electric shock.
- Wear protective goggles and hearing protection. Further protective equipment for the head, hands, legs and feet is recommended. Appropriate protective clothing reduces the risk of injury from flying chips and accidental contact with the saw chain.
- Do not work with the chainsaw on a tree. There is a risk of injury when using a chainsaw in a tree.
- Always make sure you have a firm footing and only use the chainsaw when you are standing on firm, safe and level ground. Slippery surfaces or unstable surfaces, such as on a ladder, can lead to loss of balance or loss of control of the chainsaw.
- When cutting a branch that is under tension, expect it to spring back. When the tension in the wood fibers is released, the taut branch can hit the operator and wrest control of the chainsaw away from them.
- Be especially careful when cutting undergrowth and young trees. The thin material can get caught in the saw chain and hit you or throw you off balance.
- Carry the power tool with two hands using the additional handle when it is switched off, with the saw chain facing away from your body. Always pull on the protective cover when transporting or storing the power tool. Careful handling of the chainsaw reduces the likelihood of accidental contact with the running saw chain.
- Follow the instructions for lubrication, chain tension and changing accessories. An improperly tensioned or lubricated chain can either break or increase the risk of kickback. - Keep handles dry, clean and free from oil and grease. Greasy, oily handles are slippery and lead to loss of control.
- Only saw wood. Do not use the chainsaw for any work for which it is not intended - Example: Do not use the chainsaw to saw metal, plastic, masonry or non-wood construction materials. Using the chainsaw for work that is not in accordance with its intended purpose can lead to dangerous situations.
- Follow all instructions for removing jammed material, storing, or servicing the power tool. Make sure the power switch is turned off and the battery is removed. Unexpected operation of the power tool when removing jammed material or during maintenance work can result in serious injuries.

Causes and avoidance of a setback

Kickback can occur if the tip of the sword hits an object, or if the wood bends and jams the saw chain in the cut.

Contact with the tip of the sword can in some cases lead to an unexpected rearward-facing reaction, in which the sword is flicked upwards and towards the operator.

The jamming of the saw chain on the upper edge of the sword can quickly push the bar back in the direction of the operator.

Any of these reactions can cause you to lose control of the saw and potentially cause serious injury.

Do not rely solely on the safety devices built into the chainsaw. As a chain saw user, you should take various measures to ensure that you can work without accidents or injuries. Kickback is the result of incorrect or incorrect use of the power tool. It can be prevented by taking suitable precautionary measures as described below:

- Hold the saw firmly with both hands, with your thumb and fingers around the chainsaw handles. Bring your body and arms in a position where you can withstand the kickback forces. If appropriate measures are taken, the operator can control the kickback forces. Never let go of the chainsaw.
- Avoid abnormal posture. Make sure you have a secure stance and keep your balance at all times. This prevents accidental contact with the tip of the sword and enables better control of the chainsaw in unexpected situations.

- Always use replacement bars and saw chains prescribed by the manufacturer. Incorrect replacement bars and saw chains can cause the chain to tear and / or kickback.
- Follow the manufacturer's instructions for sharpening and maintaining the saw chain. Depth gauges that are too low increase the tendency to kickback.

Further safety instructions for chainsaws

In some regions, regulations may restrict the use of this machine. Consult your local authority. Never allow children or anyone unfamiliar with these instructions to use this machine. Local legislation regulates the minimum age of the user.

Do not wear baggy clothes, short pants or any jewelry. Make sure that all controls and safety devices are working properly. Do not use the machine if the "Off" switch does not stop the motor. Tie back long hair so it is above shoulder height to prevent it from getting caught in moving parts. Do not use in poor lighting. The user needs an unobstructed view of the work area in order to recognize possible dangers.

Watch out for thrown or falling objects. Keep bystanders (especially children and animals) at least 15m away from the work area.

Wearing hearing protection reduces your ability to hear warnings (Warnings or calls). The user must pay special attention to what is happening in the work area.

Having similar tools in the vicinity increases the risk of hearing loss and the likelihood of other people entering your work area.

Always keep your balance. Do not adopt an abnormal posture. Overstretching can lead to a loss of balance and increase the risk of kickback.

Keep all body parts away from moving parts.

Inspect the machine before use. Check all controls, including the chain brake, for proper operation. Check for loose fasteners, make sure all guards and handles are properly and securely attached.

Replace any damaged parts before use.

Do not modify the machine in any way or use parts or accessories that are not recommended by the manufacturer.

WARNING: Risk of damage!

If the machine has been dropped, received a severe shock, or vibrates abnormally, stop the machine immediately and inspect it for damage or identify the source of the vibration.

- Any damage must be done by a customer service center properly repaired or replaced. Further safety and work instructions.

Electric shock!

- Keep the device at least 10 m away from high-voltage lines, electric cables and electric fences.
- Do not use the device in bad weather conditions, especially if there is a risk of lightning. Make sure that all guards, handles, and claw stops are properly attached and in good condition.

It is strictly forbidden to dismantle or modify the safety devices on the machine or to alienate them from the intended purpose or to attach third-party safety devices.

The on / off switch and the safety switch must not be locked.

Security

People who use the chainsaw should be in good health. The chainsaw is a heavy device, so the user should be physically fit.

The user should be attentive, have good eyesight, agility, balance and manual skills. If in any doubt, do not use the chainsaw.

Do not start using the machine until you have a clean workplace, secure footing and a path to

retreat away from the falling branch.

Before starting the chainsaw, make sure that no objects are touching the saw chain.

Do not modify your chainsaw in any way.

A first aid kit with bandages for large wounds and a means of calling for help (e.g. a whistle) should be with the user. A larger, more extensive first aid kit should be nearby. An improperly tensioned chain can jump off the sword and cause serious injury or death. The length of the chain depends on the temperature. Check the chain tension regularly. To reduce the risk of moving parts, always stop the engine, remove the battery, and ensure that all moving parts have stopped before:

- Clean the chainsaw or remove a blockage
- Leave the chainsaw unattended -Mount or remove add- on parts.
- Check, maintain or work on the machine

Don't make back and forth motions while sawing; let the chain do the work. Keep the chain sharp and do not try to push the chain through the cut.

Do not put pressure on the saw at the end of the cut. Be ready to relieve the saw when it has cut through the wood. Failure to do so can result in serious injury.

Do not stop the saw during the sawing process.

Let the saw run until it finishes the saw cut.

Do not clamp the on / off switch in hand-held operation.

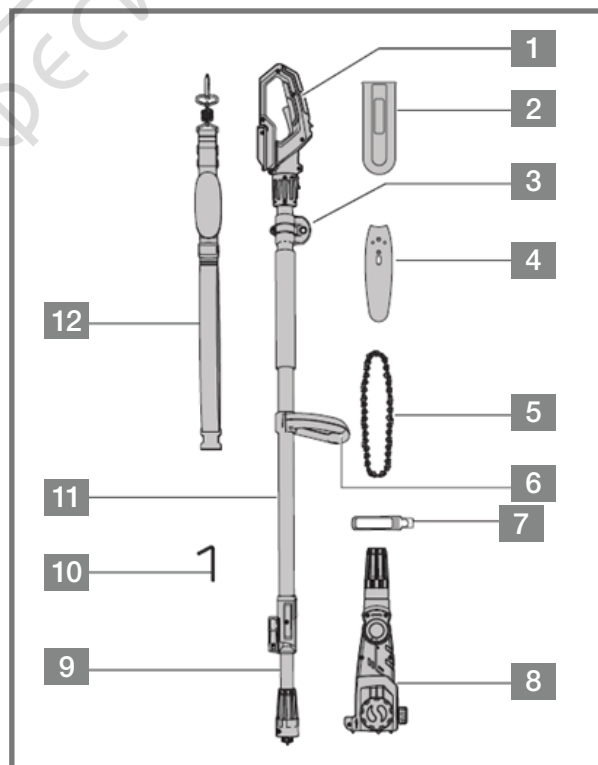
The wood to be cut must not be wet, but must have its natural moisture.

Remove the replaceable battery before starting any work on the device.

WARNING: Risk of short circuit!

- To avoid the risk of fire, injury or product damage caused by a short circuit, do not immerse the tool, the replaceable battery or the charger in liquids and ensure that no liquids get into the devices and batteries.
- Corrosive or conductive liquids, such as salt water, certain chemicals and bleach, or products that contain bleach can cause a short circuit.
- Charge the system's exchangeable batteries only with the system's chargers.
- Do not open exchangeable batteries and chargers and only store them in dry rooms. Protect from moisture.

1. Handle
2. Protective cover
- 3 Attachment eyelet shoulder strap
4. sword
5. Saw chain
6. Additional handle
7. Divinol organic chain oil R
8. Saw chain head
9. Telescopic tube
10. Allen key (not included)
11. pipe
12. Shoulder strap



3. ASSEMBLY

Assembly of chain and sword. Risk of injury!

If parts are missing or damaged, the device must not be operated until everything has been correctly replaced. Failure to heed this warning could result in serious personal injury.

- Make sure that the battery pack is removed from the device.

WARNING: The saw chain is sharp.

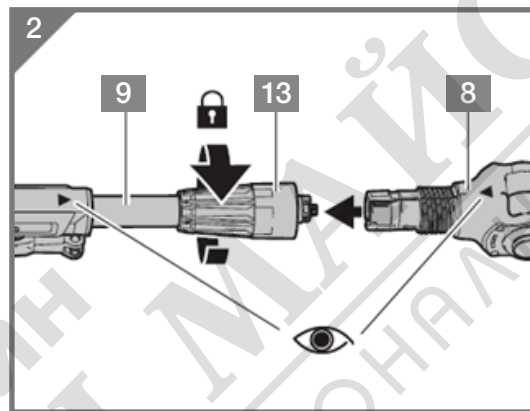
- Always wear protective gloves when servicing the chain.

Mount the saw chain head

1. Insert the saw chain head 8 into the holder provided on the telescopic tube 9.

Make sure that the saw chain head is correctly positioned in relation to the handle. The two arrows on the saw chain head and the Rohr must face each other.

2. Tighten the screw sleeve 13 clockwise to tighten the To attach the saw chain head to the telescopic tube, The saw chain head is mounted.



Mount the saw chain

1. Unscrew the chain tensioner 16 counterclockwise.

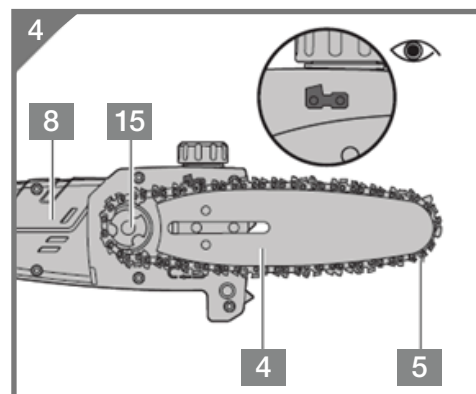
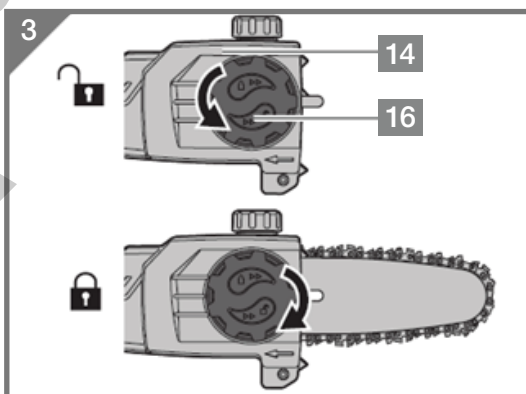
2. Remove the sprocket cover 14.

3. Place the saw chain 5 in the groove of the bar 4 so that the alignment of the chain links corresponds to the direction of rotation symbol printed on the device.

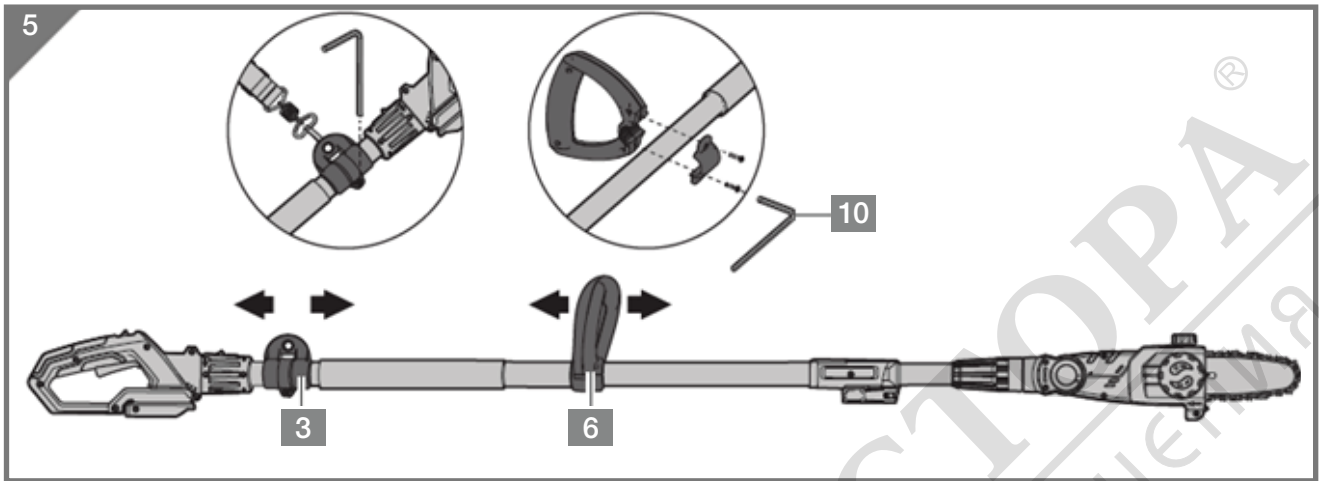
4. Place the sword on the saw chain head 8 and place the saw chain around the chain sprocket 15.

5. Put on the sprocket cover, pull the bar forwards and screw the chain tensioner clockwise until the chain sprocket cover is completely in contact with the bar.

6. Place the protective cover 2 on the sword. The saw chain is installed.

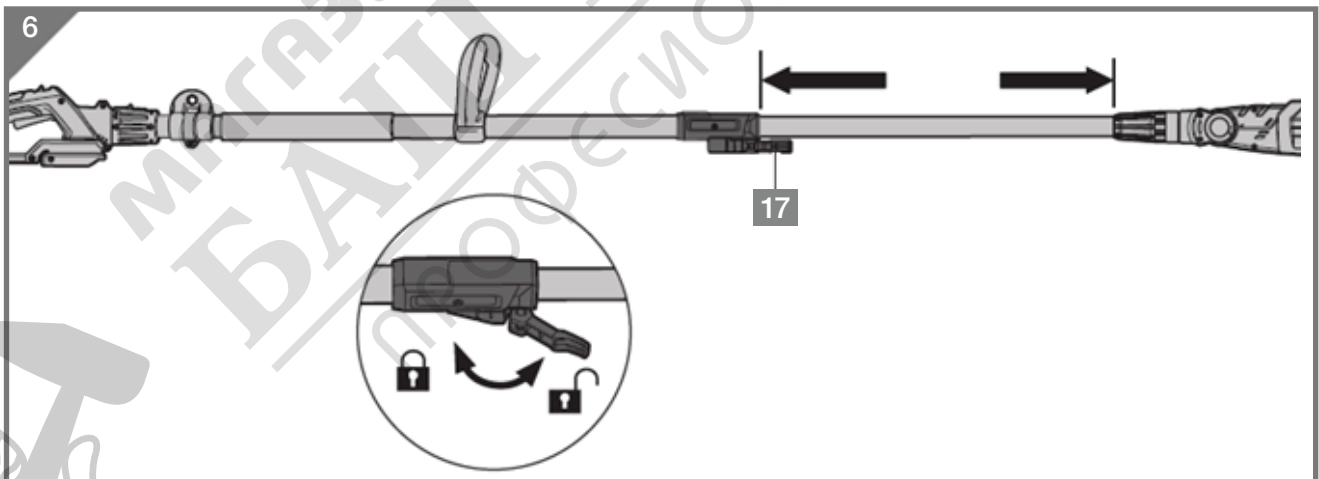


Mount additional handle



1. Use the Allen key 10 to unscrew the fastening screws on the additional handle 6 in an anti-clockwise direction.
 2. Remove the clamping plate.
 3. Place the additional handle with the incline in the direction of the saw chain head 8 on the tube 11.
 4. Put on the clamping plate and screw in the fastening screws clockwise.
 5. Move the handle to the desired position and tighten the fastening screws.
- The additional handle is installed.

Adjust telescopic tube



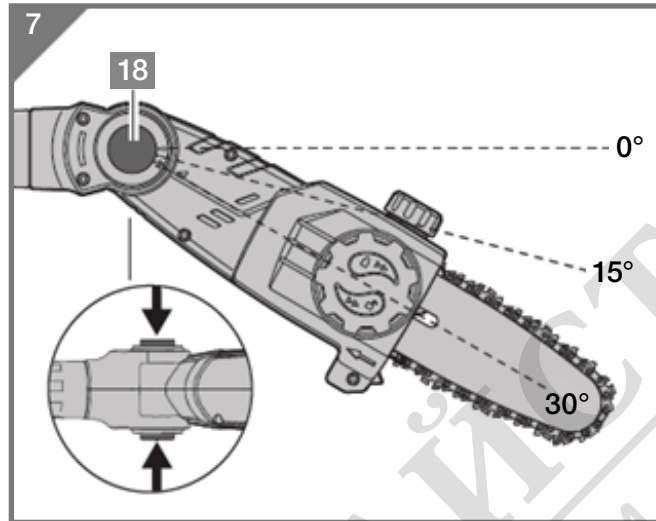
1. Open the lock of the telescopic tube 17 as shown.
2. Pull out the telescopic tube 9 as far as is necessary for your work or as far as the stop of 78 cm.
3. Close the latch.

If necessary, tighten the screw on the clamping device with the Allen key 10 clockwise in order to achieve a sufficiently tight clamping.

Adjust the angle of inclination

In order to enable an optimal working position, the saw chain head 8 can be inclined by 15° and 30°.

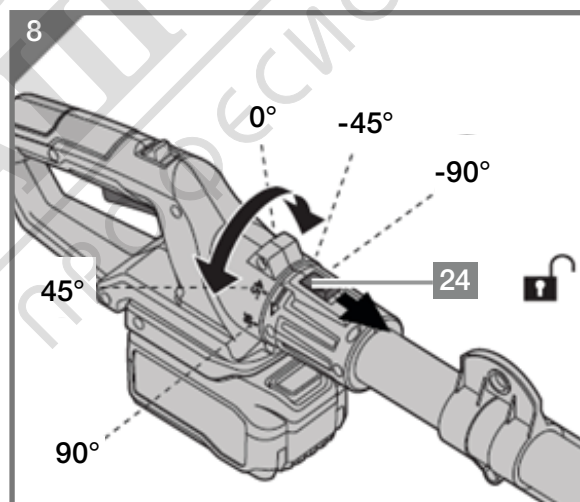
1. Press and hold the locking device of the inclination angle 18.
2. Set the desired angle of inclination.
3. Release the lock. Make sure that the saw chain head clicks into place. The angle of inclination is set.



Adjust the handle

To enable an optimal working position, the handle 1 can be rotated 90° to the right and left.

1. Press and hold the locking button of the handle 24.
 2. Set the desired angle.
 3. Release the locking button on the handle.
- Make sure that the handle clicks into place.



Insert/replace battery

The battery for the device is a system battery and must be purchased separately.

Read the operating instructions for the battery before inserting it.

CAUTION: Risk of fire and explosion due to polarity reversal or short circuit

- Only use batteries that are suitable and approved by the manufacturer (see Technical data).
- Only use undamaged batteries.

Remove the battery

1. Press and hold the battery release button.
2. Pull the battery out of the battery holder.

If the battery cannot be removed easily, the battery release button was not pressed enough. Press the battery release button more firmly.

Insert the battery

1. To insert the battery, slide the battery into the battery holder. You will hear a "click" when the battery lock engages.
2. Check that the battery is firmly seated.

CAUTION: Long periods of time in the immediate vicinity of the running device can lead to hearing damage.

- Wear hearing protection.
- A certain amount of noise from this device cannot be avoided. Postpone noisy work to approved and specified times. If necessary, keep to rest periods and limit the working time to the bare minimum. For your personal protection and the protection of people in the vicinity, suitable hearing protection must be worn.

WARNING: This power tool generates an electromagnetic field during operation.

This field can, under certain circumstances, affect active or passive medical implants.

- To reduce the risk of serious injury or death we recommend people with medical implants to consult their doctor and the manufacturer of the medical implant before operating the machine.

WARNING: Risk of injury from running saw chain.

- Keep your hands away.
- Never use the machine with a damaged cover or protective device or without a cover or protective device.
- Remove the replaceable battery before all adjustment, cleaning and maintenance work on the device.
- Wait until all rotating parts have come to a standstill and the device has cooled down. Before using the device, inspect the work area.

Remove hard objects such as stones, broken glass, wire, etc. that could be thrown away, ricocheted, or otherwise cause injury or damage while the device is in use.

Never use this device if the correct equipment is not attached.

Service

The device must not be used if it is damaged or the safety devices are defective. Replace worn and damaged parts.

Before each start-up, check all screw and plug connections as well as protective devices for tightness and correct fit and whether all moving parts move easily.

It is strictly forbidden to dismantle or modify the protective devices on the machine or to alienate them from the intended purpose or to attach third-party protective devices.

If the device begins to vibrate abnormally, switch off the engine and investigate the cause immediately. Vibrations are generally a warning of a malfunction.

If the device is blocked, switch it off immediately and then remove the object.

Store the device dry and protected from frost.

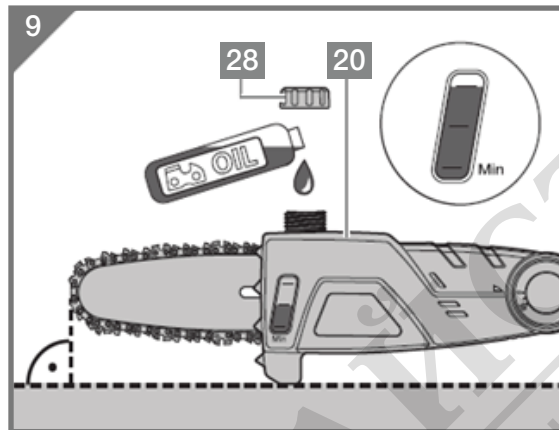
Keep unused power tools out of the reach of children. Do not allow people to use the power tool who are not familiar with it or who have not read these instructions.

Add chain oil. Risk of damage!

Running the machine without lubrication can damage the bar and saw chain.

- Never work without chain lubrication.

- It is therefore essential to check the oil level on the level indicator regularly and every time you start working with the device.
 - Make sure that the container is always $\frac{1}{4}$ full so that there is enough oil for the respective project.
1. Place the device on a level surface.
 2. Unscrew the cap of the chain oil tank 28 in an anti-clockwise direction.
 3. Fill the chain oil into the chain oil tank 20 until the level indicator shows the level shown. Make sure that no dirt gets into the oil tank. .
- Close the oil tank by turning the lid clockwise screw tight. The chain oil is filled.



Use a shoulder strap

When using the device, always wear the carrying strap 12 so that you can work as fatigue-free as possible.

In order to be able to open the shoulder strap quickly in the event of an accident, it is equipped with an accelerator.

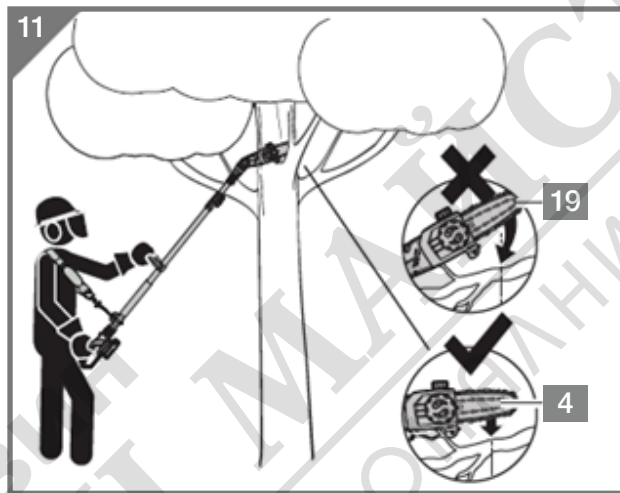
1. Put the strap on so that it runs over your shoulder and crosses your chest and back.
2. Fasten the shoulder strap with the hook of the accelerator of the carrying strap 26 on the fastening eyelet for the carrying strap 3.
3. Adjust the strap length of the shoulder strap so that the attachment eye of the shoulder strap is at hip height.
4. To change the belt position on the device, slightly unscrew the fastening screws of the fastening eyelet of the carrying belt in an anti-clockwise direction.
 - Move the fastening eyelet of the shoulder strap to the desired position.
 - Tighten the fastening screws of the fastening eyelet in a clockwise direction.

Check the accelerator of the shoulder strap before and after each use for damage and correct function. In the event of functional difficulties or damage, have it checked immediately by authorized specialists and, if necessary, replaced.



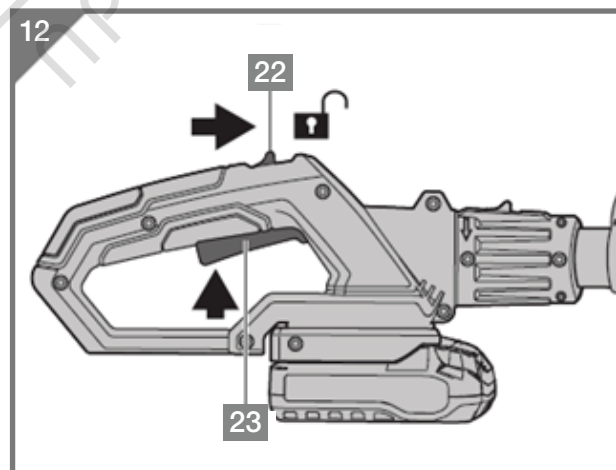
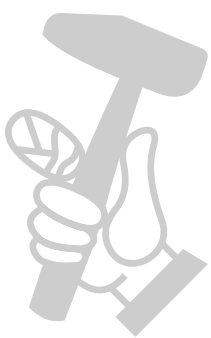
Work instructions

- Hold the device with both hands, with your thumb and fingers firmly gripping the handles.
- Bring your body and arms in a position where you can withstand the kickback forces.
- When working on a slope, always stand above or to the side of the branch you are sawing.
- First saw off the lower branches of the tree so that they can fall down unhindered.
- Do not saw the bulging branches to make it easier for the tree to heal.
- Sawing off small branches: Place the stop surface 19 lightly on the branch to avoid jerky movements of the device when starting the cut. Guide the sword 4 through the branch from top to bottom, applying slight pressure.
- Sawing off large branches: First saw about 1/3 with the top of the sword. of the branch diameter from bottom to top. Then saw with the underside of the sword from top to bottom towards the first cut.
- Change your work position regularly.
- When changing the working position, watch out for branches that are lying on the ground and kicking back.



To switch on and off

1. Remove the protective cover 2.
2. Push the release button 22 completely forward and press the on/off switch 23. The release button is only used to unlock the on / off switch and can be released after switching on. The device is switched on.
3. Release the on/off switch. The device is switched off.



Remove blockages

WARNING: Risk of injury! Unintentional switching on can lead to injuries.

- Make sure that the device is switched off.
 - Disconnect the battery from the device. Remove blockages
1. Make sure the device is turned off.
 2. Remove any jammed material from the saw chain 5 and blade 4. Wear suitable gloves to avoid injury.

Test

WARNING: Risk of injury from sharp knives

- Use protective gloves. Before each use, check:
 - The device for damage.
 - The controls for damage.
 - The accessories are in perfect condition.
 - That the ventilation slots are free and clean.

Do not use a damaged device or accessory. Have it checked and repaired by the manufacturer or its customer service or a similarly qualified person.

Maintenance

- Remove the replaceable battery before all adjustment, cleaning and maintenance work on the device.
- Wait until all rotating parts have come to a standstill and the device has cooled down. Always keep the device, especially the ventilation slots, clean. Never spray the device body with water! Do not clean the machine and its components with solvents, flammable or toxic liquids.

Use only a damp cloth for cleaning. Use only original accessories and original spare parts. The use of other spare parts can cause accidents for the user. The manufacturer is not liable for any resulting damage.

If you need accessories or spare parts, please contact our service. Only a device that is regularly serviced and well cared for can be a satisfactory aid. Inadequate maintenance and care can lead to unpredictable accidents and injuries.

Repairs and work that are not described in these instructions may only be carried out by qualified specialists. Sharpening the chain is a demanding task. Therefore, the manufacturer recommends that a worn or dull chain be replaced with a new chain, available from your service center. The part number is listed in the product specification table in this manual. Follow the instructions for chain lubrication and chain tension and adjustment.

Clean the device with a soft, dry cloth after each use. Remove all chips, dirt and debris in the battery holder. Check bolts, nuts and screws again and again whether everything is tight so that the device is in a safe condition. Any damaged part must be properly repaired or replaced by the authorized customer service.

Transport and storage

- Stop the device, remove the battery and let it cool down before storing or transporting it.
- Carry the device with 2 hands using the Additional handle 6 when switched off and the battery removed, the saw chain 5 facing away from your body.
- When transporting or storing the device, always put the protective cover 2 on the blade 4.
- Always apply a little oil to the chain before storage to prevent rust.
- Remove the battery for storage and store it according to the information in the associated manual.
- Protect the device from impacts or strong vibrations.
- Secure the device when transporting it in a vehicle. We recommend dismantling the saw chain head 8 and transporting it upright in a cardboard box (the chain oil tank lock 28 points upwards).
- If possible, use the original packaging for transport.
- Clean the device before storing it.

- Store the device and its accessories in a dark, dry and frost-free place that is inaccessible to children. The optimal storage temperature is between 5°C and 30°C.
- Keep the device away from corrosive substances such as garden chemicals and de-icing salts.
- Dismantle the device in the reverse order to that shown in the Installation chapter.
- It is recommended to remove as much of the remaining chain oil as possible from the tank before storing it for a long time (pour into the original bottle with the aid of a funnel) Close the storage container tightly and store it in a cool, well-ventilated place.

4. TECHNICAL SPECIFICATIONS

Power: 18V

Cutting speed: 5,5 m/s

Oil tank capacity: 0.07 L

Total length: 1900-2680 mm

Bar length: 240 mm

Useful cutting length: 180 mm

Chain step: 9,53 mm (3/8")

Guide tooth thickness of the chain: 1,3 mm (0,050")

Cutting head inclination: 0°-15°-30°

Sound pressure level at the operating site LpA: 76,2 dB(A) K=3

Sound power level measured LwA: 84,5 dB (A) K=3

Guaranteed sound power level LwA: 88 dB(A)

Vibration: 0,575 m/s² 1,5

Weight: 3,7 kg

Accessories: straps and auxiliary handle.

Battery and charged not included.

The vibration and noise emissions during the actual use of the power tool can deviate from the specified values, depending on the way in which the power tool is used, in particular the type of workpiece being machined.

It is necessary to establish safety measures to protect the operator based on an estimate of the vibration exposure during actual use conditions (all parts of the operating cycle must be taken into account, for example times when the power tool is switched off and those when it is switched on is, but runs without load).

Try to keep the exposure to vibrations and noise as low as possible. Examples of measures to reduce vibration exposure are wearing gloves when using the tool, limiting working hours and using accessories that are in good condition.



Old devices must not be disposed of with household waste!

If the device can no longer be used, every consumer is legally obliged to separate old devices from household waste, e.g. B. at a collection point in his community / district. This ensures that old devices professionally recycled and negative effects on the environment avoided. That is why electrical devices are marked with the above symbol.



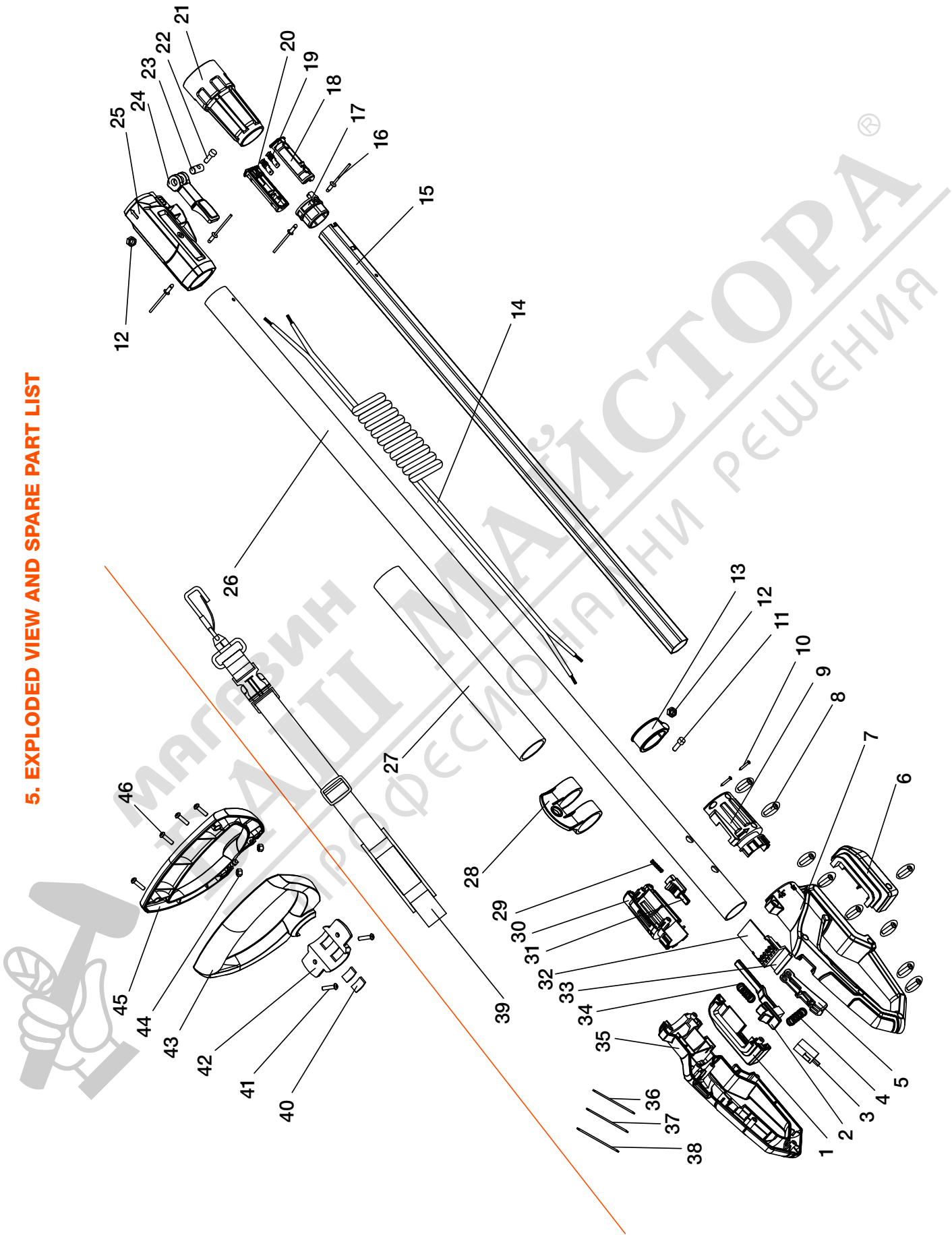
Batteries and rechargeable batteries are not household waste!

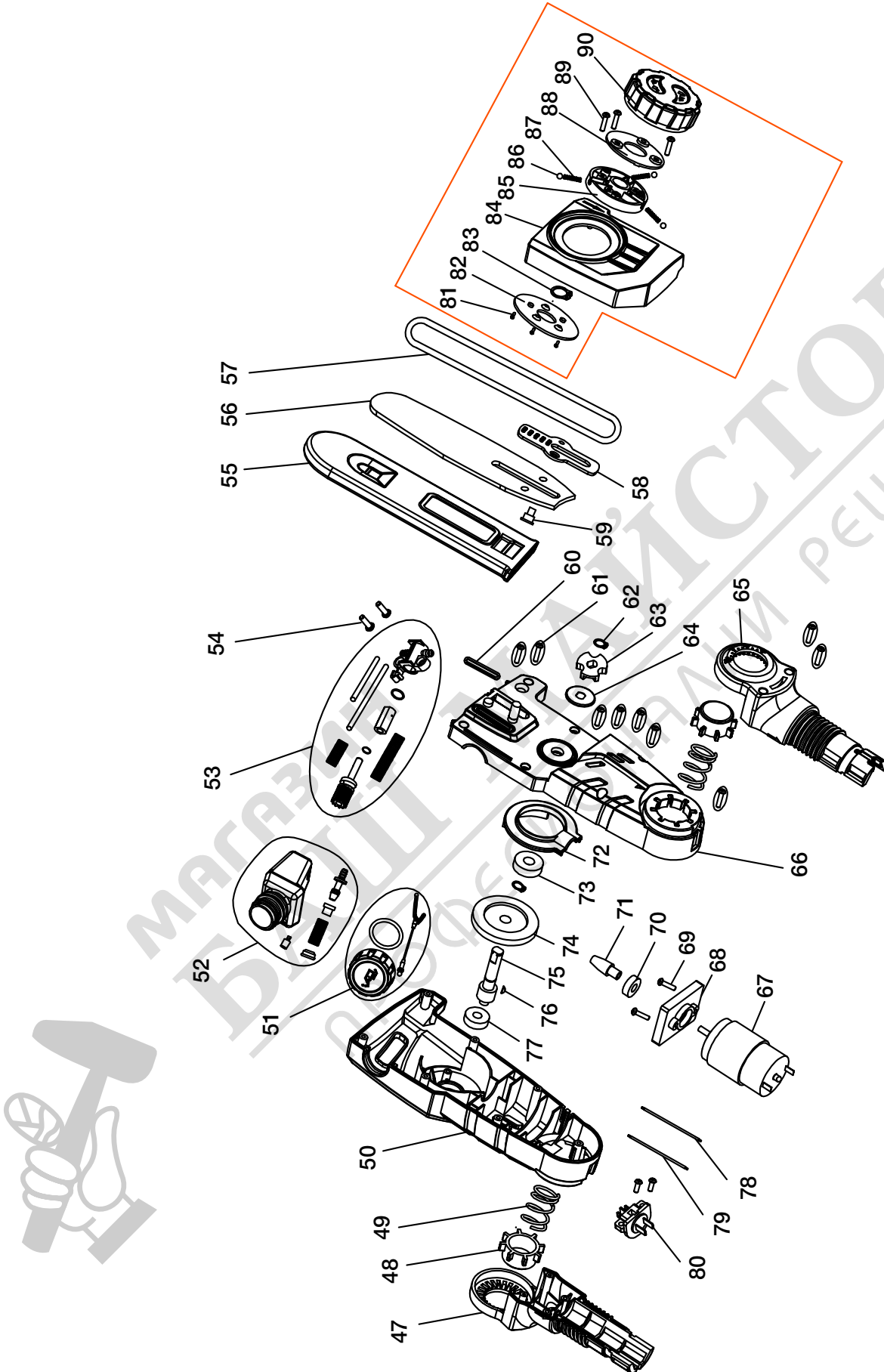
As a consumer, you are legally obliged to dispose of all batteries and accumulators, regardless of whether they contain harmful substances * or not, at a collection point in your community / district or in the trade so that they can be disposed of in an environmentally friendly manner can be.

Batteries and rechargeable batteries must be disposed of separately from the device.

*Marked with: Cd = cadmium, Hg = mercury, Pb = lead, Li = lithium.

5. EXPLODED VIEW AND SPARE PART LIST





1. Battery bracket (x1)
2. Unlock the push button(x1)
3. Micro Switch(x1)
4. Spring1 (x1)
5. Switch the trigger (x1)
6. Battery bottom bracket (x1)
7. The right handle (x1)
8. Cross tapping screw (x9)
9. Right hand twist (x1)
10. Cross tapping screw (x2)
11. Hexagon socket screw (x1)
12. Locknut (x2)
13. Fixed button (x1)
14. Spring wire (x1)
15. Inner pipe (x1)
16. Rivet (x4)
17. Stop collar (x1)
18. The right insert (x1)
19. Slot (x2)
20. Insert seat left (x1)
21. Lock pipe joints (x1)
22. Hexagon socket screw (x1)
23. The adjust pin (x1)
24. Adjust the trigger (x1)
25. Expansion pipe joint (x1)
26. Outer tube (x1)
27. Foam (x1)
28. Hang buckle (x1)
29. Spring 3 (x1)
30. Left rotator (x1)
31. Rotate the push button (x1)
32. PCB board (x1)
33. Insert a (x1)
34. Spring 2 (x1)
35. The left handle (x1)
36. In the terminal 3 (x1)
37. In the terminal 4 (x1)
38. In the terminal 3 (x1)
39. Straps (x1)
40. Rubber blanket (x2)
41. Hexagon socket bolt (three sets) (x2)
42. Sub-handle bottom cover (x1)
43. Second handle top cover (x1)
44. Hex nut(x2)
45. Second handle lower cover (x1)
46. Cross tapping screw (x4)
47. Left swivel (x1)
48. Spin button (x2)
49. spring (x2)
50. The left casing (x1)
51. Oil can cover assembly (x1)
 - 51-1. can top (x1)
 - 51-2. gland (x1)
 - 51-3. Oil can cover chain (x1)
52. Oil can component (x1)
 - 52-1. Oiler (x1)
 - 52-2. Oil can rubber nozzle (x1)
 - 52-3. Oil spout (x1)
 - 52-4. seal ring (x1)
 - 52-5. Spring (x1)
 - 52-6. Mesh plug (x1)
53. Oil pump components (x1)
 - 53-1. The oil pump core body (x1)
 - 53-1-1. The oil pump gear (x1)
 - 53-1-2. Oil pump pin (x1)
 - 53-2. O-ring (x1)
 - 53-3. Oil pump shell (x1)
 - 53-4. Oil pump set (x1)
 - 53-5. Rubber gasket (x1)
 - 53-6. Oil-conveying pipe (x1)
 - 53-7. Oil-conveying pipe (x1)
 - 53-8. Spring (x1)
 - 53-9. Spring (x1)
54. Screw (x4)
55. Chain plate sheath (x1)
56. Scraping belt (x1)
57. Chain (x1)
58. Adjusting plate (x1)
59. Rivet (x1)
60. Rubber ring (x1)
61. Screw (x9)
62. Jump ring (x2)
63. Sprocket (x1)
64. Dust cap (x1)
65. Right swivel (x1)
66. Right-turn lane (x1)
67. Motor (x1)
68. Motor bracket (x1)
69. Screw (x2)
70. Bearing (x1)
71. Pinion (x1)
72. Gear cover (x1)
73. Bearing (x1)
74. Rack wheel (x1)
75. Output shaft (x1)
76. Woodruff key (x1)
77. Bearing (x1)
78. N terminal 1 (x1)
79. N terminal 2 (x1)
80. wire holder (x1)
81. Countersunk screw (x3)
82. Chasing (x1)
83. Jump ring (x1)
84. Chain plate gland (x1)
85. Rotary knob 1 (x1)
86. Steel ball (x3)
87. Spring (x3)
88. Knob cover plate (x1)
89. Screw (x3)
90. Rotary knob (x1)

WARRANTY CARD

Product model	Date of sale
Serial number	Company
Username	Client's signature

The product is in good conditions and fully complete. Read and agree the terms of the warranty.

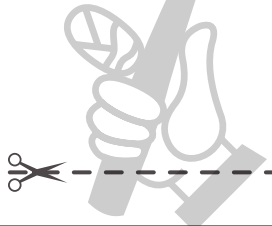
GUARANTEE

The warranty period starts from the date of sale of the products and covers 2 years for all power products.

During the warranty period, free failures caused due to the use of poor-quality materials in the production and manufacturer workmanship admitted fault are removed. The guarantee comes into force only when warranty card and cutting coupons are properly filled. The product is accepted for repair in its pure form and full completeness.

WARRANTY DOES NOT COVER

- Mechanical damage (cracks, chips, etc.) and damage caused by exposure to aggressive media, foreign objects inside the unit and air vents, as well as for damage occurred as a result of improper storage (corrosion of metal parts);
- Failures caused by overloading or product misuse, use of the product for other purposes. A sure sign of overload products is melting or discoloration of parts due to the high temperature, simultaneous failure of two or more nodes, teaser on the surfaces of the cylinder and the piston or destruction of piston rings. Also, the warranty does not cover failure of the automatic voltage regulator due to incorrect operation;
- Failure caused by clogging of the fuel and cooling systems;
- Wearing parts (carbon brushes, belts, rubber seals, oil seals, shock absorbers, springs, clutches, spark plugs, mufflers, nozzles, pulleys, guide rollers, cables, recoil starter, chucks, collets, removable batteries, filters and safety elements, grease, removable devices, equipment, knives, drills, etc.);
- Electrical cables with mechanical and thermal damage;
- Product opened or repaired by a non-authorized service center.
- Prevention, care products (cleaning, washing, lubrication, etc.), installation and configuration of the product;
- Natural wear products (production share);
- Failures caused by using the product for the needs related to business activities;
- If the warranty card is empty or missing seal (stamp) of the Seller;
- The absence of the holder's signature on the warranty card.



DAEWOO	DAEWOO	DAEWOO
Product _____	Product _____	Product _____
Model _____	Model _____	Model _____
Company _____	Company _____	Company _____
Date of sale _____	Date of sale _____	Date of sale _____



DAEWOO
POWER PRODUCTS



МАГАЗИН МАЙСТОРА®
БАШ ПРОФЕСИОНАЛНИ РЕШЕНИЯ

www.daewoopowerproducts.com

Manufactured under license of Daewoo International Corporation, Korea