

ThermoVisualizer Pro



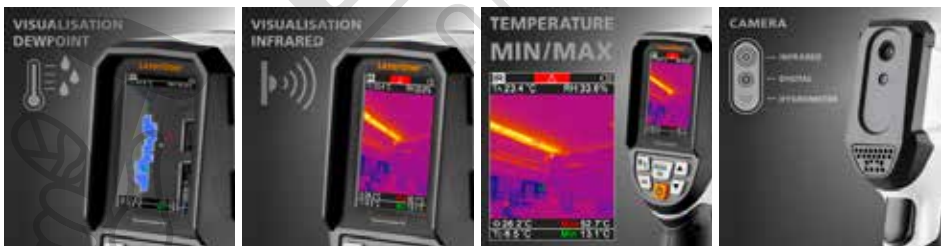
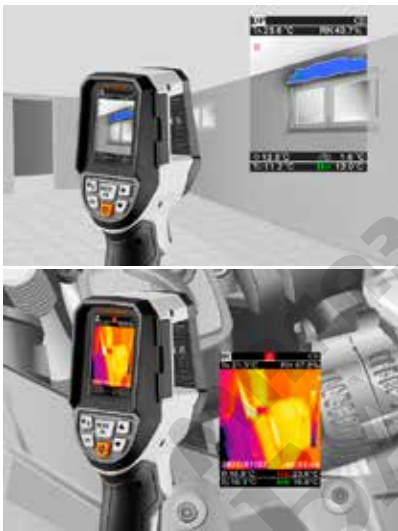
Innovative thermal camera with visual dew point function for the efficient detection of thermal bridges and condensation

This innovative thermal camera determines surface temperatures, relative humidity, ambient temperature and dew point temperature. It reliably visualises temperature curves, thermal bridges and condensation. A fusion from the thermal camera, digital camera and hydrometer forms the visual dew point function. It generates reliable thermal images with precise marking of surfaces that have reached or fallen below the dew point, ideal for critical interior space inspections. In addition to building inspections, the many possible uses include working on electrical systems, machines, heating and ventilation systems as well as locating heat sources or cold spots.

- Reliable visualisation of temperature curves, energy loss, thermal bridges and electrical and mechanical overloads
- Determining surface temperatures, relative humidity, ambient temperature and dew point temperature
- Flexible display with infrared image, digital image and mix image
- Visual dew point function for precise marking of surfaces that have reached or fallen below the dew point

TECHNICAL DATA

Measured Variable	Infrared temperature relative humidity Ambient temperature Dew point temperature
Features	Thermal bridge warning Image recording Real-time clock MIN/MAX Dew point USB mass storage
Screen Type	2,4" Colour TFT
Sensor Type	uncooled microbolometer
Display Resolution	320 x 240 pixels
Image Frequency	9 Hz
Thermal Sensitivity (NETD)	60 mK @25°C
Measuring Range Infrared Temperature	-20°C ... 150°C, 0°C ... 400°C
Accuracy Infrared Temperature	± 2 °C (0°C ... 40°C) ± 4 °C or 3 % (<=0 °C, >40 °C)
Power Supply	Li-ion battery pack 3,6V / 2,55Ah
Operating Time	approx. 4 hours



SCOPE OF DELIVERY



Item No. 082.078A GTIN (EAN) 4021563735426 SU 1