

ROTHENBERGER

ROTORQUE

ROTORQUE



DE Bedienungsanleitung
EN Instructions for use
FR Instruction d'utilisation
ES Instrucciones de uso
IT Istruzioni d'uso
NL Gebruiksaanwijzing
PT Instruções de serviço
DA Brugsanvisning
SV Bruksanvisning
NO Bruksanvisning
FI Käyttöohje
PL Instrukcja obsługi
CZ Návod k používání

TR Kullanım kılavuzu
HU Kezelési útmutató
SL Navodilo za uporabo
SK Návod na obsluhu
HR Upute za uporabu
BG Инструкция за експлоатация
RO Manualului de utilizare
ET Kasutusjuhend läbi
LT Naudojimo instrukcija
LV Lietošanas pamācība
EL Οδηγίες χρήσεως
RU Инструкция по использованию



rothenberger.com

Operating

1

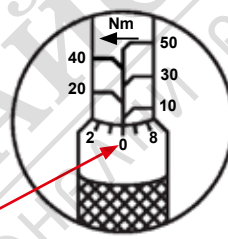
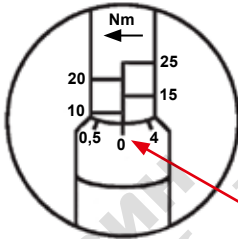
Torque needed to tighten flaring nut according to EN 378-2:2008-06

metric (mm)	Outside diameter (acc. EN 12735-1 and EN 12735-2)		Min. wall thickness (mm)	Tightening torque (Nm)
	size			
	mm	in		
6			0,80	14 - 18
	6,35	1/4	0,80	14 - 18
	7,94	5/16	0,80	33 - 42
8			0,80	33 - 42
	9,52	3/8	0,80	33 - 42
10			0,80	33 - 42
12			0,80	50 - 62
	12,7	1/2	0,80	50 - 62
15			0,80	63 - 77
	15,88	5/8	0,95	63 - 77
18			1,00	90 - 110
		3/4	1,15	90 - 110



no. 100000225
ROTORQUE REFRIGERATION

no. 100000224
ROTORQUE AIRCON

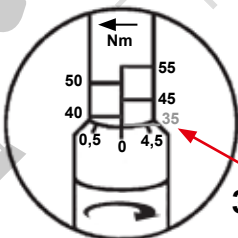


0 Nm



2

100000225

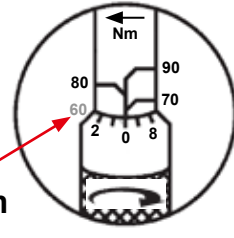


35 Nm



3

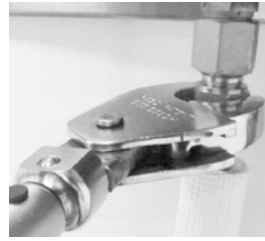
100000224



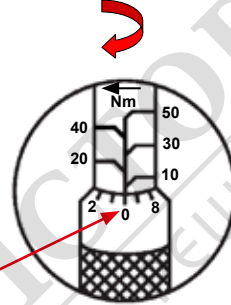
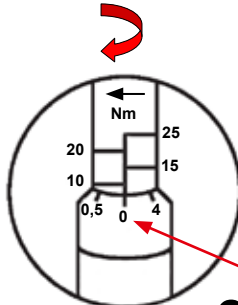
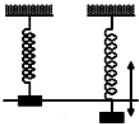
60 Nm



4



5



0 Nm



6

Optional:

ROTORQUE REFRIGERATION

ROTORQUE AIRCON



no. 1000000575

9x12mm - 1/2"



no. 1000000576

9x12mm - 1/4"





ROTHENBERGER Werkzeuge GmbH

Industriestraße 7

D-65779 Kelkheim / Germany

Telefon +49 6195 / 800 - 0

Telefax +49 6195 / 800 - 3500

info@rothenberger.com

МАГАЗИН
БАШ МАЙСТОРА®
ПРОФЕСИОНАЛНИ РЕШЕНИЯ

